



Each office independently owned and operated

RE/MAX METRO REALTY

2312 Eastlake Ave E

Seattle, WA 98102

425 230 7538

METROEASTSIDE.COM

**FOR SALE**

LYNNWOOD OFFICE BUILDING

CALL FOR PRICE

# CEDAR VALLEY OFFICE PARK

20102 CEDAR VALLEY RD, LYNNWOOD, WA 98036



PRESENTED BY:

**JENNY LIU**

Managing Broker

425.230.7538

yanjing.liu@remax.net

WA #22024760

DISCLAIMER

The information contained in the following offering memorandum is proprietary and strictly confidential. It is intended to be reviewed only by the party receiving it from RE/MAX Metro Realty and it should not be made available to any other person or entity without the written consent of RE/MAX Metro Realty.

By taking possession of and reviewing the information contained herein the recipient agrees to hold and treat all such information in the strictest confidence.

The recipient further agrees that recipient will not photocopy or duplicate any part of the offering memorandum. If you have no interest in the subject property, please promptly return this offering memorandum to RE/MAX Metro Realty.

This offering memorandum has been prepared to provide summary, unverified financial and physical information to prospective purchasers, and to establish only a preliminary level of interest in the subject property.

The information contained herein is not a substitute for a thorough due diligence investigation.

RE/MAX Metro Realty has not made any investigation, and makes no warranty or representation with respect to the income or expenses for the subject property, the future projected financial performance of the property, the size and square footage of the property and improvements, the presence of absence of contaminating substances, PCBs or asbestos, the compliance with local, state and federal regulations, the physical condition of the improvements thereon, or financial condition or business prospects of any tenant, or any tenant's plans or intentions to continue its occupancy of the subject property.

The information contained in this offering memorandum has been obtained from sources we believe reliable; however, RE/MAX Metro Realty has not verified, and will not verify, any of the information contained herein, nor has RE/MAX Metro Realty conducted any investigation regarding these matters and makes no warranty or representation whatsoever regarding the accuracy or completeness of the information provided.

All potential buyers must take appropriate measures to verify all of the information set forth herein.

Prospective buyers shall be responsible for their costs and expenses of investigating the subject property.

TABLE OF CONTENTS

EXECUTIVE SUMMARY

LOCATION- CITY OF LYNNWOOD

ADDITIONAL PHOTOS

AERIAL MAP

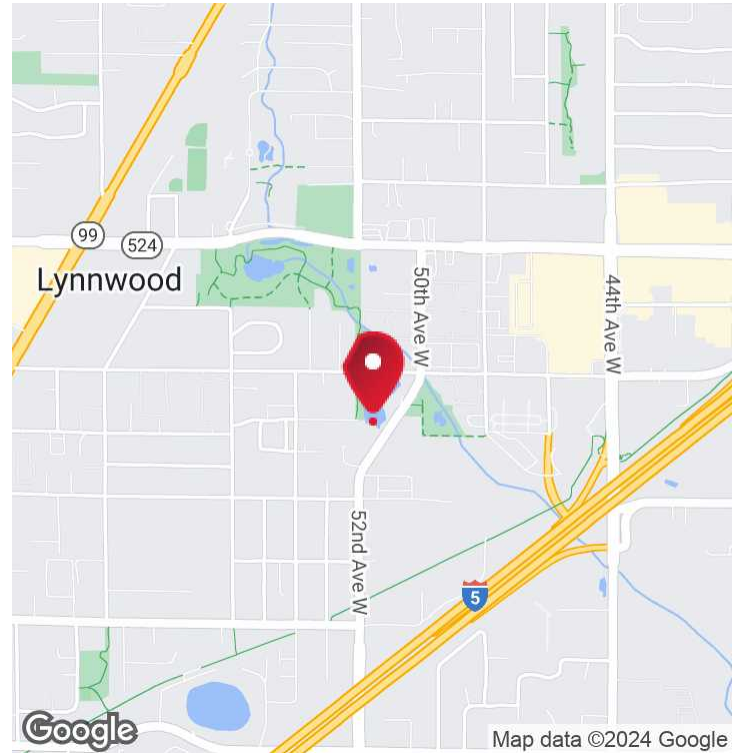
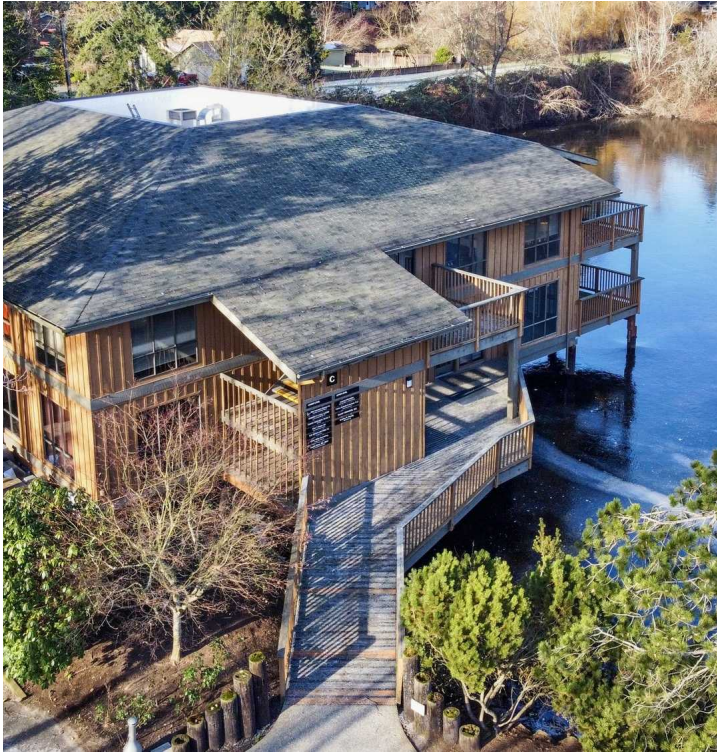
RENT ROLL

FLOOR PLAN 1 & 2

DEMOGRAPHICS



# EXECUTIVE SUMMARY



## OFFERING SUMMARY

Sale Price:	Subject To Offer
Building Size:	9,530 SF
Rent-able SF:	8,481 SF
Occupied SF:	5,402 SF
Vacant SF:	3,079.6 SF
Lot Size:	40,946 SF
Number of Units:	10
Year Built:	1978
Zoning:	NC
Market:	Lynnwood

## PROPERTY OVERVIEW

Rare Lake Front / View Office Building total 9,931SF with 45 Parking Spaces sits on nearly 1 Acre lot. This property is just 3 mins drive / 15 mins Walk to New Lynnwood LightRail Station (2024 Completion).

### Property Highlights

- Lake View Office Building
- Great Location, near light rail station
- Great Owner -Use Opportunities
- 45 Parking Spaces

### BROKER INSTRUCTION:

- PLEASE DO NOT DISTURB TENANTS
- CALL LISTING BROKER 425 230 7538 FOR SHOWINGS

OFFICE BUILDING  
FOR SALE

# LOCATION-CITY OF LYNNWOOD



## THE CITY OF LYNNWOOD

Lynnwood is a city in Snohomish County, Washington, United States. The city is part of the Seattle metropolitan area and is located 16 miles north of Seattle and 13 miles south of Everett, near the junction of Interstate 5 and Interstate 405.

## LYNNWOOD LIGHT RAIL EXTENSION PROJECT

The Lynnwood Link project extends light rail from Northgate into Snohomish County, serving four stations, Shoreline South/148th, Shoreline North/185th, Mountlake Terrace and Lynnwood City Center. Upon opening in 2024\*, riders will enjoy fast, frequent and reliable service between south Snohomish County and the University of Washington, downtown Seattle, the Eastside, Sea-Tac Airport and more.

OFFICE BUILDING  
FOR SALE

RE/MAX METRO REALTY

Each office independently owned and operated

2312 Eastlake Ave E  
Seattle, WA 98102

425 230 7538

METROEASTSIDE.COM



# ADDITIONAL PHOTOS



OFFICE BUILDING  
FOR SALE

**RE/MAX METRO REALTY**  
Each office independently owned and operated

2312 Eastlake Ave E  
Seattle, WA 98102

425 230 7538

METROEASTSIDE.COM



20102 CEDAR VALLEY RD

# // AERIAL MAP



OFFICE BUILDING  
FOR SALE

**RE/MAX METRO REALTY**  
Each office independently owned and operated

2312 Eastlake Ave E  
Seattle, WA 98102

425 230 7538

METROEASTSIDE.COM



## // RENT ROLL

Units #	Rentable SF	Tenant Name	Monthly Rent (\$)	Annual Rent (\$)	\$/SF Annual
100	343.24	A & O Consulting	628.83	7545.96	21.98
102	431.85	Vacant			
103	196.63	D & P	519.14	6229.68	31.68
104	379.78	V & A	662.00	7900.00	20.80
105		Vacant			
106		Vacant			
107		Vacant			
201	778.12	R & M Law Office	1650.00	19,800.00	25.45
202,4&6	2841.45	A & O	5,208.50	62,502.00	22.00
230,5&7	1352.6	T & S	2,390.34	28,684.08	21.21

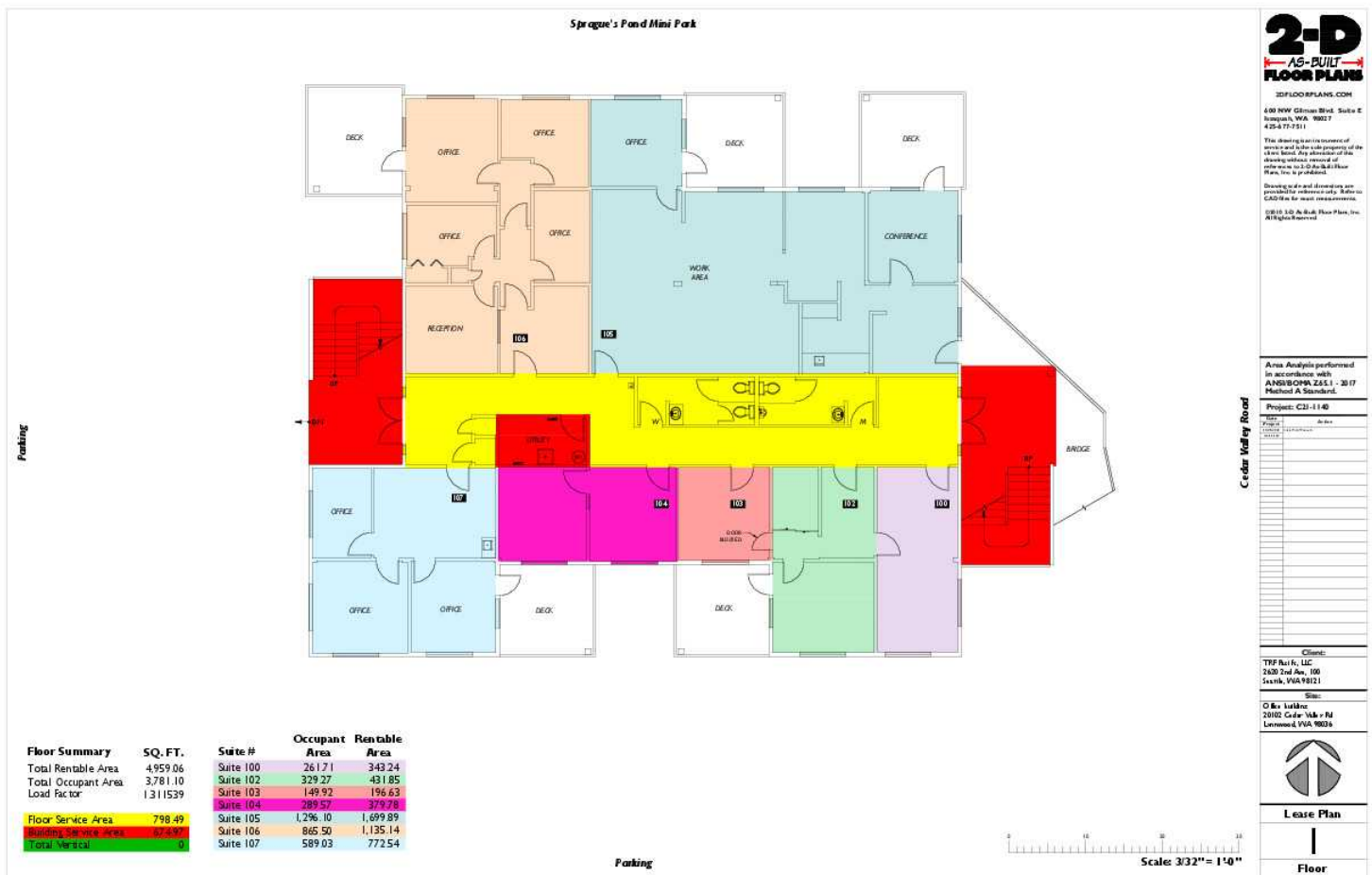
## % OF PROPERTY Sq.Ft

OCCUPIED UNITS	6	60%	5,402.00
VACANT UNITS	4	40%	3,079.60
TOTAL UNITS	10		8,481.60

OFFICE BUILDING  
FOR SALE

P 7

# 1ST FLOOR PLANS



OFFICE BUILDING  
FOR SALE

**RE/MAX METRO REALTY**  
Each office independently owned and operated

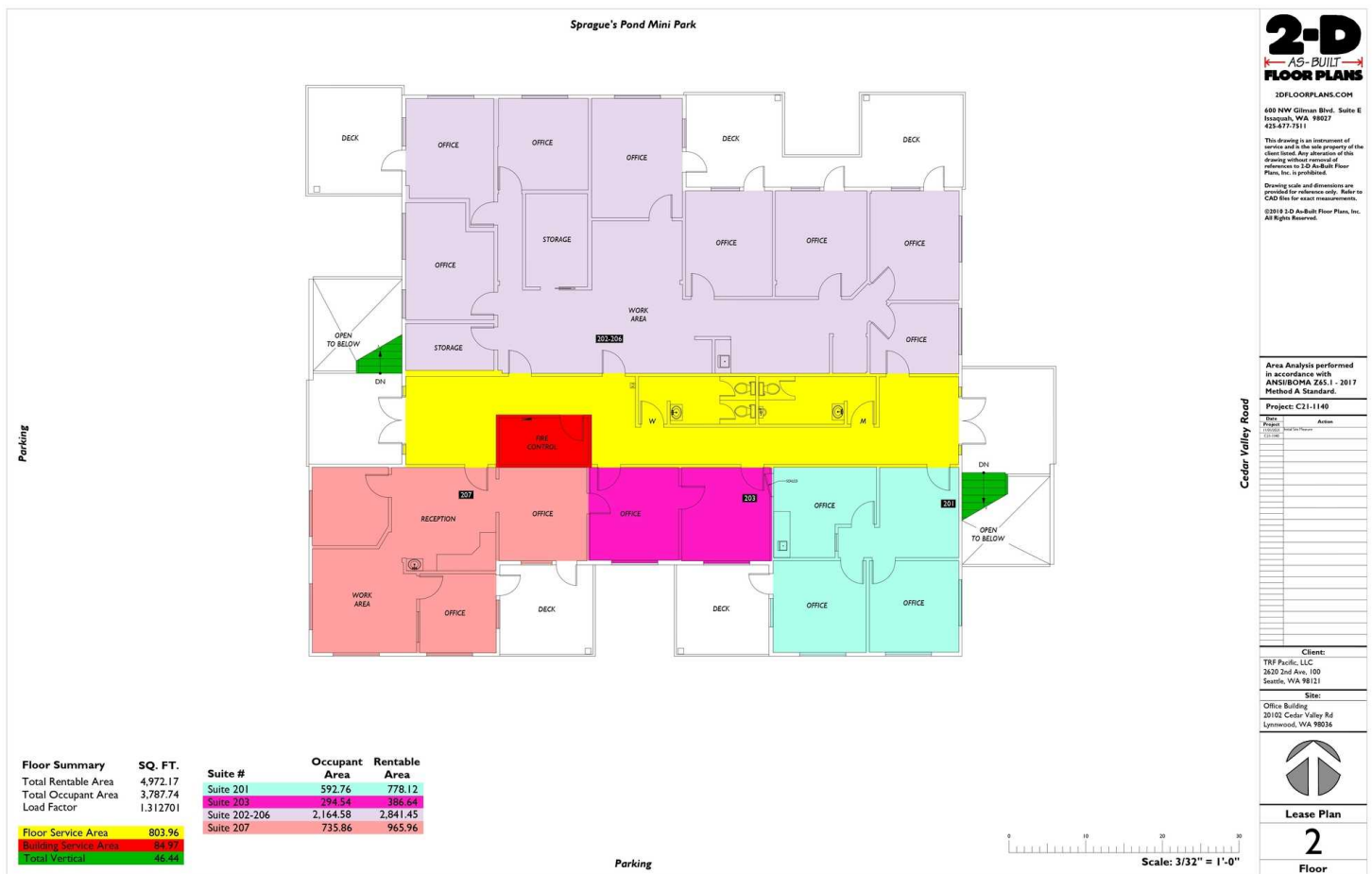
2312 Eastlake Ave E  
Seattle, WA 98102

425 230 7538

METROEASTSIDE.COM



# // 2ND FLOOR PLANS



OFFICE BUILDING  
FOR SALE

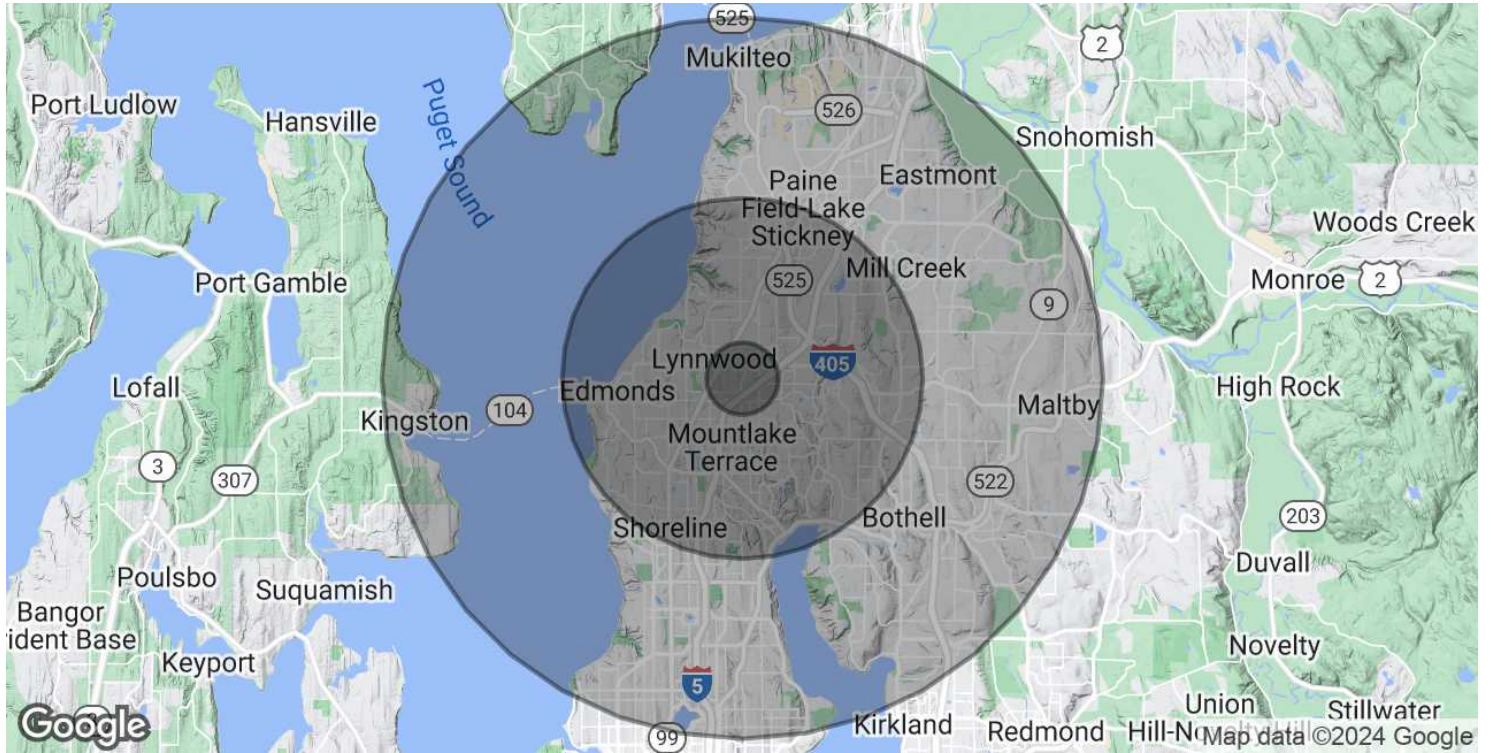
**RE/MAX METRO REALTY**  
Each office independently owned and operated

2312 Eastlake Ave E  
Seattle, WA 98102

425 230 7538

METROEASTSIDE.COM

# DEMOGRAPHICS MAP & REPORT



## POPULATION

### 1 MILE

### 5 MILES

### 10 MILES

Total Population	18,121	311,312	859,505
Average Age	38.0	40.2	39.5
Average Age (Male)	35.1	39.1	38.6
Average Age (Female)	40.1	41.2	40.2

## HOUSEHOLDS & INCOME

### 1 MILE

### 5 MILES

### 10 MILES

Total Households	7,482	123,152	351,366
# of Persons per HH	2.4	2.5	2.4
Average HH Income	\$71,497	\$111,339	\$117,027

\* Demographic data derived from 2020 ACS - US Census

OFFICE BUILDING  
FOR SALE

P 11