

**Back on the Market!**



Industrial Property For Sale

# Greaves Building

**4411 23rd Avenue W  
Seattle, WA 98199**

## Property specifications

- 7,820 SF building available
  - 3,353 SF office (2 floors)
  - 4,467 SF light manufacturing & storage
- 7,000 SF (0.16 AC) total land
- 18' - 20' clear height
- 1 drive-in roll-up door
- 4 auto parking stalls
- Security/fencing in the rear loading area
- Sale Price: \$2,550,000.00

**Scott Carter**  
Managing Director

1 425 761 5880  
scott.carter@jll.com

Although information has been obtained from sources deemed reliable, neither Owner nor JLL makes any guarantees, warranties or representations, express or implied, as to the completeness or accuracy as to the information contained herein. Any projections, opinions, assumptions or estimates used are for example only. There may be differences between projected and actual results, and those differences may be material. The Property may be withdrawn without notice. Neither Owner nor JLL accepts any liability for any loss or damage suffered by any party resulting from reliance on this information. If the recipient of this information has signed a confidentiality agreement regarding this matter, this information is subject to the terms of that agreement. © 2023 Jones Lang LaSalle IP, Inc. All rights reserved.

Jones Lang LaSalle Brokerage, Inc.

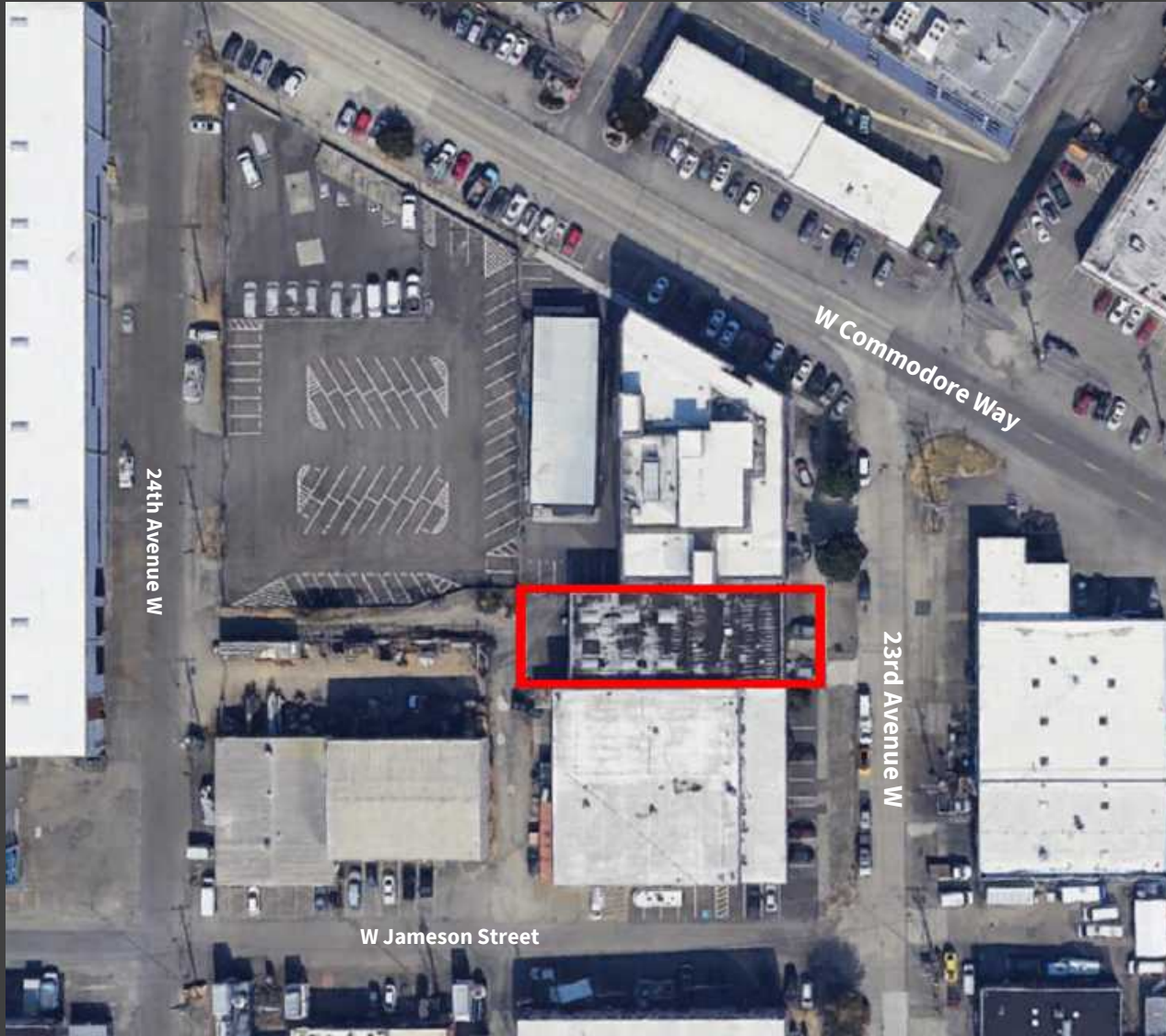
[jll.com](http://jll.com)





# Greaves Building

4411 23rd Avenue W, Seattle, WA 98199



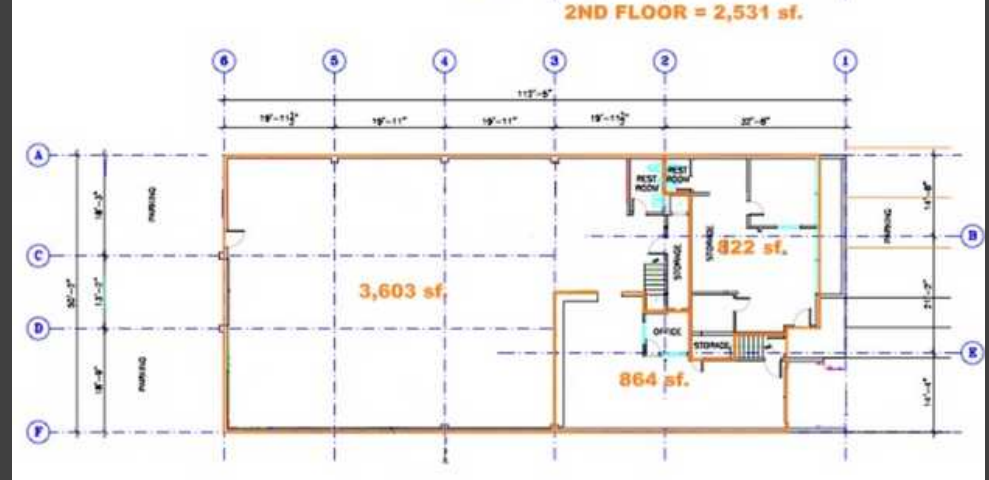
**Scott Carter**  
Managing Director

1 425 761 5880  
scott.carter@jll.com

Although information has been obtained from sources deemed reliable, neither Owner nor JLL makes any guarantees, warranties or representations, express or implied, as to the completeness or accuracy as to the information contained herein. Any projections, opinions, assumptions or estimates used are for example only. There may be differences between projected and actual results, and those differences may be material. The Property may be withdrawn without notice. Neither Owner nor JLL accepts any liability for any loss or damage suffered by any party resulting from reliance on this information. If the recipient of this information has signed a confidentiality agreement regarding this matter, this information is subject to the terms of that agreement. © 2023 Jones Lang LaSalle IP, Inc. All rights reserved.

# Greaves Building

4411 23rd Avenue W, Seattle, WA 98199



JLL

**Scott Carter**  
Managing Director

1 425 761 5880  
scott.carter@jll.com

**7,820 SF**  
3,353 SF office (2 floors) | 4,467 SF Warehouse | 18' - 20' clear height

Although information has been obtained from sources deemed reliable, neither Owner nor JLL makes any guarantees, warranties or representations, express or implied, as to the completeness or accuracy as to the information contained herein. Any projections, opinions, assumptions or estimates used are for example only. There may be differences between projected and actual results, and those differences may be material. The Property may be withdrawn without notice. Neither Owner nor JLL accepts any liability for any loss or damage suffered by any party resulting from reliance on this information. If the recipient of this information has signed a confidentiality agreement regarding this matter, this information is subject to the terms of that agreement. © 2023 Jones Lang LaSalle IP, Inc. All rights reserved.

