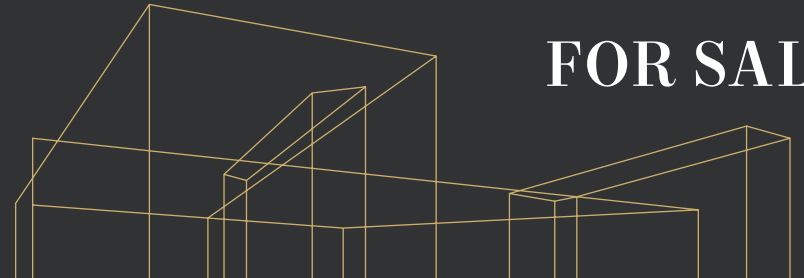




# 13323 Canyon Rd E

PUYALLUP, WA, 98373

## FOR SALE



### 5.53 acres

**ESTIMATED** ±3.5 acres usable

**PRICE** \$2,275,000 (±\$15.00/SF on usable)

**ZONED** ECOR (Unincorporated Pierce County)

[→ ZONING CODE](#) [→ ZONING MAP](#)

**JEROME O'LEARY**

253.779.9292

[jerome.oleary@kidder.com](mailto:jerome.oleary@kidder.com)

**MATT MCLENNAN, SIOR, CCIM**

253.722.1458

[matt.mclennan@kidder.com](mailto:matt.mclennan@kidder.com)

**Kidder  
Mathews**

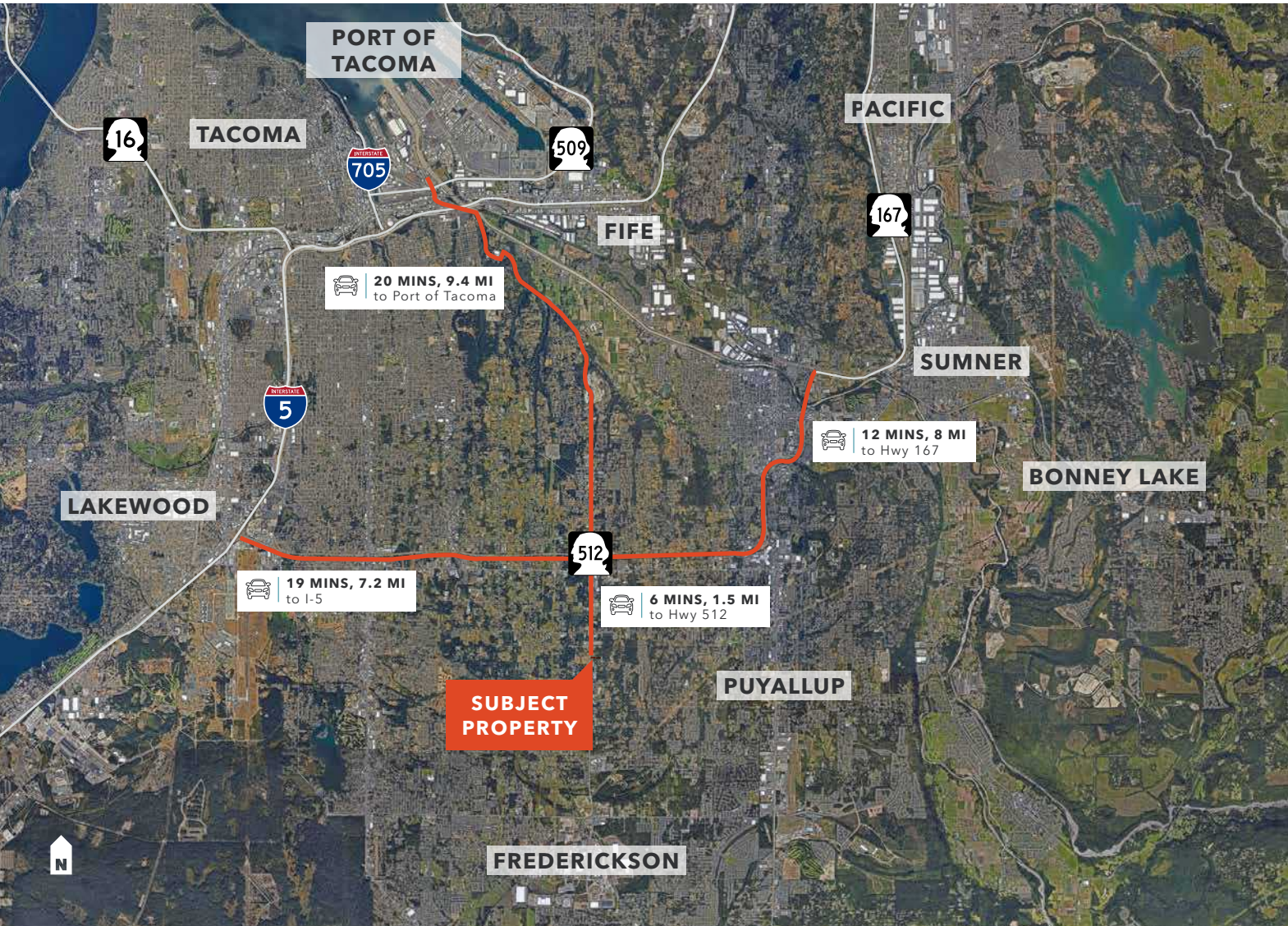
This information supplied herein is from sources we deem reliable. It is provided without any representation, warranty, or guarantee, expressed or implied as to its accuracy. Prospective Buyer or Tenant should conduct an independent investigation and verification of all matters deemed to be material, including, but not limited to, statements of income and expenses. Consult your attorney, accountant, or other professional advisor.

**KIDDER.COM**

FOR SALE

# 13323 Canyon Rd E

PUYALLUP, WA, 98373



**JEROME O'LEARY**  
253.779.9292  
[jerome.oleary@kidder.com](mailto:jerome.oleary@kidder.com)

**MATT MCLENNAN, SIOR, CCIM**  
253.722.1458  
[matt.mclennan@kidder.com](mailto:matt.mclennan@kidder.com)

KIDDER.COM

This information supplied herein is from sources we deem reliable. It is provided without any representation, warranty, or guarantee, expressed or implied as to its accuracy. Prospective Buyer or Tenant should conduct an independent investigation and verification of all matters deemed to be material, including, but not limited to, statements of income and expenses. Consult your attorney, accountant, or other professional advisor.

