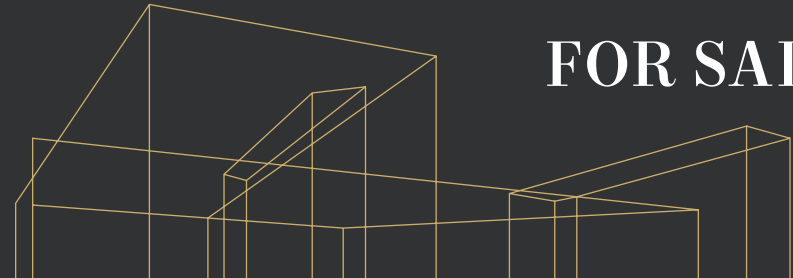




13415 Canyon Rd E

PUYALLUP, WA 98373

FOR SALE



3.4 Acres

ESTIMATED ±2.65 Acres usable

EXISTING garage structure on site

PRICE \$1,700,000 (±\$15/sf on usable)

ZONED ECOR (Unincorporated Pierce County)

→ [ZONING CODE](#) → [ZONING MAP](#)

JEROME O'LEARY

253.779.9292

jerome.oleary@kidder.com

MATT MCLENNAN, SIOR, CCIM

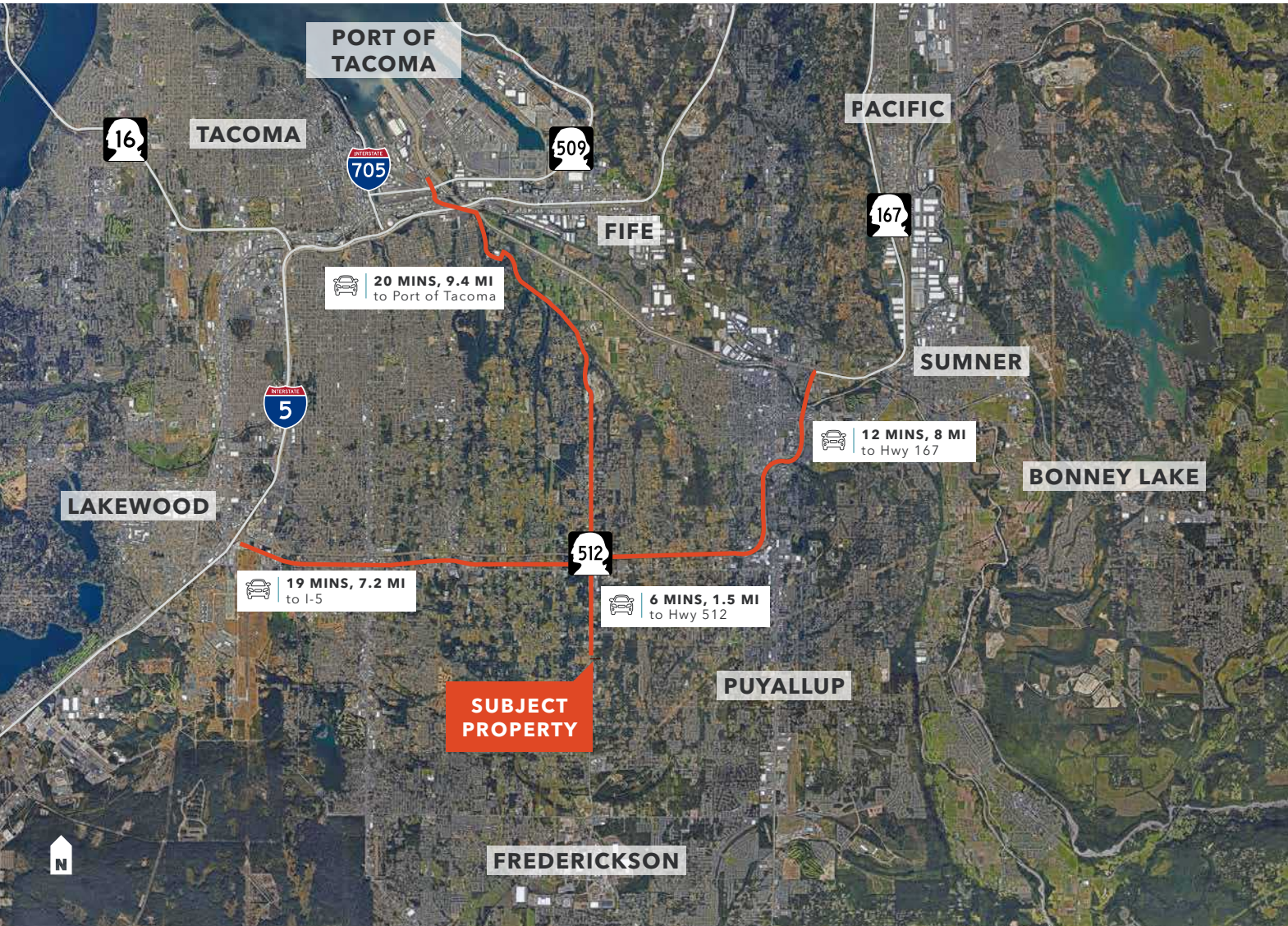
253.722.1458

matt.mclennan@kidder.com

FOR SALE

13415 Canyon Rd E

PUYALLUP, WA, 98373



JEROME O'LEARY
253.779.9292
jerome.oleary@kidder.com

MATT MCLENNAN, SIOR, CCIM
253.722.1458
matt.mclennan@kidder.com

KIDDER.COM

This information supplied herein is from sources we deem reliable. It is provided without any representation, warranty, or guarantee, expressed or implied as to its accuracy. Prospective Buyer or Tenant should conduct an independent investigation and verification of all matters deemed to be material, including, but not limited to, statements of income and expenses. Consult your attorney, accountant, or other professional advisor.

km Kidder Mathews