

► FOR SALE OR LEASE



BELLEWOOD  
OFFICE PROPERTIES

CBRE



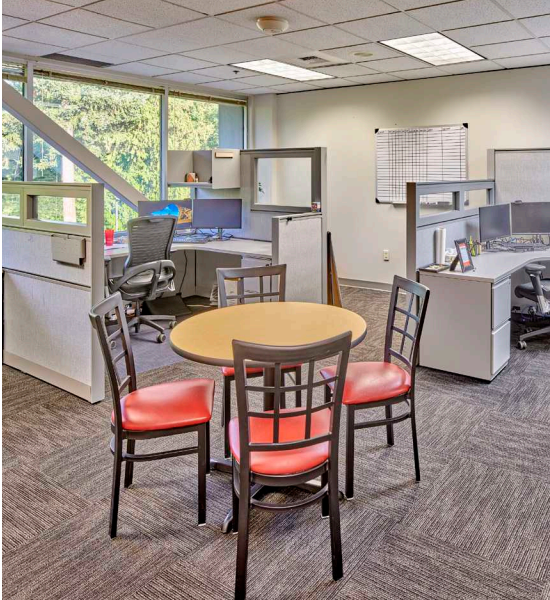
**2229 112th Ave NE**  
BELLEVUE, WA 98004



**2233 112th Ave NE**  
BELLEVUE, WA 98004



**WELL-LOCATED, HIGHLY DESIRABLE SUBMARKET  
WITH EXCELLENT FREEWAY ACCESS, PROXIMATE TO DOWNTOWN  
BELLEVUE AND THE NEW SPRING DISTRICT.**



## PROPERTY HIGHLIGHTS

### 2229 112th Ave NE

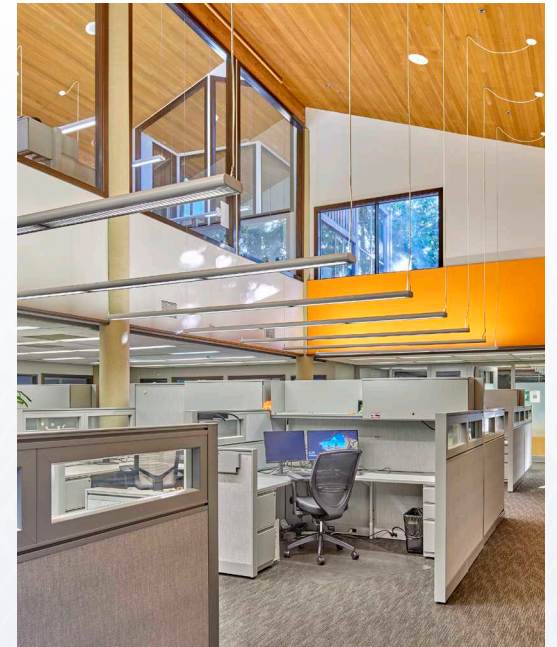
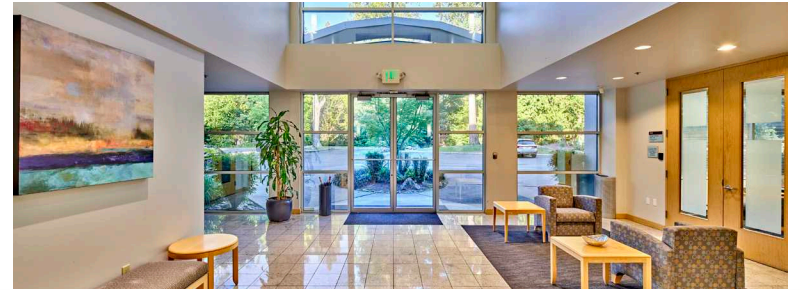
Market/ Submarket	Bellevue
Square Footage	24,985 SF three-story office building
Lot Size	57,364 SF
Year Built	1998
Zoning	Office
Percentage Available	100% available to a user
Lease Rate	\$34.00/SF, NNN
Operating Expenses	\$11.09 RSF
Sale Price	\$ 11,250,000

### 2233 112th Ave NE

Market/ Submarket	Bellevue
Square Footage	27,678 SF three-story office building
Lot Size	82,819 SF
Year Built	1978
Zoning	Office
Percentage Available	100% available to a user
Lease Rate	\$32.00/SF, NNN
Operating Expenses	\$11.09 RSF
Sale Price	\$11,070,000



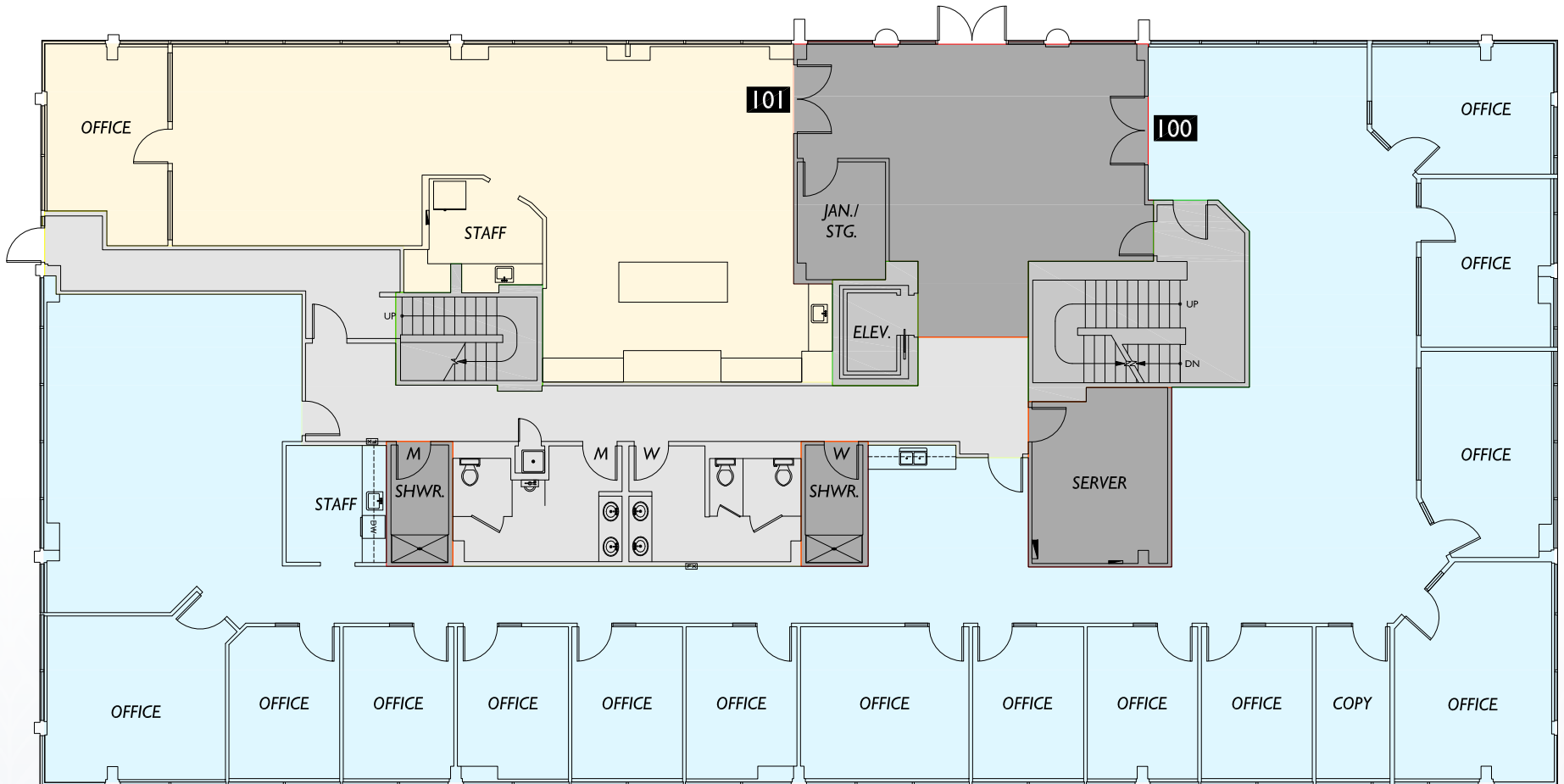
## INTERIOR PHOTOS





2229 112th Ave NE  
BELLEVUE, WA 98004

FLOOR 1

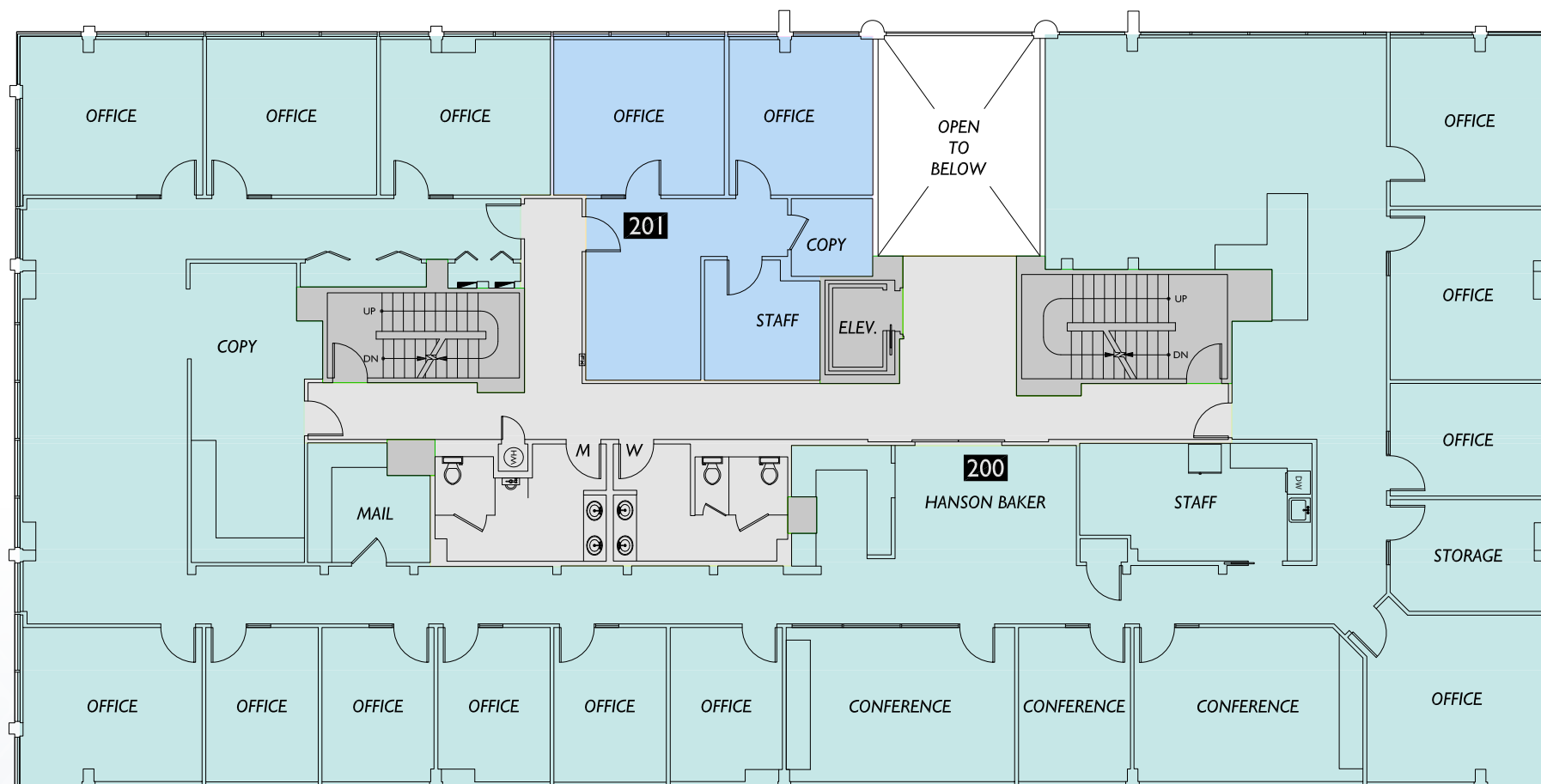


Suite 100: 5,883 RSF

Suite 101: 1,846 RSF



## FLOOR 2

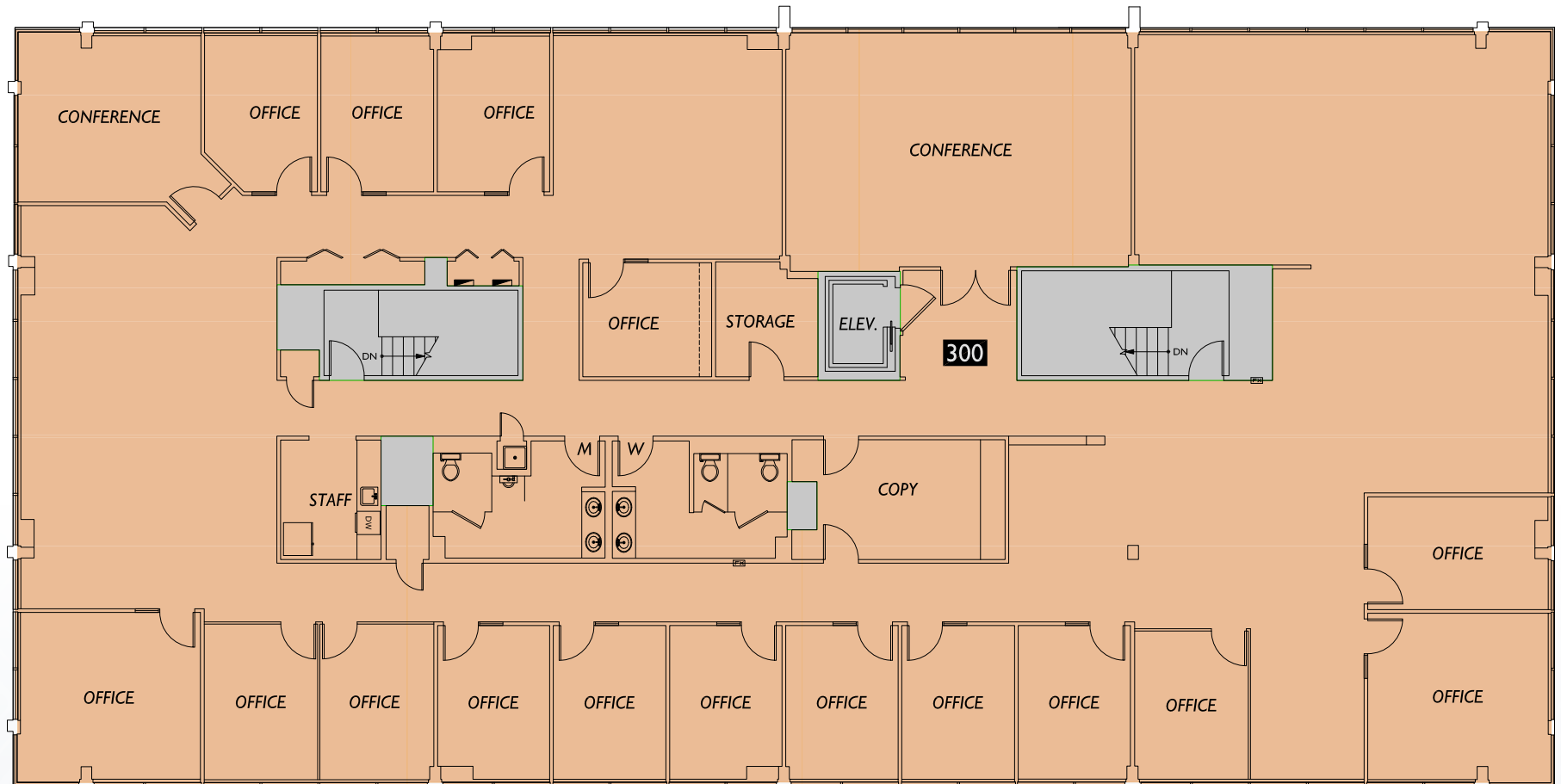


Suite 201: 906 RSF



2229 112th Ave NE  
BELLEVUE, WA 98004

FLOOR 3



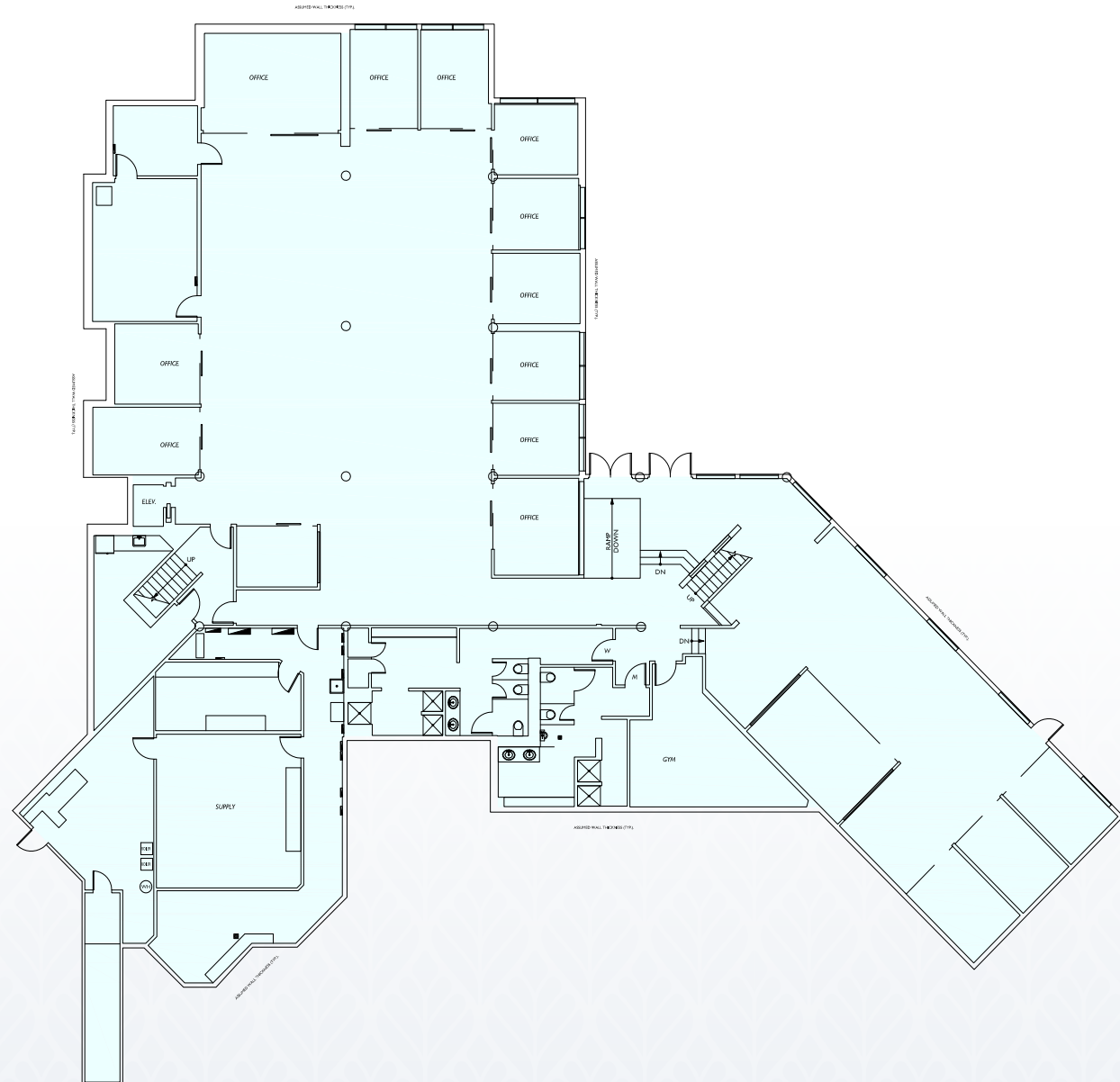
Suite 300: 8,762 RSF



**2233 112th Ave NE**  
BELLEVUE, WA 98004

**LOWER FLOOR**

**NE 24th St**



**112th Ave NE**

**Lower Floor: 10,778 RSF**

## FLOOR 1

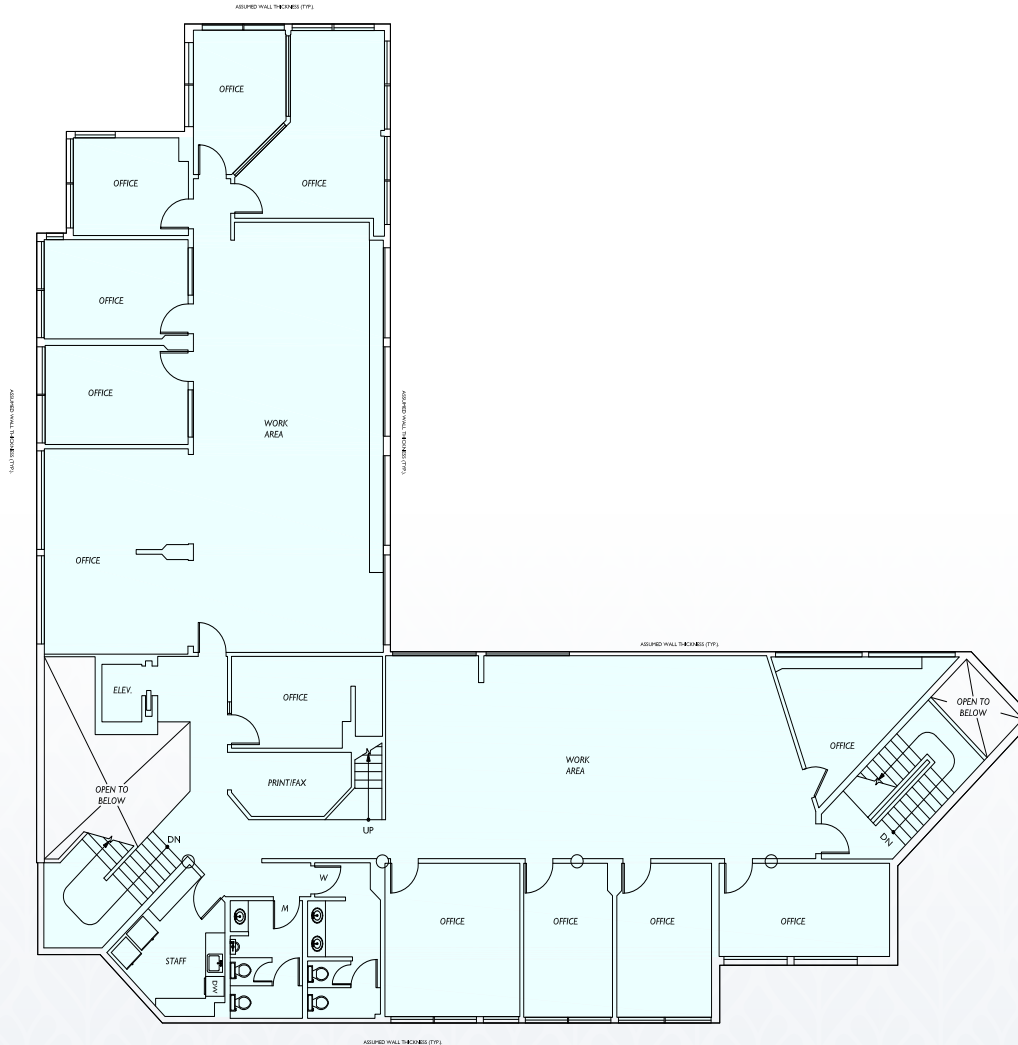




2233 112th Ave NE  
BELLEVUE, WA 98004

## FLOOR 2

NE 24th St

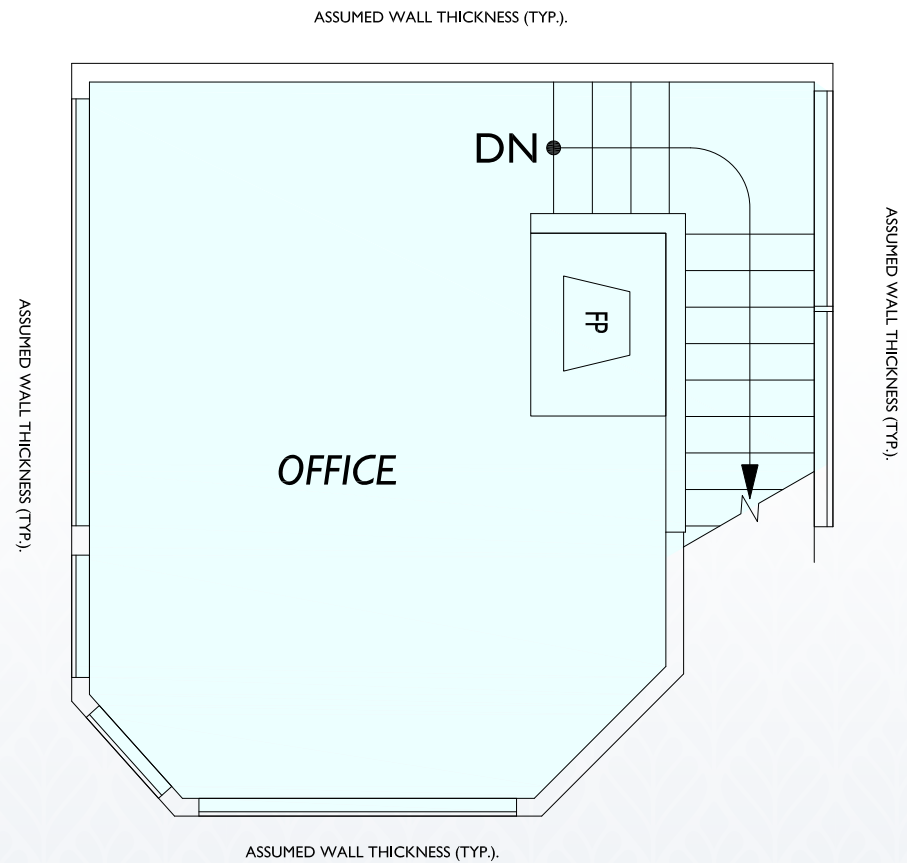


Floor 2: 5,216 RSF

112th Ave NE



NE 24th St



Floor 3: 243 RSF

112th Ave NE



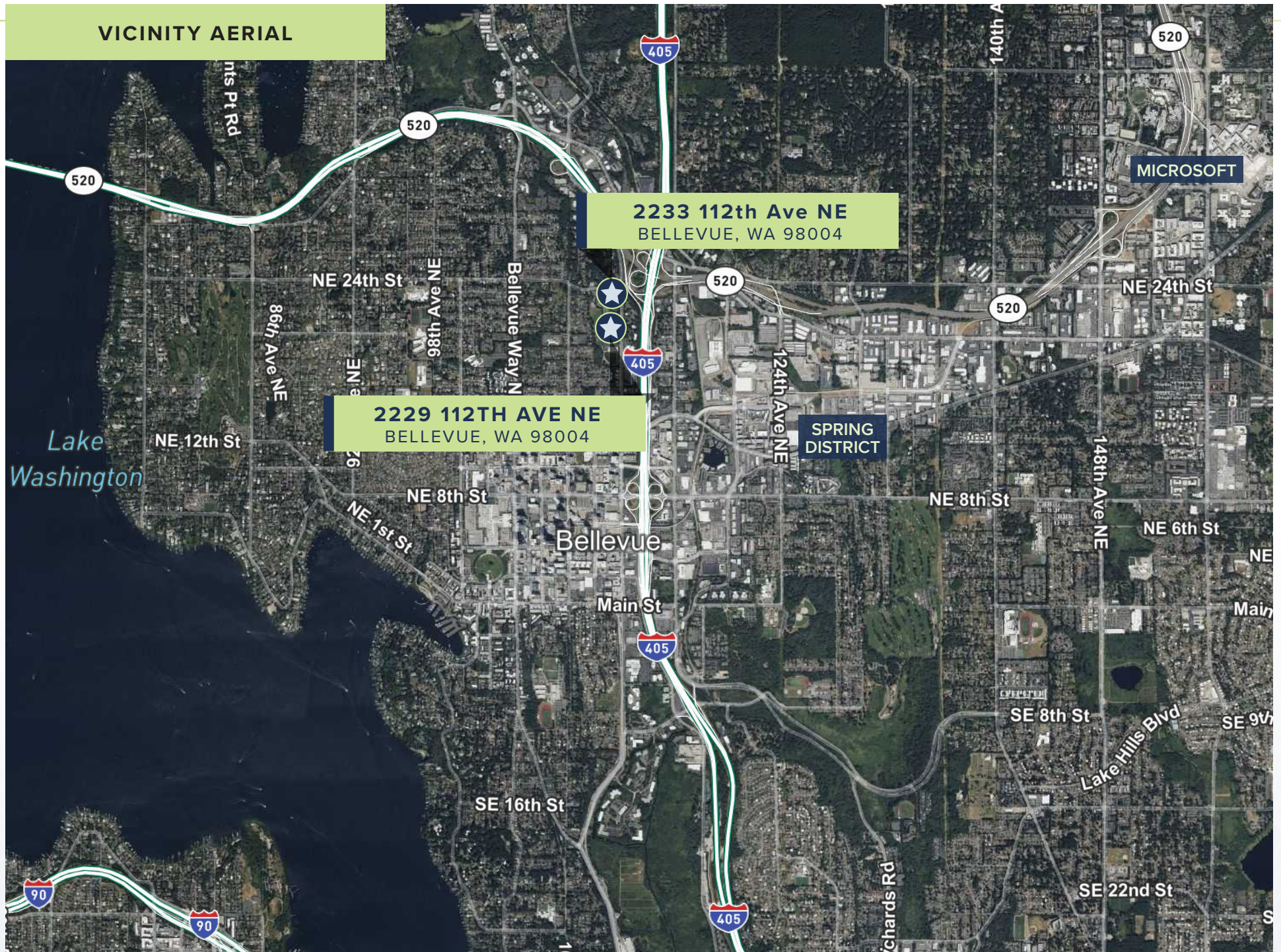


## LOCATION MAP





## VICINITY AERIAL





# ► FOR SALE OR LEASE

## CONTACTS

### Jeff Scanlan

First Vice President

+1 425 462 6923

Broker license #9966

jeff.scanlan@cbre.com

Debt & Structured Finance

### Mark Capeloto

Senior Vice President

+1 206 830 6472

Broker license #8104

mark.capeloto@cbre.com



**BELLEWOOD**  
OFFICE PROPERTIES

**2229 112th Ave NE**  
BELLEVUE, WA 98004

**2233 112th Ave NE**  
BELLEVUE, WA 98004

# CBRE

© 2024 CBRE, Inc. All rights reserved. This information has been obtained from sources believed reliable but has not been verified for accuracy or completeness. You should conduct a careful, independent investigation of the property and verify all information. Any reliance on this information is solely at your own risk. CBRE and the CBRE logo are service marks of CBRE, Inc. All other marks displayed on this document are the property of their respective owners, and the use of such logos does not imply any affiliation with or endorsement of CBRE. Photos herein are the property of their respective owners. Use of these images without the express written consent of the owner is prohibited.  
CMPM Bellewood Office Properties\_BRO\_Scanlan\_v04\_BA 02/07/24