

BP ZONED PROPERTY

FOR SALE



3101 FOBES RD
SNOHOMISH, WA

This document has been prepared by The Remlinger Group for advertising and general information only. The information contained herein has been obtained from reliable sources. However, any prospective buyer or tenant should verify all information relating to this property and contained herein.

www.RemlingerGroup.com

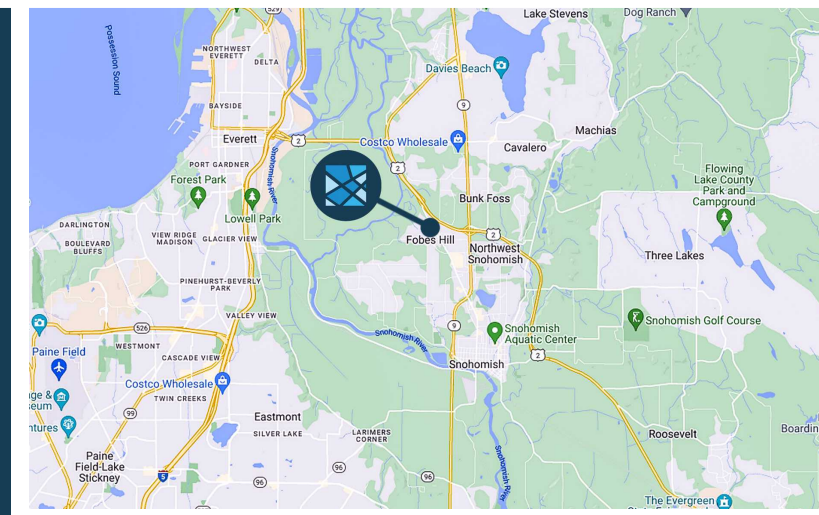
Property Overview



BP ZONING
PERMITTED USE TABLE
CLICK FOR LINK

[View all Permitted Uses](#)

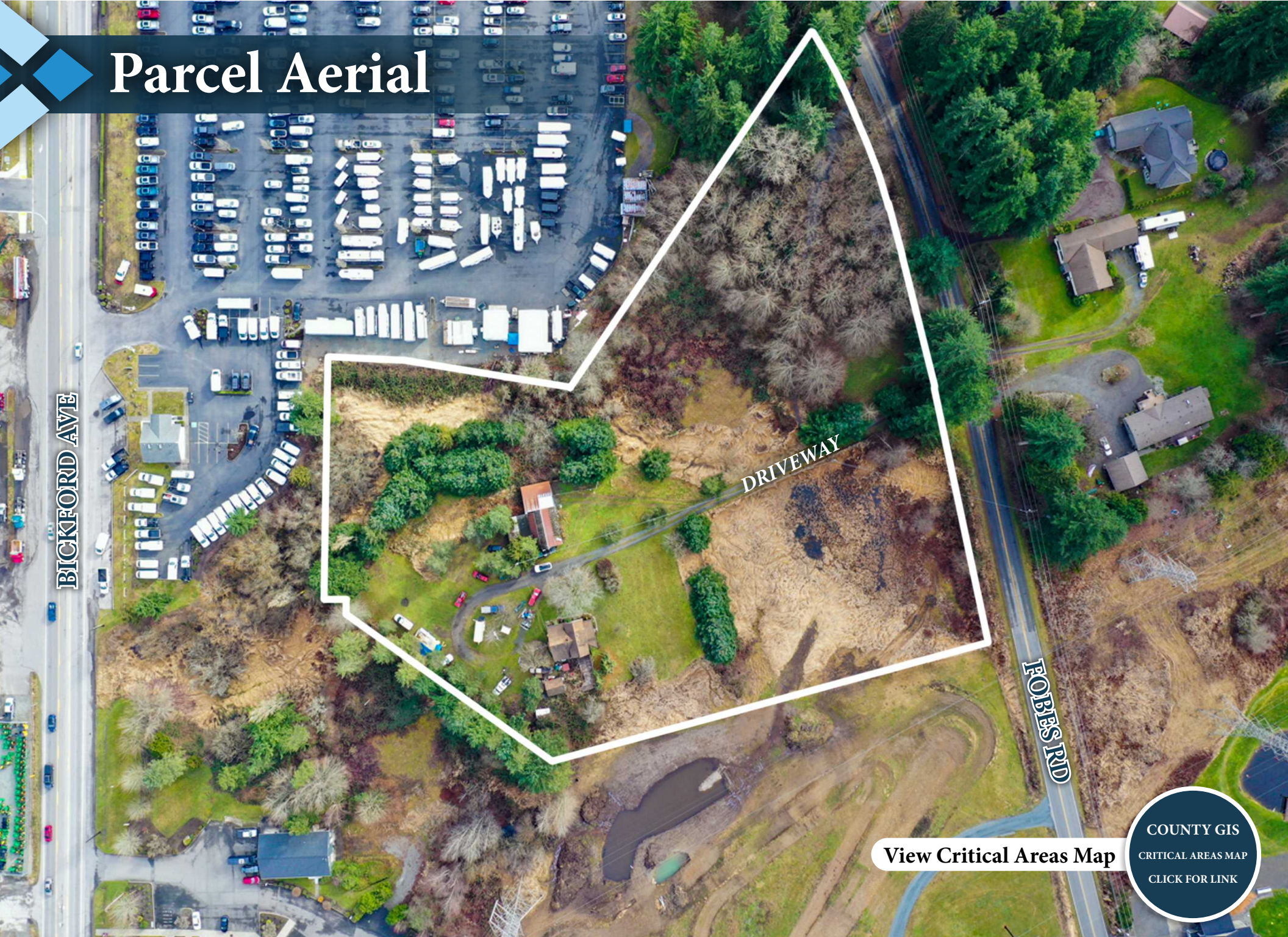
Address:	3101 Fobes Rd, Snohomish, WA 98290
Current Use:	Single Family Residence
Parcel Number:	280501-002-011-00 (Snohomish County)
Land Area:	4.64 Acres (202,118 SF)
Zoning:	BP (Business Park), City of Snohomish
Permitted Uses:	Light Manufacturing, Warehousing, Storage, Construction Yard, Retail, etc.



This document has been prepared by The Remlinger Group for advertising and general information only. The information contained herein has been obtained from reliable sources. However, any prospective buyer or tenant should verify all information relating to this property and contained herein.

www.RemlingerGroup.com

Parcel Aerial



[View Critical Areas Map](#)

COUNTY GIS
CRITICAL AREAS MAP
[CLICK FOR LINK](#)

Current Utilities



WATER

City of Everett



POWER

Snohomish PUD



SEWER

Private Septic

City of Snohomish Sewer Available within Fobes Rd. Sewer line will need to be extended to property line. Contact listing brokers for further information.



Contact Our Team Today!

Drake Remlinger

Founder/CEO

Drake@RemlingerGroup.com

(425) 330-1160

Tej Asher

Partner/COO

TejAsher@RemlingerGroup.com

(425) 320-8834



10422 NE 37th Cir, Suite 100
Kirkland, WA 98033



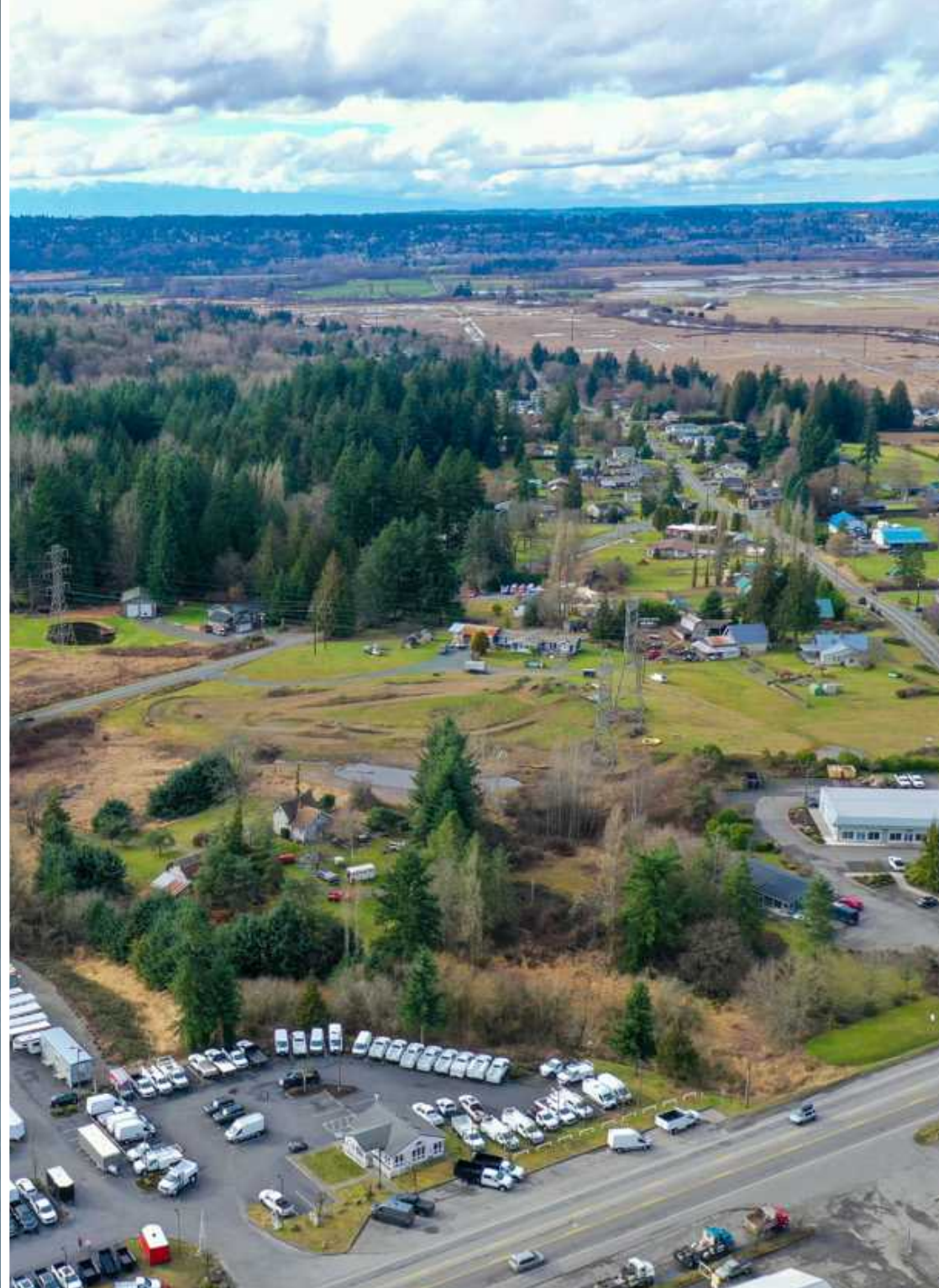
www.RemlingerGroup.com



(425) 998-1619



Info@RemlingerGroup.com



www.RemlingerGroup.com