

For Sale

Office Condo



SALE PRICE REDUCED

Freeman Center

170 S Lincoln Street, Suite 300 & 400
Spokane, Washington 99201

Property Description

Condo Size: 4,200 - 8,400± SF

- 3rd Floor: 4,200± SF
 - Parcel ID #: 35192.1923
- 4th Floor: 4,200± SF
 - Parcel ID #: 35192.1924

3rd Floor Improvements:

- 16+ Chair Conference Rm
- Kitchenette
- 2-Executive Office Suites
- Open Sales Flr. (current configuration with 17-cubicle stations)
- ADA RR

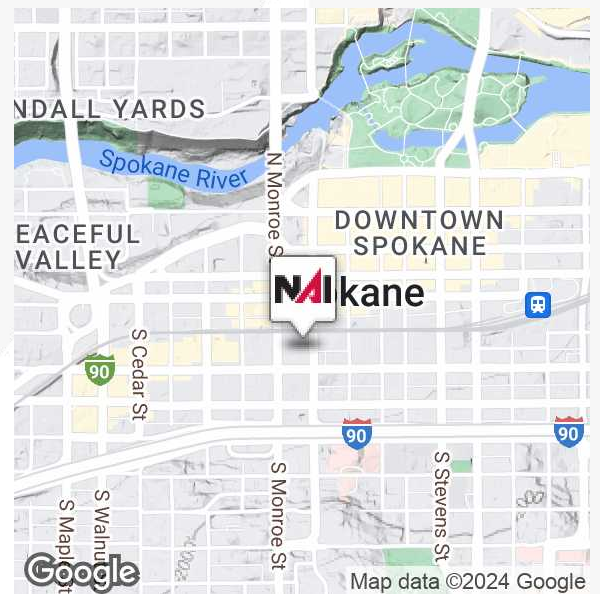
4th Floor Improvements:

- 8-10 Chair Conference Rm
- Kitchenette
- 3-Executive Office Suites
- 2-ADA RR's
- Open Sales Flr. (current configuration with 11-cubicle stations and 4-person reception)

Building Amenities:

- Secured Entry and Elevator
- 4-Car Parks in Secured Garage
- Direct Elev. Access from Garage
- Exterior Building Name Plate Signage
- Residential Living Allowed
- Exposed Brick and Beam

Sale Price: ~~\$735,000 per floor or \$1,344,000 for both floors~~
\$675,000 per floor or \$1,250,000 for both floors



For more information

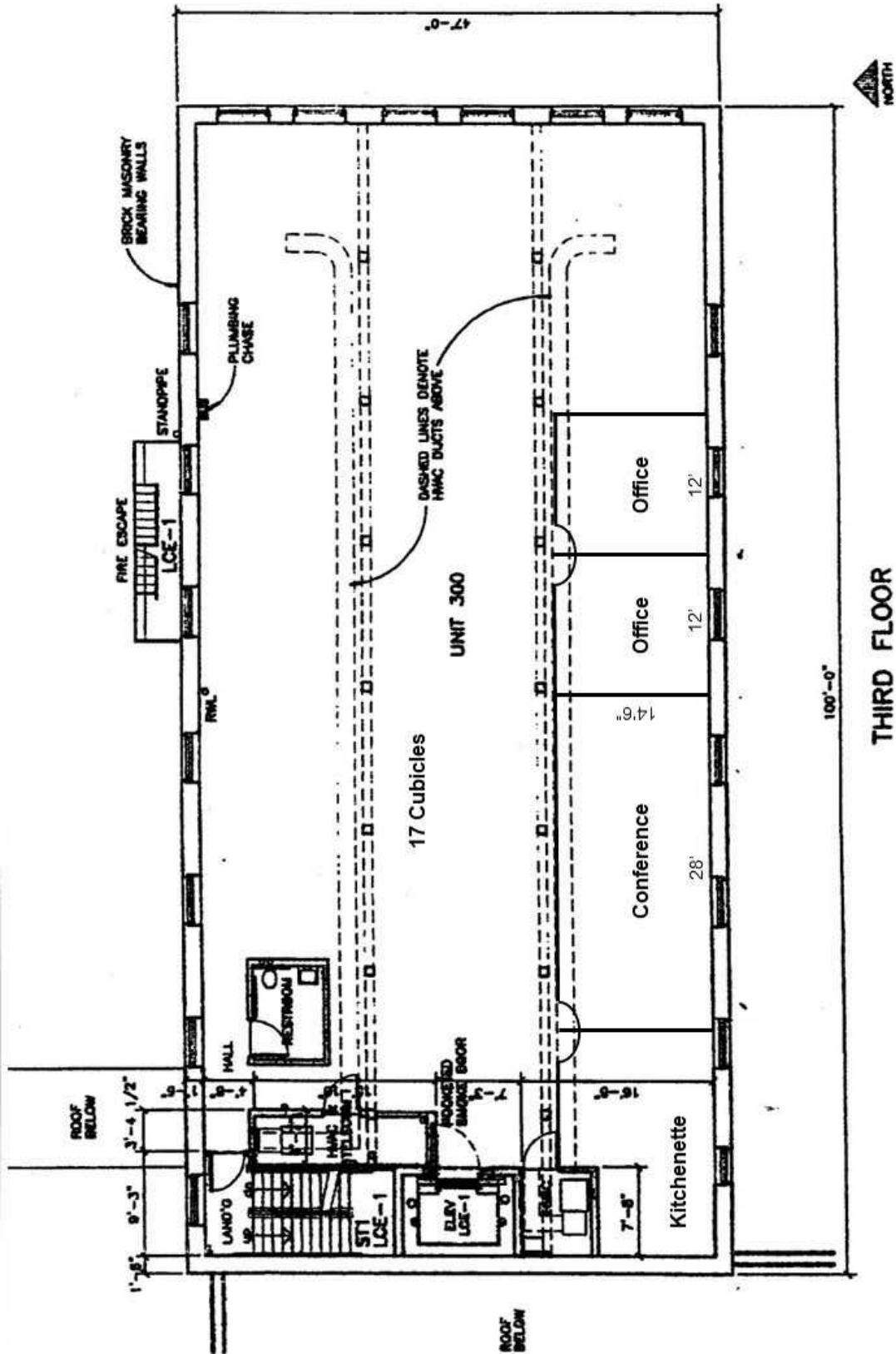
Mark C. McLees

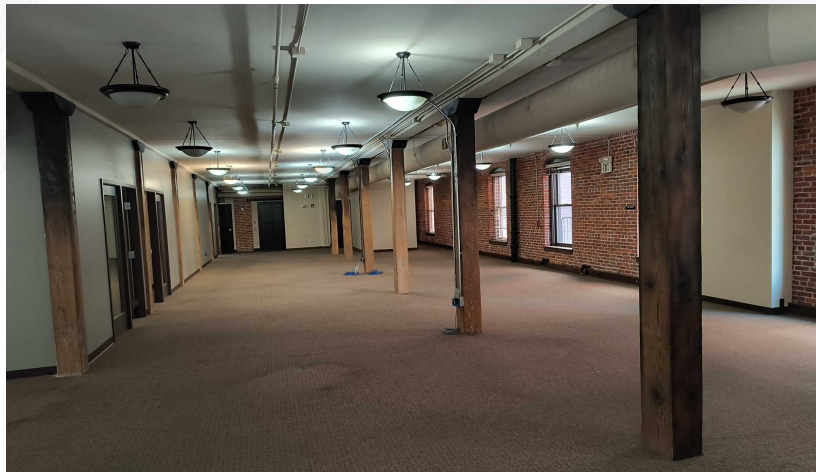
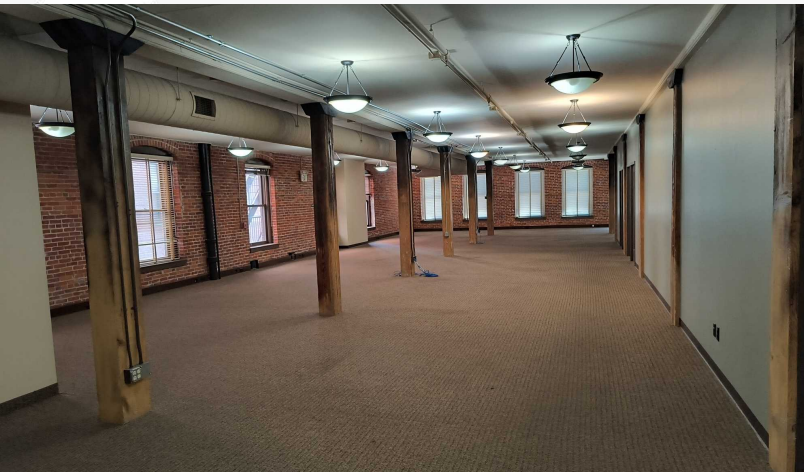
O: 509 622 3554

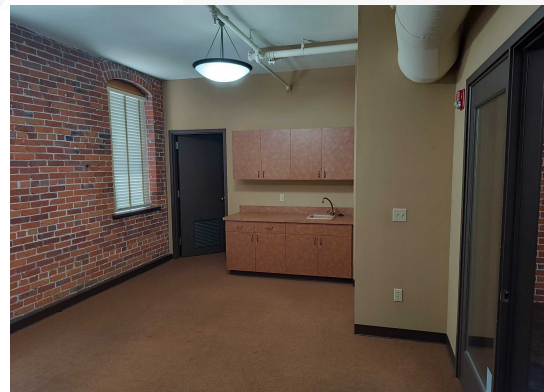
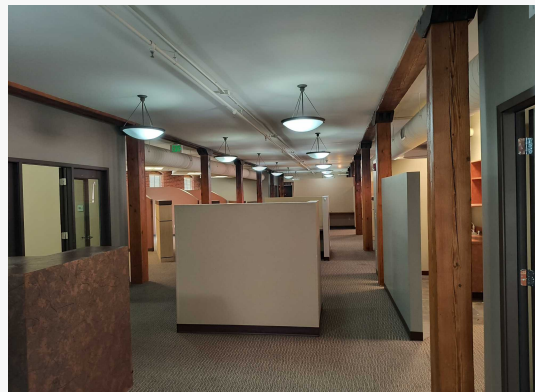
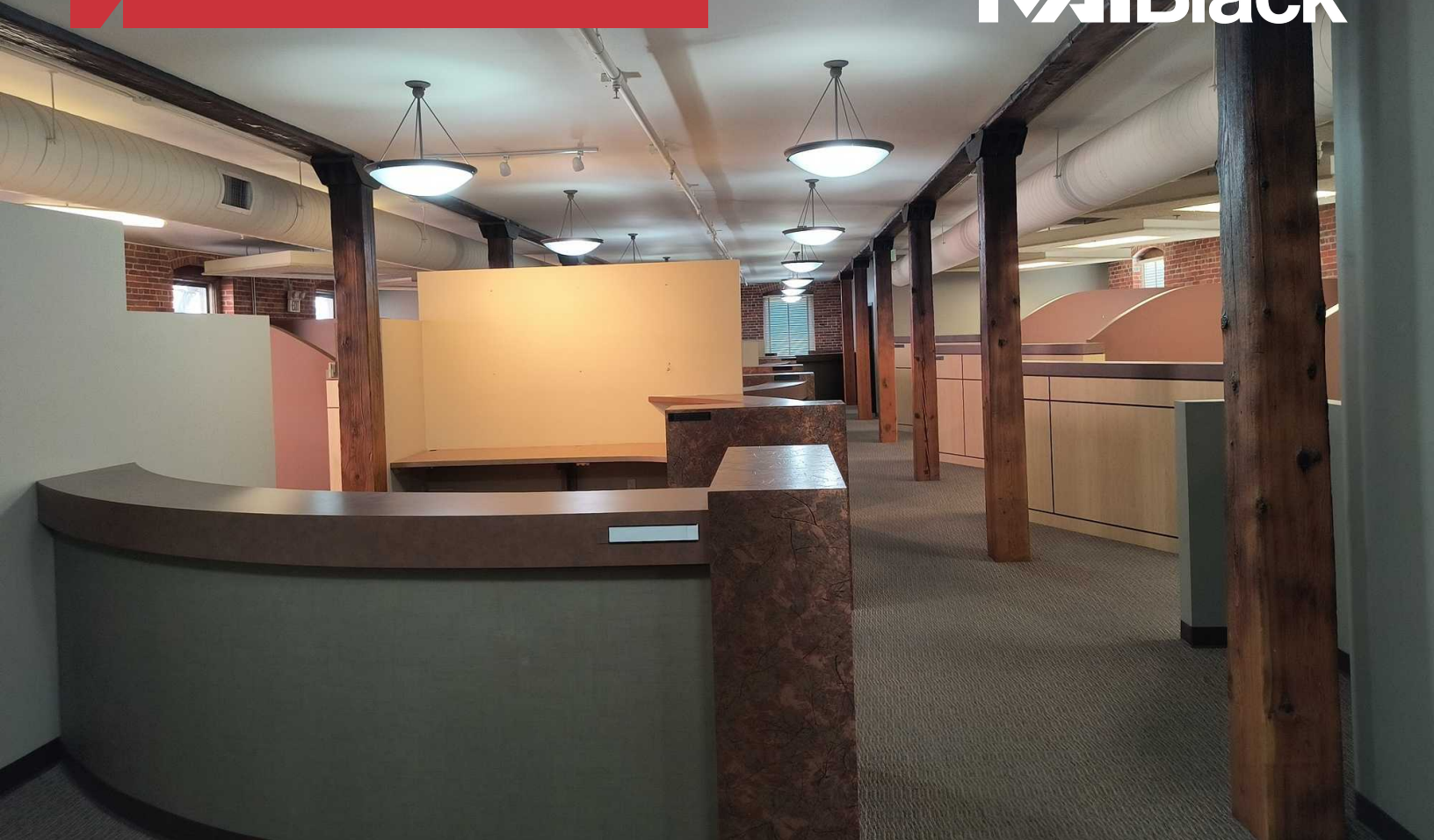
mmclees@naiblack.com

No warranty or representation, expression or implied, is made as to the accuracy of the information contained herein, and the same is submitted subject to errors, omissions, change or price, rental or other conditions, prior to sale, lease, financing, or withdrawal without notice, and of special listing conditions imposed by our principals no warranties or representations are made as to the condition of the property or any hazards contained therein or any to be implied.

801 W. Riverside Avenue, Suite 300
 Spokane, WA 99201
 509 623 1000 tel
naiblack.com

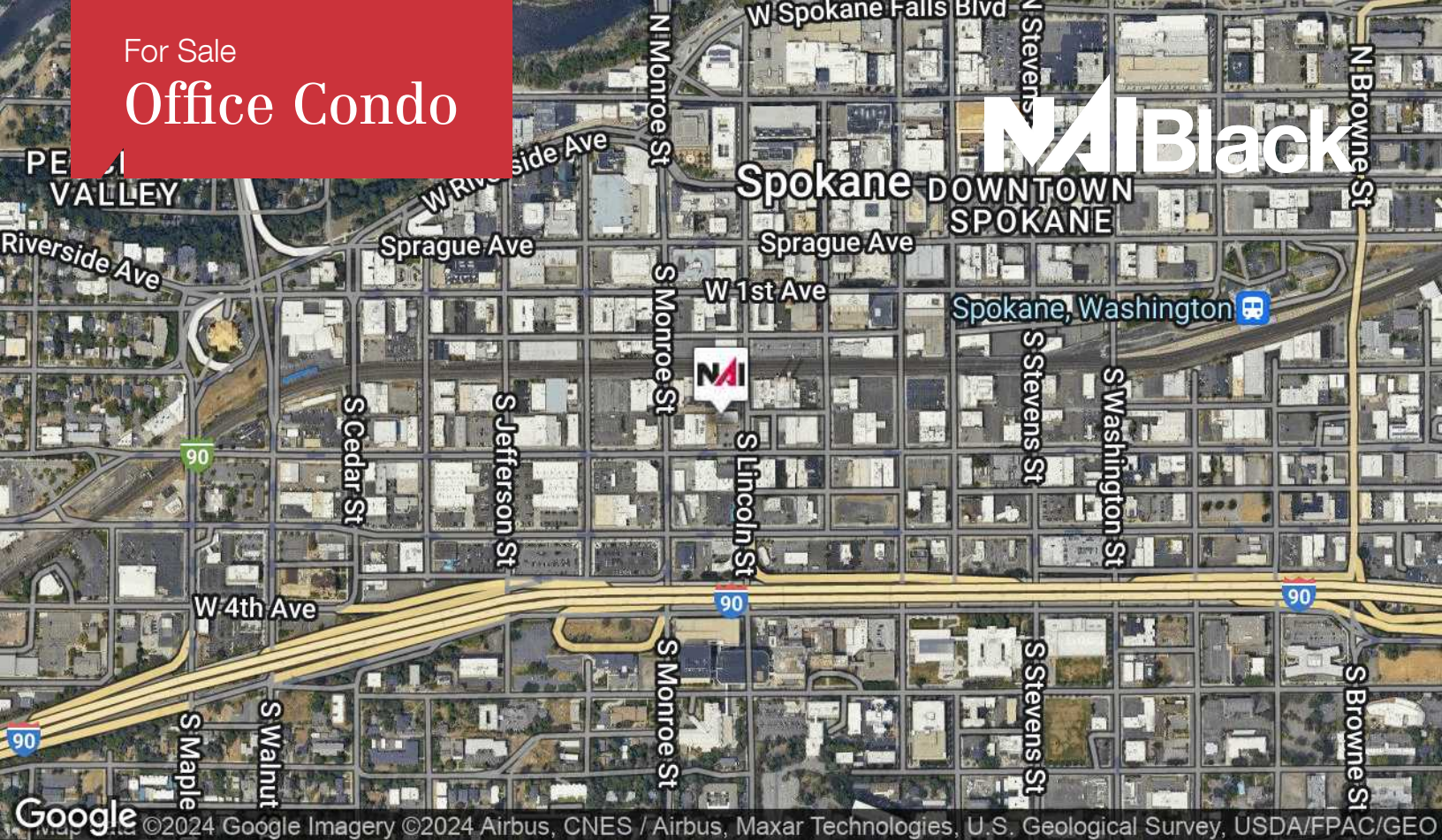




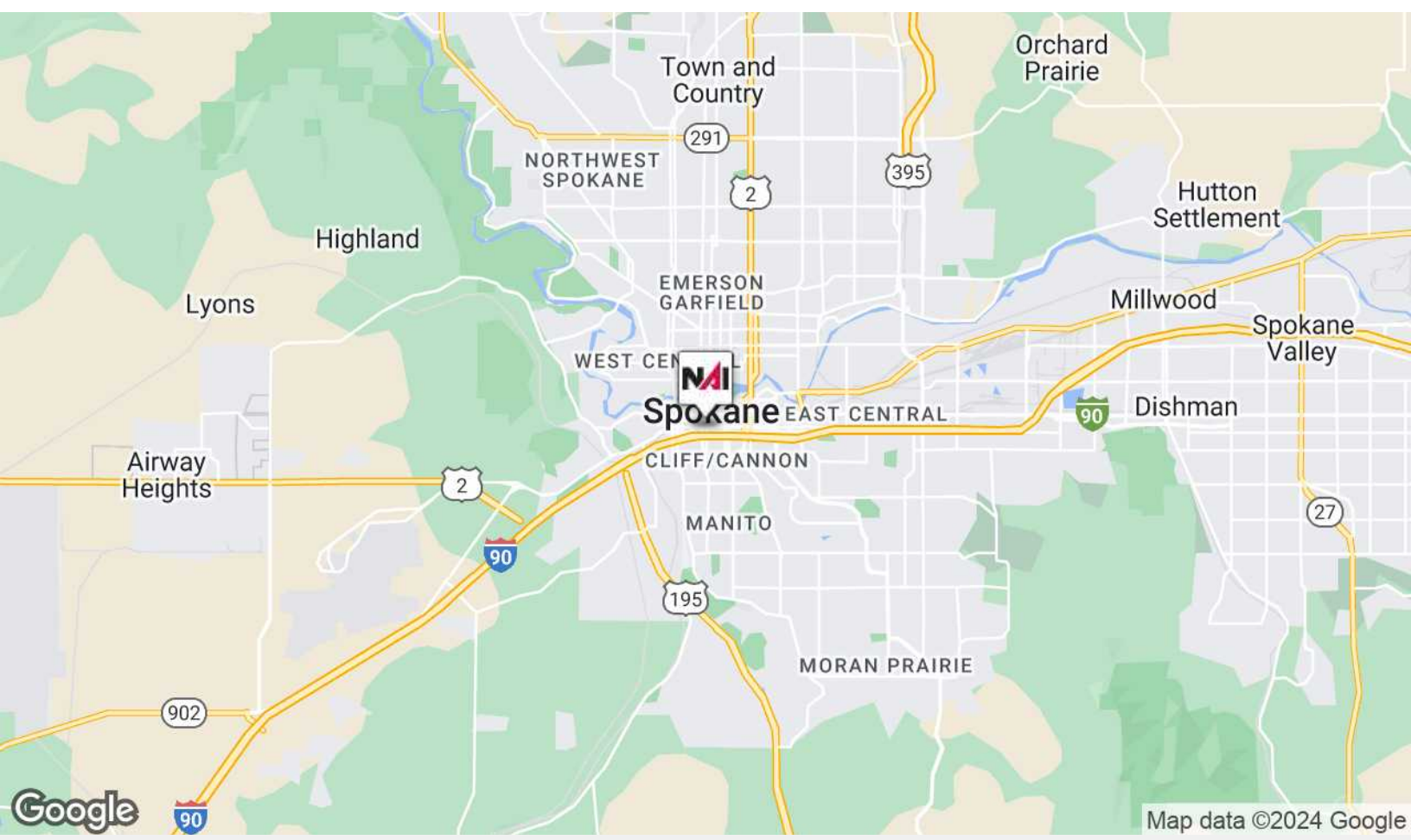


For Sale

Office Condo



©2024 Google Imagery ©2024 Airbus, CNES / Airbus, Maxar Technologies, U.S. Geological Survey, USDA/FPAC/GEO



No warranty or representation, expression or implied, is made as to the accuracy of the information contained herein, and the same is submitted subject to errors, omissions, change or price, rental or other conditions, prior to sale, lease, financing, or withdrawal without notice, and of special listing conditions imposed by our principals no warranties or representations are made as to the condition of the property or any hazards contained therein or any to be implied.

801 W. Riverside Avenue, Suite 300
Spokane, WA 99201
509 623 1000 tel
naiblack.com