

FOR SALE

FORMER RUSH DRAKE INSURANCE

12354 LAKE CITY WAY NE, SEATTLE, WA

A 2,720 SF office building for sale, located in North Seattle with easy access to I-5

Former insurance office

1,320 square feet of land

Two stories

NC3P-75 (M) zoning

3 off-street parking stalls in secure garage

Vacant, available now

\$1,200,000 asking price

Possible seller financing

3.5% selling office commission

2,720

SF AVAILABLE

\$1.2M

ASKING PRICE

TWO

STORIES

KEN HIRATA

206.296.9625

ken.hirata@kidder.com

JEFF LOFTUS

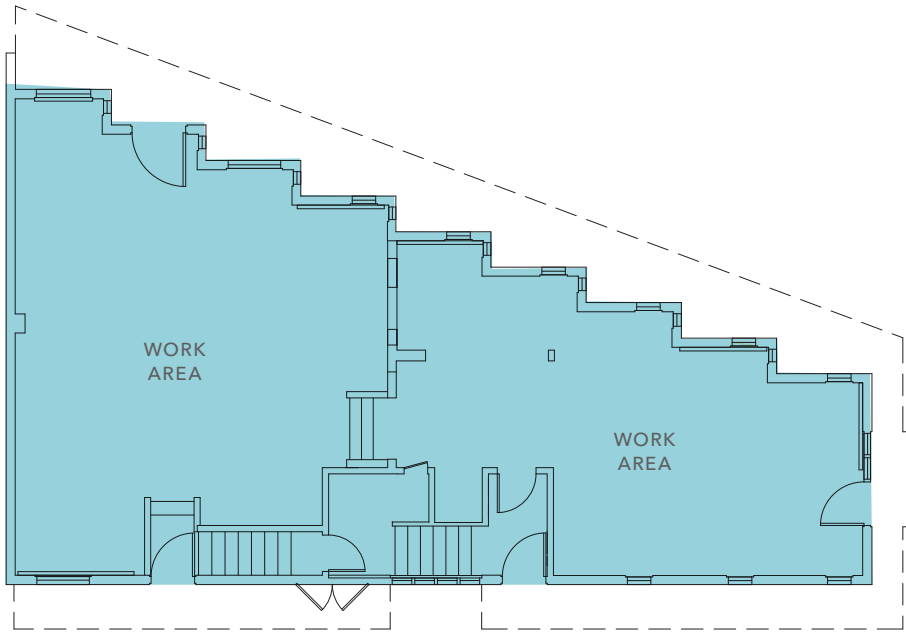
206.248.7326

jeff.loftus@kidder.com

KIDDER.COM

This information supplied herein is from sources we deem reliable. It is provided without any representation, warranty, or guarantee, expressed or implied as to its accuracy. Prospective Buyer or Tenant should conduct an independent investigation and verification of all matters deemed to be material, including, but not limited to, statements of income and expenses. Consult your attorney, accountant, or other professional advisor.

**km Kidder
Mathews**



2,720 SF

AVAILABLE

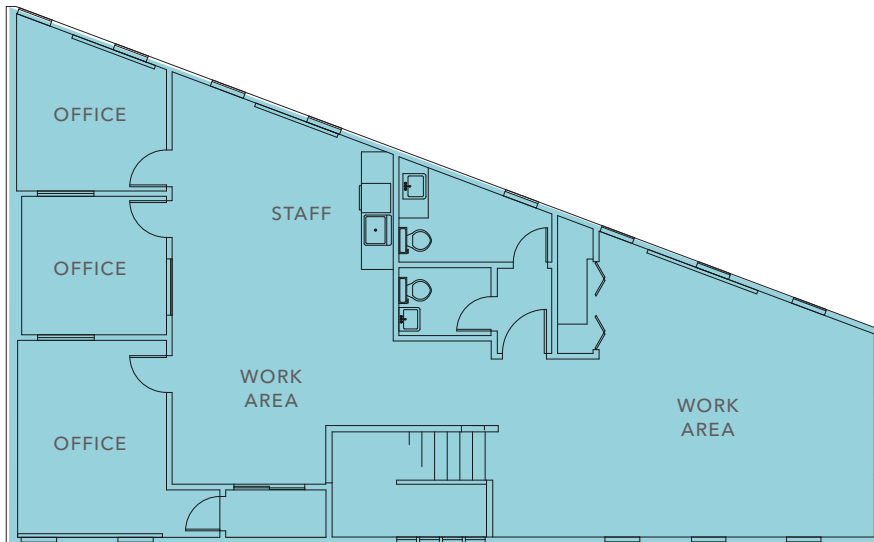
\$1.2M

ASKING PRICE

NOW

AVAILABLE

FIRST FLOOR PLAN: 1,372 SF



SECOND FLOOR PLAN: 1,348 SF

KEN HIRATA 206.296.9625 | ken.hirata@kidder.com

JEFF LOFTUS 206.248.7326 | jeff.loftus@kidder.com

KIDDER.COM

This information supplied herein is from sources we deem reliable. It is provided without any representation, warranty, or guarantee, expressed or implied as to its accuracy. Prospective Buyer or Tenant should conduct an independent investigation and verification of all matters deemed to be material, including, but not limited to, statements of income and expenses. Consult your attorney, accountant, or other professional advisor.

