

WEST CANYON LOGISTICS

FOR LEASE/SALE OR BTS

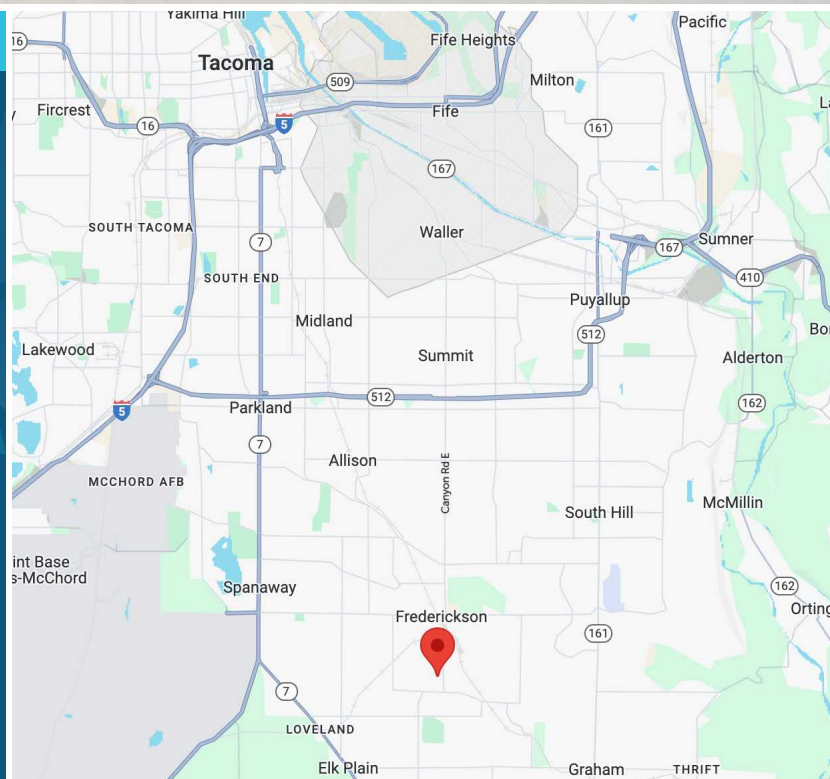
5211 196TH ST E | SPANAWAY, WA

10 ACRES - PRIME FREDERICKSON LOCATION



PROPERTY INFORMATION

- Available Size: \pm 178,277 SF
- Land Size: 22.7 acres (\pm 10.23 usable acres)
- Grade Level Doors: 4
- Dock High Doors: 36
- Clear Height: 36' - 40'
- SEPA approved
- For Lease/Sale or BTS
- Lease Rate: Call Broker
- Sale Price: Call Broker



SCOTT PRICE
253.279.3710
sprice@neilwalter.com

KERMIT JORGENSEN
206.787.1475
kjorgensen@neilwalter.com

MIKE AVILA
360.832.2304
avila@pacrimre.net



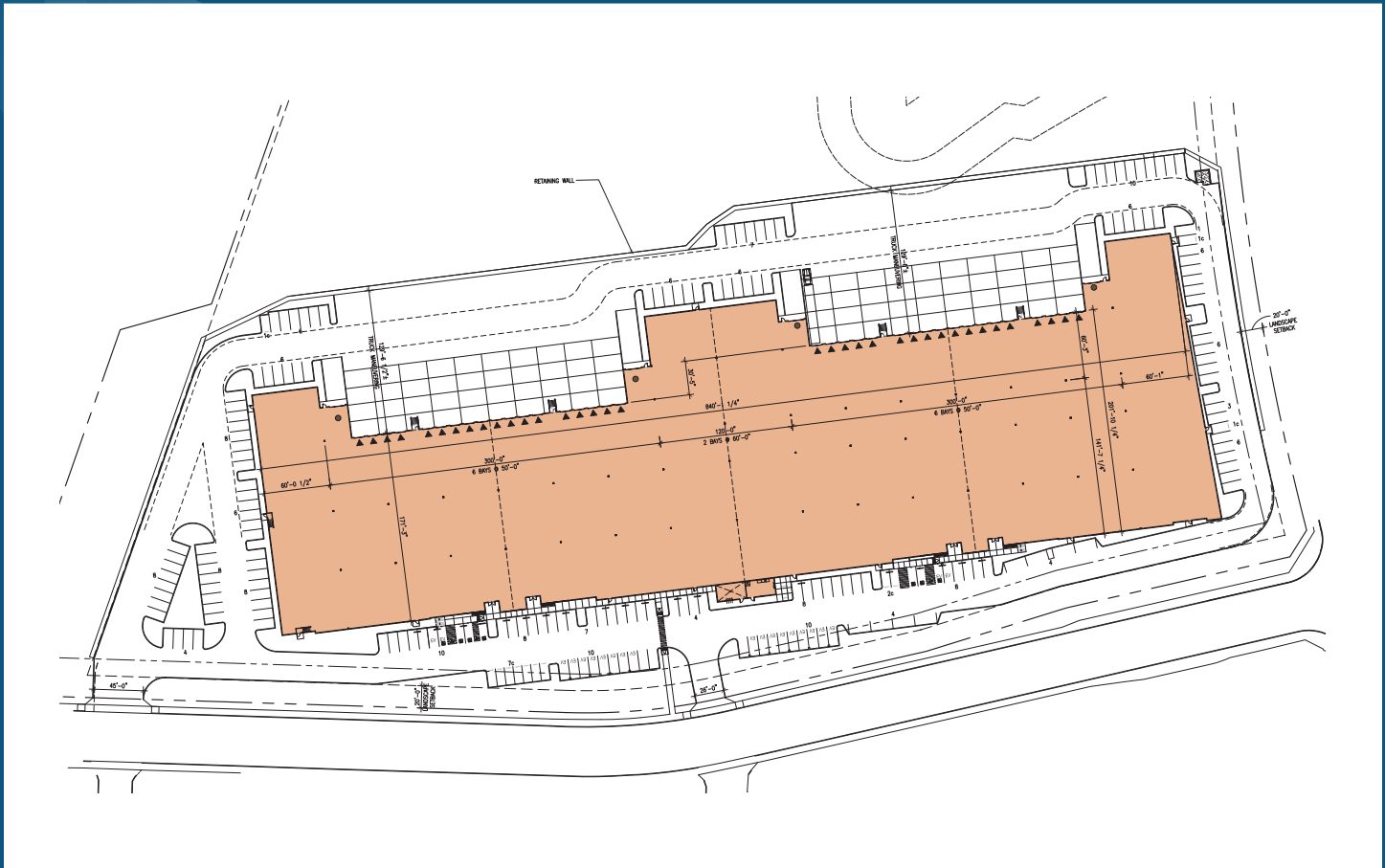
A Development By:



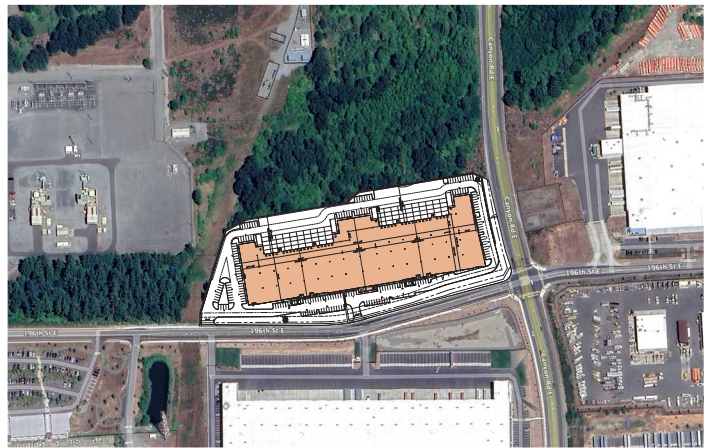
All information references in this document are approximate. The information contained herein is contained from sources deemed reliable. It is provided without representation, warranty, or guarantee, expressed or implied as to accuracy. Prospective buyer or tenant should conduct its own independent investigation relating to the property, government codes and regulations, allowed uses, and all other matters, regardless of whether they are referred to or contained in this document.

WEST CANYON LOGISTICS

5211 196TH ST E | SPANAWAY, WA



NEIGHBORING BUSINESSES



SCOTT PRICE
253.279.3710
sprice@neilwalter.com

KERMIT JORGENSEN
206.787.1475
kjorgensen@neilwalter.com

MIKE AVILA
360.832.2304
avila@pacrimre.net



A Development By:



All information references in this document are approximate. The information contained herein is contained from sources deemed reliable. It is provided without representation, warranty, or guarantee, expressed or implied as to accuracy. Prospective buyer or tenant should conduct its own independent investigation relating to the property, government codes and regulations, allowed uses, and all other matters, regardless of whether they are referred to or contained in this document.