

Office Condo For Sale - Investment Opportunity

// **312 W SPRAGUE AVE**

Spokane, WA 99201



// PRESENTED BY:

CORY BARBIERI
VICE PRESIDENT
509.344.4901
CBARBIERI@G-B.COM

STEPHEN BARBIERI
COMMERCIAL LEASING & SALES MANAGER
509.344.4919
SBARBIERI@G-B.COM



// PROPERTY SUMMARY



PROPERTY DESCRIPTION

- Office Condo For Sale in Downtown Spokane!
- Long Term NNN Lease in Place
- 7.1% Cap Rate
- Beautifully renovated office condo in the historic Morgan Building
- 5 Offices
- Conference Room and Kitchenette
- Includes Additional Storage Space
- Parcel #35184.2913
- Seller Financing Available

SPACES	PRICE	SPACE SIZE		
For Sale	\$425,000	2,328 SF		
DEMOGRAPHICS	0.25 MILES	0.5 MILES	1 MILE	
Total Households	546	1,884	7,637	
Total Population	808	2,553	14,071	
Average HH Income	\$23,389	\$31,514	\$41,288	

// PRESENTED BY:

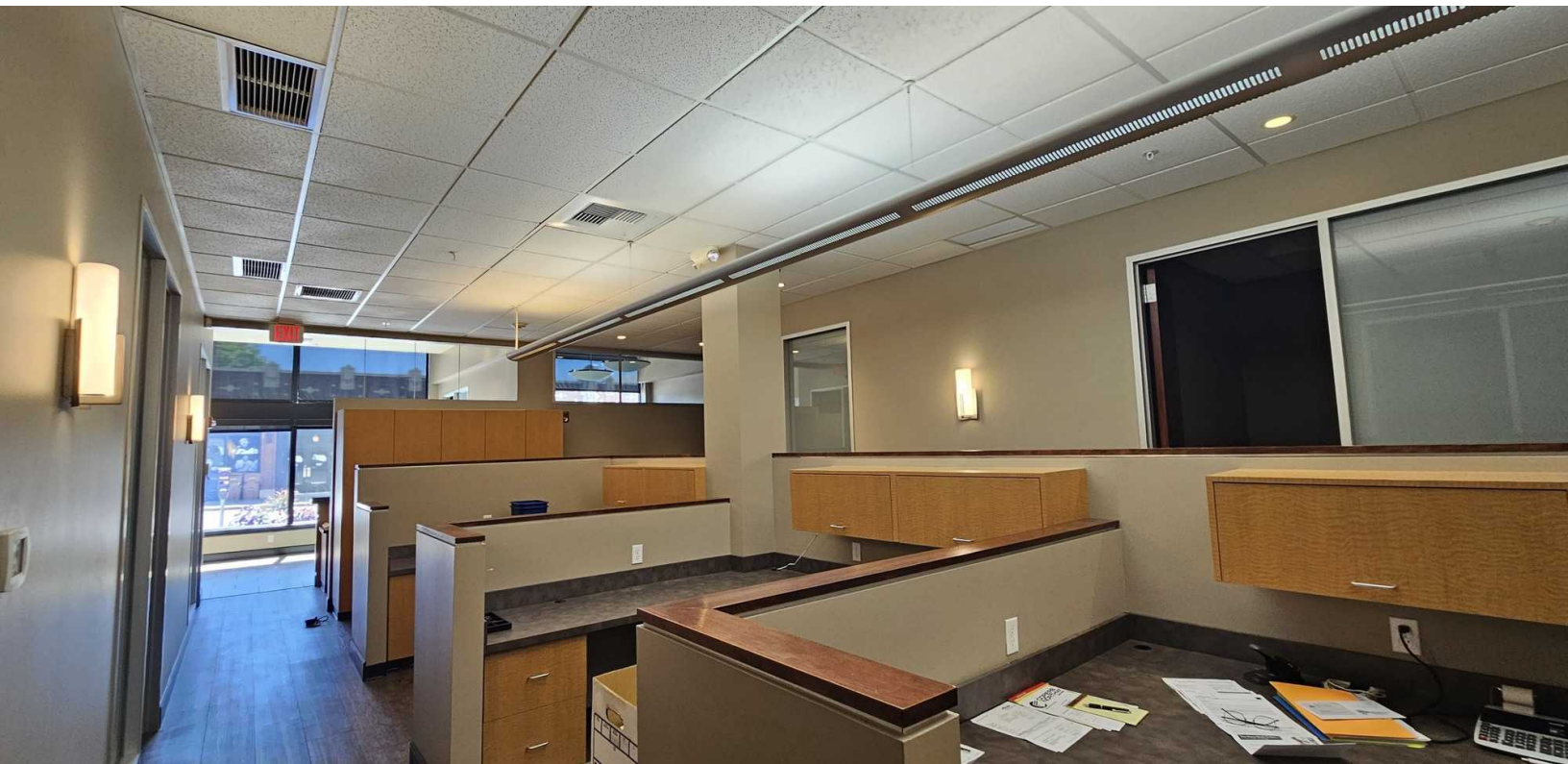
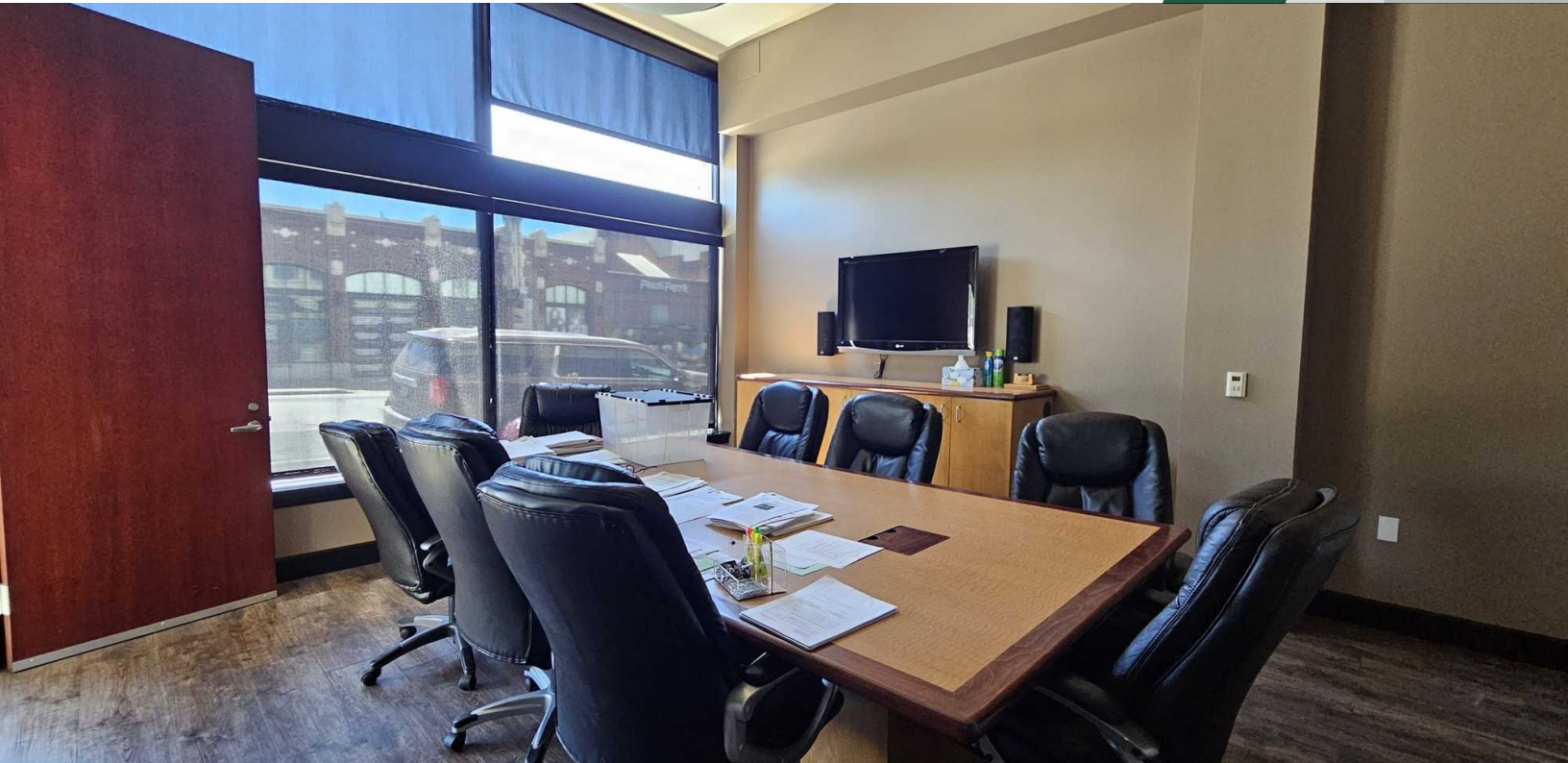
CORY BARBIERI
VICE PRESIDENT
509.344.4901
CBARBIERI@G-B.COM

STEPHEN BARBIERI
COMMERCIAL LEASING & SALES MANAGER
509.344.4919
SBARBIERI@G-B.COM



312 W Sprague Ave // Spokane, WA 99201

// ADDITIONAL PHOTOS



// PRESENTED BY:

CORY BARBIERI

VICE PRESIDENT

509.344.4901

CBARBIERI@G-B.COM

STEPHEN BARBIERI

COMMERCIAL LEASING & SALES MANAGER

509.344.4919

SBARBIERI@G-B.COM



312 W Sprague Ave // Spokane, WA 99201

// ADDITIONAL PHOTOS



// PRESENTED BY:

CORY BARBIERI

VICE PRESIDENT

509.344.4901

CBARBIERI@G-B.COM

STEPHEN BARBIERI

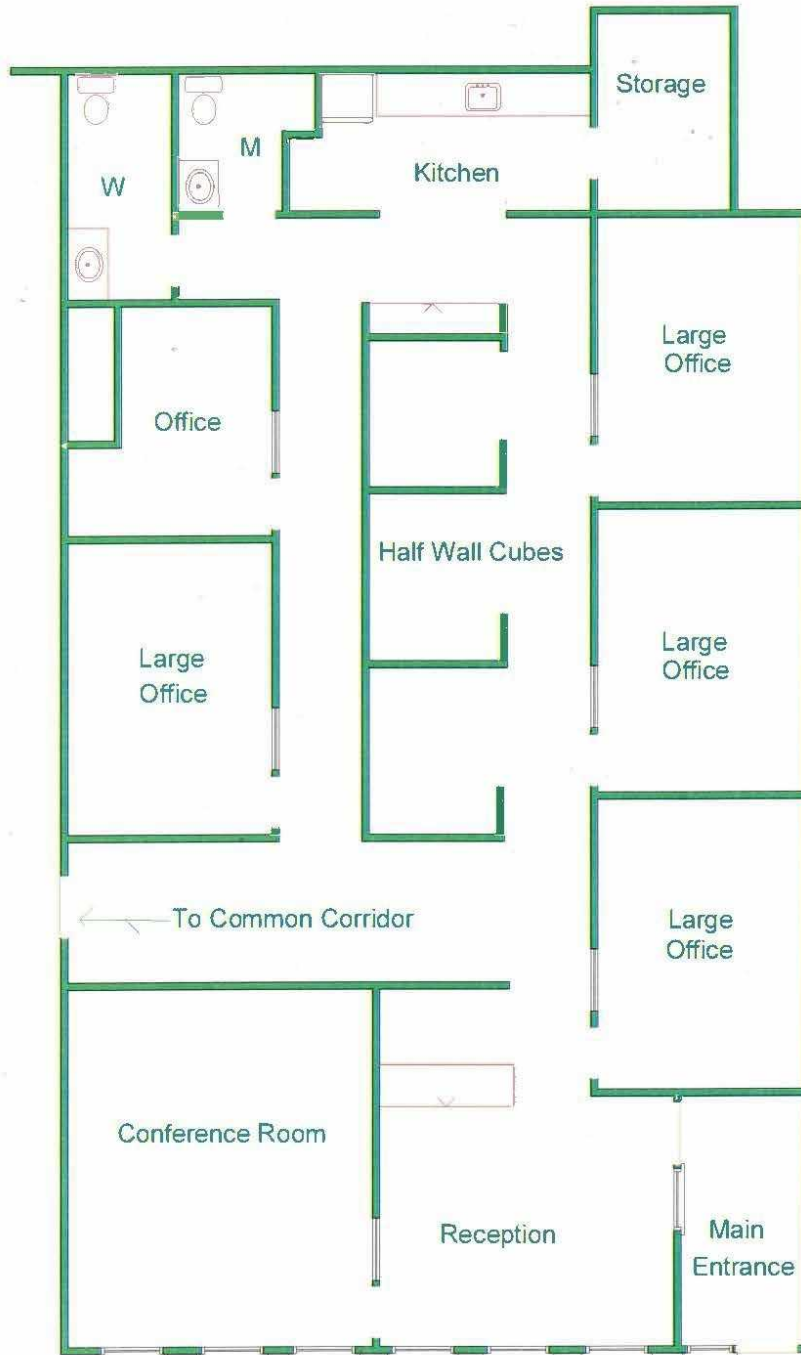
COMMERCIAL LEASING & SALES MANAGER

509.344.4919

SBARBIERI@G-B.COM



// FLOOR PLAN



312 W Sprague

// PRESENTED BY:

CORY BARBIERI
VICE PRESIDENT
509.344.4901
CBARBIERI@G-B.COM

STEPHEN BARBIERI
COMMERCIAL LEASING & SALES MANAGER
509.344.4919
SBARBIERI@G-B.COM



// RETAILER MAP



Google

Imagery ©2023 , Airbus, CNES / Airbus, Maxar Technologies, U.S. Geological Survey, USDA/FPAC/GEO

// PRESENTED BY:

CORY BARBIERI
VICE PRESIDENT
509.344.4901
CBARBIERI@G-B.COM

STEPHEN BARBIERI
COMMERCIAL LEASING & SALES MANAGER
509.344.4919
SBARBIERI@G-B.COM

