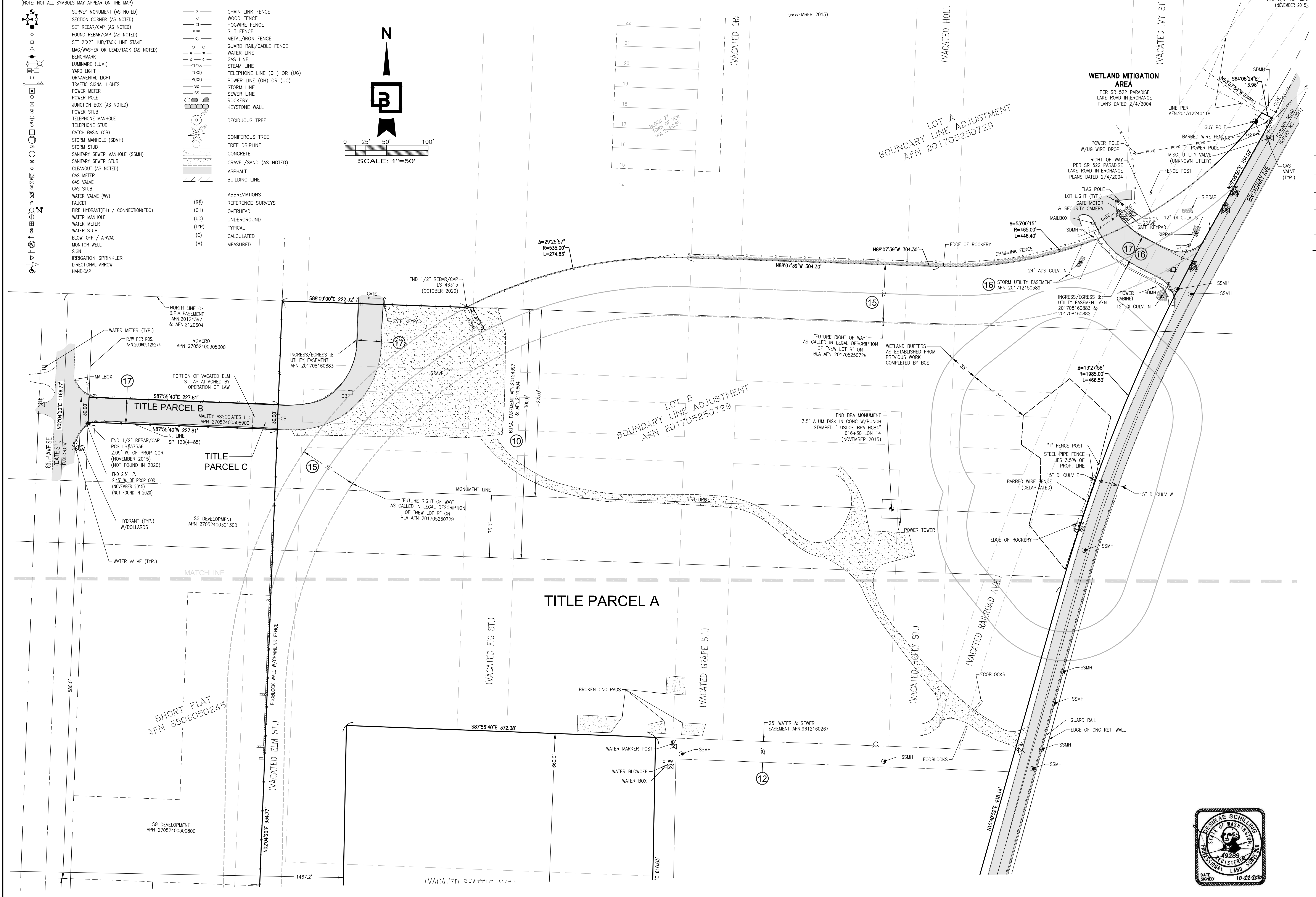
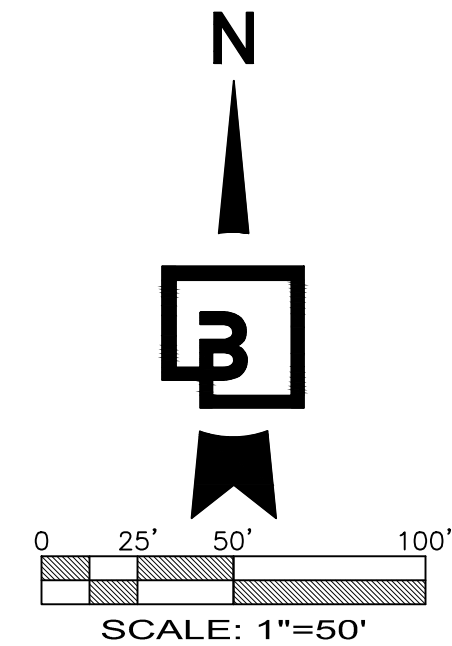


ALTA/NSPS LAND TITLE SURVEY

LEGEND

(NOTE: NOT ALL SYMBOLS MAY APPEAR ON THE MAP)

- | | | | |
|--|--------------------------------------|--|-----------------------------|
| | SURVEY MONUMENT (AS NOTED) | | CHAIN LINK FENCE |
| | SECTION CORNER (AS NOTED) | | WOOD FENCE |
| | SET REBAR/CAP (AS NOTED) | | HOGWIRE FENCE |
| | FOUND REBAR/CAP (AS NOTED) | | SILT FENCE |
| | SET 2"x2" HUB/TACK LINE STAKE | | METAL/IRON FENCE |
| | MAG/WASHER OR LEAD/TACK (AS NOTED) | | GUARD RAIL/CABLE FENCE |
| | BENCHMARK | | WATER LINE |
| | LUMINAIRE (LUM.) | | GAS LINE |
| | YARD LIGHT | | STEAM LINE |
| | ORNAMENTAL LIGHT | | TELEPHONE LINE (OH) OR (UG) |
| | TRAFFIC SIGNAL LIGHTS | | POWER LINE (OH) OR (UG) |
| | POWER METER | | STORM LINE |
| | POWER POLE | | SEWER LINE |
| | JUNCTION BOX (AS NOTED) | | ROCKERY |
| | POWER STUB | | KEYSTONE WALL |
| | TELEPHONE MANHOLE | | DECIDUOUS TREE |
| | TELEPHONE STUB | | CONIFEROUS TREE |
| | CATCH BASIN (CB) | | TREE DRIPLINE |
| | STORM MANHOLE (SDMH) | | CONCRETE |
| | STORM STUB | | GRAVEL/SAND (AS NOTED) |
| | SANITARY SEWER MANHOLE (SSMH) | | ASPHALT |
| | SANITARY SEWER STUB | | BUILDING LINE |
| | CLEANOUT (AS NOTED) | | |
| | GAS METER | | |
| | GAS VALVE | | |
| | GAS STUB | | |
| | WATER VALVE (WV) | | |
| | FAUCET | | |
| | FIRE HYDRANT (FH) / CONNECTION (FDC) | | |
| | WATER MANHOLE | | |
| | WATER METER | | |
| | WATER STUB | | |
| | BLOW-OFF / AIRVAC | | |
| | MONITOR WELL | | |
| | SIGN | | |
| | IRRIGATION SPRINKLER | | |
| | DIRECTIONAL ARROW | | |
| | HANDICAP | | |



No.	Date	By	Clk.	Appr.	Revision

Title: ALTA/NSPS LAND TITLE SURVEY
 P.T.N. OF THE SW1/4 OF THE SW1/4 OF SEC. 24,
 P.T.N. OF THE NE1/4 OF THE SW1/4 OF SEC. 24,
 P.T.N. OF THE SE1/4 OF THE SW1/4 OF SEC. 24,
 TWP. 27 N., RGE 5 EAST, W. M.
 SNOHOMISH COUNTY STATE OF WASHINGTON

For: MALTBY PAPE

Scale:
 Horizontal 1"=50'
 Vertical

Designed: [Signature]
Drawn: [Signature]
Checked: [Signature]
Approved: [Signature]
Date: 10/5/20

Barghausen Consulting Engineers, Inc.
 18215 72nd Avenue South
 Kent, WA 98032
 425.251.6222
barghausen.com

Job Number: 21451
Sheet: 2 of 3

File: P:\21000s\21451\survey\21451-1A01-south-lot.dwg Date/Time: Oct 22, 2020 3:08pm Scale: 1"=50' d:\schilling\1818\refer\2020.dwg, 17622b0d3.dwg, 17622b0d3.dwg

