



# 18715 141ST AVE NE

50,958 SF Warehouse  
Available For Sale or Lease in Woodinville

18715 141ST AVE NE | WOODINVILLE, WA

*50,958 SF*  
TOTAL BUILDING AREA

*1,200 AMP*  
277/480V, 3-PHASE POWER

*36,165 SF*  
WAREHOUSE

*14,793 SF*  
OFFICE

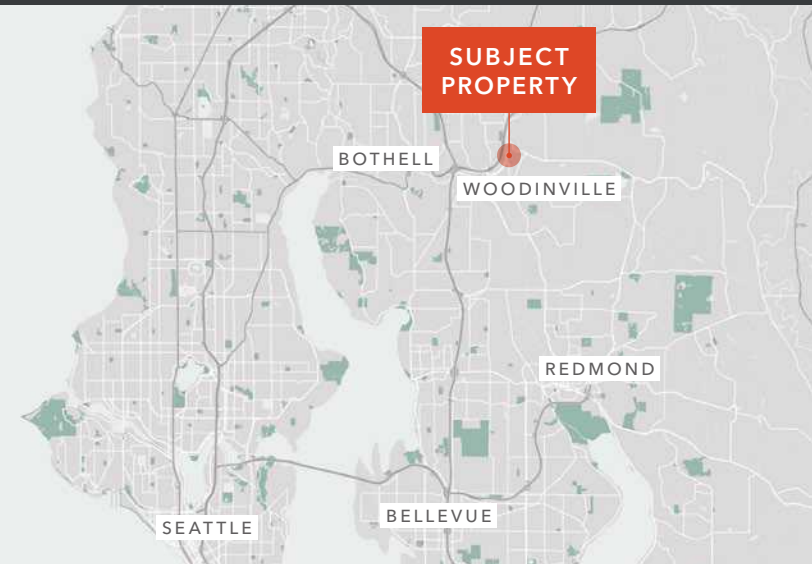


18715 141ST AVE NE | WOODINVILLE, WA



## PROPERTY OVERVIEW

ADDRESS	18715 141st Ave NE, Woodinville, WA
BUILDING	50,958 SF
WAREHOUSE	36,165 SF
OFFICE	14,793 SF
HVAC	In office
LOADING	5 dock-high, 2 grade-level (1 oversized dock, 1 oversized grade)
POWER	1200 amp, 277/480v 3-phase
TENANCY	Available April 1, 2025
PRICING	Contact Brokers



AVAILABLE FOR SALE OR LEASE

KIDDER MATHEWS



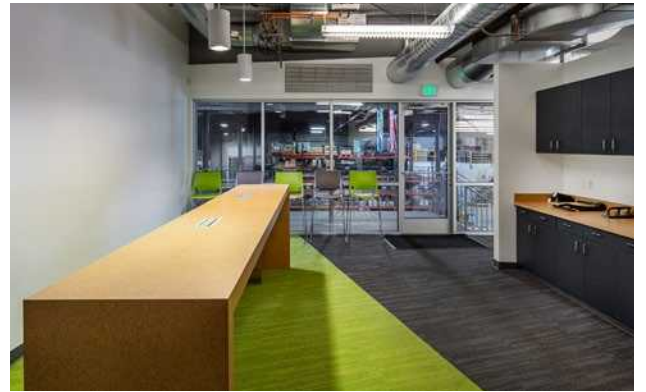




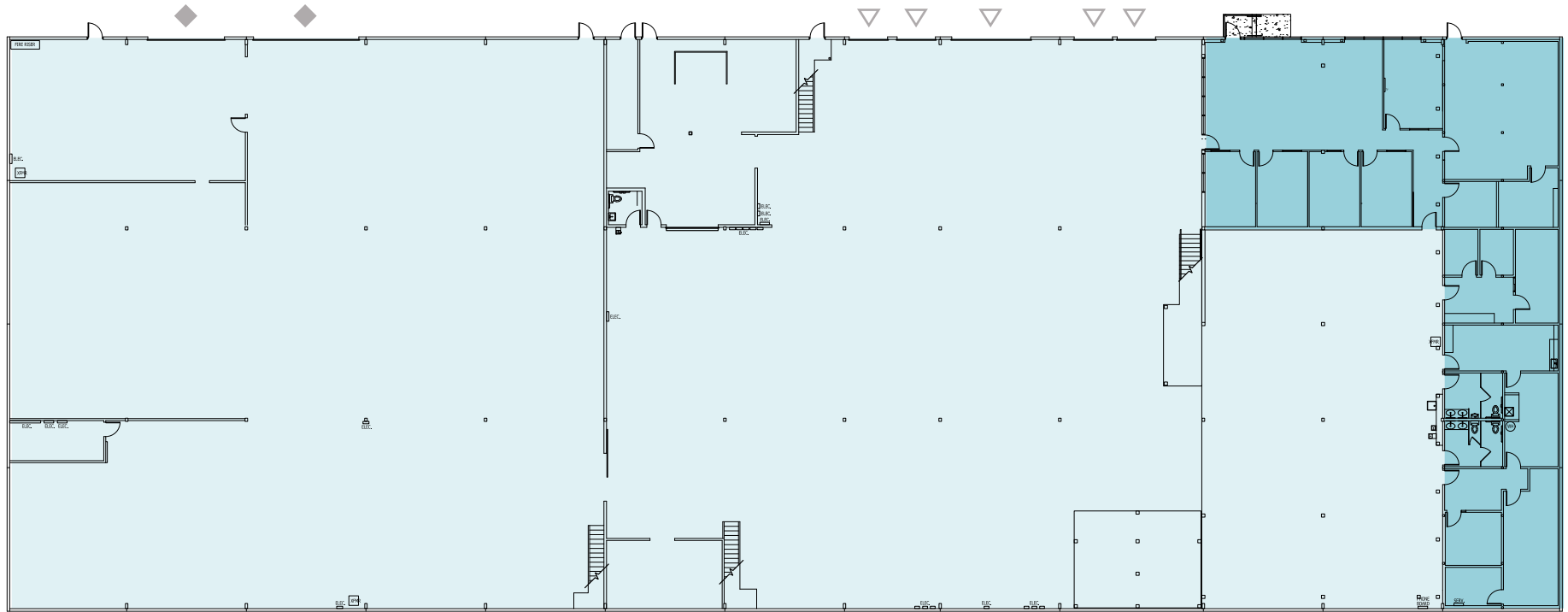
18715 141ST AVE NE | WOODINVILLE, WA







# LEVEL ONE FLOOR PLAN



## LEGEND

- Office
- Warehouse
- △ Dock-High Loading
- ◆ Drive-In Door

*36,165 SF*

WAREHOUSE AREA

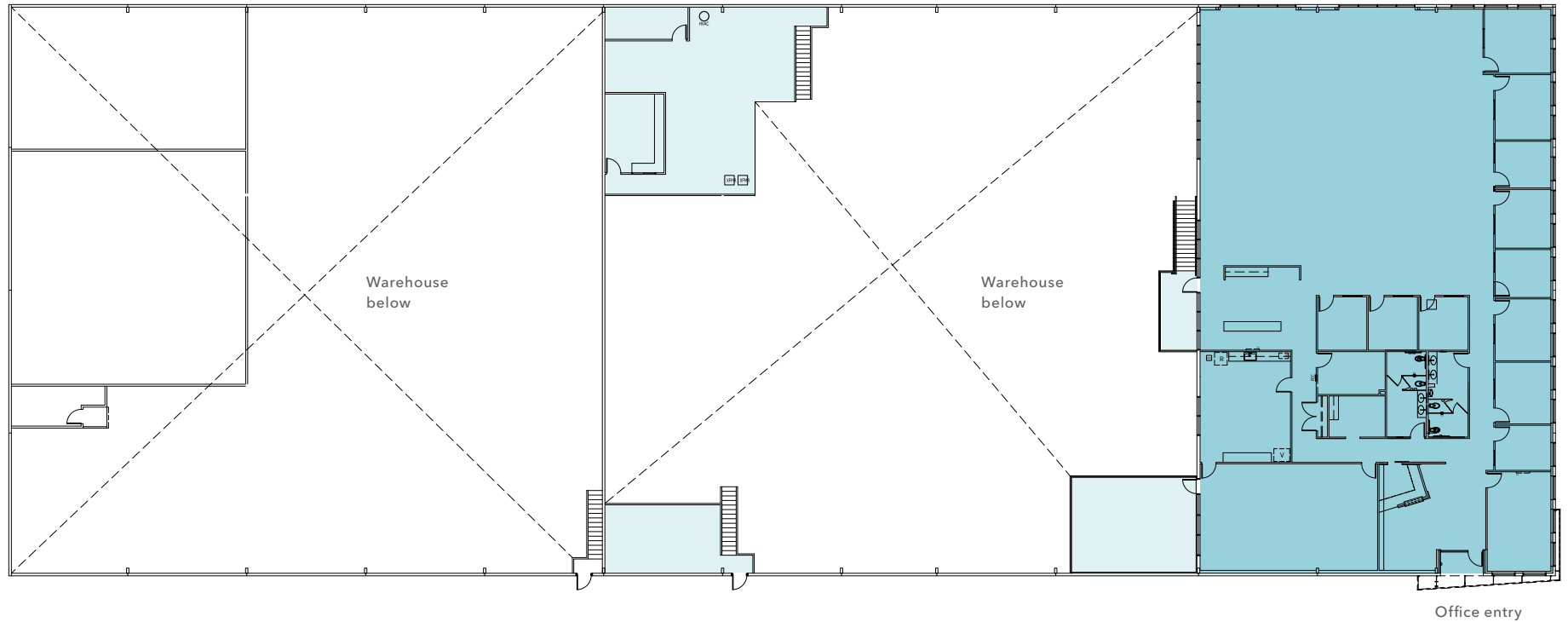
*4,983 SF*

OFFICE AREA

*41,148 SF*

LEVEL ONE TOTAL AREA

# LEVEL TWO FLOOR PLAN



*2,148 SF*  
WAREHOUSE AREA

*9,810 SF*  
OFFICE AREA

*11,958 SF*  
LEVEL TWO TOTAL AREA

### LEGEND

- Office
- Warehouse



18715 141ST AVE NE | WOODINVILLE, WA







*Exclusively listed by*

**TODD GAUTHIER**  
Executive Vice President  
425.450.1118  
todd.gauthier@kidder.com

**JASON BLOOM**  
Executive Vice President  
425.450.1102  
jason.bloom@kidder.com

**KIDDER.COM**