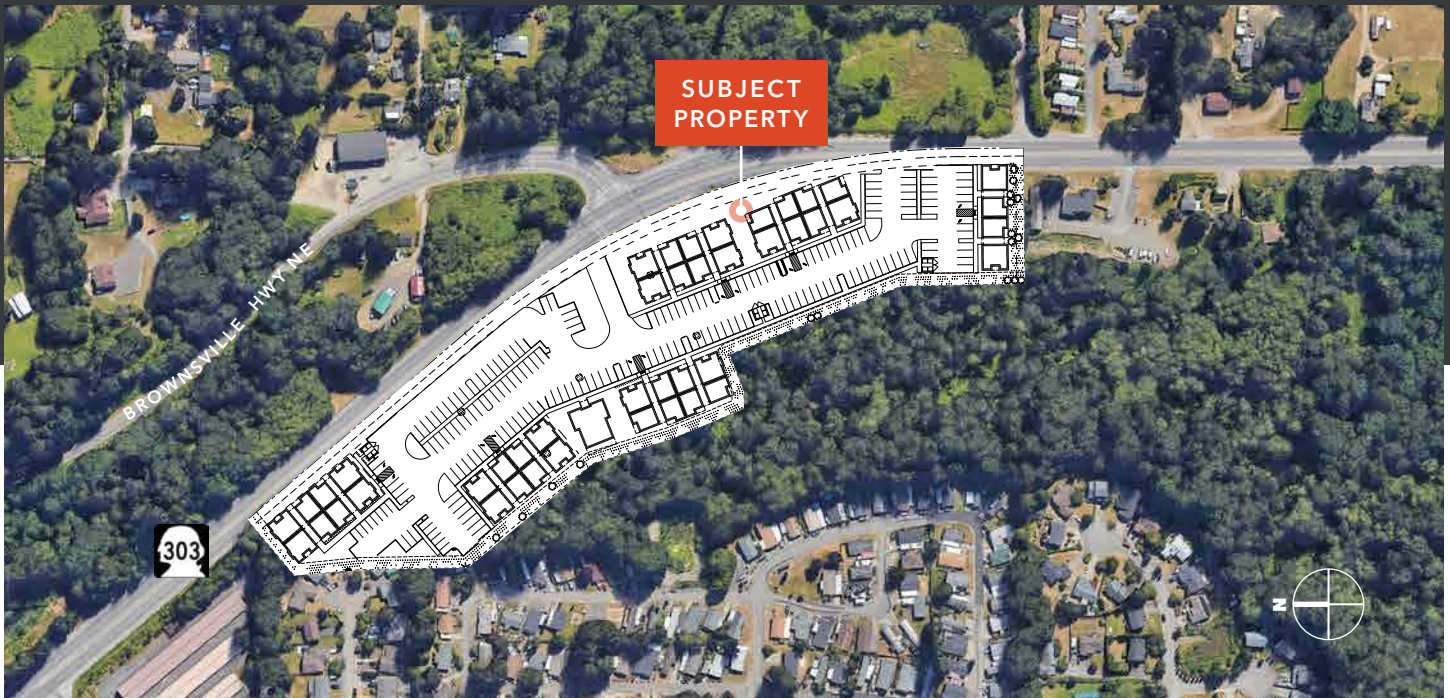


FOR SALE

WAAGA WAY & BROWNSVILLE HWY NE

KITSAP COUNTY, WA



132 unit multifamily development available for sale in Kitsap County

10.39 acres available (452,588 SF)

1,138 feet of Hwy-303 frontage

1.5 parking stalls/unit, 198 stalls total

Wetland delineation completed

Interchange Control Evaluation completed

90% civil / grading plans completed

Land Use Approval anticipated Q4 2024

RYAN HADDOCK

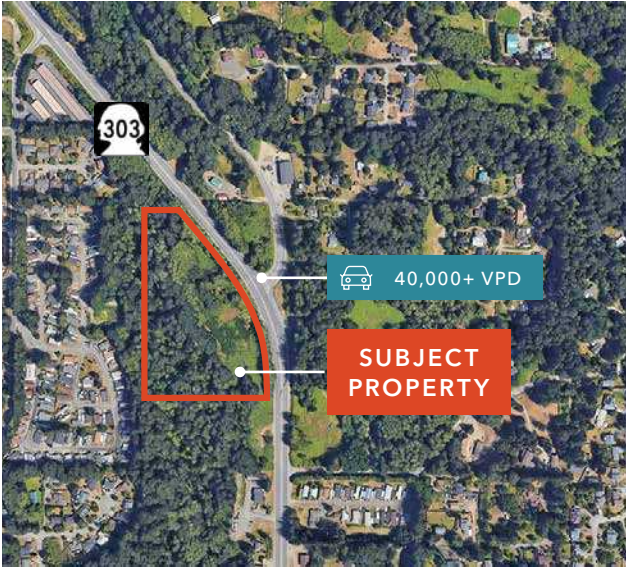
360.596.9151

ryan.haddock@kidder.com

KIDDER.COM

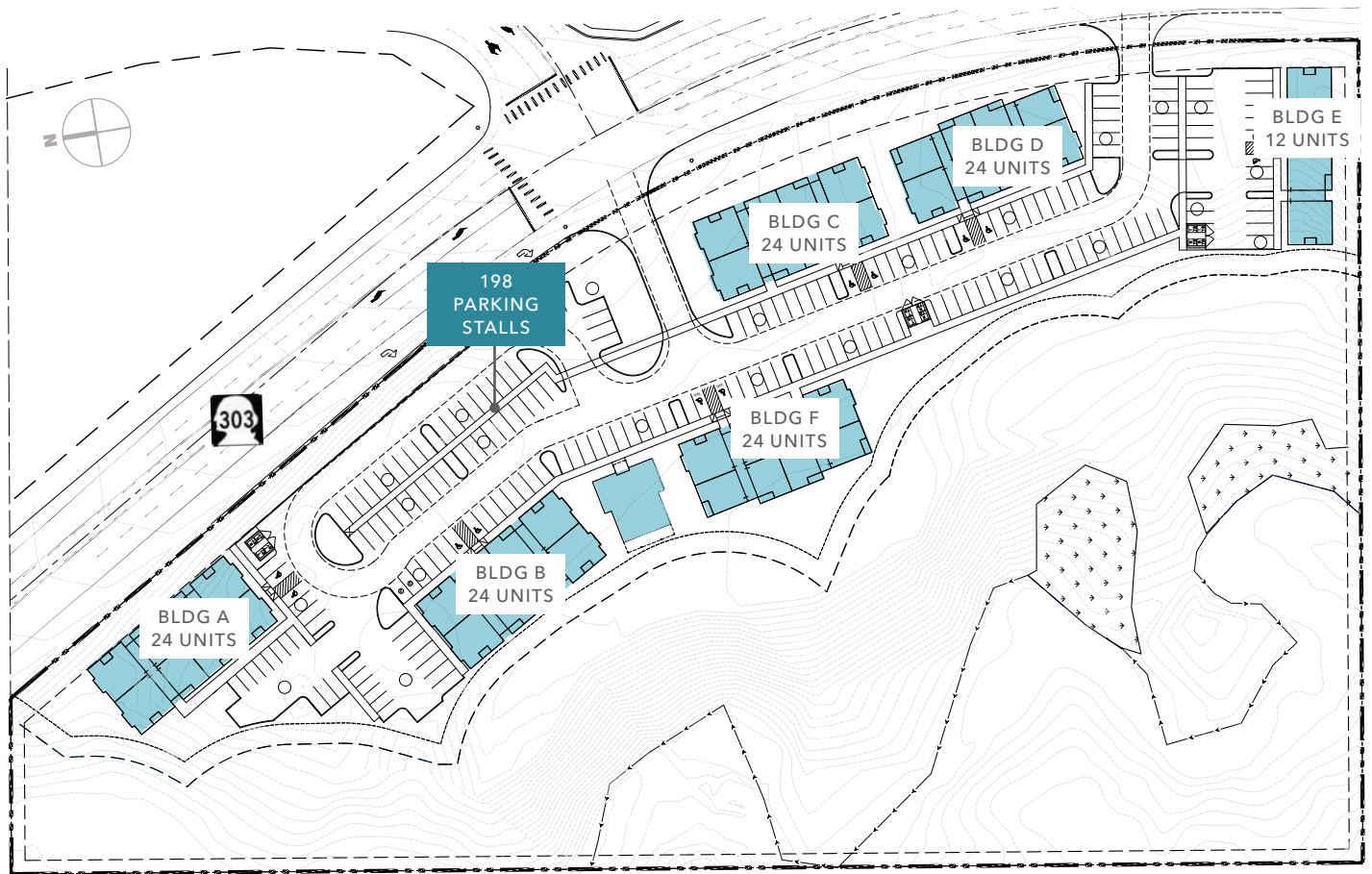
This information supplied herein is from sources we deem reliable. It is provided without any representation, warranty, or guarantee, expressed or implied as to its accuracy. Prospective Buyer or Tenant should conduct an independent investigation and verification of all matters deemed to be material, including, but not limited to, statements of income and expenses. Consult your attorney, accountant, or other professional advisor.





UNIT DATA

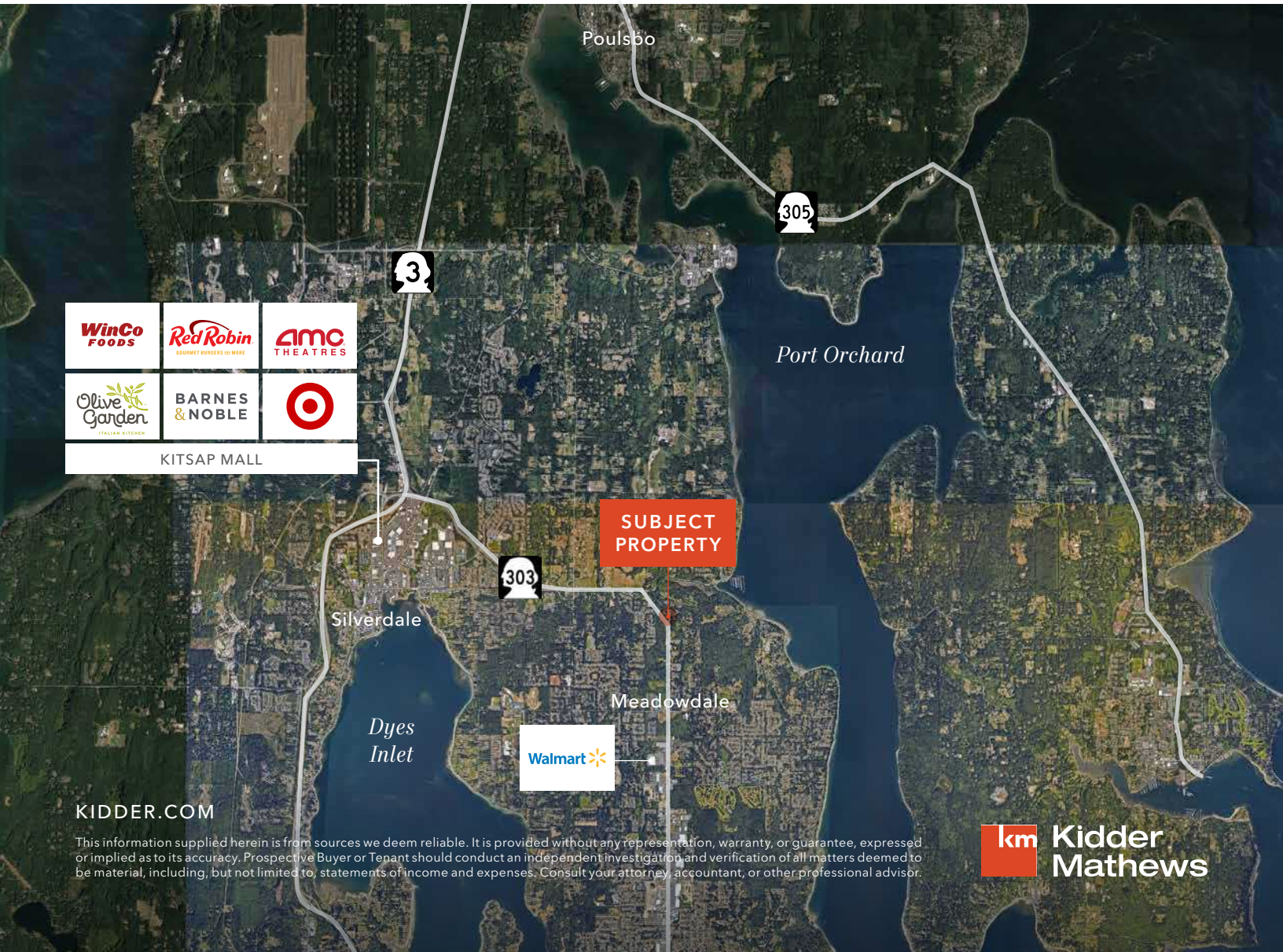
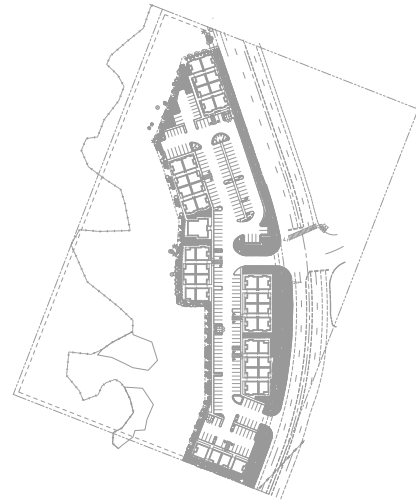
Residential	# of Units	1 BR	2 BR
BUILDING A	24	12	12
BUILDING B	24	12	12
BUILDING C	24	12	12
BUILDING D	24	18	6
BUILDING E	12	6	6
BUILDING F	24	18	6
TOTAL	132	78	54



FOR SALE

DEMOGRAPHICS

2024	1 Mile	3 Miles	5 Miles
EST. POPULATION 2023	4,955	43,856	100,232
PROJECTED 2028	4,877	45,547	102,558
AVERAGE HH INCOME	\$135,001	\$129,810	\$139,485
TOTAL HH	1,883	16,873	38,781
TOTAL BUSINESSES	91	1,387	3,206
TOTAL EMPLOYEES	571	10,419	27,931



KIDDER.COM

This information supplied herein is from sources we deem reliable. It is provided without any representation, warranty, or guarantee, expressed or implied as to its accuracy. Prospective Buyer or Tenant should conduct an independent investigation and verification of all matters deemed to be material, including, but not limited to, statements of income and expenses. Consult your attorney, accountant, or other professional advisor.

