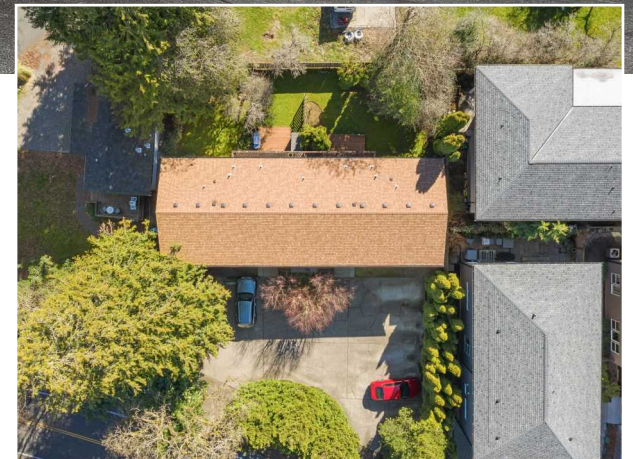
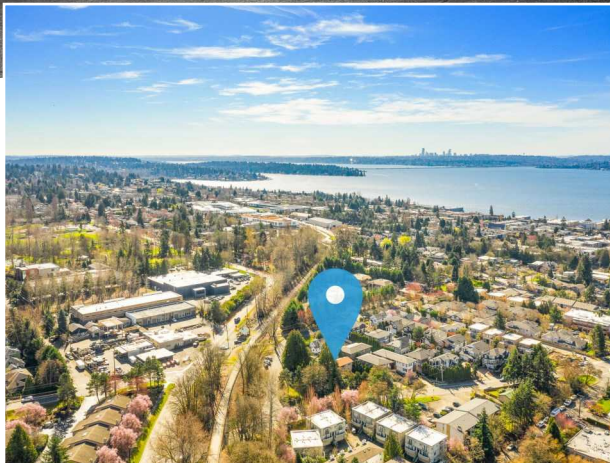
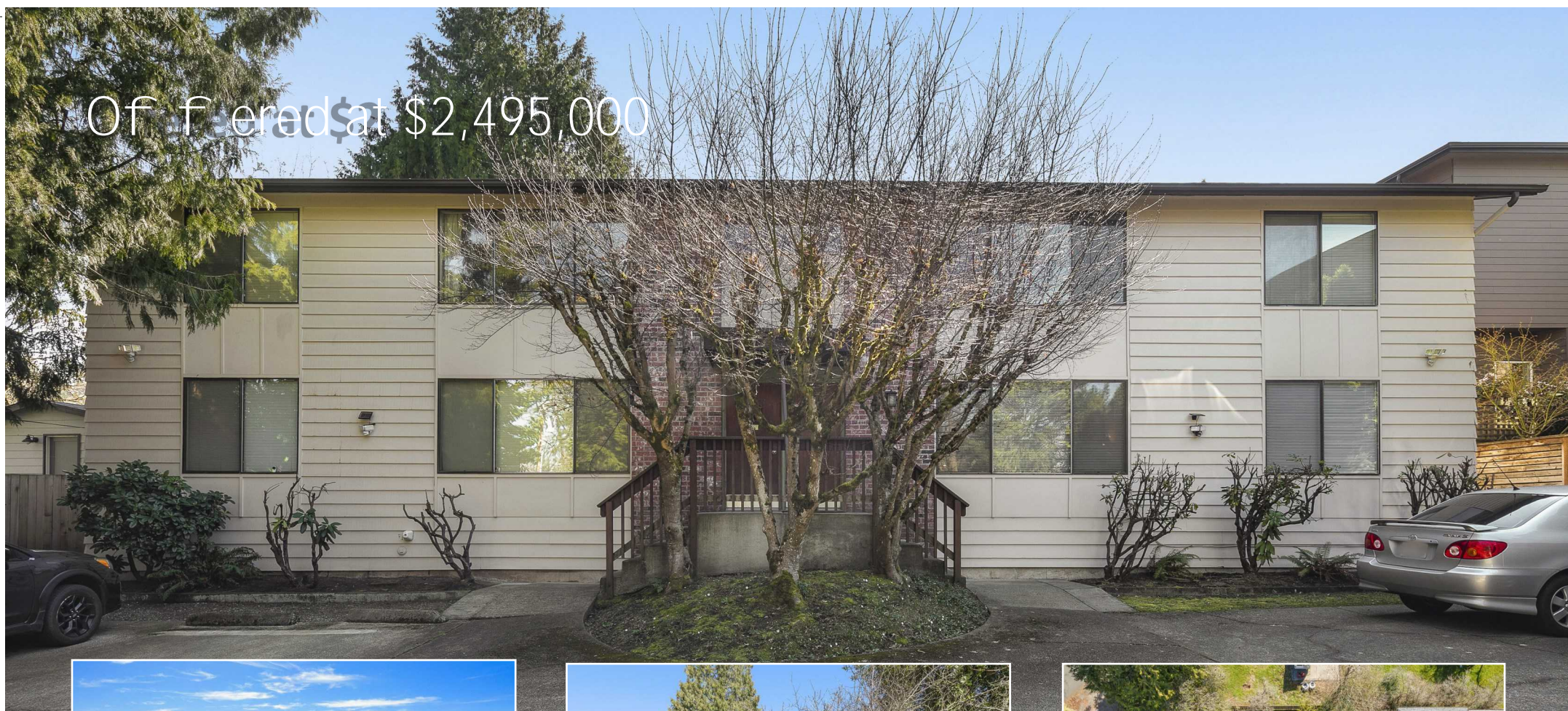


Offered at \$2,495,000

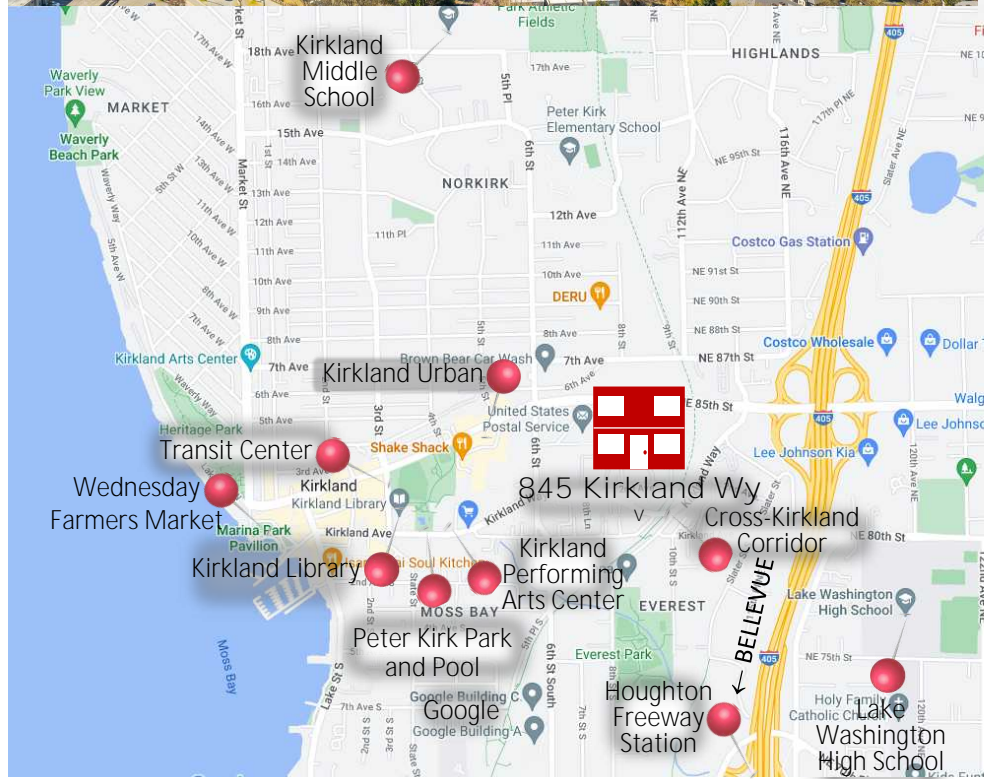
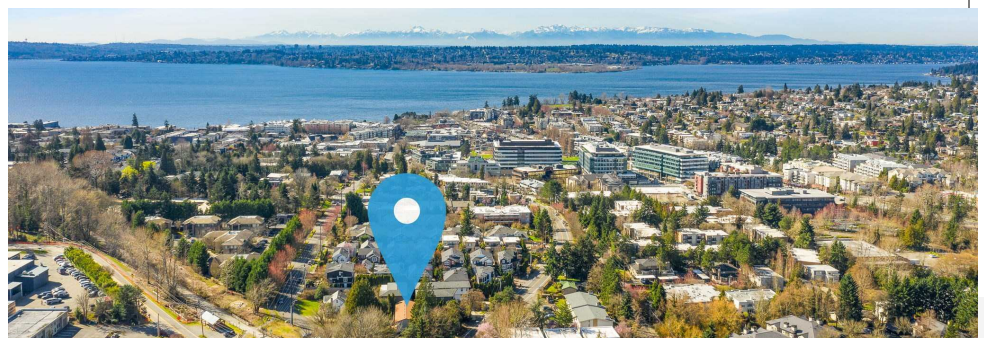


# DOWNTOWN KIRKLAND INCOME PROPERTY

845 KIRKLAND WAY, KIRKLAND | MLS#2212126

[NunesGroupRealEstate.com](http://NunesGroupRealEstate.com)





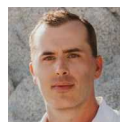
### 845 Kirkland Way

This premier investment property with desirable Moss Bay location and stable rental income has been meticulously maintained and updated over the years. It is currently an income producing 4-plex of 2 bedroom units with stable tenants. The property's exceptional location, blocks to Google, Interstate 405, Kirkland Urban and downtown, and mere steps to the Cross-Kirkland trail, along with the lot size and zoning provide many future redevelopment opportunities ranging from multiple townhomes, condos, ADU/house combinations, or co-living homes. Seller has obtained professionally drafted architectural feasibility studies that outline future value-enhancing redevelopment possibilities.


Information deemed reliable but cannot be guaranteed.





Brenda Nunes, Real Estate Managing Broker  
 425-785-6286  
 Brenda@NunesGroupRealEstate.com





Danny Nunes, Real Estate Managing Broker  
 425-785-6750  
 Danny@NunesGroupRealEstate.com





  
 0.4 mi


  
 3.3 mi


  
 0.4 mi

  
 0.6 mi

  
 0.4 mi

  
 1.2 mi

  
 0.5 mi

  
 0.6 mi