



1114 1ST AVE • SEATTLE, WA 98101

POST ALLEY OFFICE FOR SALE

OFFICE CONDO \$2,350,000

CBRE

PROPERTY OVERVIEW

PROPERTY DESCRIPTION

CBRE is pleased to present the exclusive opportunity to purchase 1114 1st Ave, a 5,178 SF office condo ideally located in Seattle's Central Business district. With direct access via Post Alley, this luxury office property offers users and investors a high image location.

HIGHLIGHTS

- Direct Access to Post Alley
- Brick and Beam Interior
- Large Conference Room
- Showers in-suite
- Substantial local amenities

Sale Price: \$2,350,000 (\$453 PSF)

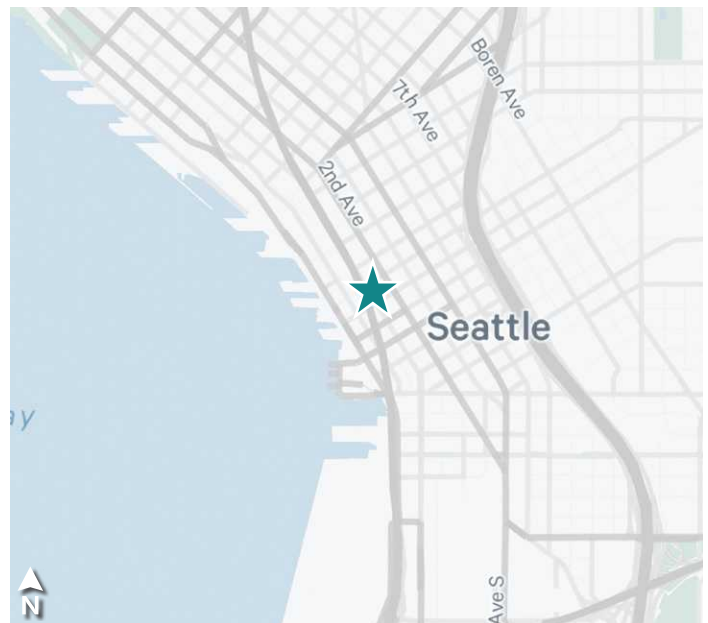
Address: 1114 1st Ave
Seattle, WA 98101

Condo SF: 5,178

Year Built: 1902

Parking: Parking available for lease in attached garage

Use: Office



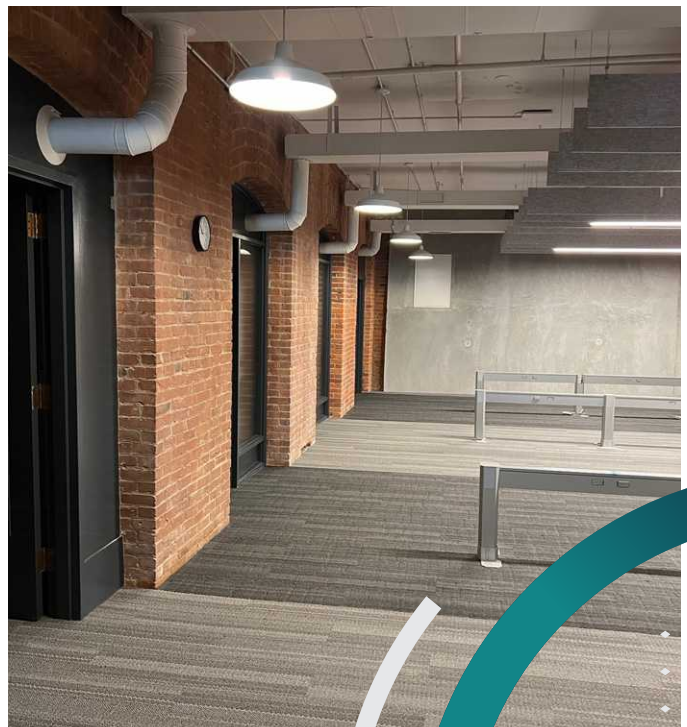
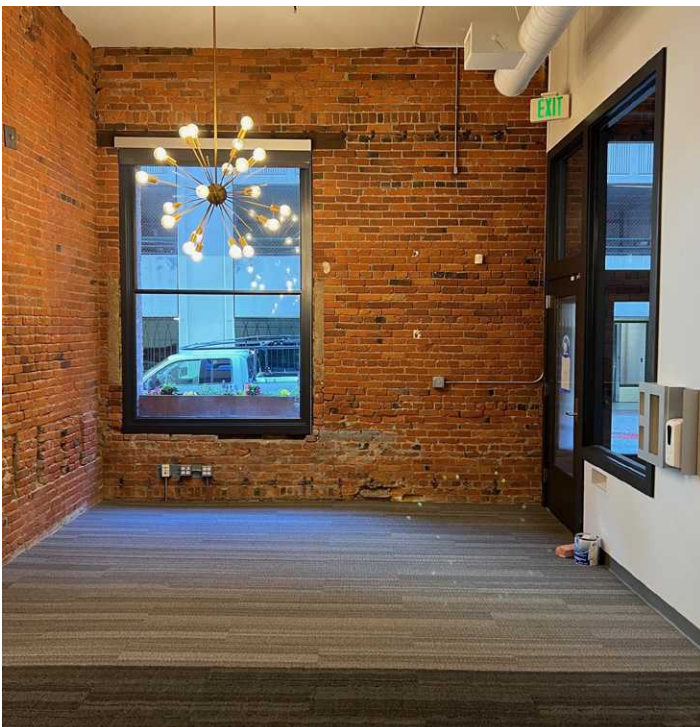
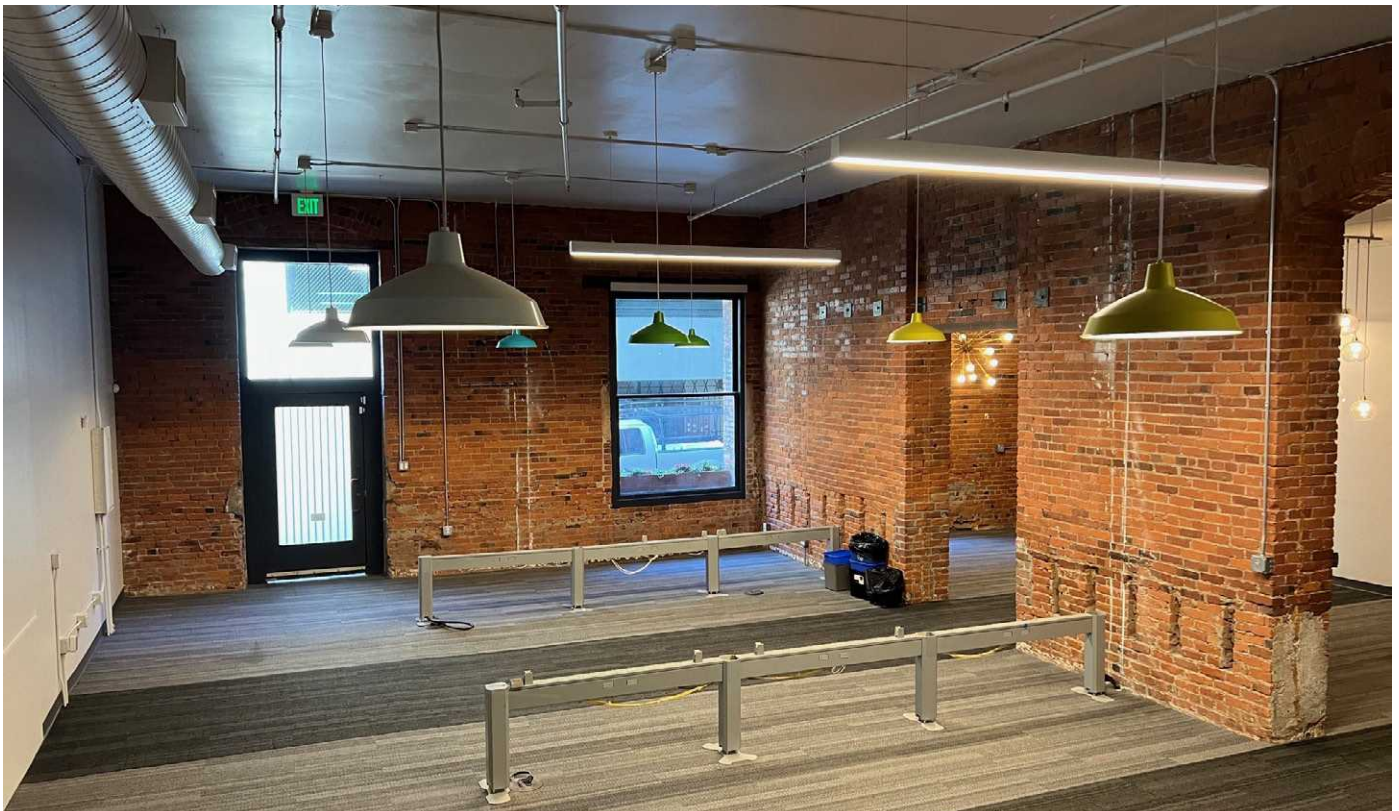
2023 DEMOGRAPHICS	1 MILE	3 MILES	5 MILES
BUSINESSES	9,131	17,747	27,953
EMPLOYEES	191,730	313,883	451,795
POPULATION	70,316	244,417	491,045
HOUSEHOLDS	43,656	136,502	243,185
AVERAGE HOUSEHOLD INCOME	\$152,590	\$171,438	\$173,522
DAYTIME POPULATION	242,403	455,954	732,019

Source: CBRE Fast Report/Esri 2024

MARKET OVERVIEW

POST ALLEY OVERVIEW

Post Alley is a historic passageway located in Seattle, that runs through the heart of Pike Place Market, one of Seattle's most iconic landmarks. Post Alley is known for its unique atmosphere, lined with shops, cafes and restaurants, offering a diverse range of foods and crafts. The alley is also famous for the Gum Wall, a quirky attraction where visitors stick their used chewing gum to the walls, creating a colorful and somewhat gross spectacle. Post Alley is a bustling and vibrant part of Seattle's urban landscape, drawing locals and tourists alike to explore its electric offerings and soak up its lively ambiance.



FOR SALE

OFFICE CONDO FOR SALE

1114 1ST AVE • SEATTLE, WA 98101

CONTACT US

RYAN BRUNETTE

Associate

+1 206 292 6099

ryan.brunette@cbre.com

STEVE BRUNETTE

Senior Vice President

+1 206 292 6007

steve.brunette@cbre.com

CBRE, INC.

1420 5th Avenue

Suite 3800

Seattle, WA 98101

CBRE