

For Sale

Office/Multifamily

NAI Black



Please do not disturb the existing business and occupants. Contact the Listing Brokers for a Tour.

119 S Howard St

Spokane, Washington 99201

Property Description

Building Size: 51,106± SF

- 4 Floors, 10,775± SF per
- 1 Floor Daylight basement, 8,006± SF
- 2 Freight Elevators
- Exposed & Preserved Brick & Beam
- Historic Building, Built in 1910

Power: 600A, 3-Phase

Lot Size: 16,827± SF

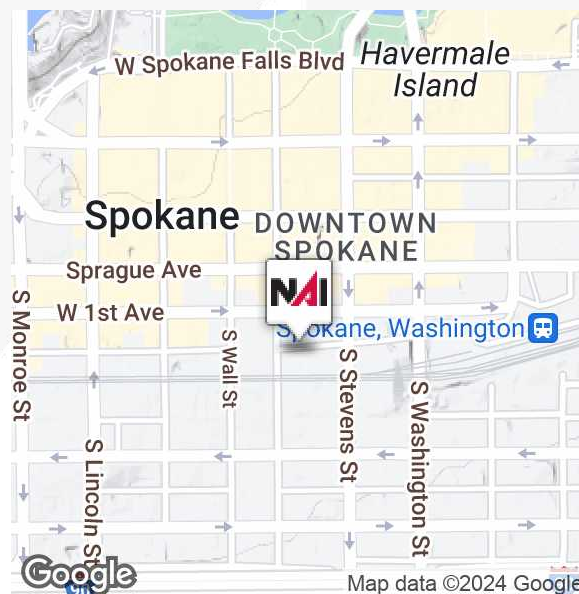
Parking: 13 Striped (incl. ADA)

Freight: 1 Dock-High w/ 3-Truck Delivery Parks

Zoning: Downtown Core (DTC)

Parcel Number: 35191.5521

**Sale Price: ~~\$3,300,000~~
\$3,150,000**



For more information

Mark C. McLees

O: 509 622 3554

mclees@naiblack.com

Mitch Swenson, CCIM

O: 509 622 3552

mswenson@naiblack.com

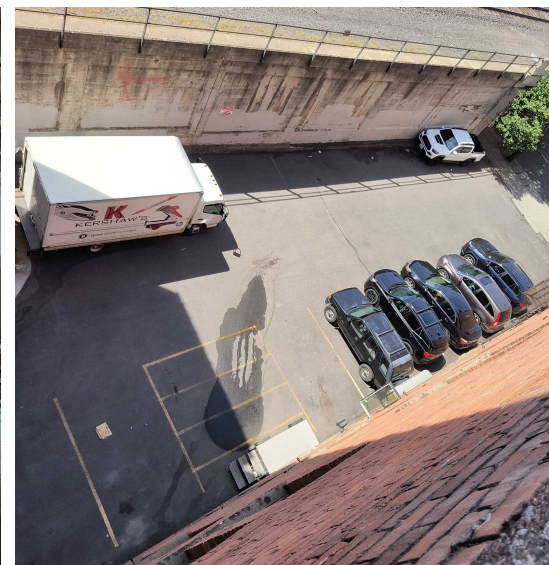
No warranty or representation, expression or implied, is made as to the accuracy of the information contained herein, and the same is submitted subject to errors, omissions, change or price, rental or other conditions, prior to sale, lease, financing, or withdrawal without notice, and of special listing conditions imposed by our principals no warranties or representations are made as to the condition of the property or any hazards contained therein or any to be implied.

801 W. Riverside Avenue, Suite 300
Spokane, WA 99201
509 623 1000 tel
naiblack.com

For Sale
Office/Multifamily



NAI Black



No warranty or representation, expression or implied, is made as to the accuracy of the information contained herein, and the same is submitted subject to errors, omissions, change or price, rental or other conditions, prior to sale, lease, financing, or withdrawal without notice, and of special listing conditions imposed by our principals no warranties or representations are made as to the condition of the property or any hazards contained therein or any to be implied.

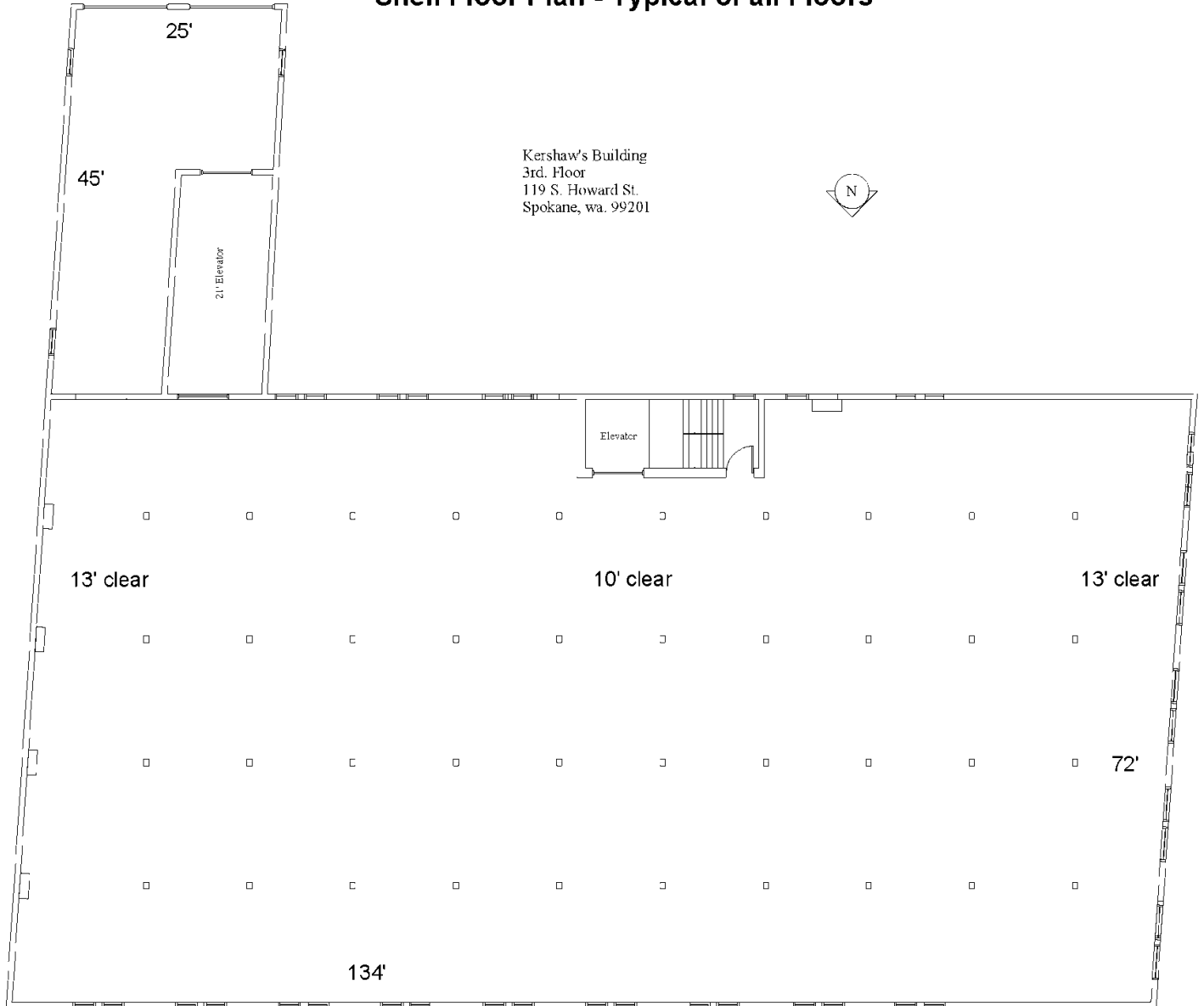
801 W. Riverside Avenue, Suite 300
Spokane, WA 99201
509 623 1000 tel
naiblack.com

For Sale

Office/Multifamily



Shell Floor Plan - Typical of all Floors



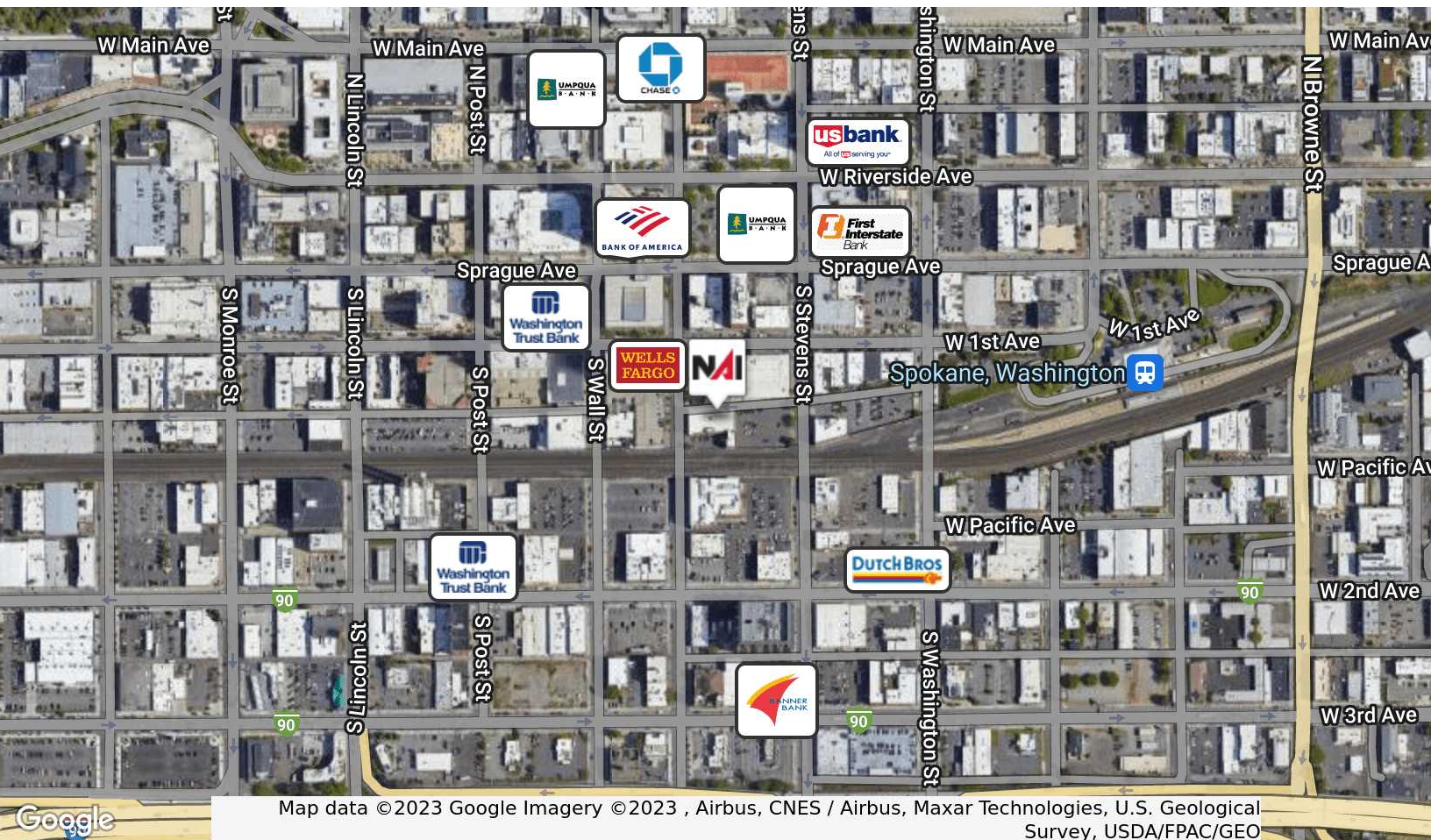
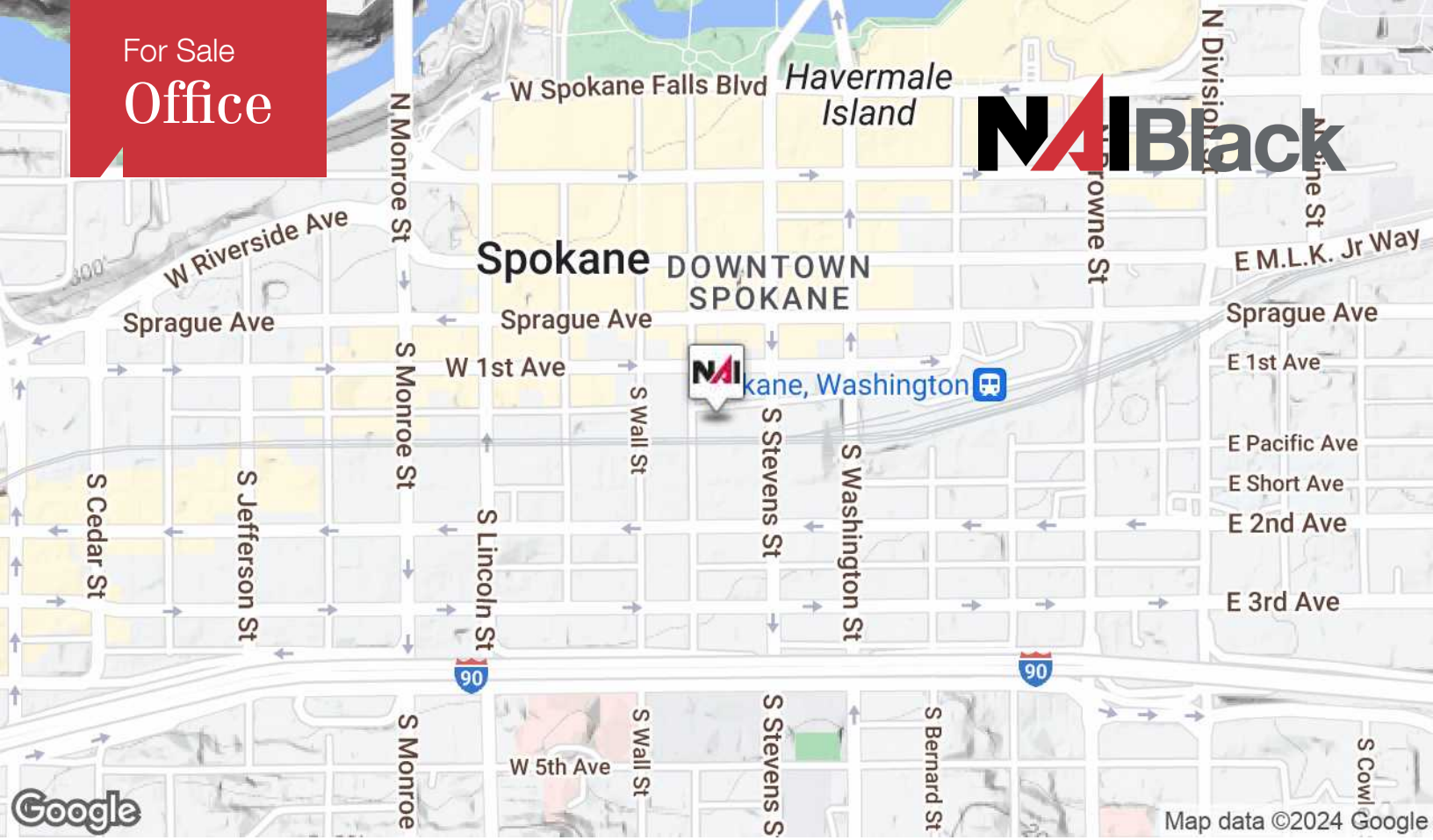
All measurements are estimates. Buyer to conduct its own survey of the property to confirm.

No warranty or representation, expression or implied, is made as to the accuracy of the information contained herein, and the same is submitted subject to errors, omissions, change or price, rental or other conditions, prior to sale, lease, financing, or withdrawal without notice, and of special listing conditions imposed by our principals no warranties or representations are made as to the condition of the property or any hazards contained therein or any to be implied.

801 W. Riverside Avenue, Suite 300
Spokane, WA 99201
509 623 1000 tel
naiblack.com

For Sale
Office

NAI Black



Map data © 2023 Google Imagery © 2023 , Airbus, CNES / Airbus, Maxar Technologies, U.S. Geological Survey, USDA/FPAC/GEO

No warranty or representation, expression or implied, is made as to the accuracy of the information contained herein, and the same is submitted subject to errors, omissions, change or price, rental or other conditions, prior to sale, lease, financing, or withdrawal without notice, and of special listing conditions imposed by our principals no warranties or representations are made as to the condition of the property or any hazards contained therein or any to be implied.

801 W. Riverside Avenue, Suite 300
Spokane, WA 99201
509 623 1000 tel
naiblack.com