

for sale/lease

FIX/MADORE

ASHLEY HAYES

 urbanAsh
pointe 3 REAL ESTATE

BLAKE TAYLOR

WCCR

West Coast Commercial Realty

knkX n p r

steps away

TO SEATTLE'S NEW WATERFRONT



PIKE PLACE

OVERLOOK WALK
OPEN SUMMER 24

6 PARKING SPACES

1512 ALASKAN WAY

SEATTLE AQUARIUM
OCEAN PAVILION
OPEN SUMMER 24

PIKE STREET
HILL CLIMB

Fix Madore Building
1501 Western Avenue,
Seattle, WA 98101

SPACE SUMMARY

mail: 1512 Alaskan Way

legal: 1507 Western Ave
#C010

parcel #: 257028-0010

zoning: Pike Market
Mixed (PMM)

size: 2,010 SF

hoa: \$1,577.56

insurance: \$42.33

taxes: \$200.79

mid: \$26.68

POTENTIAL SELLER FINANCING AVAILABLE



2,010 SF
**commercial &
condo**

+6 parking stalls





a front seat TO EVERYTHING

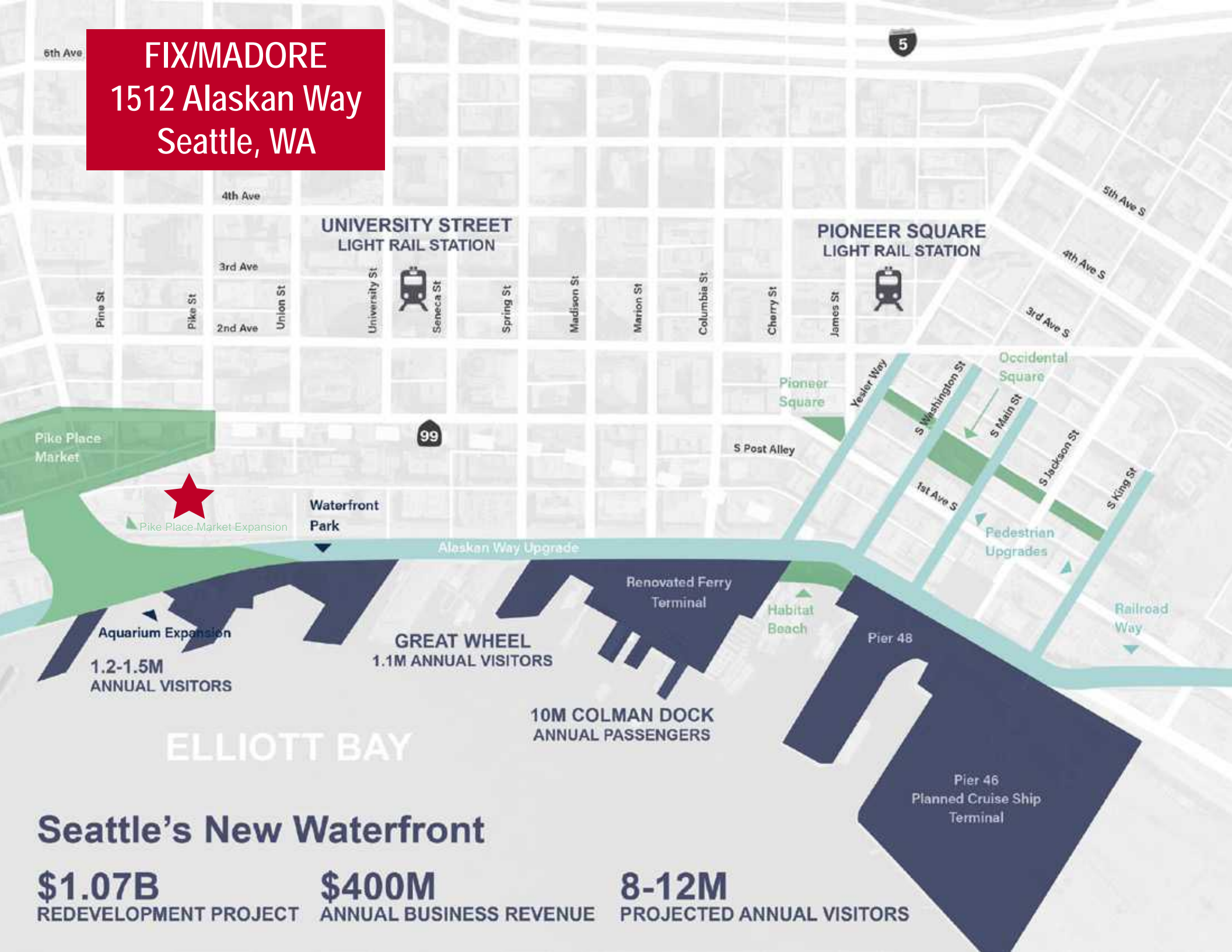


PIKE ST. COFFEE

minutes to walk:

Pike Place Market	1
Seattle Aquarium	1
Waterfront Park Promenade.....	1
Post Alley	3
Downtown Core	4
Great Wheel.....	4
Coleman Dock Ferry Terminal	13

FIX/MADORE
1512 Alaskan Way
Seattle, WA



Seattle's New Waterfront

\$1.07B
REDEVELOPMENT PROJECT

\$400M
ANNUAL BUSINESS REVENUE

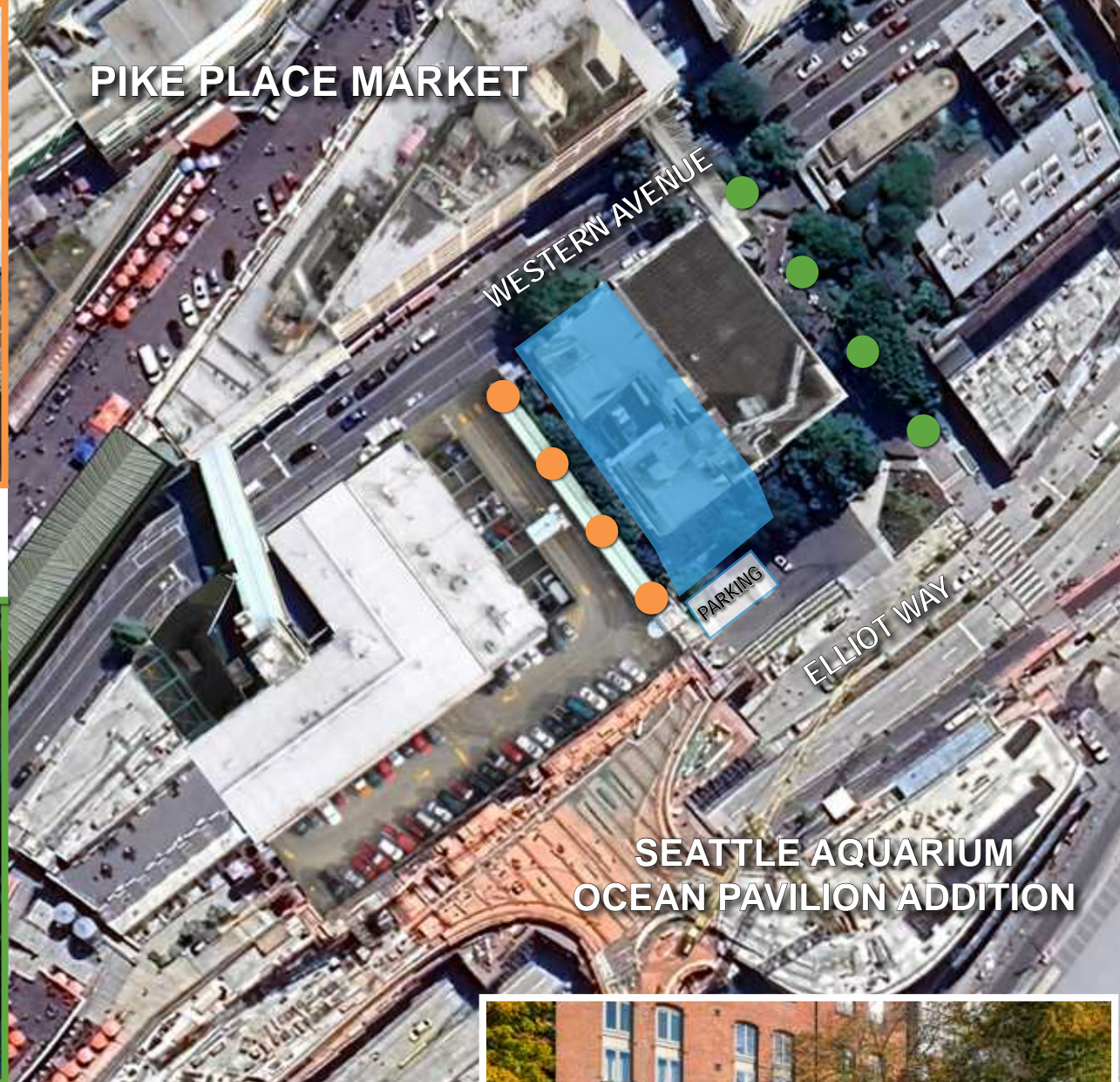
8-12M
PROJECTED ANNUAL VISITORS



Pike Place Market public elevator provides quick access from Western Avenue down to the entry of 1512 Alaskan way and the attached parking garage



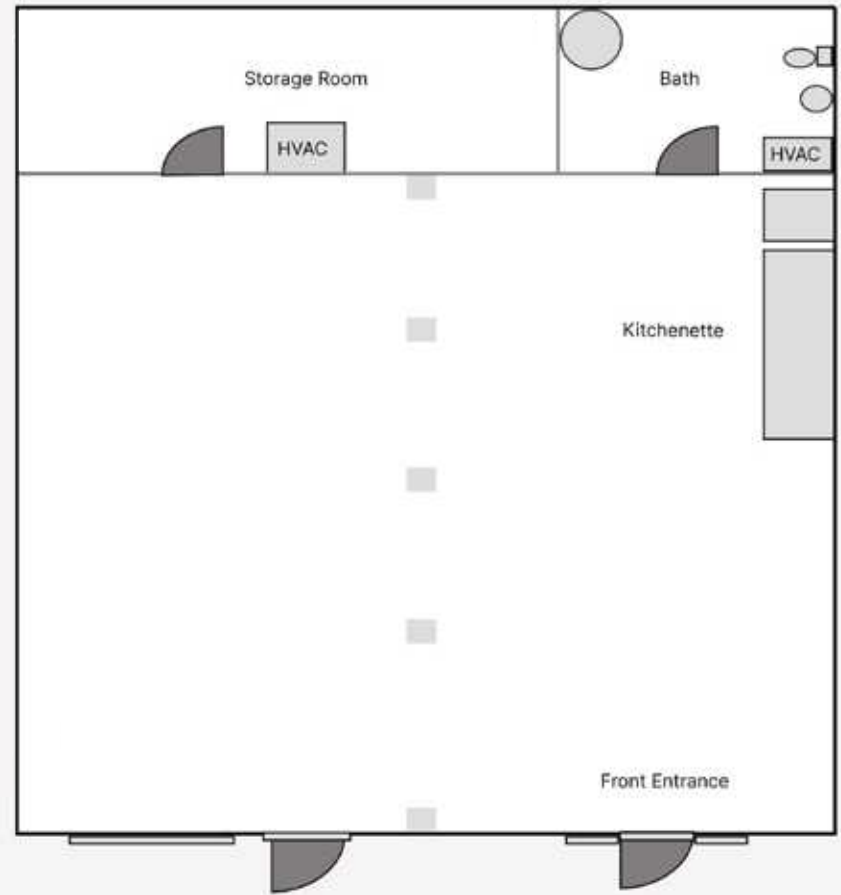
Pike Street Hillclimb attracts tourists and locals to shop and dine as they walk from Seattle's historic waterfront to the Pike Street Market



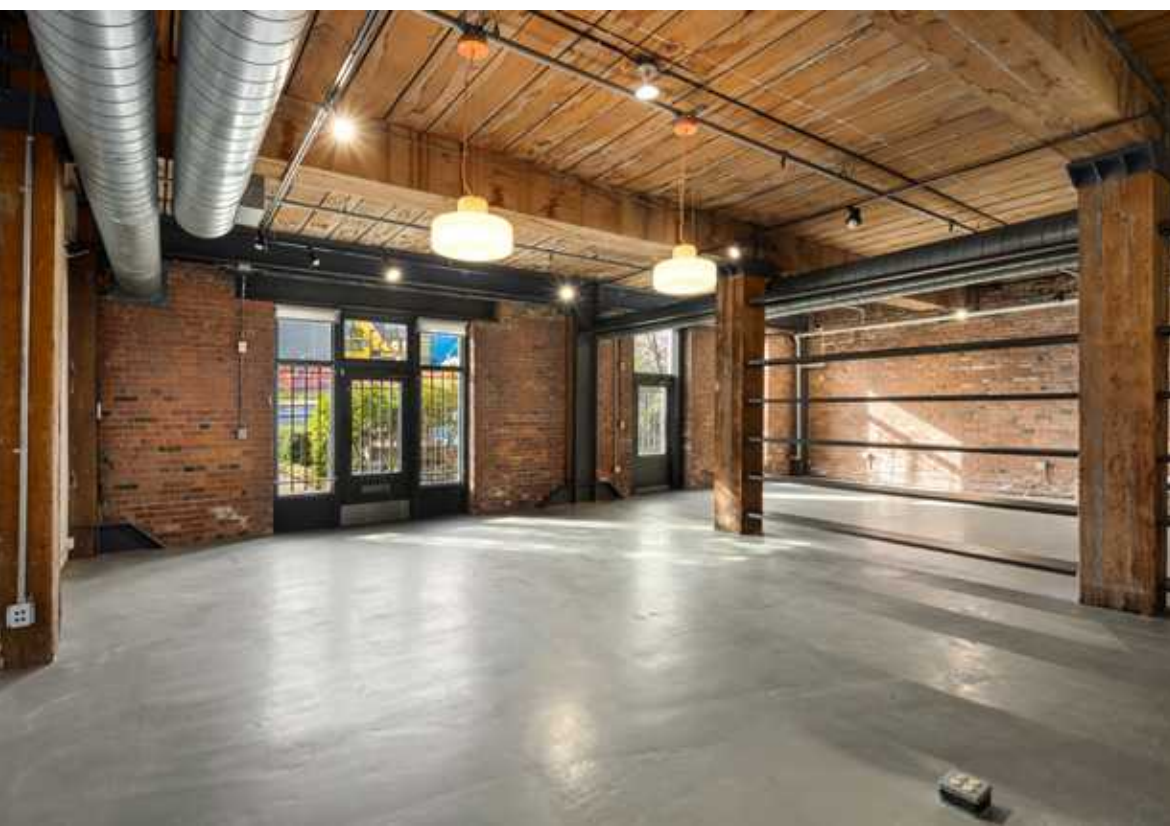
accessibility



6 tandem parking stalls directly in front



one-of-a kind
2,010 square feet





PIKE PLACE

OVERLOOK WALK
OPEN SUMMER 24

PIKE STREET
HILL CLIMB

PIER 62

1512 ALASKAN WAY

SEATTLE AQUARIUM
OCEAN PAVILION
OPEN SUMMER 24



FIX/MADORE

ASHLEY HAYES

 **urbanAsh**
pointe 3 REAL ESTATE

BLAKE TAYLOR

WCCR

West Coast Commercial Realty