

FOR SALE OR LEASE

Office/Retail/Industrial
Flex building.

115 E Willis Street

Kent, WA

*Kent building ideal for showroom with offices
or industrial/flex uses.*

PROPERTY HIGHLIGHTS

- + Approximately 7,080 SF (50% warehouse/flex, 50% office)
- + Ceiling height on main floor area ranges from 15.5 to 22 feet
- + 3 grade level roll up doors
- + Separate entrances and exits for upstairs offices
- + Fenced parking lot with 10 parking stalls
- + Available immediately

BILL POLL, CCIM
Partner
+1 425 586 5604
bpoll@nai-ppsp.com

DEAN ALTARAS, CCIM
Partner
+1 425 586 5613
daltaras@nai-ppsp.com

MATT LE
Associate
+1 425 586 5647
mle@nai-ppsp.com

NAI Puget Sound
Properties

THE INFORMATION CONTAINED HEREIN HAS BEEN GIVEN TO US BY THE OWNER OF THE PROPERTY OR OTHER SOURCES WE DEEM RELIABLE, WE HAVE NO REASON TO DOUBT ITS ACCURACY, BUT WE DO NOT GUARANTEE IT. ALL INFORMATION SHOULD BE VERIFIED PRIOR TO PURCHASE OR LEASE.

SALE PRICE

\$2,100,000

LEASE RATE

\$15.00 PSF

2023 NNN

\$4.48

APPROX. SF

7,080 SF

ZONING

GC

nai-ppsp.com

Floor Plan



115 E Willis <https://m2lk.net/v/d93f7661> - Powered by Measure Square.

BILLY POLL, CCIM
 Partner
 +1 425 586 5604
 bpoll@nai-psp.com

DEAN ALTARAS, CCIM
 Partner
 +1 425 586 5613
 dalтарас@nai-psp.com

MATT LE
 Associate
 +1 425 586 5647
 mle@nai-psp.com





Variety of potential uses with both office and warehouse space.

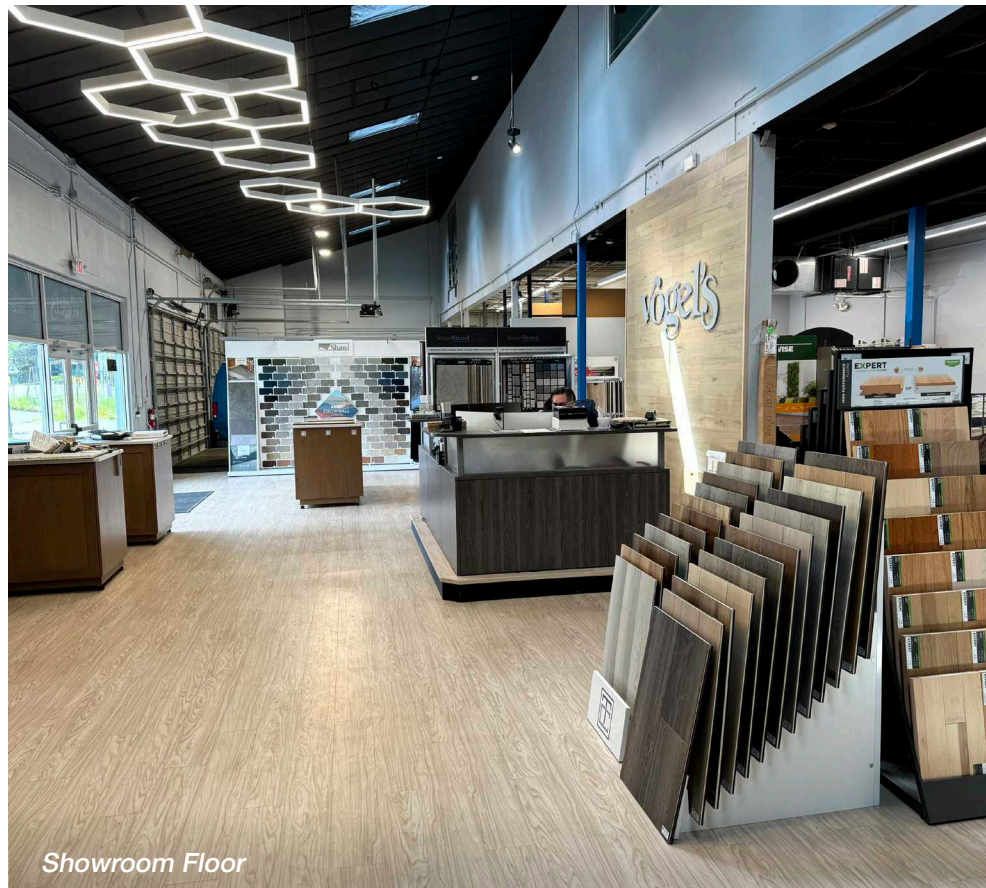
Office Kitchen



Showroom Lobby



Private Office Space



Showroom Floor

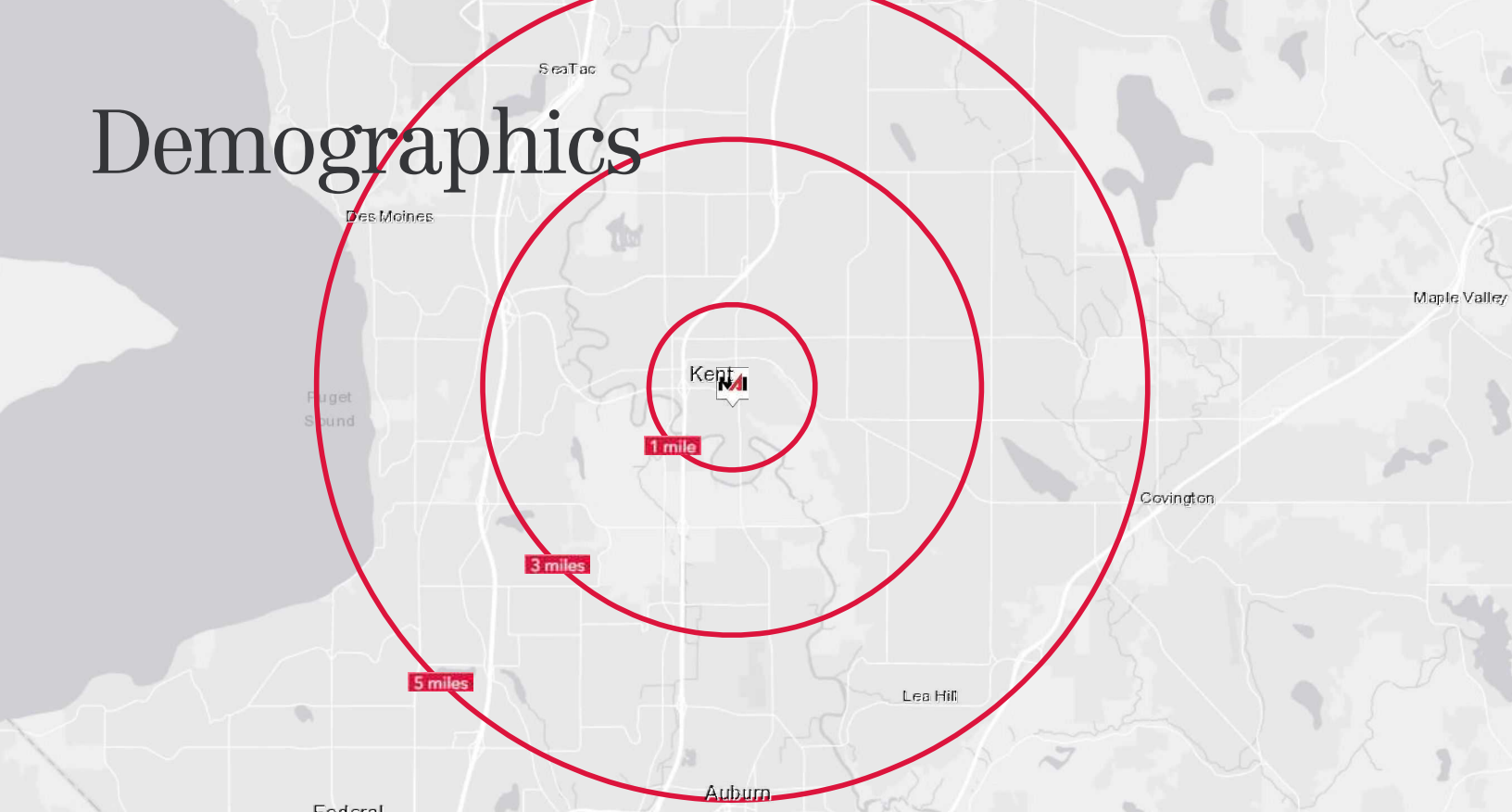
BILLY POLL, CCIM
Partner
+1 425 586 5604
bpoll@nai-psp.com

DEAN ALTARAS, CCIM
Partner
+1 425 586 5613
daltaras@nai-psp.com

MATT LE
Associate
+1 425 586 5647
mle@nai-psp.com



Demographics



115 EAST WILLIS STREET

	1 MILE	3 MILES	5 MILES
Population	15,748	98,727	274,650
2028 Population	16,768	107,183	288,962
Daytime Population	10,252	48,039	112,850
Households	6,431	34,743	96,015
Median Age	35.0	35.3	36.5
Median HH Income	\$55,100	\$79,264	\$85,270

88

WALK SCORE

72

BIKE SCORE

49

TRANSIT SCORE

BILLY POLL, CCIM
Partner
+1 425 586 5604
bpoll@nai-psp.com

DEAN ALTARAS, CCIM
Partner
+1 425 586 5613
daltaras@nai-psp.com

MATT LE
Associate
+1 425 586 5647
mle@nai-psp.com

