

SPRING PEAK AT TALUS

*2,182 SF Live/Work-Style Condo
For Sale in Beautiful Issaquah, WA*

2067 NW TALUS DR, ISSAQUAH, WA 98027



*Rare live/work-style condo,
surrounded by protected forestland
and hiking trails, with easy access
to freeways and amenities.*

2,182 total unit SF

Three stories with 4 car garage on ground level

Retail/office on the second floor

Live/work space on the third floor

Built in 2017

\$1,375,000 list price

16 MIN
DRIVE TO BELLEVUE

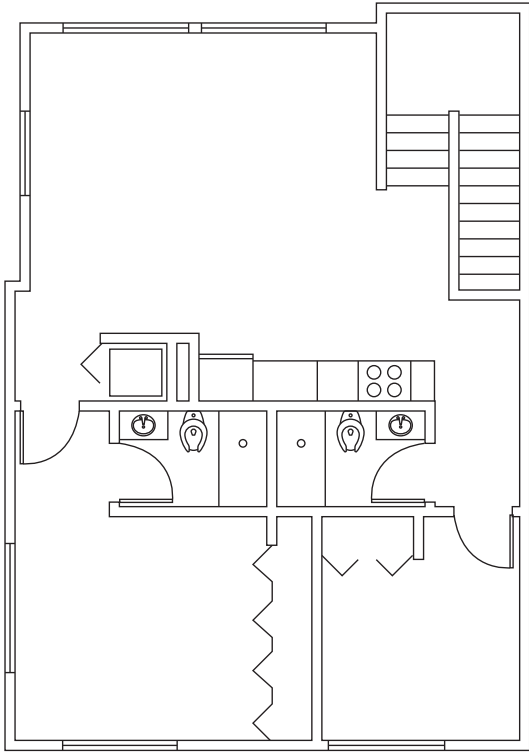
20 MIN
DRIVE TO SEATTLE



FLOOR PLAN

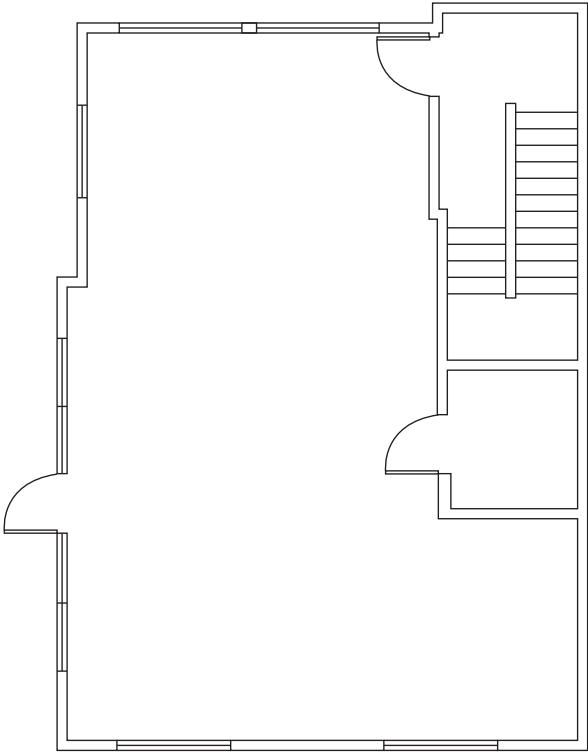
SECOND FLOOR

Live/Work Space



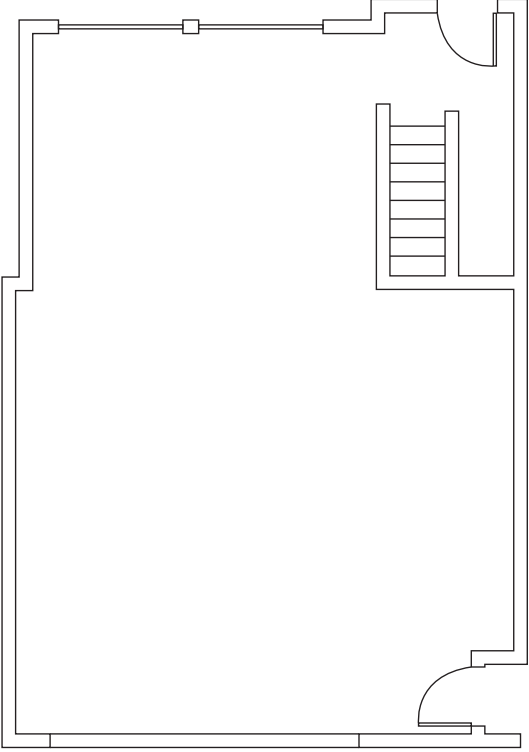
FIRST FLOOR

Retail/Work Space



GROUND LEVEL

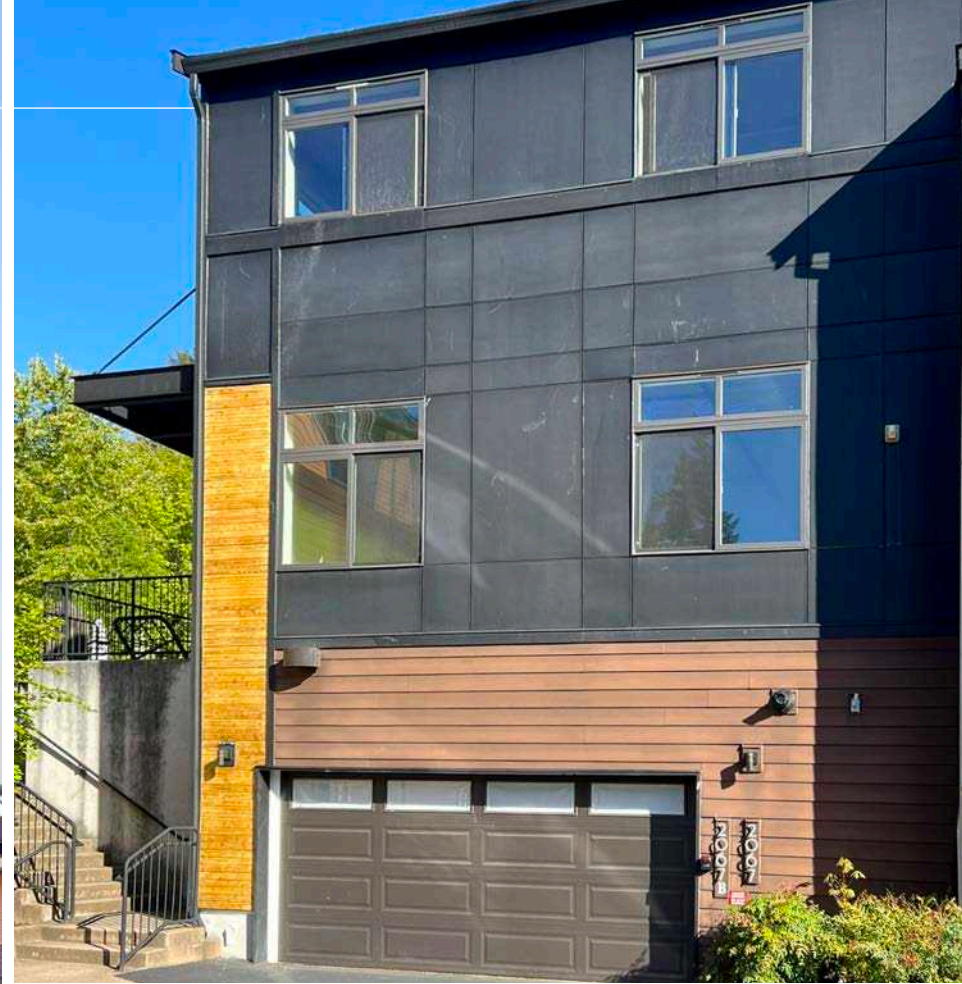
Garage



SPRING PEAK AT TALUS

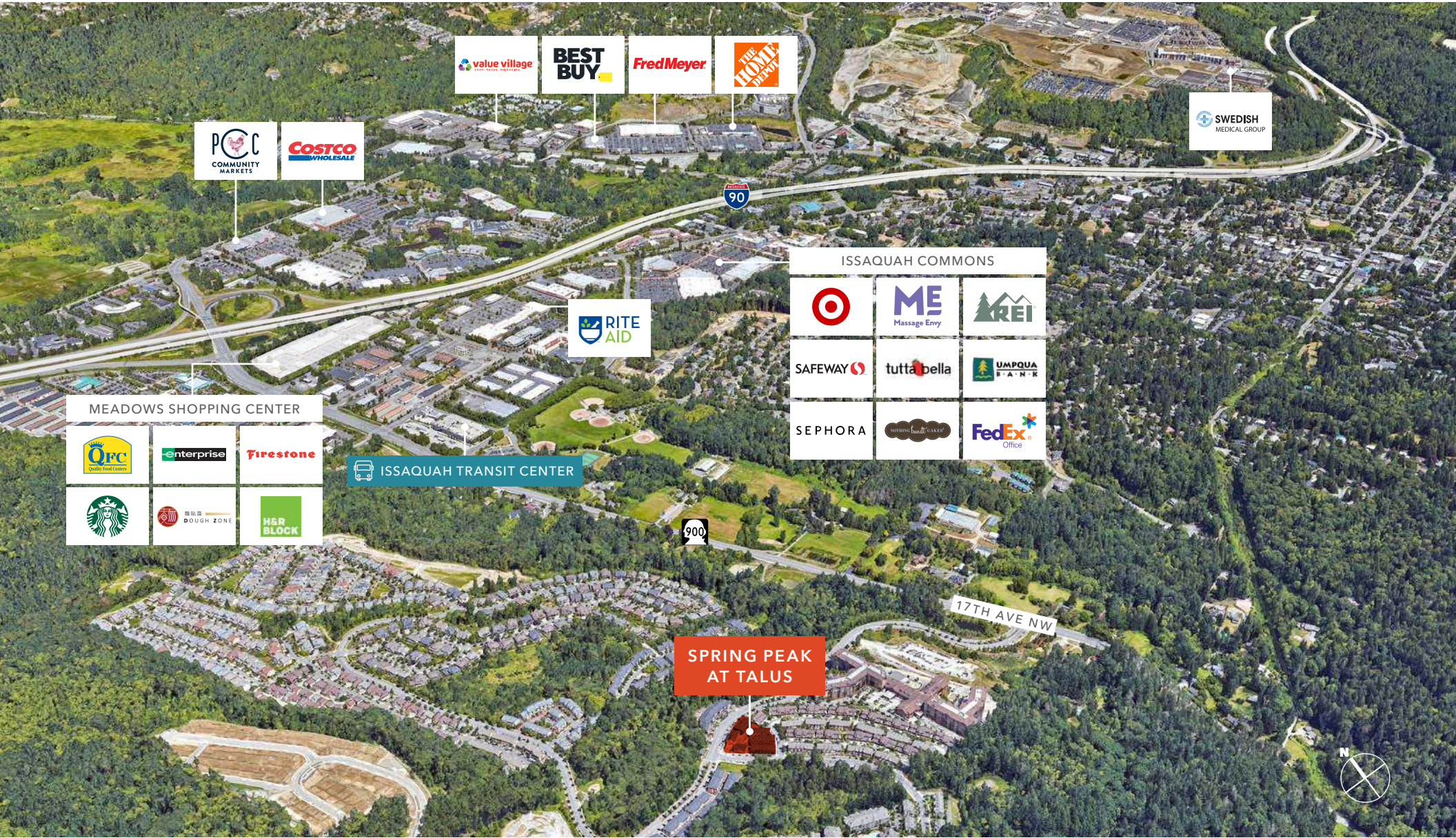


AVAILABLE FOR SALE



KIDDER MATHEWS

SPRING PEAK AT TALUS





SPRING PEAK AT TALUS

*For more information on
this property, please contact*

AARON KRAFT
425.450.1105
aaron.kraft@kidder.com

KIDDER.COM

This information supplied herein is from sources we deem reliable. It is provided without any representation, warranty, or guarantee, expressed or implied as to its accuracy. Prospective Buyer or Tenant should conduct an independent investigation and verification of all matters deemed to be material, including, but not limited to, statements of income and expenses. Consult your attorney, accountant, or other professional advisor.

