



MEDICAL OFFICE FOR SALE/LEASE

17722 TALBOT RD S RENTON

17722-17726 TALBOT RD S, RENTON WA

CBRE

PROPERTY OVERVIEW

DESCRIPTION

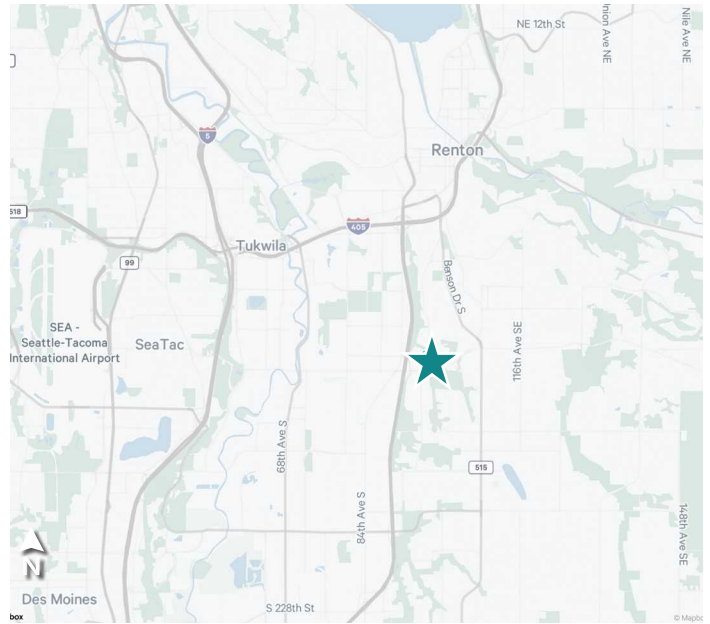
17722 is a 6,901 SF Medical Office for sale/ lease in Renton. Located directly adjacent to Valley Medical Center, the building presents a prime opportunity for a user to purchase or lease a building with direct access to a host of hospital related amenities.

Valley Medical Center, located in Renton, Washington, is the largest nonprofit healthcare provider between Seattle and Tacoma. Serving the community since 1947, it operates as part of the UW Medicine system, which enhances its offerings with strong research and teaching collaborations. Valley Medical Center includes a hospital with various specialties, including emergency care, childbirth services, heart and vascular care, and orthopedics. It also runs a network of primary and urgent care clinics throughout the region, aiming to provide comprehensive and accessible healthcare services to its community.

HIGHLIGHTS

- **Adjacent to UW Medicine's Valley Medical Center**
- **Heavy Medical Buildout- space is move in ready for a variety of medical users**
- **34 Parking Stalls**
- **Easy Access to Seattle via I-5**

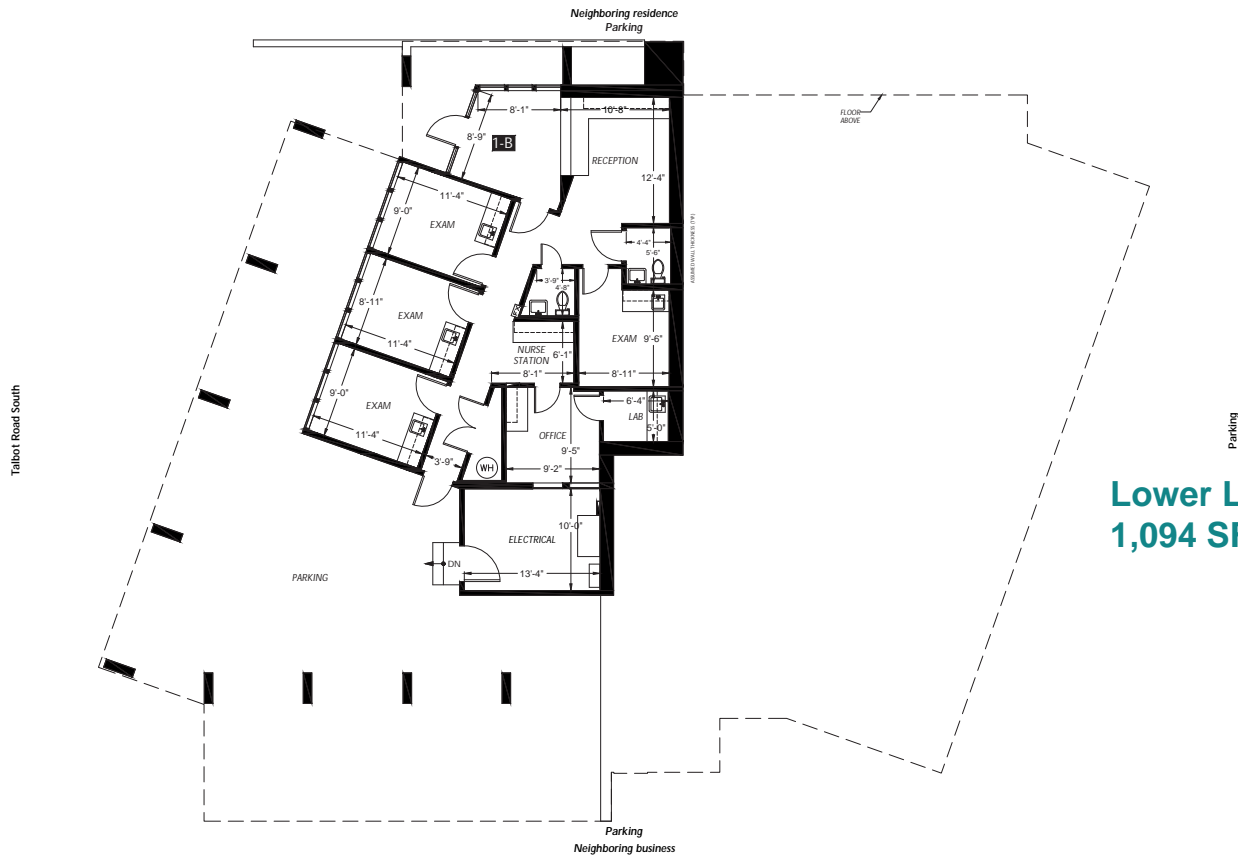
Sale Price: \$2,550,000
Lease Rate: \$30.00 PSF NNN
Address: 17722-17726 Talbot Rd S
 Renton WA 98055
Building SF: 6,901
Lot Size: 0.52 AC
Zoning: CO (Commercial Office)



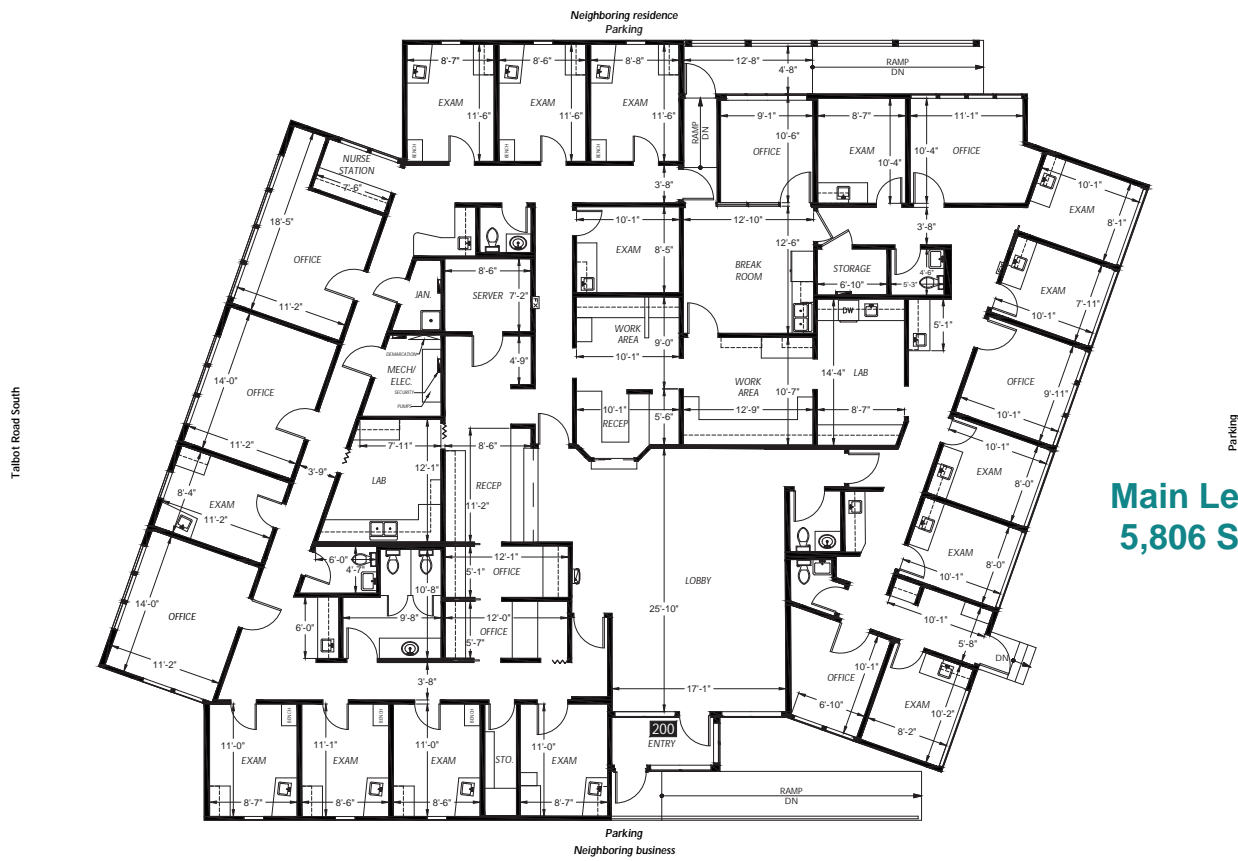
2022 DEMOGRAPHICS	1 MILE	3 MILES	5 MILES
BUSINESSES	724	5,152	9,546
EMPLOYEES	13,486	84,251	158,039
POPULATION	12,588	87,740	295,355
HOUSEHOLDS	4,993	32,988	108,599
AVERAGE HOUSEHOLD INCOME	\$116,908	\$120,300	\$118,037
DAYTIME POPULATION	22,414	134,900	327,395

Source: CBRE Fast Report/Esri 2023

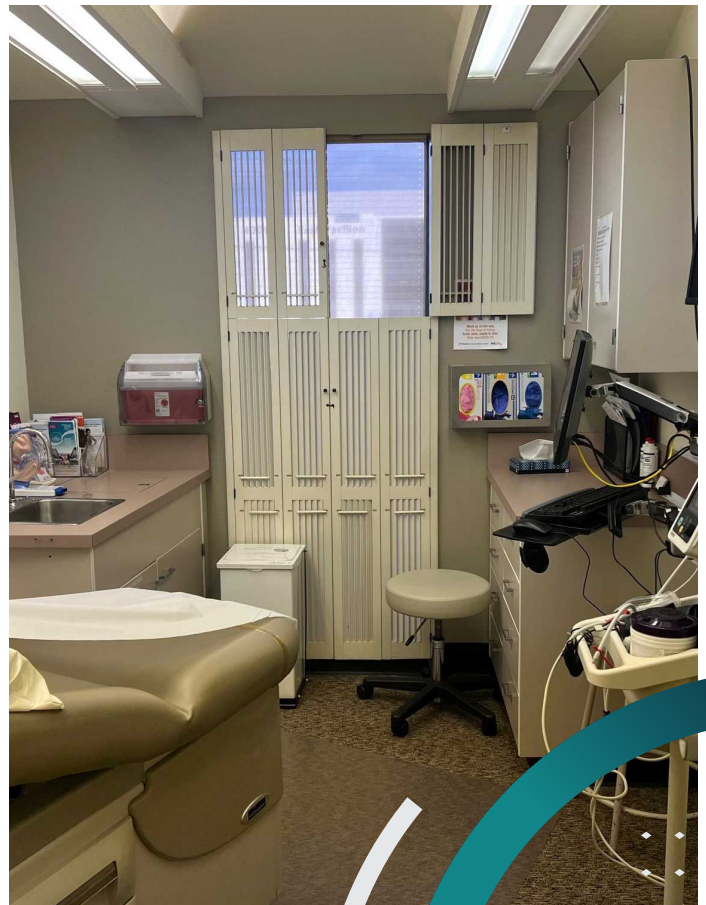
FLOOR PLANS



Lower Level
1,094 SF



Main Level
5,806 SF



MEDICAL OFFICE FOR SALE/LEASE
17722 TALBOT RD S
RENTON

17722-17726 TALBOT RD S, RENTON WA

CONTACT US

RYAN BRUNETTE

Associate
+1 206 292 6099
ryan.brunette@cbre.com

STEVE BRUNETTE

Senior Vice President
+1 206 292 6007
steve.brunette@cbre.com

CBRE, INC.

1420 5th Avenue
Suite 3800
Seattle, WA 98101

CBRE