

WARFIELD MASONRY

.5 Acre Secure Contractor Yard



LISTING INFORMATION

ADDRESS:	2601 S 96th Street, Tacoma WA
LOT SF:	23,958 SF
BUILDING SF:	1,089 SF
SALE PRICE:	\$1,050,000
YEAR BUILT:	1948, Renovated 1985
PARCEL NO:	0320314005
ZONING:	CE

COMMENTS

Contractor Yard with office and secure/fenced on a half acre yard with direct visibility along I-5 in the center of Tacoma and Lakewood.

LOCATION



Bruce Barker
bbarker@lee-associates.com
253.238.0048

Kyle Prosser
kprosser@lee-associates.com
253.444.3025

Tom Brown
tbrown@lee-associates.com
253.444.3024

 **LEE &
ASSOCIATES**
COMMERCIAL REAL ESTATE SERVICES

WARFIELD MASONRY

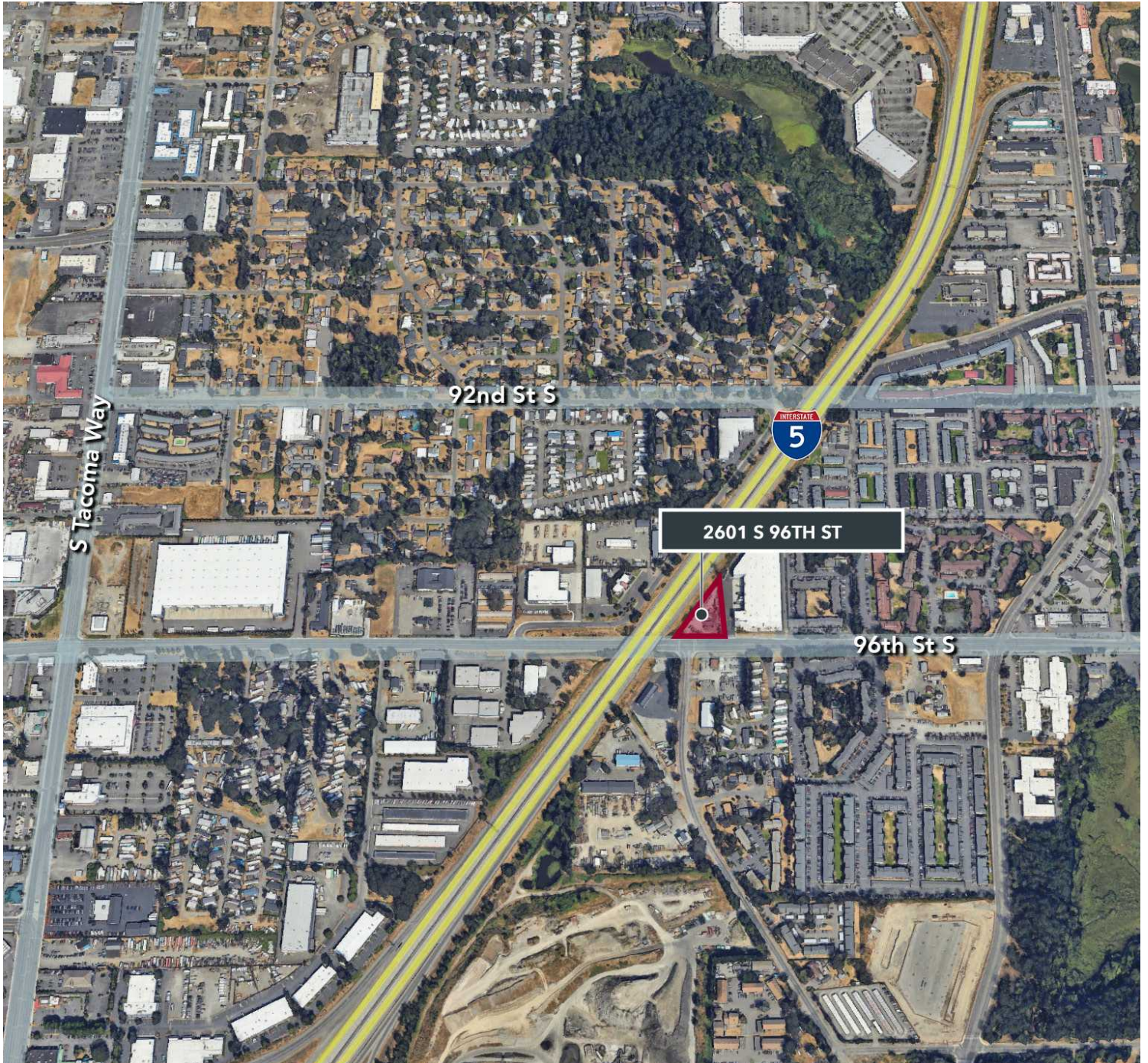
.5 Acre Secure Contractor Yard

**LEE &
ASSOCIATES**
COMMERCIAL REAL ESTATE SERVICES

Bruce Barker
bbarker@lee-associates.com
253.238.0048

Kyle Prosser
kprosser@lee-associates.com
253.444.3025

Tom Brown
tbrown@lee-associates.com
253.444.3024



WARFIELD MASONRY

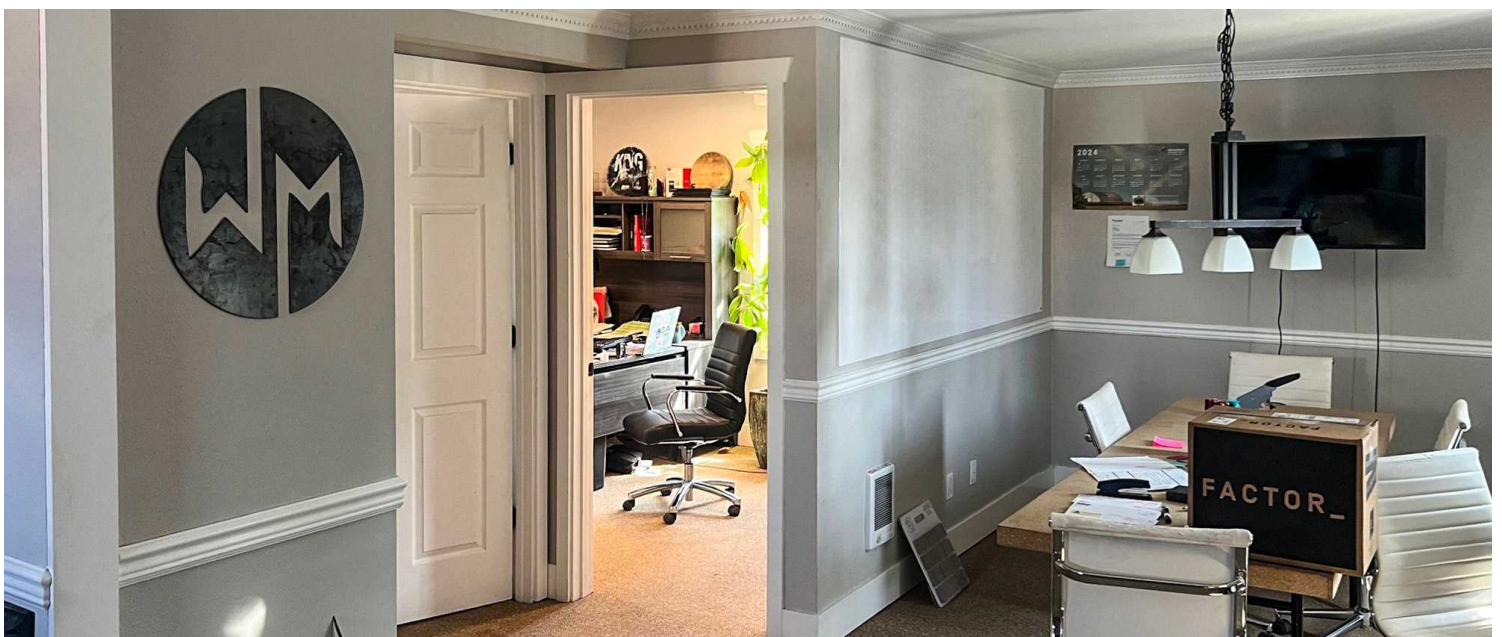
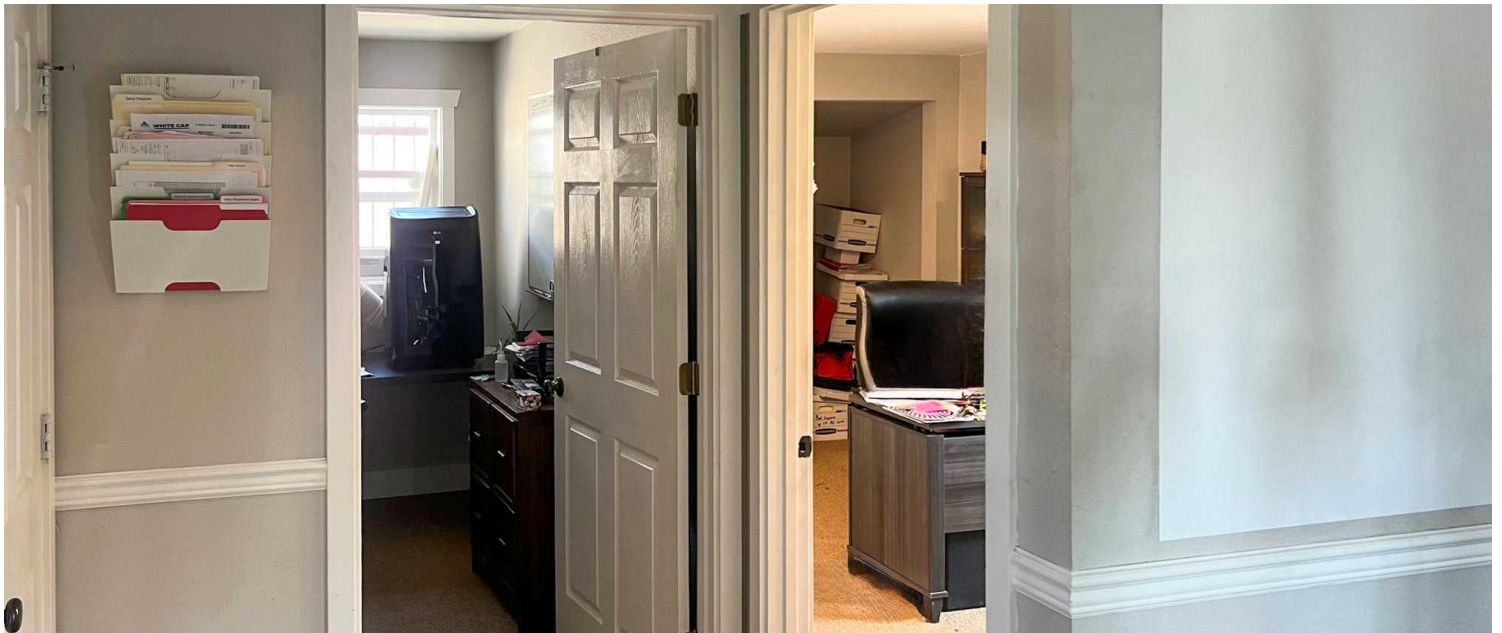
.5 Acre Secure Contractor Yard

LEE & ASSOCIATES
COMMERCIAL REAL ESTATE SERVICES

Bruce Barker
bbarker@lee-associates.com
253.238.0048

Kyle Prosser
kprosser@lee-associates.com
253.444.3025

Tom Brown
tbrown@lee-associates.com
253.444.3024



All information furnished regarding property for sale, rental or financing is from sources deemed reliable, but no warranty or representation is made to the accuracy thereof and same is submitted to errors, omissions, change of price, rental or other conditions prior to sale, lease or financing or withdrawal without notice. No liability of any kind is to be imposed on the broker herein.