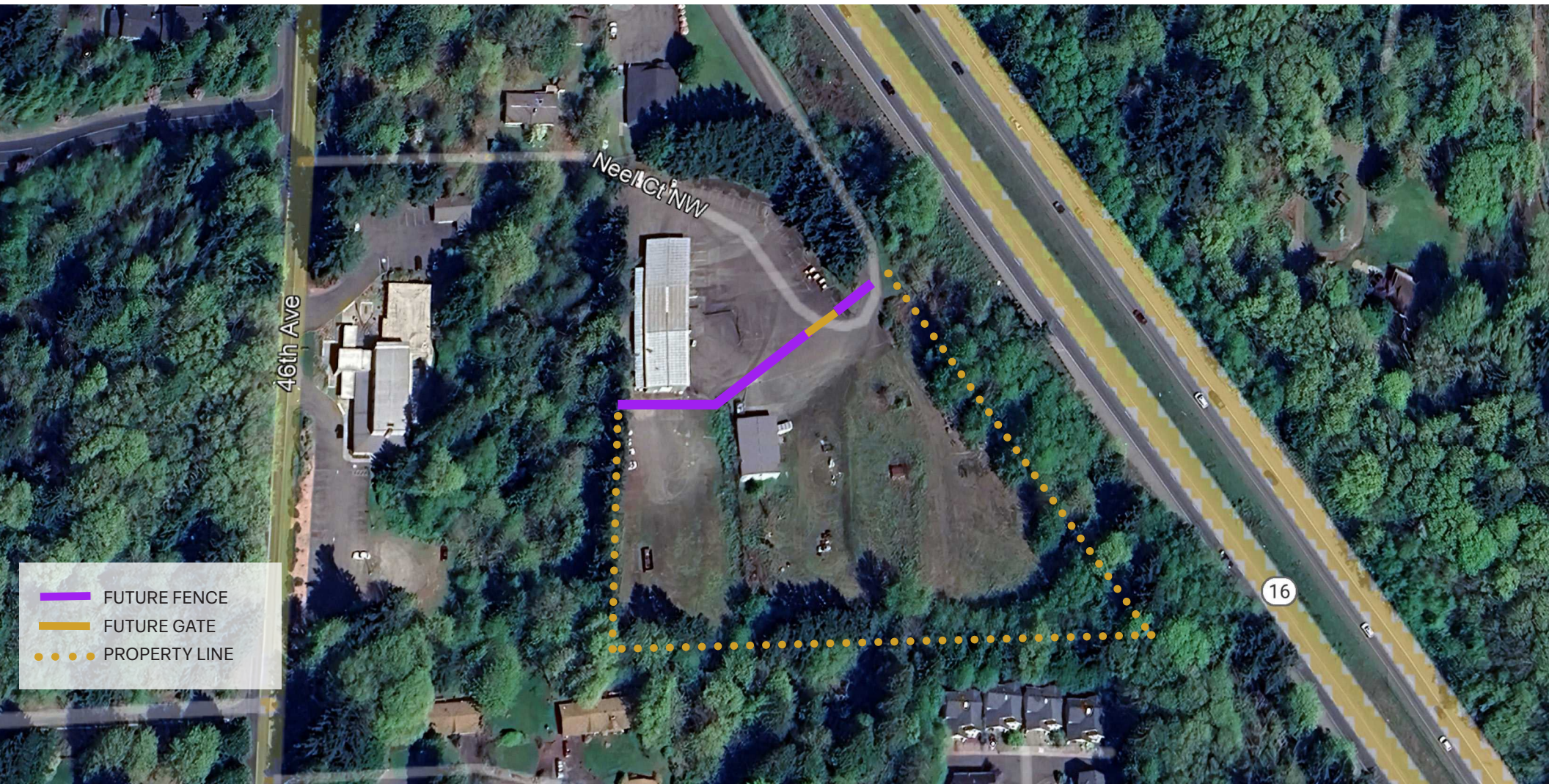
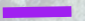
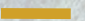



FOR SALE

2.75 Acres + 2,400 SF Shop

4542 Neel Ct NW, Gig Harbor, WA



-  FUTURE FENCE
-  FUTURE GATE
-  PROPERTY LINE

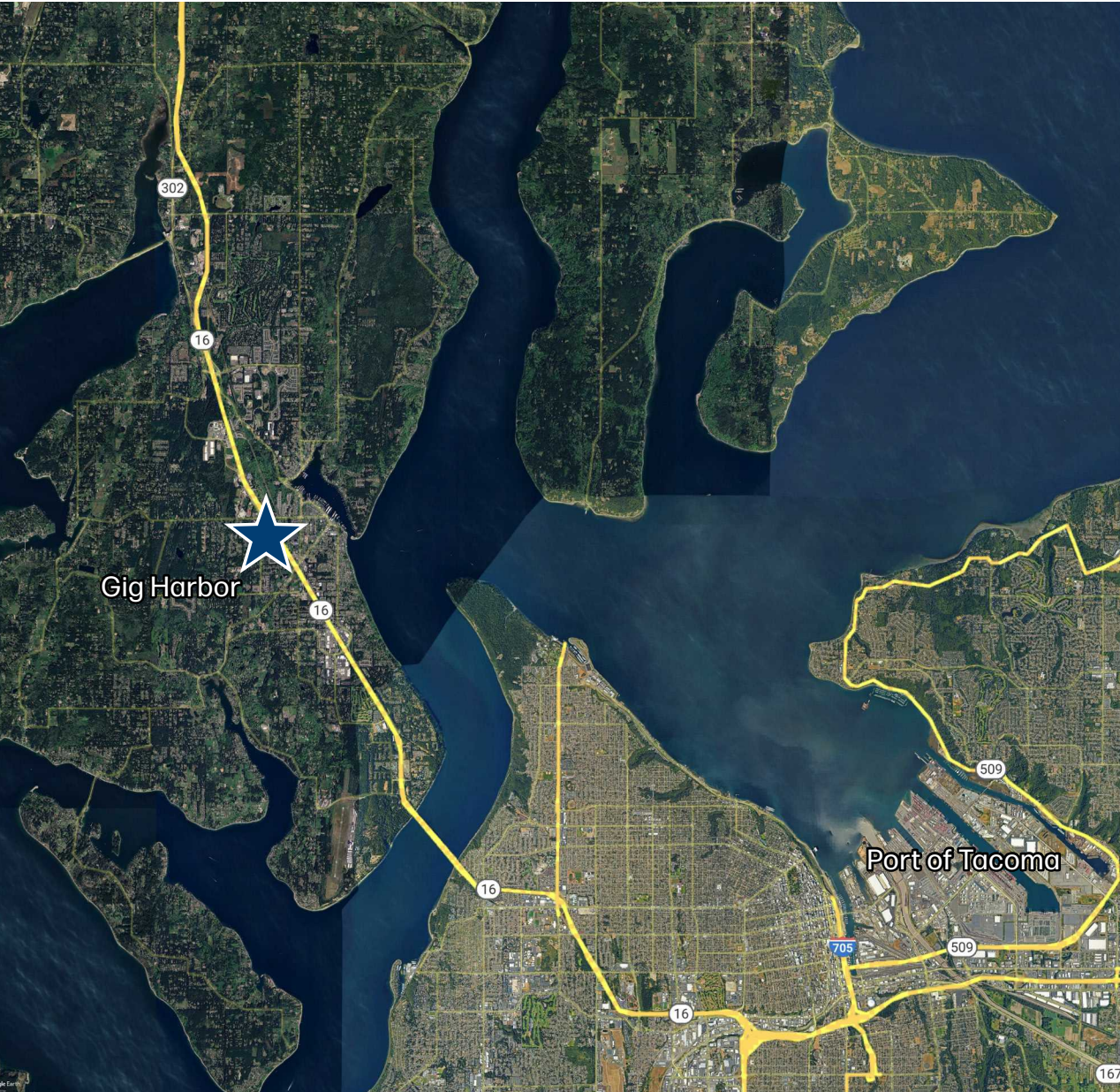
NEWMARK

MORGAN RICHEY, SIOR
Managing Director
425.362.1409
morgan.richey@nrmk.com

FOR SALE

2.75 Acres + 2,400 SF Shop

4542 Neel Ct NW, Gig Harbor, WA



PROPERTY DETAILS

- Total Size : 2.75 Acres
- Shop Size : 2,400 SF
- Loading : 2 Grade Level Doors
- Immediate access to Hwy 16
- Excess laydown yard
- Sale Price : \$2,250,000
- Buyer Note :
Transaction will require a short plat of the current property which is estimated to be 90 days. Buyer will be required to manage short plat process.

The information contained herein has been obtained from sources deemed reliable but has not been verified and no guarantee, warranty or representation, either express or implied, is made with respect to such information. Terms of sale or lease and availability are subject to change or withdrawal without notice.