

2300 E ST NE

FOR SALE - \$2,000,000

AUBURN, WA 98002

INDUSTRIAL BUILDING FOR SALE IN THE HEART OF AUBURN

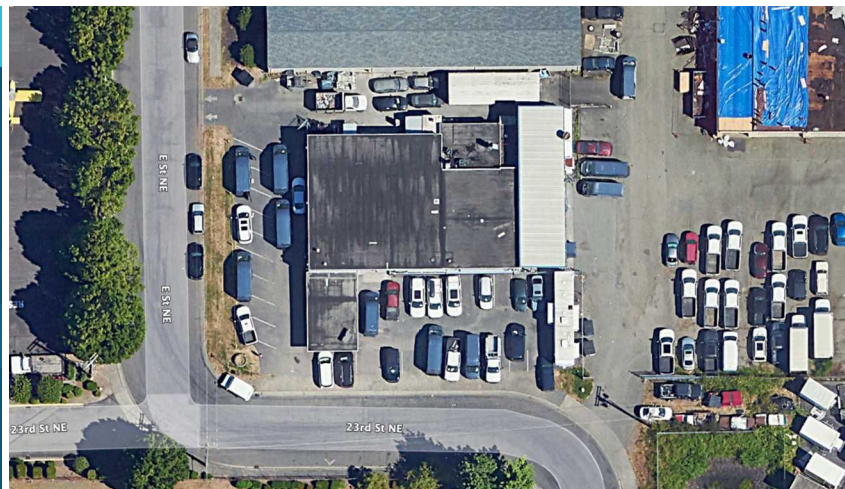


SALE INFORMATION

Building Size	Office Size	Land Size	Loading	Clear Height	Sale Price
6,117 SF	~500 SF	22,131 SF	4 GL	14'	\$2,000,000

PROPERTY HIGHLIGHTS

- 3 Phase Power
- Fully Climate Controlled
- 12'x12' Grade Doors
- External Paint Booth (can be removed)
- Forced Air System
- LED Lighting
- M2 Zoning
- Suitable for auto uses or general industrial uses
- Immediate Access to Auburn Way N



GRIFFIN DAY
206.787.1474
gday@neilwalter.com

JIM HONAN
206.787.1464
jhonan@neilwalter.com

All information references in this document are approximate. The information contained herein is contained from sources deemed reliable. It is provided without representation, warranty, or guarantee, expressed or implied as to accuracy. Prospective buyer or tenant should conduct its own independent investigation relating to the property, government codes and regulations, allowed uses, and all other matters, regardless of whether they are referred to or contained in this document.

2300 E ST NE

AUBURN, WA 98002



Building Size

6,117 SF

Office Size

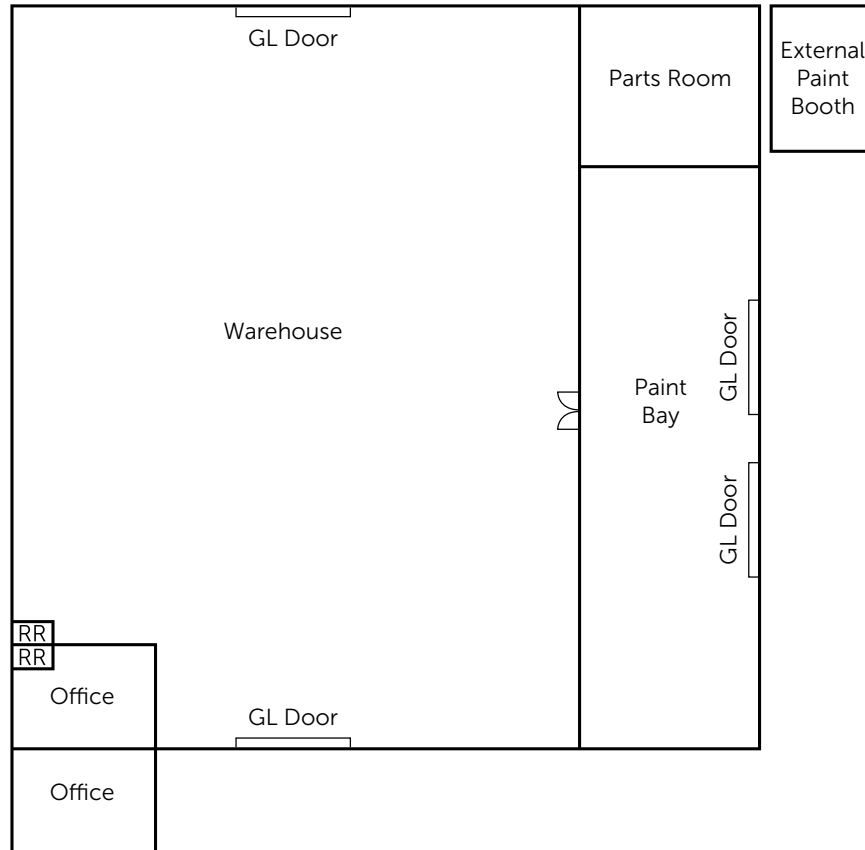
~500 SF

Loading

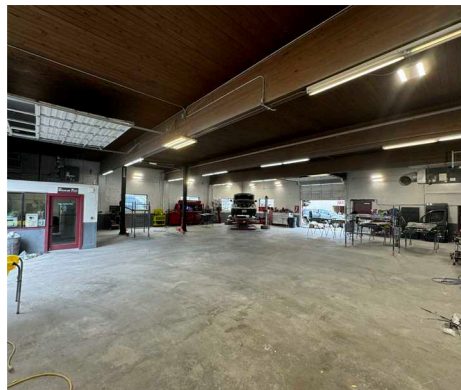
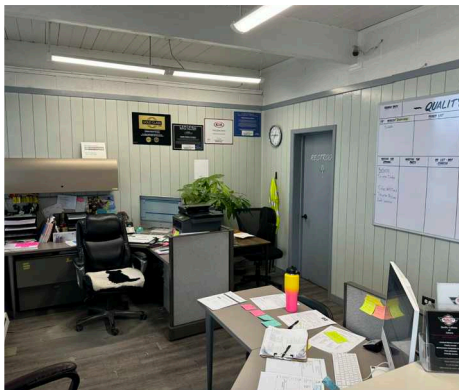
4 GL

Clear Height

14'



Not to Scale



GRIFFIN DAY
206.787.1474
gday@neilwalter.com

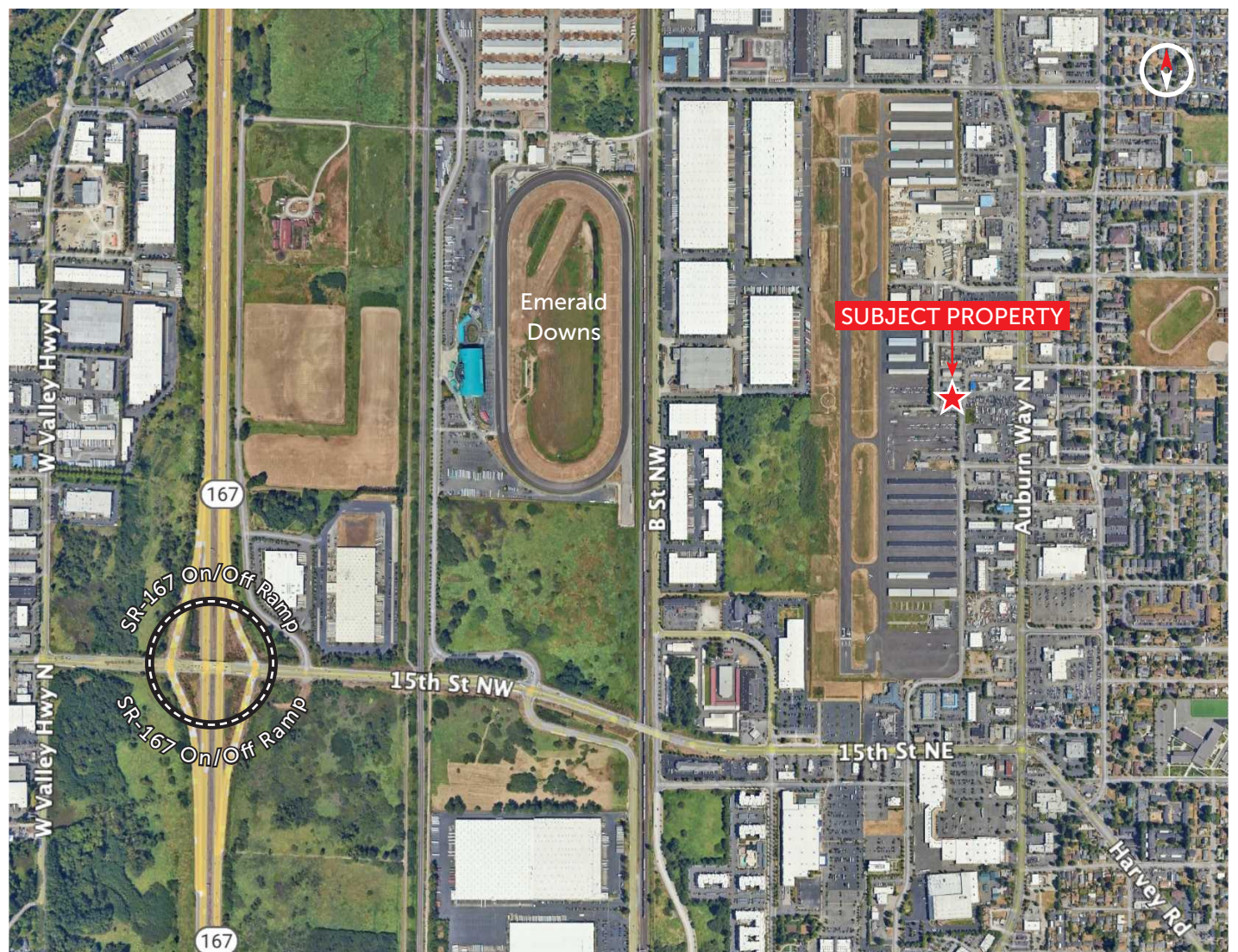
JIM HONAN
206.787.1464
jhonan@neilwalter.com

550 S Michigan St
Seattle, WA 98108
206.787.1800
www.neilwalter.com

All information references in this document are approximate. The information contained herein is contained from sources deemed reliable. It is provided without representation, warranty, or guarantee, expressed or implied as to accuracy. Prospective buyer or tenant should conduct its own independent investigation relating to the property, government codes and regulations, allowed uses, and all other matters, regardless of whether they are referred to or contained in this document.

2300 E ST NE

AUBURN, WA 98002



GRIFFIN DAY
206.787.1474
gday@neilwalter.com

JIM HONAN
206.787.1464
jhonan@neilwalter.com

550 S Michigan St
Seattle, WA 98108
206.787.1800
www.neilwalter.com

All information references in this document are approximate. The information contained herein is contained from sources deemed reliable. It is provided without representation, warranty, or guarantee, expressed or implied as to accuracy. Prospective buyer or tenant should conduct its own independent investigation relating to the property, government codes and regulations, allowed uses, and all other matters, regardless of whether they are referred to or contained in this document.