



1615 PUYALLUP

For Sale or Lease

1615 Puyallup St, Sumner, WA

NEWMARK

- Price: \$15,950,000
- 72,450 SF Building
- ~75,000 SF Fully Secured Excess Yard
- Call Brokers for Rates



PROPERTY DETAILS



72,450 RSF
Building Area



4,392 RSF
Office Space



75,000 SF
Excess Yard Area



5.28 Acres
Total Land Area
(229,228 SF)



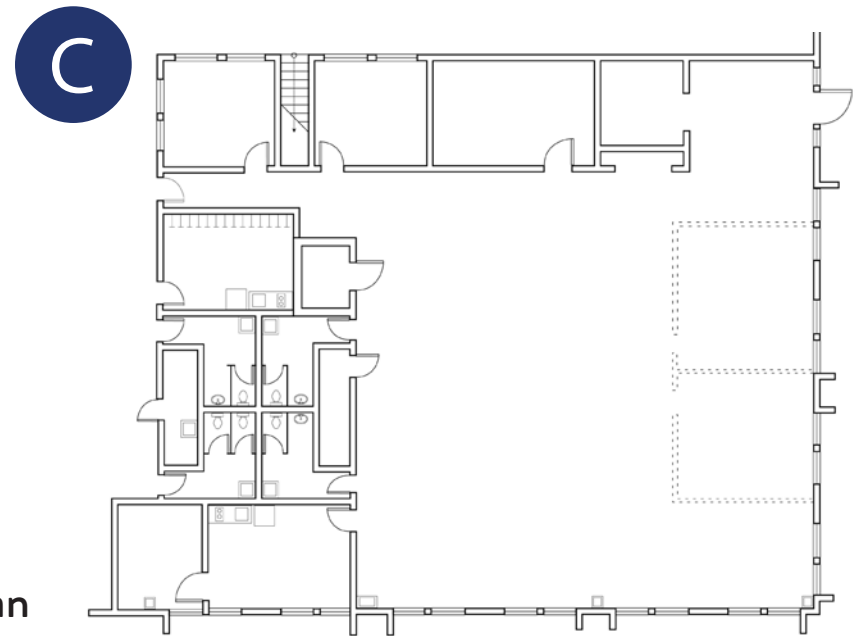
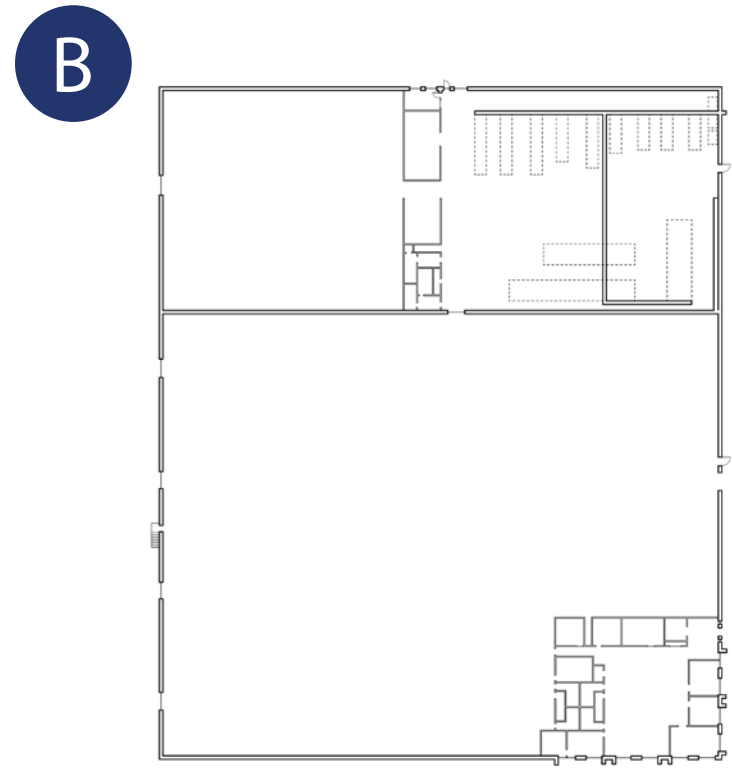
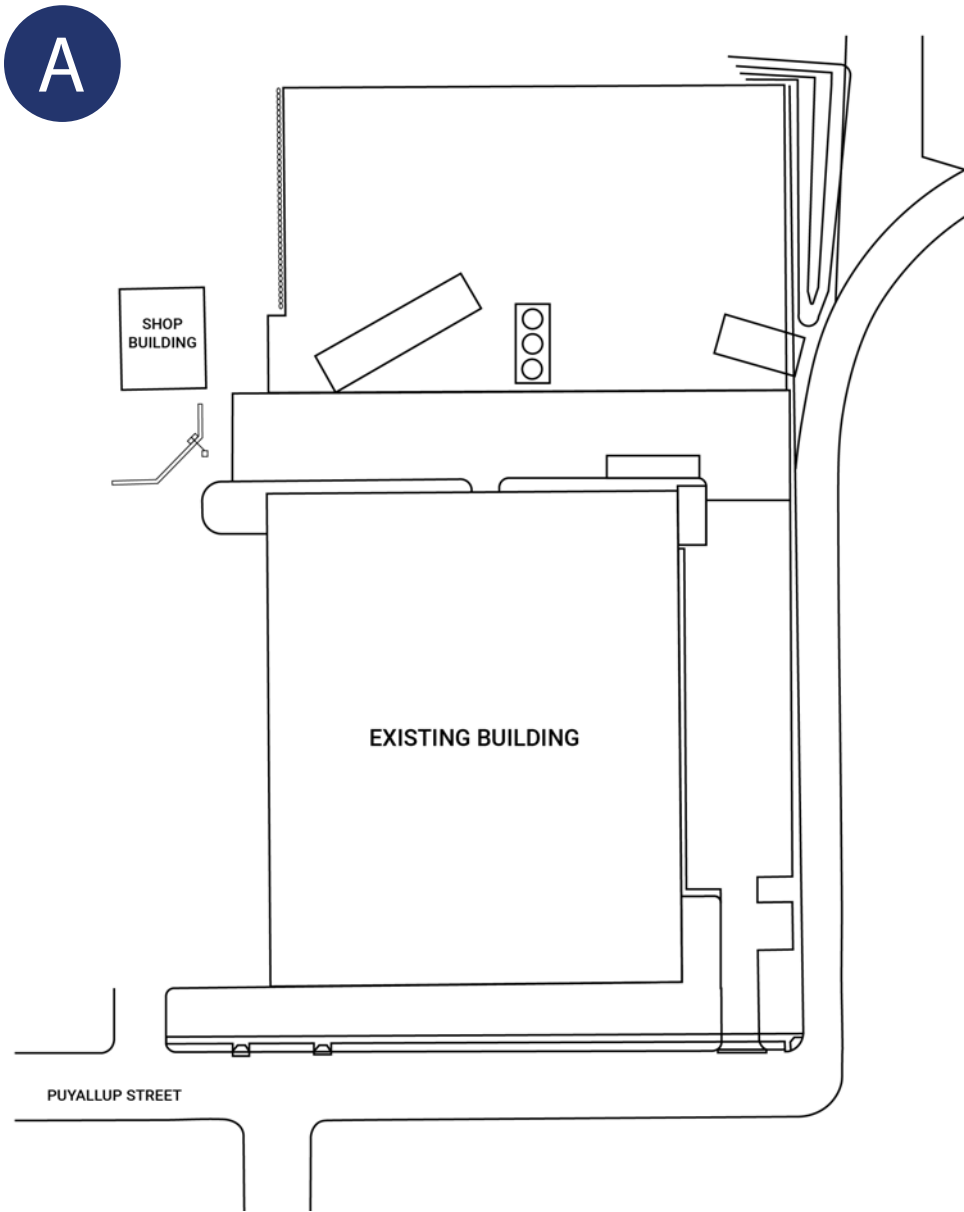
8 DH | 2 GL
Loading



22'
Clear Height



**Heavy Power
& Racking
Available**



SITE PLANS

A. Site Plan | B. Building Floor Plan | C. Office Floor Plan





Port of Tacoma

1615 Puyallup St
Sumner, WA

LOCATION

Centrally Located with excellent proximity to major ports.

10.3

MILES TO
PORT OF TACOMA

23

MILES TO
SEATAC INT'L AIRPORT

33

MILES TO
PORT OF SEATTLE



1615 PUYALLUP

The information contained herein has been obtained from sources deemed reliable but has not been verified and no guarantee, warranty or representation, either express or implied, is made with respect to such information. Terms of sale or lease and availability are subject to change or withdrawal without notice. MP-752 | 04/24

NEWMARK

THAD MALLORY, SIOR

Vice Chairman
425.362.1410
thad.mallory@nmrk.com

CAM WARREN

Managing Director
425.362.1395
cam.warren@nmrk.com