



Colliers

GIS PLAZA OFFICE CONDO

*Rare downtown Bellevue
small owner/user office
opportunity for sale in
modern mixed-use project*

999 110TH AVE NE, UNIT 200
BELLEVUE, WA 98004

EXCLUSIVELY LISTED BY

MONICA WALLACE

Kidder Mathews

425.753.4121

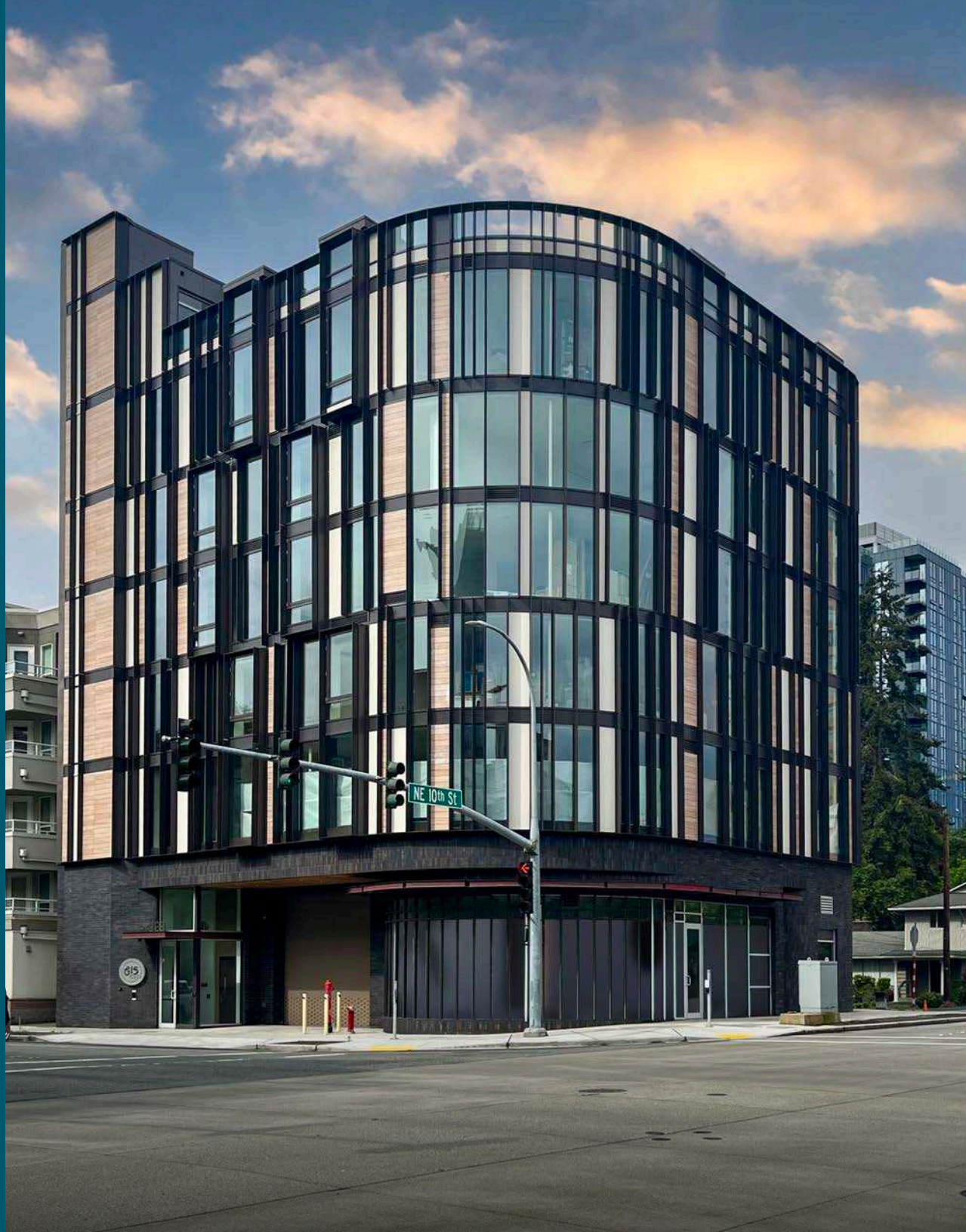
monica.wallace@kidder.com

JEFF CHANEY

Colliers

206.260.8900

jeff.chaney@colliers.com





A RARE DOWNTOWN OFFICE EXPERIENCE

Ideally situated close to freeways, transit, parks, cafes, as well as world-class retail & restaurants at Bellevue Square & The Shops at Bravern

AVAILABLE FOR SALE

ADDRESS	999 110th Ave NE, Unit 200 Bellevue, WA 98004
AVAILABLE SF	±1,794 SF
ASKING PRICE	\$1,490,000
YEAR BUILT	2023
PARKING	2 stalls
ZONING	DNTN-R
UNIT NO. C200	Corner suite on 2 nd level with floor-to-ceiling window line
CONDITION	Space is in shell condition and ready for buyer's construction.

The property is currently under court-appointed receivership. Any offer will require a sale motion and court approval.

±1,794 SF
AVAILABLE

\$1.49M
ASKING PRICE

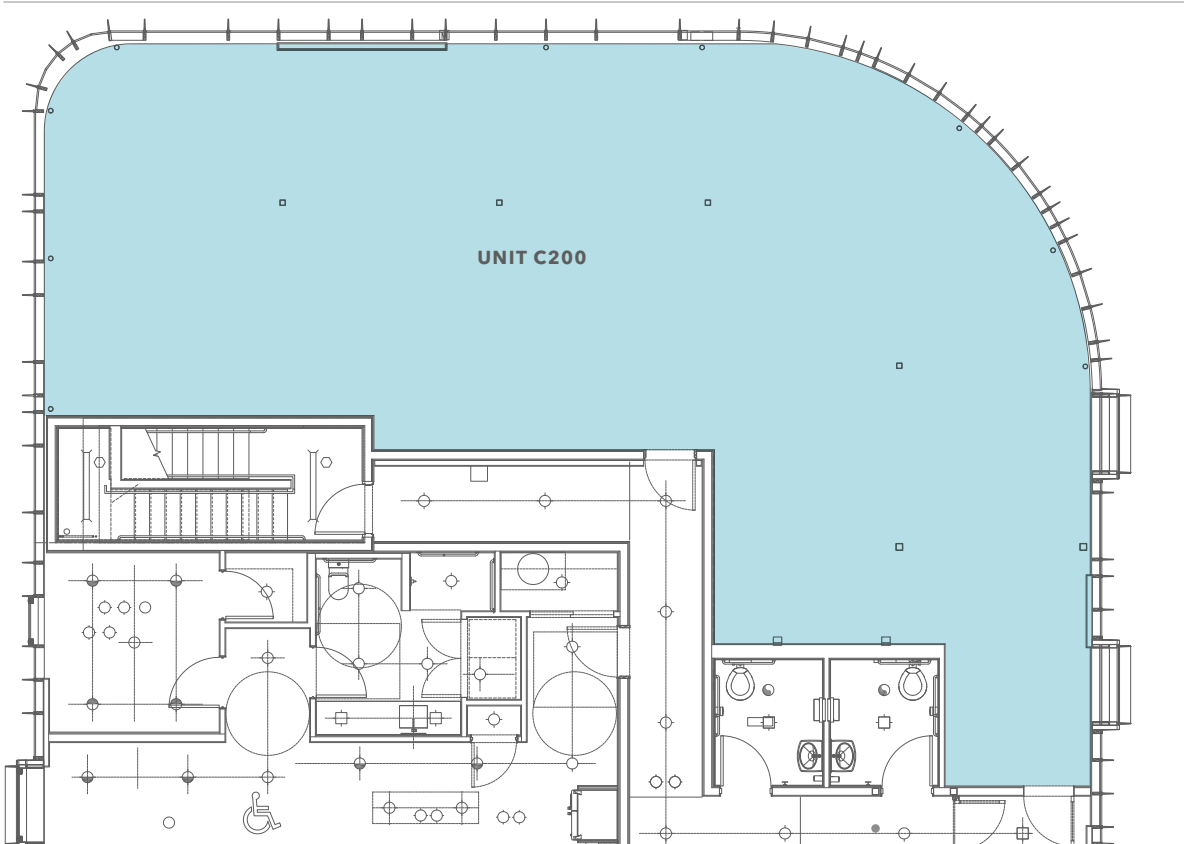
KIDDER MATHEWS

SECOND FLOOR PLAN

NE 10TH ST



110TH AVE NE



±1,794 SF

AVAILABLE

\$1.49M

ASKING PRICE

NOW

AVAILABLE



Not to scale and configuration must be verified by Tenant.

GIS PLAZA OFFICE CONDO



GIS PLAZA OFFICE CONDO

LINCOLN SQUARE

THE SHOPS AT THE BRAVERN

.5 miles away | 3 blocks away

THE NORTH FACE
macy's
NORDSTROM
TIFFANY & Co.
Eddie Bauer
BELLEVUE SQUARE
TESLA
SEPHORA
Tommy Bahama
AMERICAN EAGLE OUTFITTERS
Crate&Barrel
VICTORIA'S SECRET
xfinity
Apple
T-Mobile

AVAILABLE FOR SALE

KIDDER MATHEWS

GIS PLAZA OFFICE CONDO

Exclusively listed by

MONICA WALLACE

Kidder Mathews

425.753.4121

monica.wallace@kidder.com

JEFF CHANEY

Colliers

206.260.8900

jeff.chaney@colliers.com

KIDDER.COM

COLLIERS.COM

This information supplied herein is from sources we deem reliable. It is provided without any representation, warranty, or guarantee, expressed or implied as to its accuracy. Prospective Buyer or Tenant should conduct an independent investigation and verification of all matters deemed to be material, including, but not limited to, statements of income and expenses. Consult your attorney, accountant, or other professional advisor. All Kidder Mathews designs are the sole property of Kidder Mathews. Branded materials and layouts are not authorized for use by any other firm or person.

