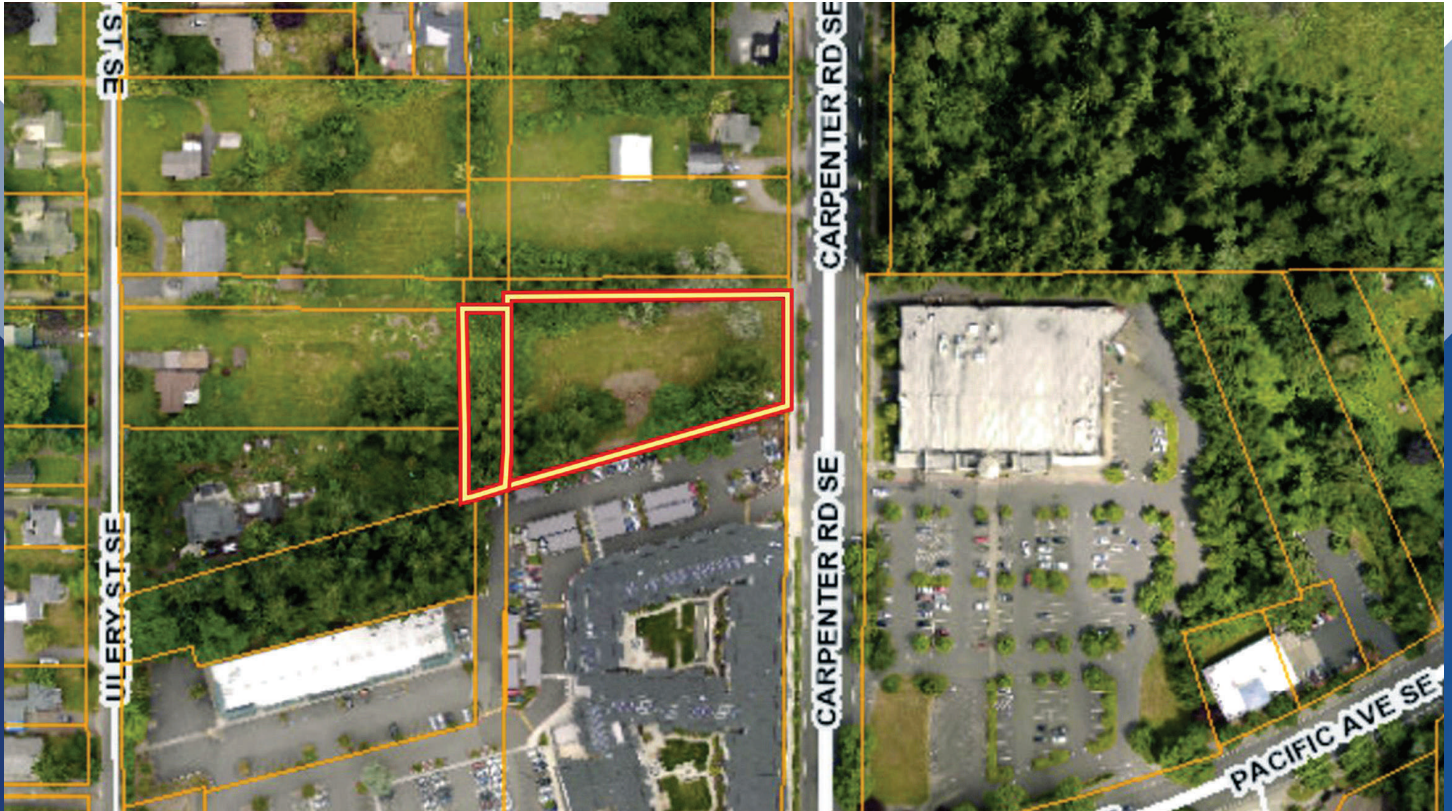


FOR SALE

1.64 ACRES OF COMMERCIAL LAND ON CARPENTER ROAD

905 CARPENTER RD SE, LACEY, WA 98503



SALE PRICE: **\$950,000**



Terry Wilson
360 789 5060
terry.wilson@cbolympia.com



Spencer Ingram
360 701 6439
spencer.ingrim@cbolympia.com



**COLDWELL BANKER
COMMERCIAL**
EVERGREEN OLYMPIC
REALTY, INC.

FOR SALE

1.64 ACRES OF COMMERCIAL LAND

905 Carpenter Rd SE Lacey, WA 98503



PROPERTY DESCRIPTION

1.64 acres of commercial land for sale on the high traffic Carpenter Road. The land is the last piece of commercially zoned land on this section of Carpenter Road. The land is zoned CBD 4 with the permitted uses allowing for multiple uses including car washes, medical, retail, pharmacies, day cares and multiple additional uses.

OFFERING SUMMARY

Sale Price:	\$950,000
Lot Size:	1.64 Acres

DEMOGRAPHICS	0.3 MILES	0.5 MILES	1 MILE
Total Households	345	827	3,418
Total Population	879	2,129	9,084
Average HH Income	\$90,033	\$86,555	\$90,608

Spencer Ingrim
360 701 6439
spencer.ingrim@cbolympia.com

Terry Wilson
360 789 5060
terry.wilson@cbolympia.com

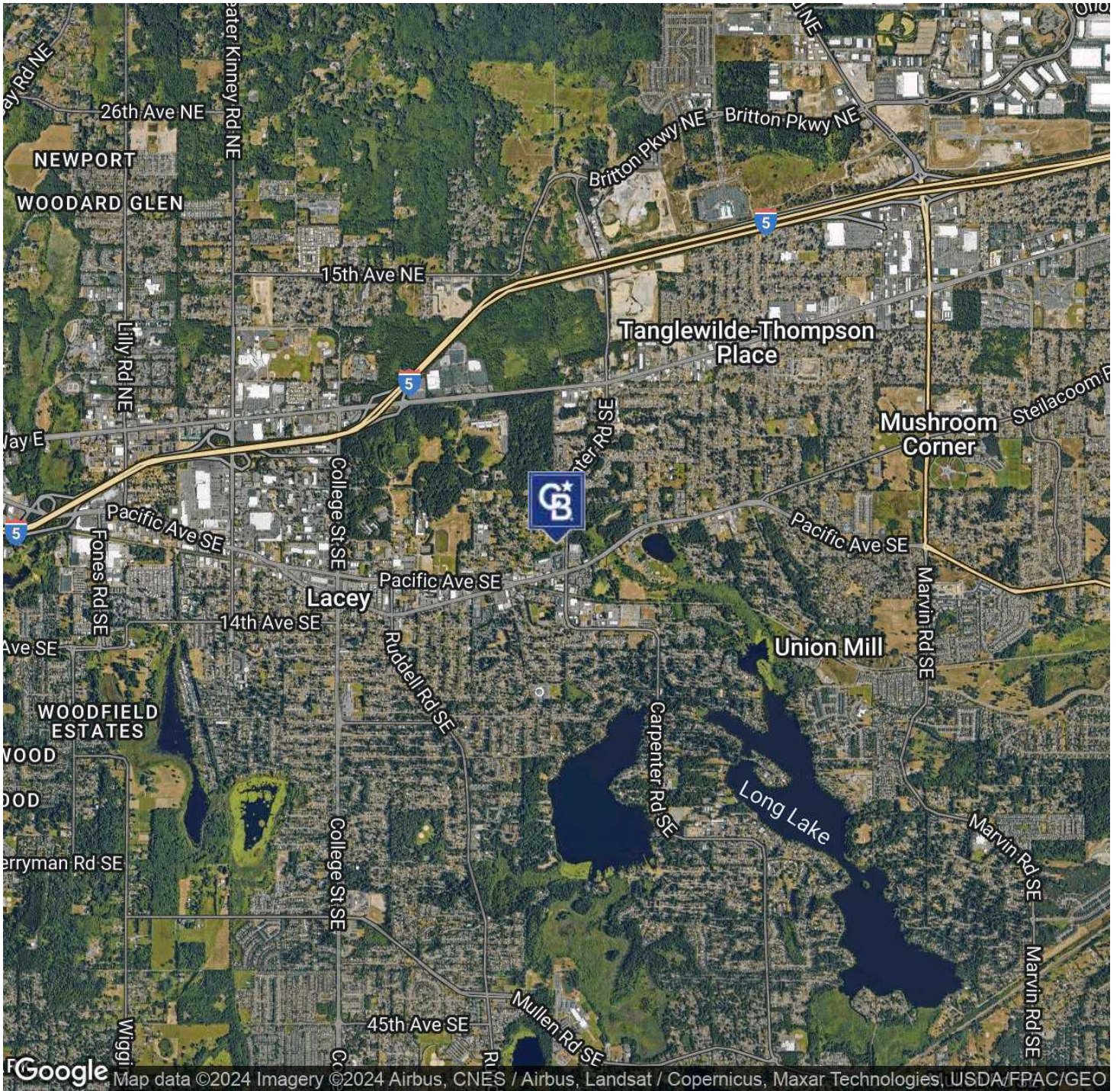


**COLDWELL BANKER
COMMERCIAL**
EVERGREEN OLYMPIC
REALTY, INC.

FOR SALE

1.64 ACRES OF COMMERCIAL LAND

905 Carpenter Rd SE Lacey, WA 98503



Spencer Ingrim

360 701 6439

spencer.ingrim@cbolympia.com

Terry Wilson

360 789 5060

terry.wilson@cbolympia.com



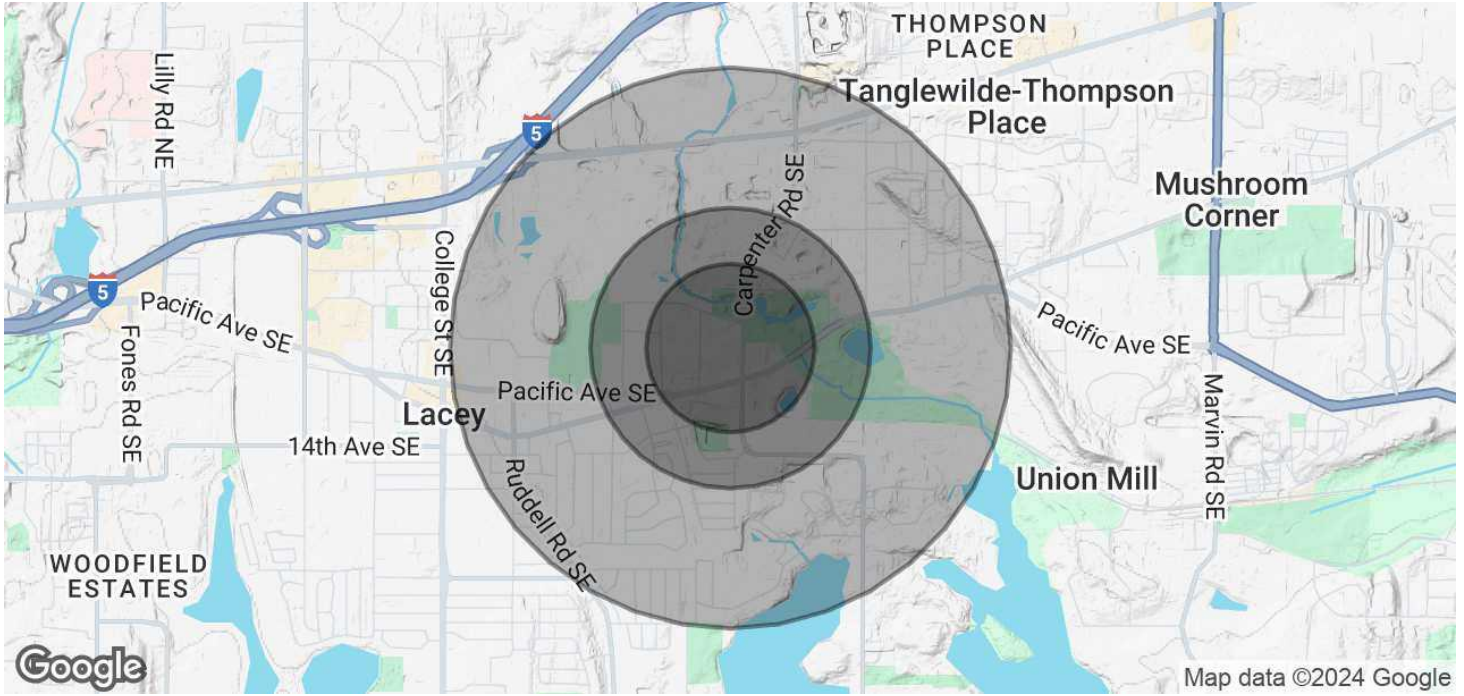
**COLDWELL BANKER
COMMERCIAL**

EVERGREEN OLYMPIC
REALTY, INC.

FOR SALE

1.64 ACRES OF COMMERCIAL LAND

905 Carpenter Rd SE Lacey, WA 98503



POPULATION

0.3 MILES

0.5 MILES

1 MILE

Total Population	879	2,129	9,084
Average Age	38	38	39
Average Age (Male)	37	37	38
Average Age (Female)	39	39	40

HOUSEHOLDS & INCOME

0.3 MILES

0.5 MILES

1 MILE

Total Households	345	827	3,418
# of Persons per HH	2.5	2.6	2.7
Average HH Income	\$90,033	\$86,555	\$90,608
Average House Value	\$378,951	\$398,605	\$419,708

Demographics data derived from AlphaMap

Spencer Ingrim

360 701 6439

spencer.ingrim@cbolympia.com

Terry Wilson

360 789 5060

terry.wilson@cbolympia.com



**COLDWELL BANKER
COMMERCIAL**
EVERGREEN OLYMPIC
REALTY, INC.