



For Sale

# 350 American Avenue | Jerome, ID

## Contacts

**Tami Walker**  
208 420 4601  
tami.walker@colliers.com

**Jerrika Gonzalez**  
208 344 6516  
jerrika.gonzalez@colliers.com

**Jake Fink**  
208 880 2545  
jake.fink@colliers.com

## Property Overview

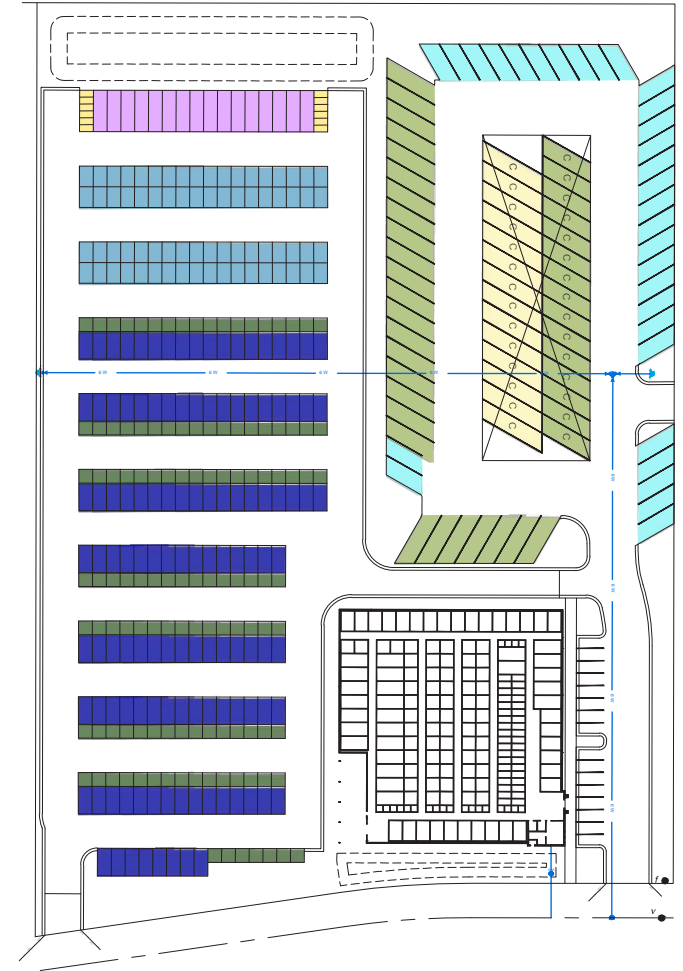
Property Type	Land
Land Size	7.17 Acres
Parcel No.	RP09S17E104813A
Sale Price	\$2,029,000

## Key Highlights

- Utilities to site
- Curb & gutter to site
- Located just off I-84
- Some site work completed for storage unit facility
- Platted for storage units

# Site Plan

*This parcel was approved for a storage unit facility. The owners had some dirt work done for the building of the facility. If the project stays as a storage facility, there is a steel package available at cost to the Buyer. The construction company would also be willing to complete the project.*



## Contact

**Tami Walker**  
208 420 4601  
tami.walker@colliers.com

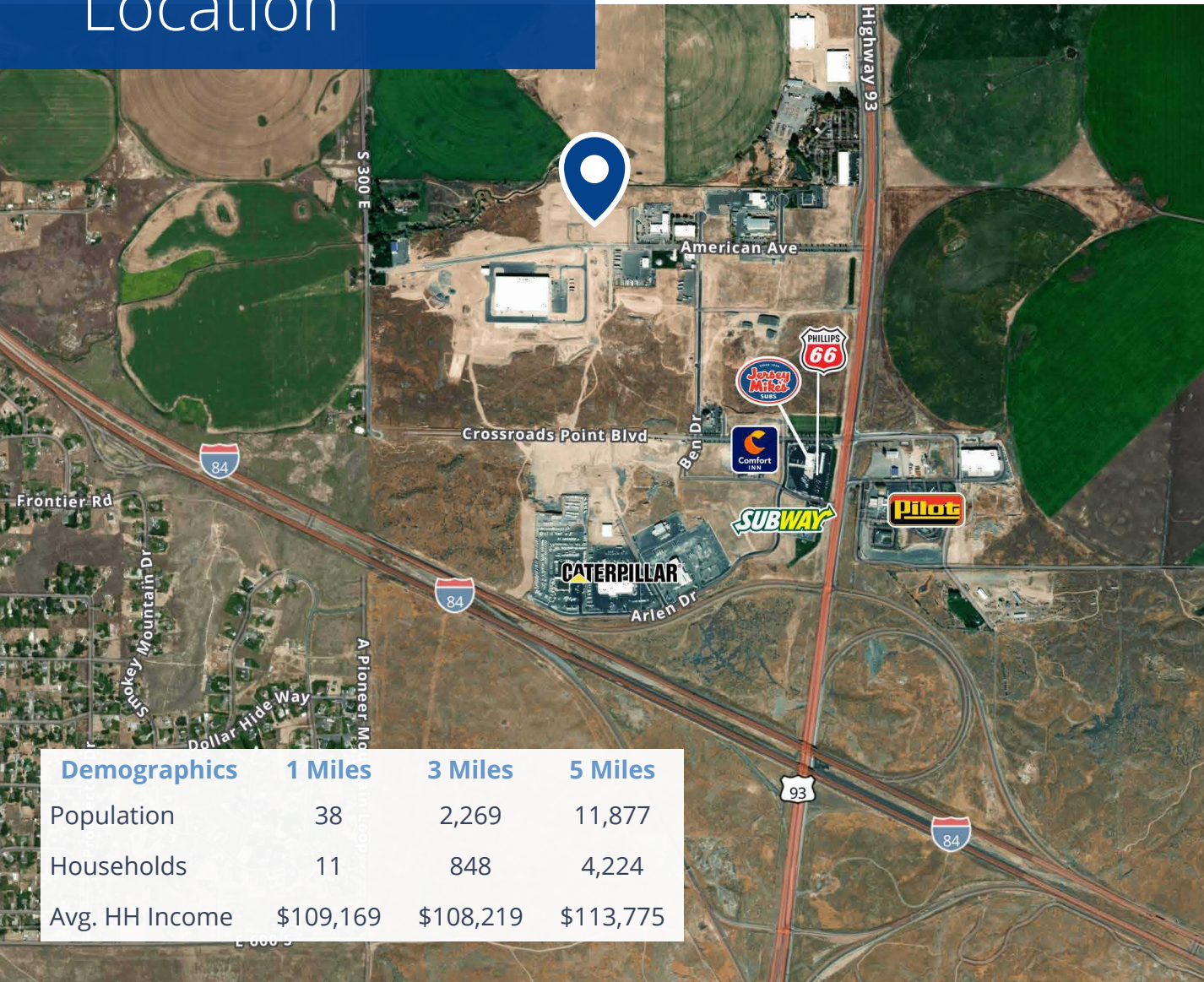
**Jerrika Gonzalez**  
208 344 6516  
jerrika.gonzalez@colliers.com

**Jake Fink**  
208 880 2545  
jake.fink@colliers.com

# Location

 Google Map

 Street View



205 Shoshone Street N, Suite 201  
 Twin Falls, Idaho 83301  
 208 910 2006  
[colliers.com/idaho](http://colliers.com/idaho)

This document has been prepared by Colliers for advertising and general information only. Colliers makes no guarantees, representations or warranties of any kind, expressed or implied, regarding the information including, but not limited to, warranties of content, accuracy and reliability. Any interested party should undertake their own inquiries as to the accuracy of the information. Colliers excludes unequivocally all inferred or implied terms, conditions and warranties arising out of this document and excludes all liability for loss and damages arising there from. This publication is the copyrighted property of Colliers and /or its licensor(s). © 2024. All rights reserved. This communication is not intended to cause or induce breach of an existing listing agreement. Colliers Treasure Valley, LLC.