

FOR SALE

Recently renovated
office building located
near downtown
Everett.

2002 Madison Building

2002 Madison Street, Everett, WA

*A perfect opportunity for professional
office owner-users looking to find a
spacious layout with an open floor plan.*

PROPERTY HIGHLIGHTS

- + Newly renovated (2020) professional office building for sale
- + Ideally suited for professional office owner-users
- + Built out with a reception area, bullpen, conference room, private offices, and a kitchenette
- + Large street facing windows that provide natural light and great visibility
- + Close proximity to Snohomish County Courthouse and Everett Mall Retail area

BLAKE STEDMAN

Senior Vice President
+1 425 586 5621
bstedman@nai-psp.com

RICHARD ZHOU

Associate
+1 425 586 5623
rzhou@nai-psp.com



THE INFORMATION CONTAINED HEREIN HAS BEEN GIVEN TO US BY THE OWNER OF THE PROPERTY OR OTHER SOURCES WE DEEM RELIABLE, WE HAVE NO REASON TO DOUBT ITS ACCURACY, BUT WE DO NOT GUARANTEE IT. ALL INFORMATION SHOULD BE VERIFIED PRIOR TO PURCHASE OR LEASE.

BUILDING SF

3,697 SF

LOT SIZE

0.14 Acres

ZONING

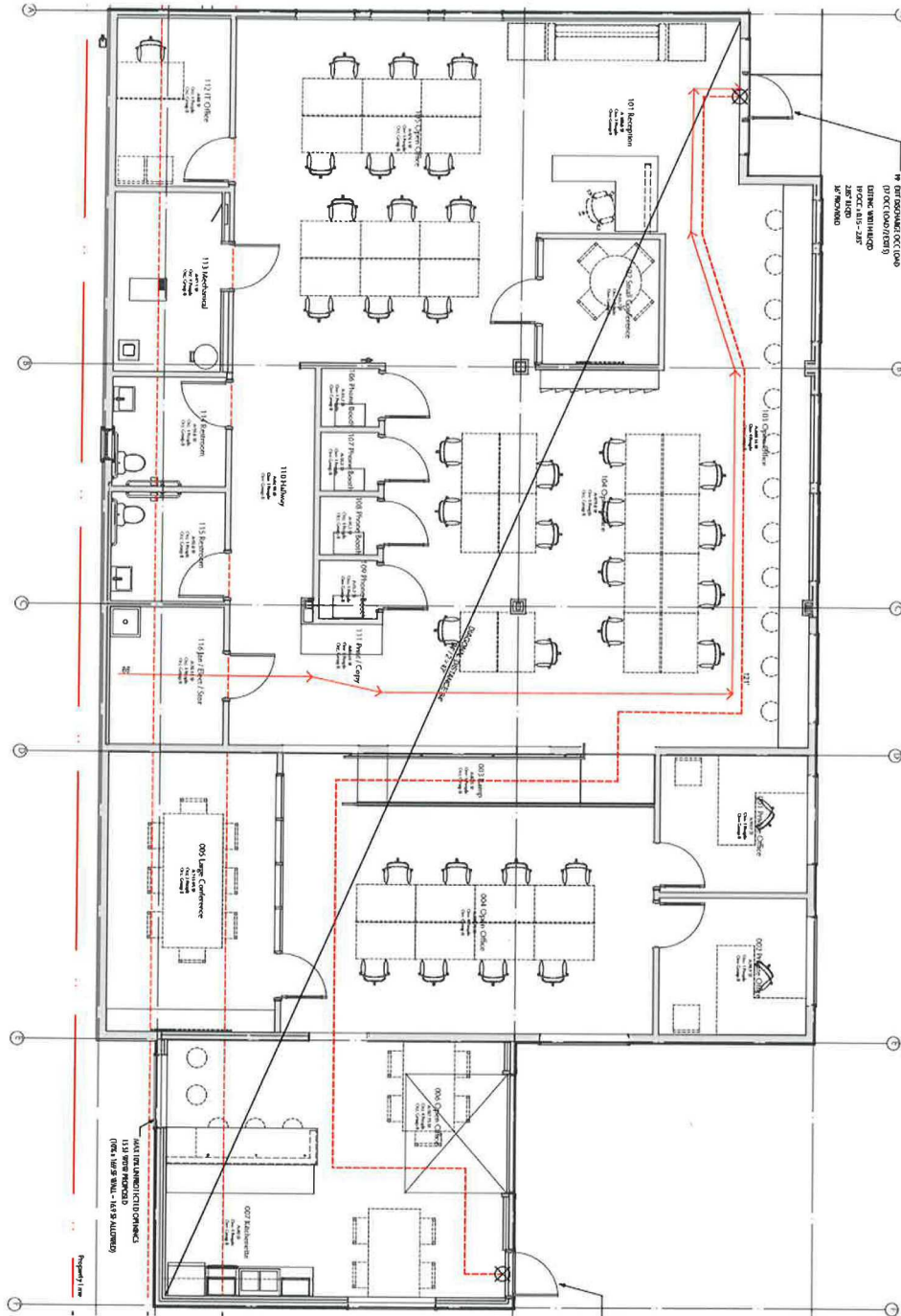
B1

PRICE

\$1,350,000

nai-psp.com

Floor Plan



BLAKE STEDMAN
 Senior Vice President
 +1 425 586 5621
 bstedman@nai-psp.com

RICHARD ZHOU
 Associate
 +1 425 586 5623
 rzhou@nai-psp.com



Spacious, open floorplan with plenty of natural light from windows.

Conference Room



Kitchenette



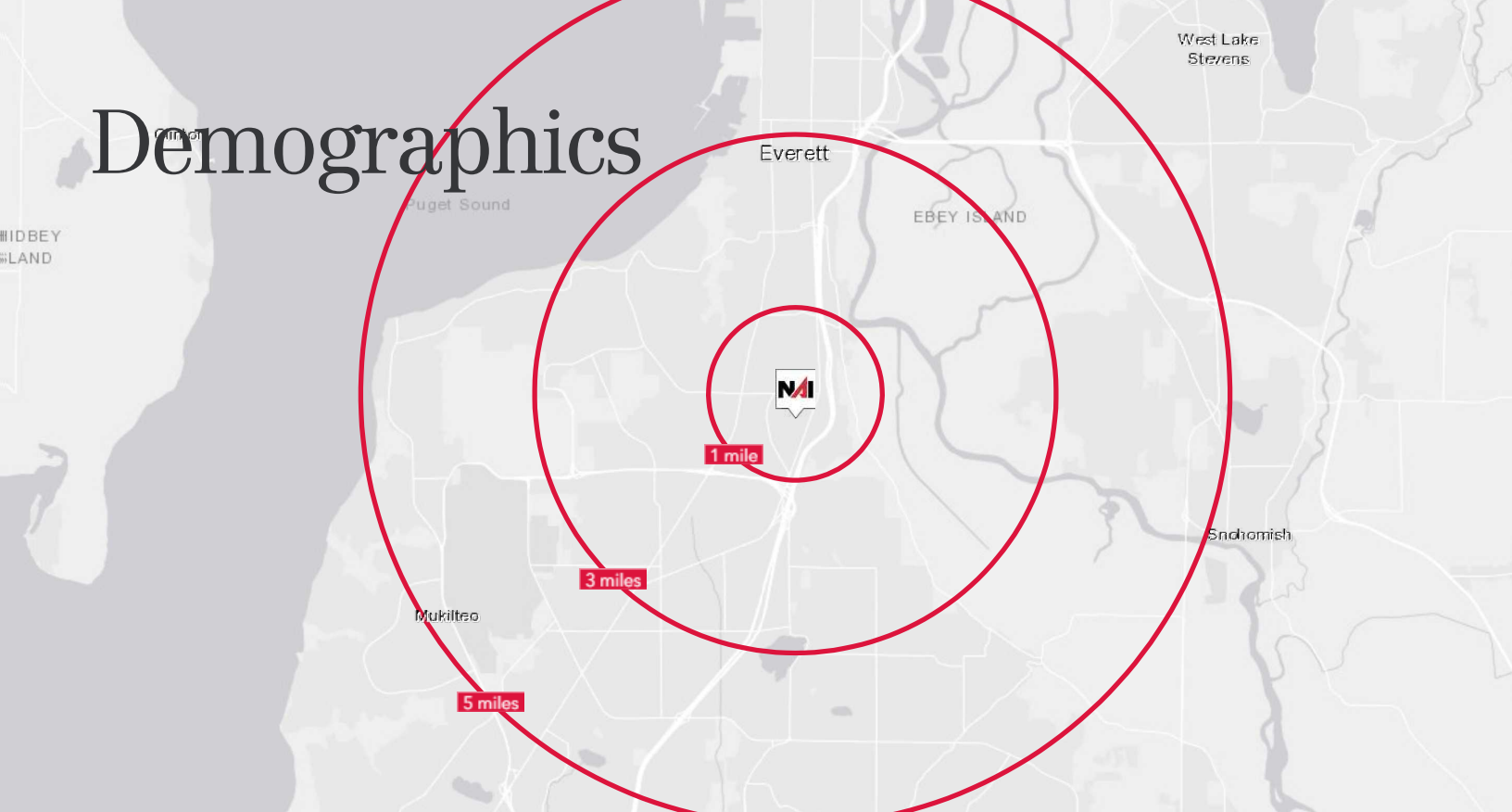
Reception Area

BLAKE STEDMAN
Senior Vice President
+1 425 586 5621
bstedman@nai-psp.com

RICHARD ZHOU
Associate
+1 425 586 5623
rzhou@nai-psp.com



Demographics



2002 MADISON STREET, EVERETT, WA

	1 MILE	3 MILES	5 MILES
Population	14,227	89,871	210,862
2029 Population	14,337	92,440	217,787
Households	5,439	35,423	81,418
Median Age	38.7	38.2	37.8
Median HH Income	\$83,329	\$83,839	\$90,222

BLAKE STEDMAN
Senior Vice President
+1 425 586 5621
bstedman@nai-ppsp.com

RICHARD ZHOU
Associate
+1 425 586 5623
rzhou@nai-ppsp.com

