



Owner Carry - Priced to Sell

Tyhee Industrial Park
12780 Go Way Avenue, Chubbuck, ID

Don Zebe
208 403 1973
don.zebe@colliers.com

Jared Zebe
208 709 7311
jared.zebe@colliers.com

Mike Zebe
208 705 6453
mike.zebe@colliers.com

Property Overview

Property Type	Industrial
Total Building Size	15,872 SF
Warehouse	12,700 SF
Enclosed Receiving Area	2,500 SF
Office	672 SF
Office	28' X 24'
Construction Type	CMU
Year Built	2023
Acres	1.5
Zoning	Light Industrial
Rail Service	No
Ceiling Height	18'8"
Dock High Doors	1 with dock leveler
Van Height Doors	1 with dock leveler
Grade level Drive-in Doors	1
Parking	Ample
Power	3 Phase
Lighting	LED
Heating & Cooling	Gas Heat in Warehouse
Sale Price	\$3,200,000
Property Access	Contact Agents

Key Highlights

- New construction (CMU)
- Located in Bannock County jurisdiction
- Well & septic
- Easy access

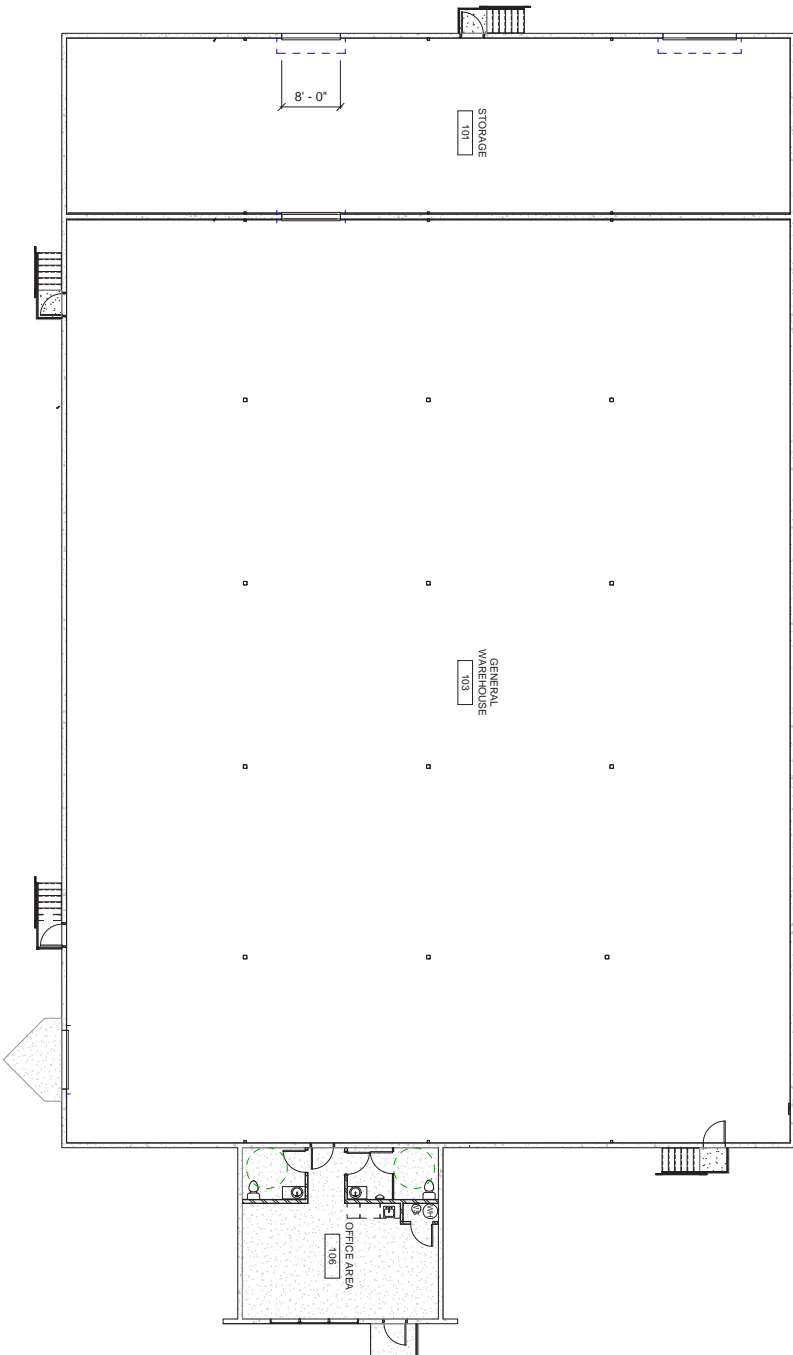
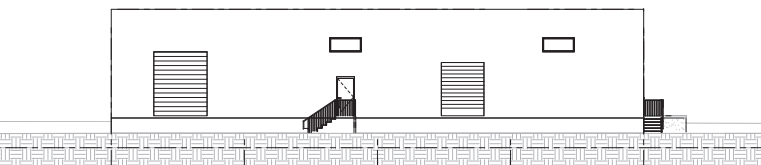
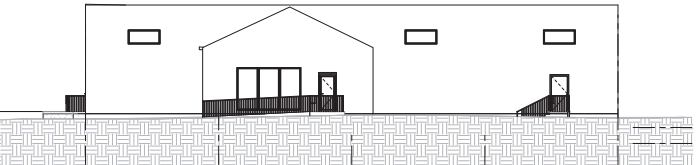
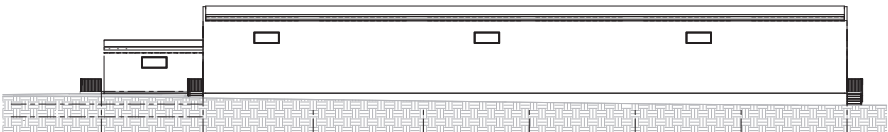
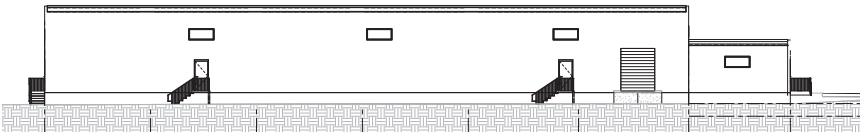


Property Photos



Floor Plan

Elevations



Location



2043 E Center Street
Pocatello, Idaho 83201
208 951 2100
colliers.com/idaho

This document has been prepared by Colliers for advertising and general information only. Colliers makes no guarantees, representations or warranties of any kind, expressed or implied, regarding the information including, but not limited to, warranties of content, accuracy and reliability. Any interested party should undertake their own inquiries as to the accuracy of the information. Colliers excludes unequivocally all inferred or implied terms, conditions and warranties arising out of this document and excludes all liability for loss and damages arising there from. This publication is the copyrighted property of Colliers and /or its licensor(s). © 2024. All rights reserved. This communication is not intended to cause or induce breach of an existing listing agreement. Colliers Portneuf Valley, LLC.