

**FOR SALE**

Sinclair Way & 3rd Avenue  
Bremerton, WA 98312



# SINCLAIR PLACE - LAND

Lisa Tallman

First Western Properties—Tacoma Inc. | 253.472.0404  
6402 Tacoma Mall Blvd, Tacoma, WA 98409 | fwp-inc.com

**SINCLAIR PLACE** forms an intersection within West Bremerton. Situated amidst a blend of residential and commercial zones, this area embodies the vibrant essence of Bremerton. Here, locals and visitors alike traverse through the streets, exploring the nearby shops, cafes, and restaurants that dot the vicinity. With its convenient location and Sinclair Way & 3rd Avenue serves as a focal point for community interaction and urban activity in this charming corner of Washington state.

## SINCLAIR WAY & 3RD AVENUE | LAND

### PARCEL NO. 282401-1-085-2001

- 2.73 Acres (Approximately 118,919 sf)
- Undeveloped Land
- Zoned R-10, City of Bremerton
- Price: \$599,999.00
- Conceptual residential drawings available.



# DEMOGRAPHICS

## POPULATION

| Mile 1 | Mile 3 | Mile 5  |
|--------|--------|---------|
| 4,290  | 45,496 | 101,756 |

## AVERAGE HH INCOME

| Mile 1   | Mile 3   | Mile 5    |
|----------|----------|-----------|
| \$90,578 | \$97,827 | \$104,463 |

## DAYTIME POPULATION

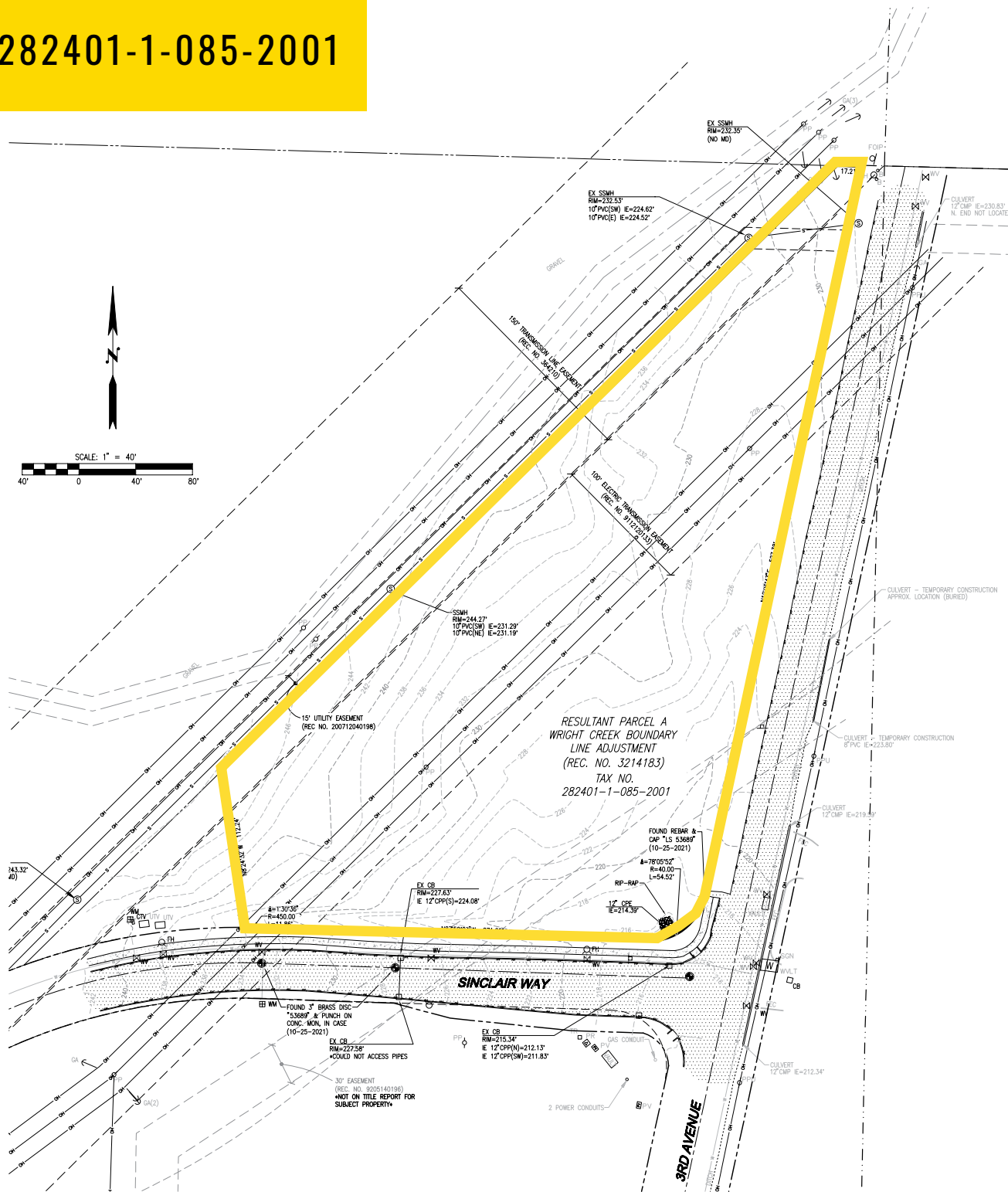
| Mile 1 | Mile 3 | Mile 5 |
|--------|--------|--------|
| 2,461  | 29,070 | 58,805 |



SUMMARY

# PARCEL NO. 282401-1-085-2001

## PARCEL MAP



PARCEL MAP



RESULTANT PARCEL A  
WRIGHT CREEK BOUNDARY  
LINE ADJUSTMENT  
(REG. NO. 3214183)  
TAX NO.  
282401-1-085-2001

SINCLAIR WAY

D AVENUE

PARCEL NO. 282401-1-085-2001






**BREMERTON, WA** is nestled along the Kitsap Peninsula, is a vibrant city steeped in maritime heritage and natural beauty. Home to the Puget Sound Naval Shipyard, it has a rich history intertwined with naval operations, making it a significant hub for military activity. Beyond its naval roots, Bremerton offers an eclectic mix of cultural attractions, including art galleries, museums, and theaters. Its scenic waterfront, dotted with parks and walking trails, invites residents and visitors alike to explore the stunning Pacific Northwest landscape.




TACOMA | KIRKLAND | PORTLAND | SEATTLE

RELATIONSHIP FOCUSED.  
RESULTS DRIVEN.

LISA TALLMAN

 253.471.5504

 [lisa@firstwesternproperties.com](mailto:lisa@firstwesternproperties.com)

First Western Properties—Tacoma Inc. | 253.472.0404  
6402 Tacoma Mall Blvd, Tacoma, WA 98409 | [fwp-inc.com](http://fwp-inc.com)

© First Western Properties, Inc. DISCLAIMER: The above information has been secured from sources believed to be reliable, however, no representations are made to its accuracy. Prospective tenants or buyers should consult their professional advisors and conduct their own independent investigation. Properties are subject to change in price and/or availability without notice.