

SNOHOMISH YARD

FOR SALE: \$799,000

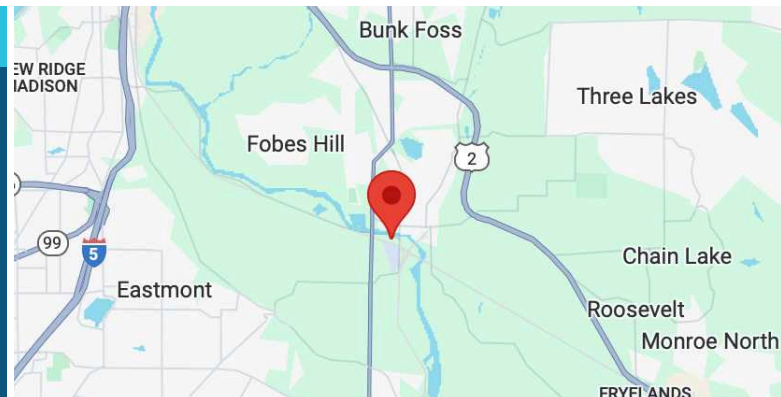
95XX LOWELL SNOHOMISH RIVER RD | SNOHOMISH, WA

1.70 ACRE LIGHT INDUSTRIAL YARD



BUILDING INFORMATION

- 1.70 Acres (74,052 SF)
- Zoned LI (Light Industrial - Snohomish County)
- Parcel #28051300403200
- Land is flat and level



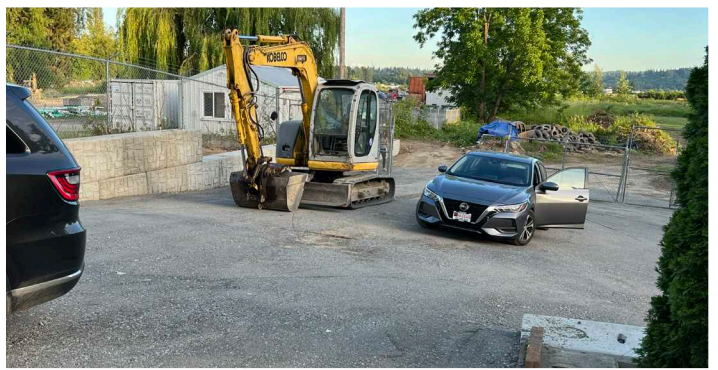
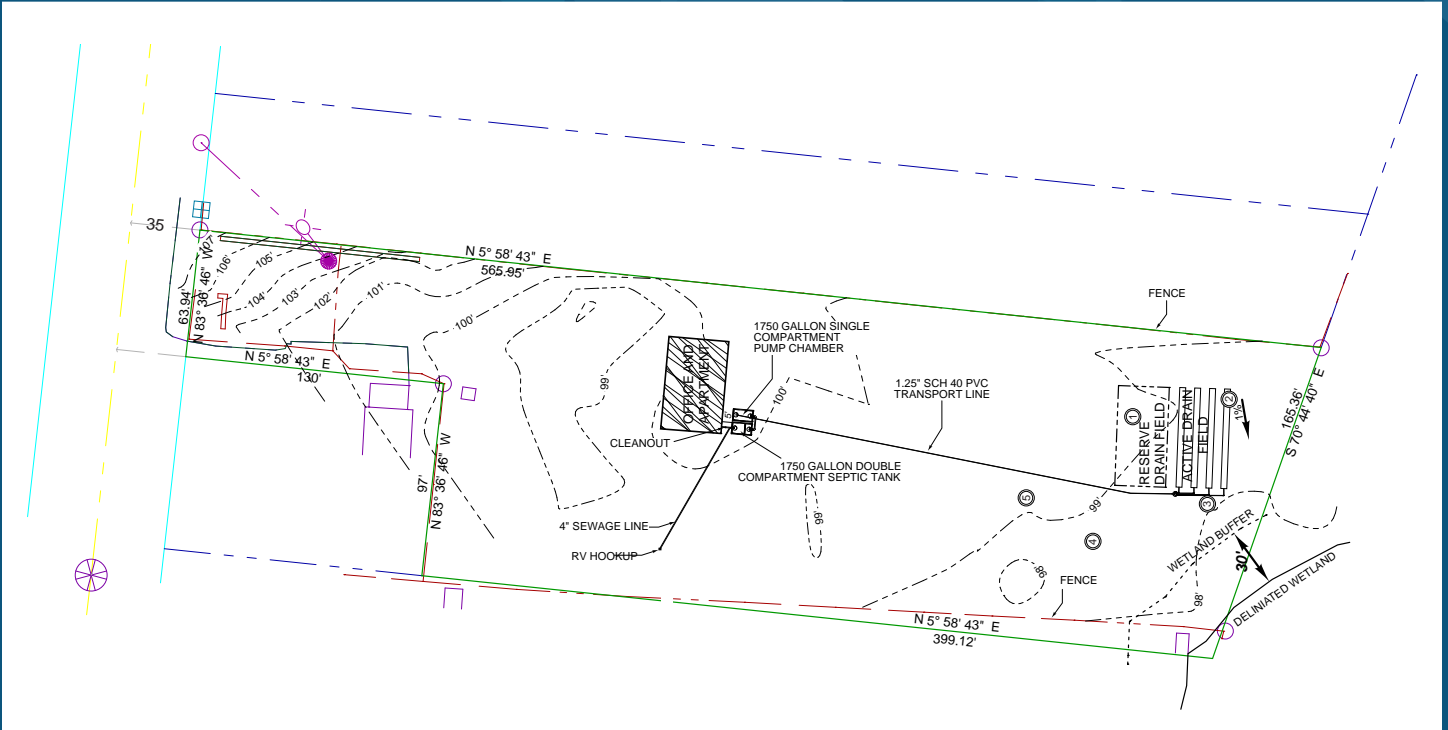
FLETCHER FARRAR
206.787.1469
ffarrar@neilwalter.com

BEN DAVIDSON
206.787.1470
bdavidson@neilwalter.com

All information references in this document are approximate. The information contained herein is contained from sources deemed reliable. It is provided without representation, warranty, or guarantee, expressed or implied as to accuracy. Prospective buyer or tenant should conduct its own independent investigation relating to the property, government codes and regulations, allowed uses, and all other matters, regardless of whether they are referred to or contained in this document.

SNOHOMISH YARD

95XX LOWELL SNOHOMISH RIVER RD | SNOHOMISH, WA



FLETCHER FARRAR
206.787.1469
ffarrar@neilwalter.com

BEN DAVIDSON
206.787.1470
bdavidson@neilwalter.com

550 S Michigan St
Seattle, WA 98108
206.787.1800
www.neilwalter.com

All information references in this document are approximate. The information contained herein is contained from sources deemed reliable. It is provided without representation, warranty, or guarantee, expressed or implied as to accuracy. Prospective buyer or tenant should conduct its own independent investigation relating to the property, government codes and regulations, allowed uses, and all other matters, regardless of whether they are referred to or contained in this document.