

# 114 WEST HOLLY STREET

114 - 118 W HOLLY STREET | BELLINGHAM, WA 98225



# T14-T18 W HOLLY STREET

BELLINGHAM, WA 98225



**15.5k SF**

TWO FLOORS + MEZZANINE

**\$1.65M**

SALE PRICE

Iconic 1925 commercial building for sale in the heart of downtown Bellingham. For many years this was home to Sportsman Chalet which was a staple in the community. The building features brick walls, high ceilings, and nearly 70 feet of frontage on Holly Street. This is a perfect owner-user investment opportunity for a retail or office user. 2.5% commission offered to the outside broker.





**92k**  
TOTAL  
POPULATION

**78k**  
DAYTIME  
POPULATION

**\$104k**  
AVG. HOUSEHOLD  
INCOME

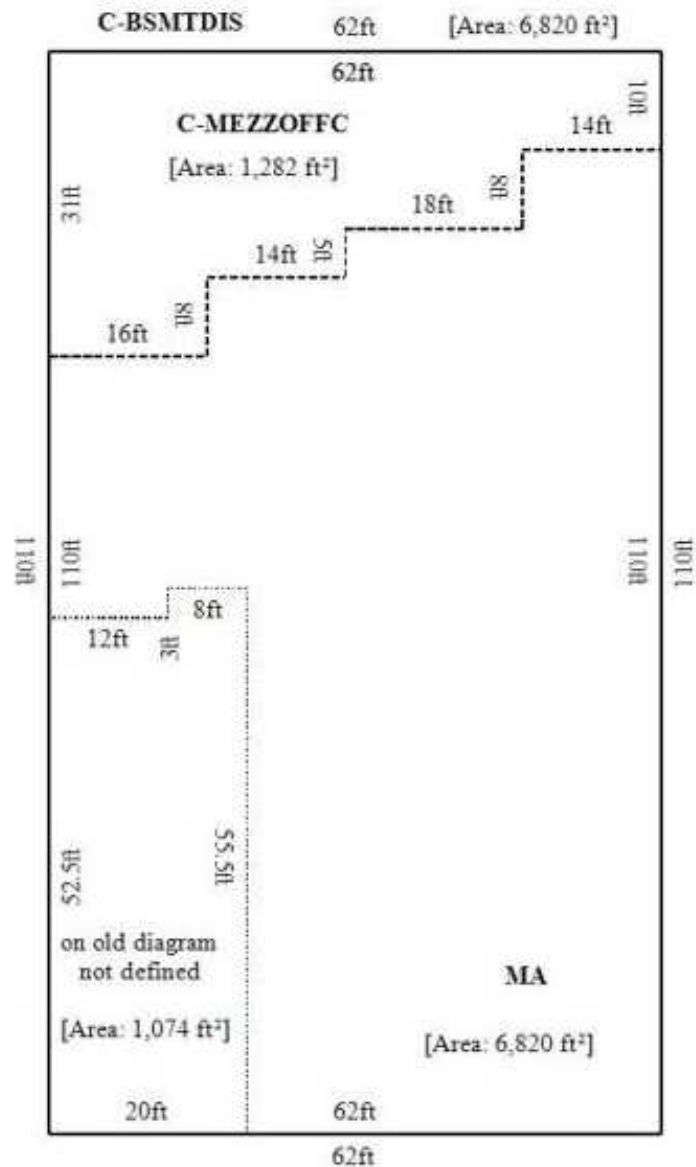
**5.9k**  
BUSINESSES

**78%**  
ADULTS WITH  
COLLEGE EDUCATION

**48k**  
EMPLOYEES

\*2024 PROJECTIONS FOR BELLINGHAM, WA. COLLECTED VIA SITESUSA





**UNIT 1** +/-1,500 SF (LEASED ON LONG-TERM LEASE - BAR/LOUNGE)

**UNIT 2** +/-14,000 SF (AVAILABLE - 2 FLOORS + MEZZANINE)

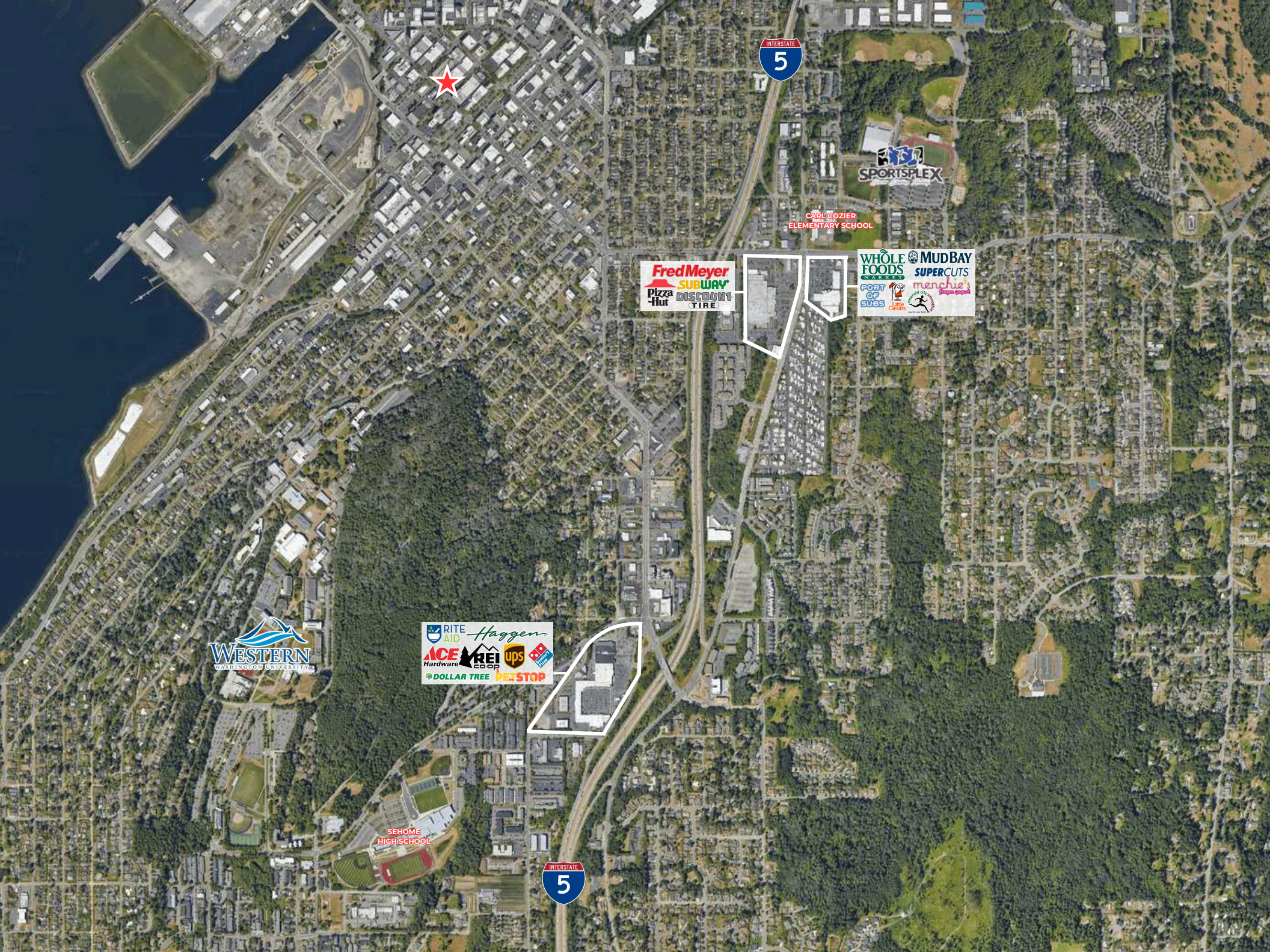


Parcel ID 380330-170147-0000

**Zoning** Commercial - Urban Village







CARL GOZIER  
ELEMENTARY SCHOOL



SEHOME  
HIGH SCHOOL







## **ADAM GREENBERG**

**SENIOR VICE PRESIDENT | PARTNER**  
**ADAM@PAADVISORS.COM**

**425.503.1339**

## **TYSON CLARKE**

**SENIOR VICE PRESIDENT | PARTNER**  
**TYSON@PAADVISORS.COM**

**360.319.4855**

