

SALE

LYNNWOOD LAND

19304 40th Ave W Lynnwood, WA 98036



Sale Price

\$895,000

OFFERING SUMMARY

Lot Size: 16,988 SF

Zoning: RS8

APN: 00372600500500

PROPERTY OVERVIEW

This prime development opportunity in central Lynnwood is perfect for building a dream home, subdividing for two spacious houses, or creating multiple smaller units. It's a walker's paradise with excellent access to downtown Lynnwood's amenities, including the light rail, mass transit, recreation center, library, and senior center.

Lynnwood combines urban convenience with outdoor appeal, boasting numerous parks and trails for outdoor enthusiasts. Shopping is a breeze, with Alderwood Mall, Nordstrom Rack, and Target nearby plus premium grocery options, including Trader Joe's, Whole Foods, Fred Meyer, Safeway, and Costco. This location falls within the highly sought-after Edmonds School District.

PROPERTY HIGHLIGHTS

- Corner Lot
- Subdividable, Potential for 6 units, buyer to verify
- 140 feet of frontage on 40th Ave W
- Easy access to I-5/405

Gretchen Hamm

206.972.1651

gretchen@gretahamm.com

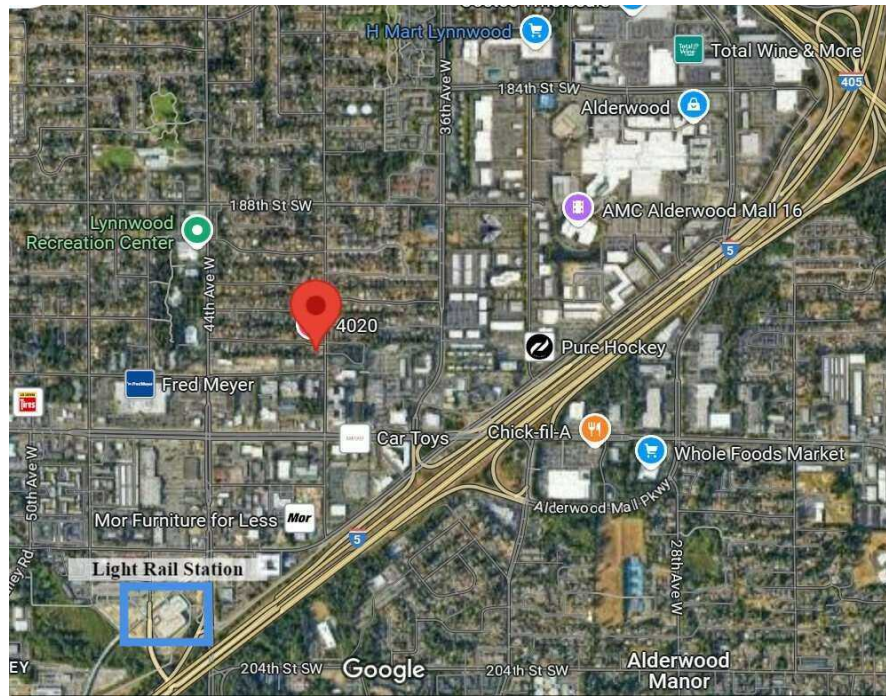
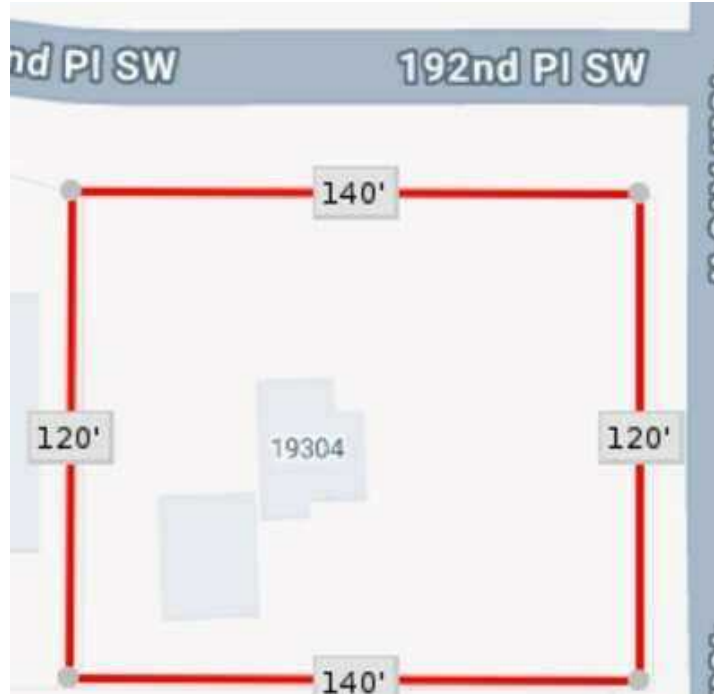


**COLDWELL BANKER
COMMERCIAL**
DANFORTH

SALE

LYNNWOOD LAND

19304 40th Ave W Lynnwood, WA 98036



Gretchen Hamm
206.972.1651
gretchen@gretahamm.com



**COLDWELL BANKER
COMMERCIAL**
DANFORTH