

[WEBSITE  
CLICK HERE!](#)



**TOX** COMMERCIAL  
REAL ESTATE

**LOT 2**  
0.548 ACRES

**LOT 3**  
2 ACRES

**LOT 4**  
0.987 ACRES



POST FALLS  
ID

**MILLWORX** COMMERCIAL LOTS | FOR SALE

Post Falls | Idaho



## CONTACT

**DANNY DAVIS**

208.691.6003

danny@tokcommercial.com



## HIGHLIGHTS

- Shovel ready commercial lots.
- Designated as "Downtown Post Falls."
- Located inside a federally approved Opportunity Zone.
- Future infrastructure projects include new on/off ramps off I-90, and new intersection at Seltice and 4th.
- Surrounded by 600+ existing housing units built in the last 5 years, with hundreds more in the pipeline.
- Adjacent to a brand new 151-unit Hyatt Hotel.

## DETAILS

LOT	SIZE	PRICE
2	0.548 AC	\$358,000
3	2 AC	\$1,488,445
4	0.99 AC	\$650,000





# AVAILABLE LOTS



LOOKING SOUTHEAST



LOOKING NORTH



# SITE PLAN MILLWORX

## SYNERGY

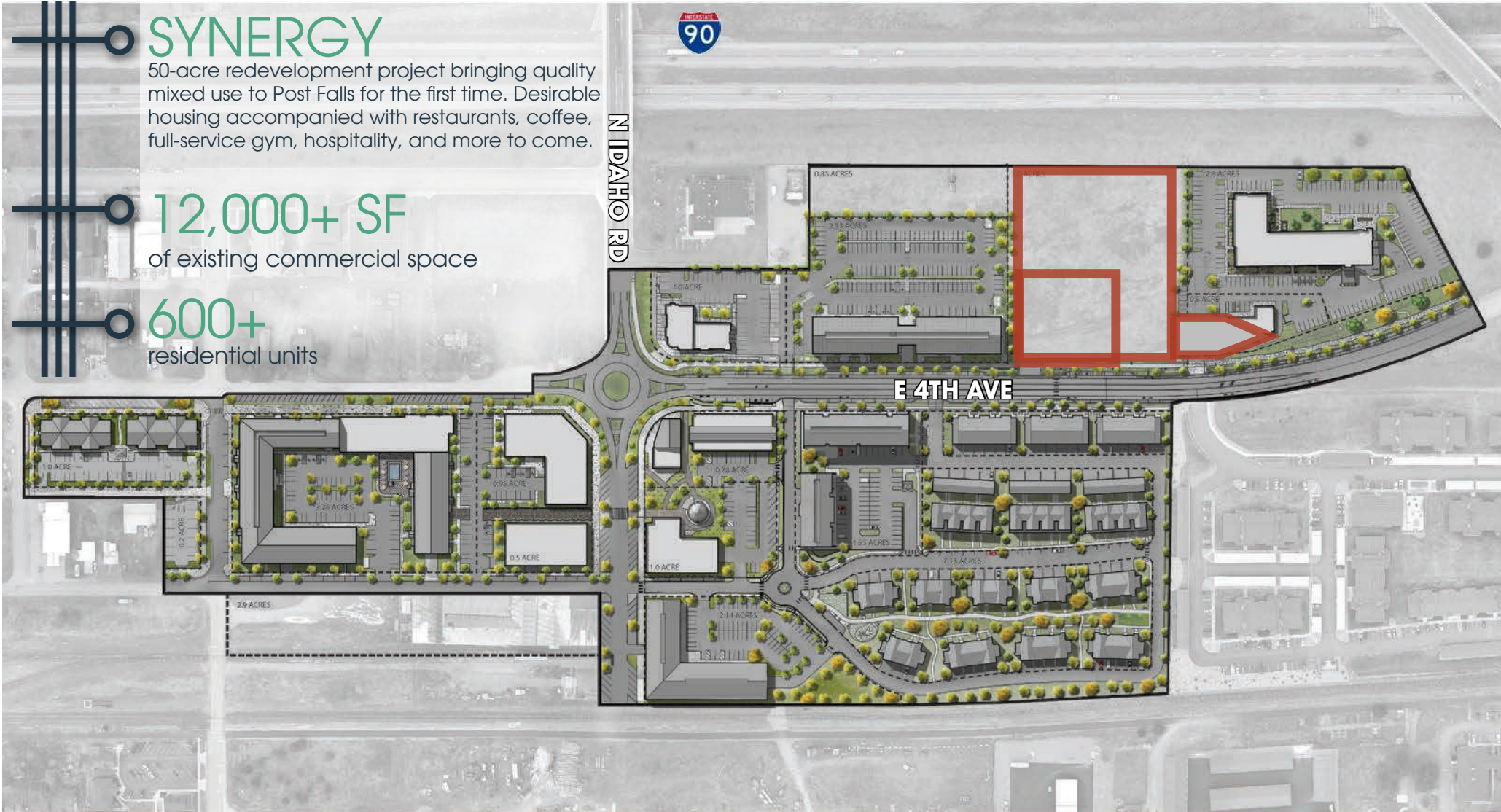
50-acre redevelopment project bringing quality mixed use to Post Falls for the first time. Desirable housing accompanied with restaurants, coffee, full-service gym, hospitality, and more to come.

12,000+ SF

of existing commercial space

600+

residential units





**SELCTICE WAY**

**29,797 VPD**



**LOT 3**  
2 ACRES

**HYATT**

**1,406 VPD**

**E 4TH AVE**

**KINDRED & CO**

**NORTH YARDS**

**LOT 4**  
0.987 ACRES

**LOT 2**  
0.987 ACRES

**14,891 VPD**

**MILLSITE REDEVELOPMENT**

**WOODLAND MEADOWS**  
330 UNITS

THIS PROPERTY IS EXCLUSIVELY MARKETED BY TOK INLAND NORTHWEST LLC DBA TOK COMMERCIAL  
This information was obtained from sources believed reliable but cannot be guaranteed. Any opinions or estimates are used for example only.