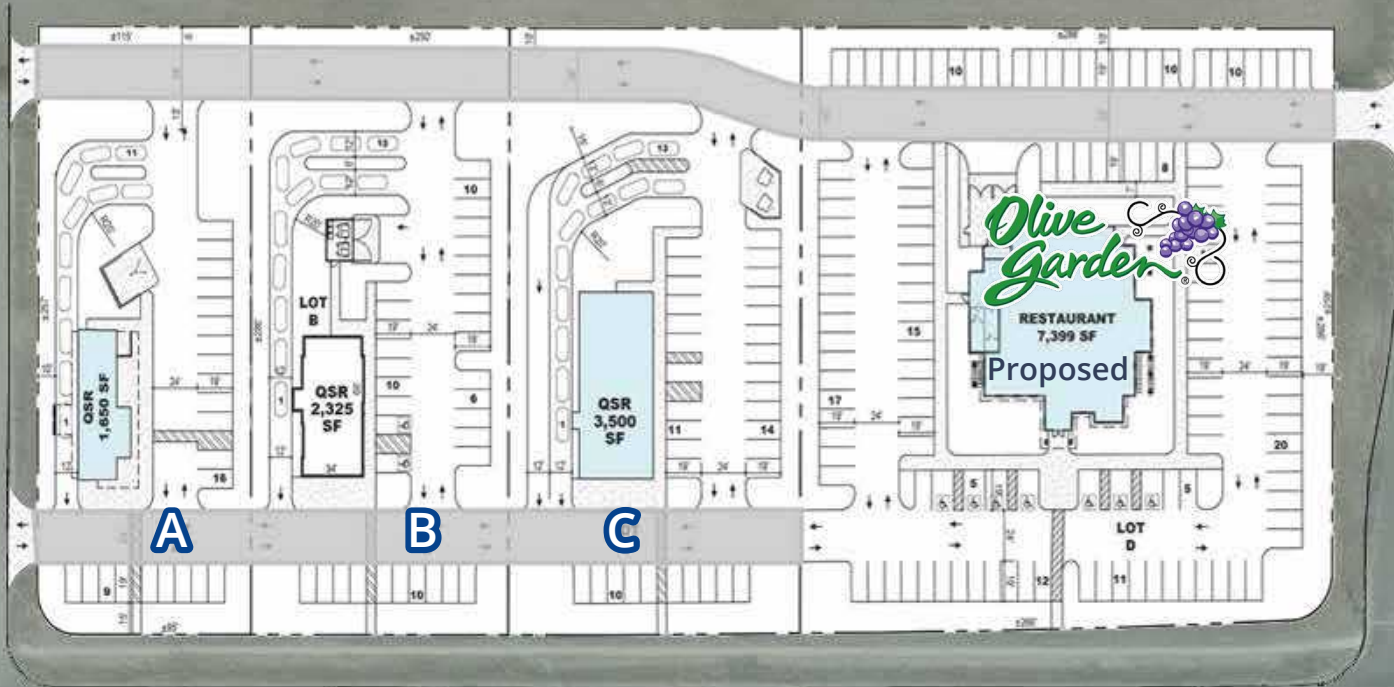




Tamana Drive



Mikan Drive

2.06 AC
For Sale

University Boulevard

Site Plan - Conceptual

For Ground Lease
or For Sale

University Boulevard &
Mikan Drive, Rexburg, ID

Highlights

- Pads located between Chipotle and proposed Olive Garden
- Easy access
- Growth area
- Ground lease or purchase
- Main access road to LDS temple
- First Rexburg exit to BYU Idaho
- Facing University Boulevard
- Call agents for pricing



2043 E Center Street
Pocatello, Idaho 83201
208 951 2100
colliers.com/idaho

Don Zebe
208 403 1973
don.zebe@colliers.com

Mike Zebe
208 705 6453
mike.zebe@colliers.com

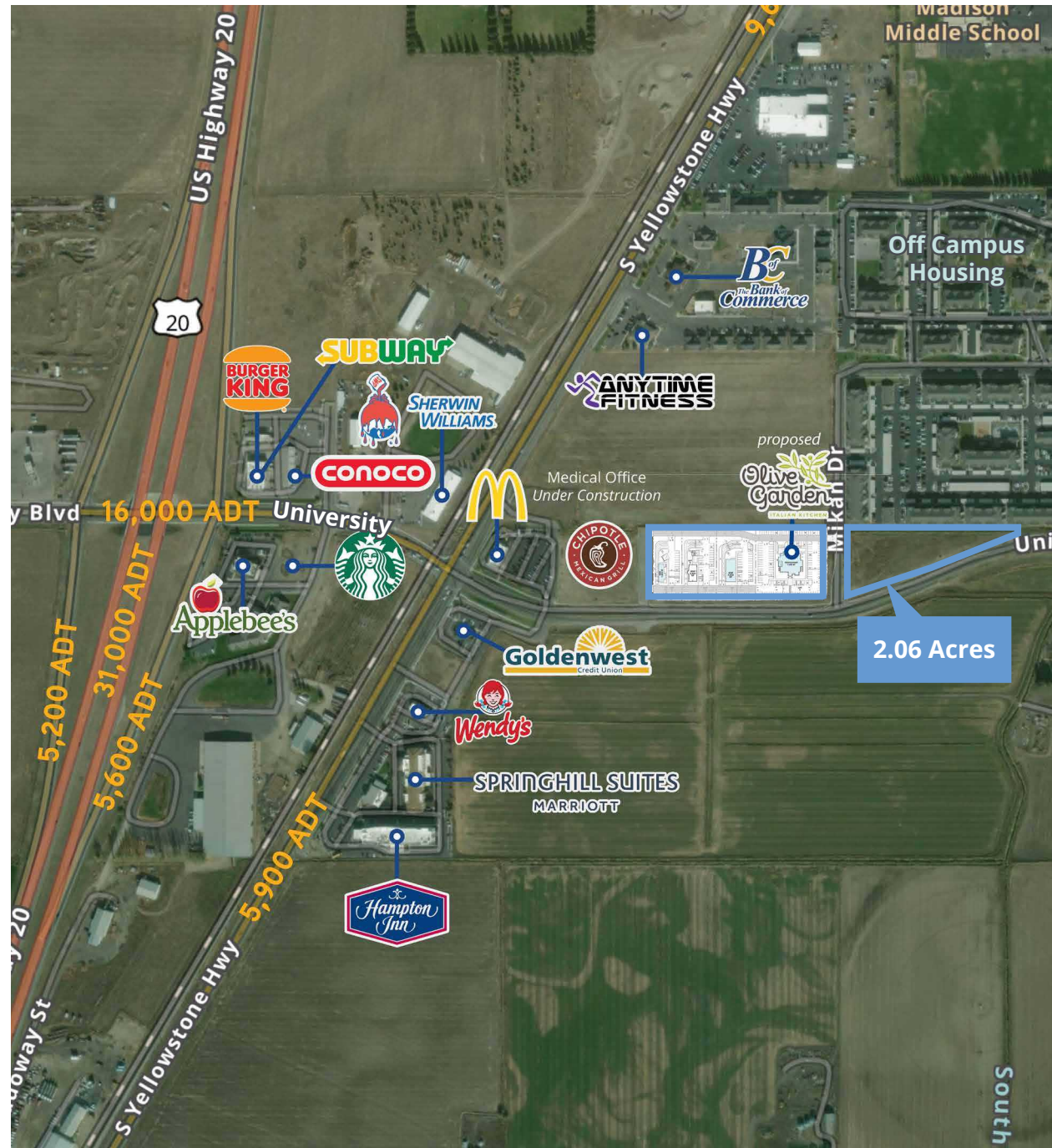
Jared Zebe
208 709 7311
jared.zebe@colliers.com

Property Overview

Property Type	Commercial/Retail
Land Size	Pad A - 0.76 Acres Pad B - 0.92 Acres Pad C - 1.04 Acres 2.06 Acres
Location	Rexburg, Idaho: Mikan Drive & University Blvd; First Rexburg Exit
Parcel No.	APN(s) 0010090, 0010071, 0010071, 0010090
Zoning	Commercial
Price	Call Agent

Demos

	1 Miles	3 Miles	5 Miles
Population			
2024 Estimated	11,183	42,871	49,685
2029 Projected	11,292	43,816	51,461
Households			
2024 Estimated	3,602	10,345	12,213
2029 Projected	3,816	11,157	13,344
Income			
2024 Average HH	\$44,338	\$71,386	\$75,543
2024 Median HH	\$34,332	\$48,867	\$53,562



Property Aerial



Brigham Young University-Idaho

LDS Temple

Off Campus Housing

Olive Garden (Proposed)

Site

Pads A, B, C Available

CHEVROLET

ANYTIME FITNESS

S Yellowstone Hwy

Medical Office Under Construction

McDonald's

CHIPOTLE MEXICAN GRILL

Goldenwest CREDIT UNION

University Blvd

Wendy's

SPRINGHILL SUITES BY MARRIOTT

CONOCO

SUBWAY

BURGER KING

To US Highway 20

Starbucks

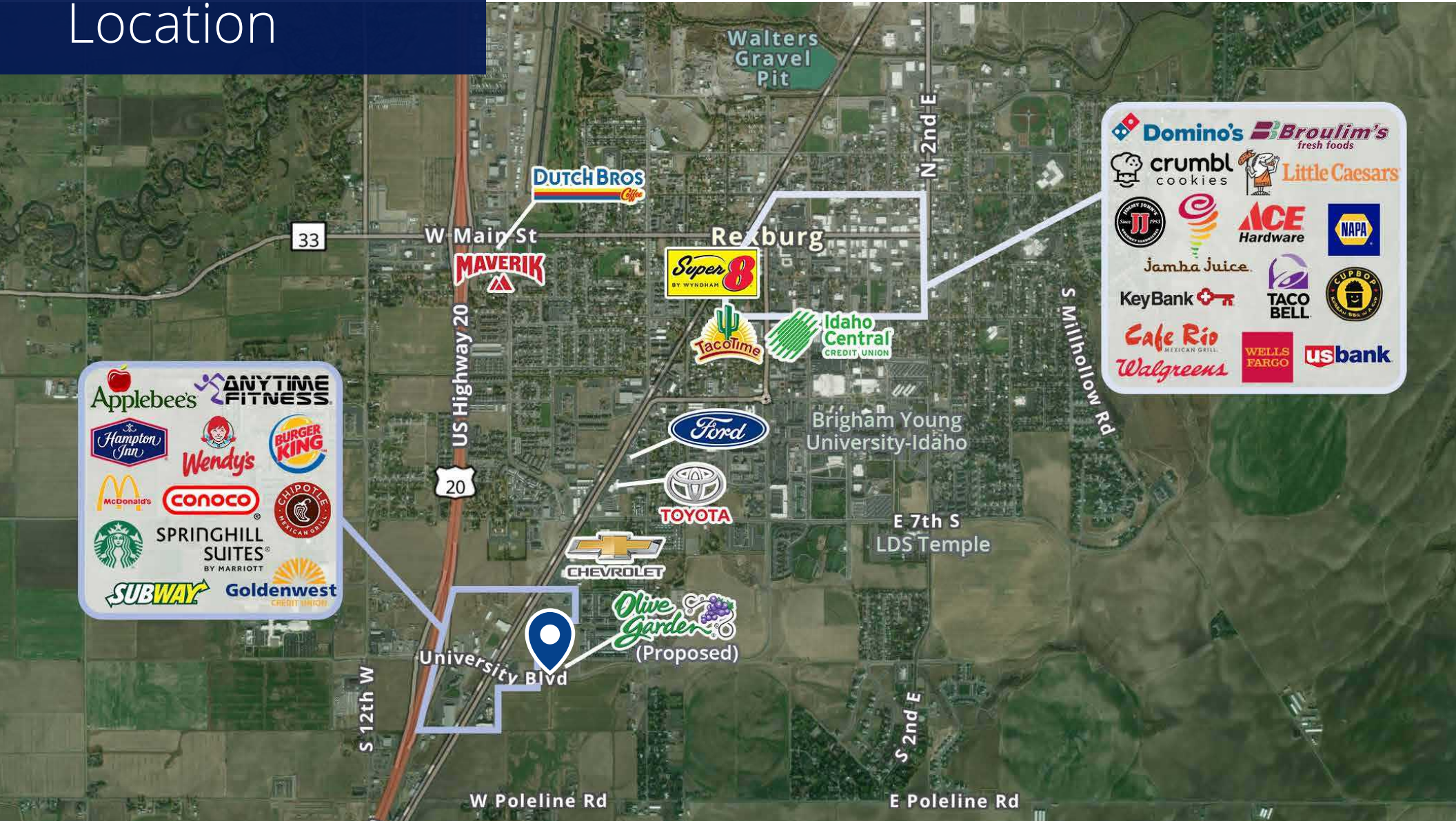
Applebee's

American BY WYNDHAM

Location

Google Map

Street View



2043 E Center Street
Pocatello, Idaho 83201
208 951 2100
colliers.com/idaho

This document has been prepared by Colliers for advertising and general information only. Colliers makes no guarantees, representations or warranties of any kind, expressed or implied, regarding the information including, but not limited to, warranties of content, accuracy and reliability. Any interested party should undertake their own inquiries as to the accuracy of the information. Colliers excludes unequivocally all inferred or implied terms, conditions and warranties arising out of this document and excludes all liability for loss and damages arising there from. This publication is the copyrighted property of Colliers and/or its licensor(s). © 2024. All rights reserved. This communication is not intended to cause or induce breach of an existing listing agreement. Colliers Portneuf Valley, LLC.