

FOR SALE

GIG HARBOR PAD SITES

2 Gig Harbor Pad sites Available for Sale

12701 & 12709 GOODNOUGH DRIVE NW
GIG HARBOR, WA

12701 GOODNOUGH

12709 GOODNOUGH

GOODNOUGH DR NW

PURDY DR
BURNHAM DR



GIG HARBOR PAD SITES



LOCATED BY
HENDERSON BAY



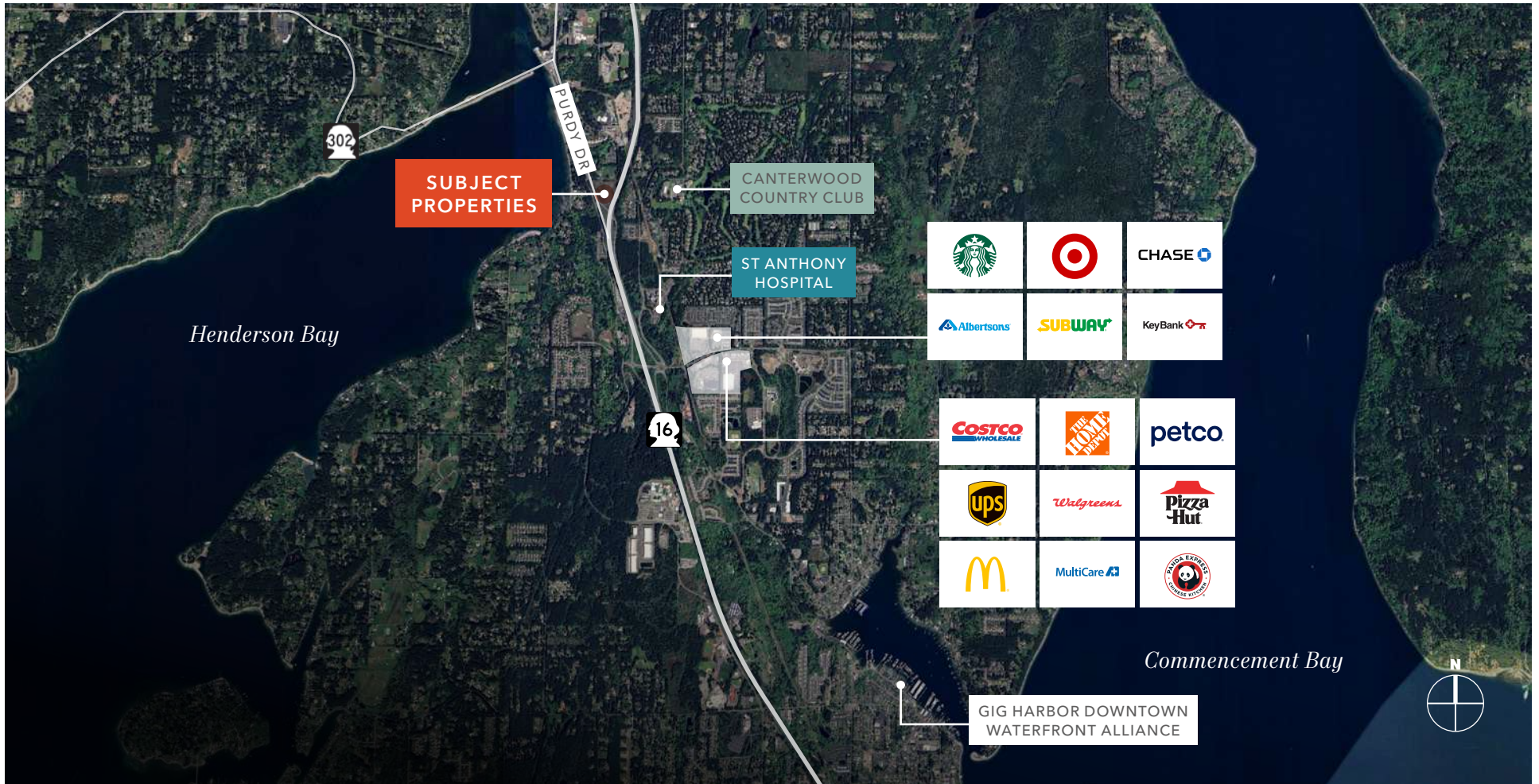
EASY ACCESS TO
HIGHWAY 16



5 MINUTES TO
RETAIL STORES



8 MINUTES TO
GIG HARBOR
DOWNTOWN





12701 GOODNOUGH DR NW

TOTAL LAND SIZE	1.37 AC
SALE PRICE	\$995,000
PRICE/SF	\$16.65/SF
PARCEL NUMBER	0122255009

12709 GOODNOUGH DR NW

TOTAL LAND SIZE	1.16 AC
SALE PRICE	\$675,000
PRICE/SF	\$16.25/SF on usable
PARCEL NUMBER	0122255008

Two parcels available

Excellent Zoning, B-2 City of Gig Harbor

Incorporated City of Gig Harbor

48,000 CPD Highway 16

23,557 CPD Purdy Dr NW

12" water main

Geotechnical report complete

On-site sewer system solution

DEMOGRAPHICS

POPULATION

	1 Mile	3 Miles	5 Miles
2010 CENSUS	2,372	18,210	39,441
2020 CENSUS	2,755	22,689	46,422
2024 ESTIMATED	2,762	22,931	46,295
2029 PROJECTED	2,749	22,828	46,031

MEDIAN AGE & GENDER

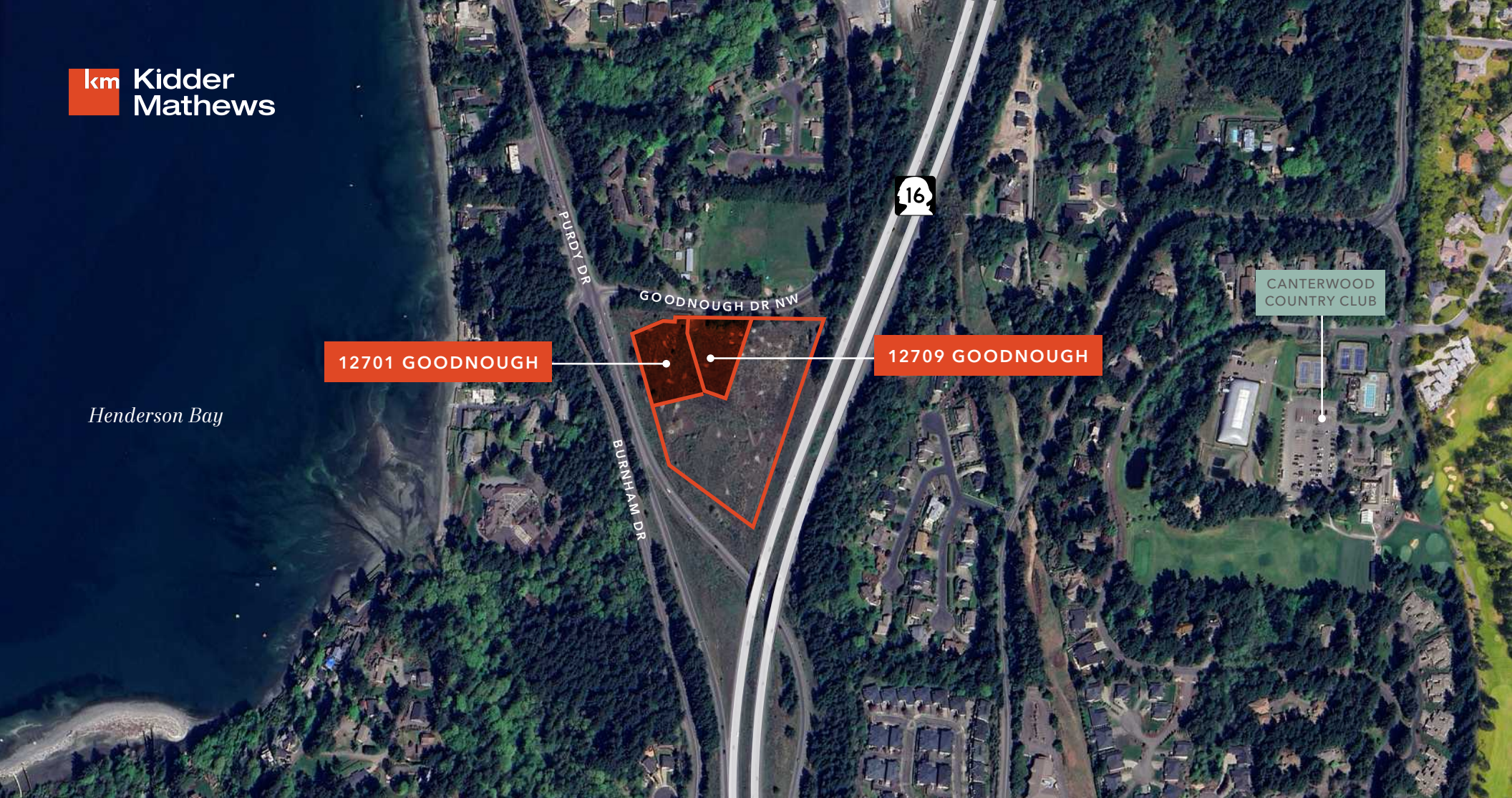
	1 Mile	3 Miles	5 Miles
MEDIAN AGE	45.7	44.6	45.5
% FEMALE	47.1%	49.6%	50.2%
% MALE	52.9%	50.4%	49.8%

HOUSEHOLD INCOME

	1 Mile	3 Miles	5 Miles
2024 MEDIAN	\$142,780	\$122,777	\$122,524
2029 MEDIAN PROJECTED	\$151,299	\$128,309	\$127,305
2024 AVERAGE	\$216,100	\$189,670	\$178,185
2029 AVERAGE PROJECTED	\$226,885	\$200,537	\$188,179

Data Source: ©2024, Sites USA





Henderson Bay

12701 GOODNOUGH

12709 GOODNOUGH

CANTERWOOD COUNTRY CLUB

Exclusively listed by

AMY HARDING
Kidder Mathews
406.260.5530
amy.harding@kidder.com

CRAMER FOSTER
WestCom Properties, Inc.
253.241.7244
cramer@westcomproperties.com

KIDDER.COM