



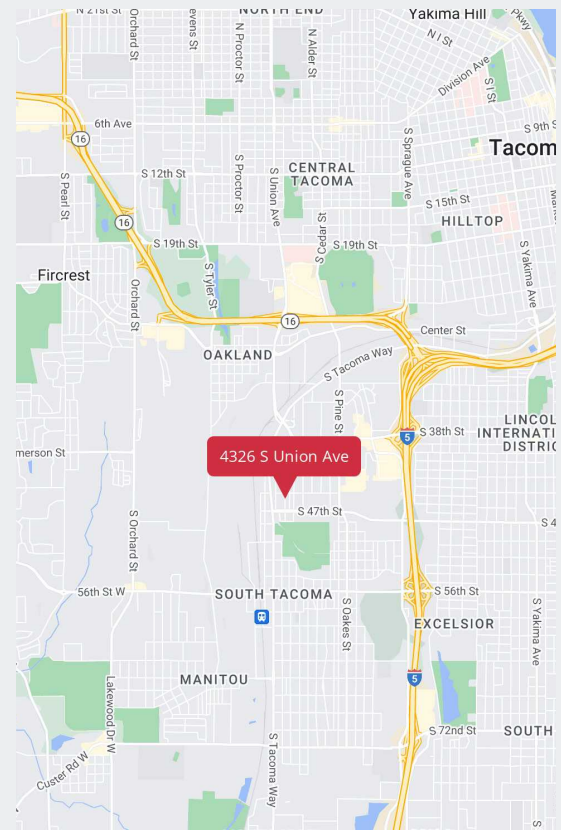
# For Sale

4326 South Union Ave, Tacoma, WA

*Fenced and secure Industrial Yard with direct access to South Tacoma Way and I-5*

## PROPERTY HIGHLIGHTS

- + 6,161 SF (0.14 Acres)
- + Utility connections available on Union
- + Direct access to South Tacoma Way & I-5
- + Fenced & secure paved lot
- + Truck scale on-site
- + Zoned: M1 - Light Industrial
- + Seller financing available
- + Price: \$350,000



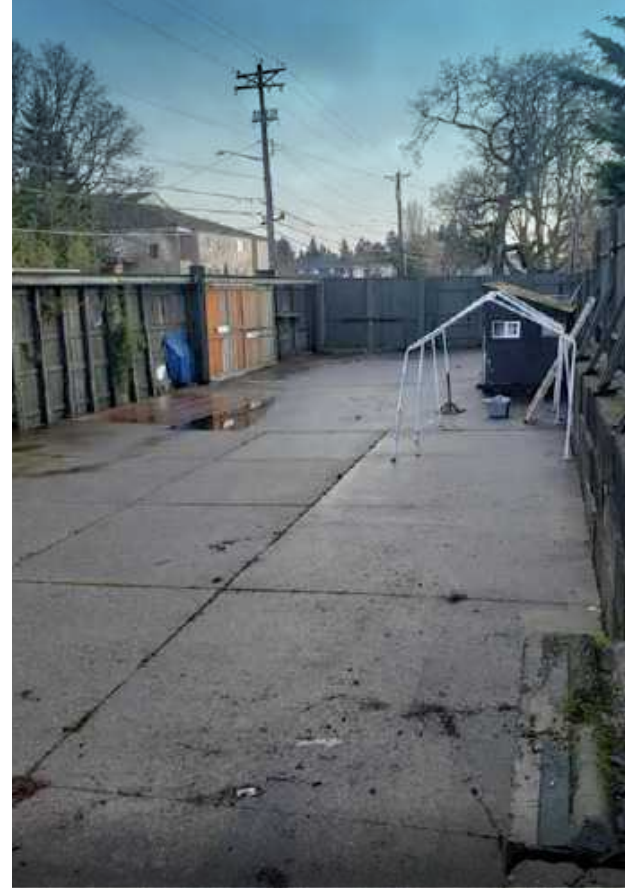
**KYLE SCHIPPER, SIOR**  
 Partner  
 +1 253 203 1320  
 kschipper@nai-psp.com

**DAVE DOUGLAS, SIOR, CCIM**  
 Partner  
 +1 253 203 1326  
 ddouglas@nai-psp.com



THE INFORMATION CONTAINED HEREIN HAS BEEN GIVEN TO US BY THE OWNER OF THE PROPERTY OR OTHER SOURCES WE DEEM RELIABLE, WE HAVE NO REASON TO DOUBT ITS ACCURACY, BUT WE DO NOT GUARANTEE IT. ALL INFORMATION SHOULD BE VERIFIED PRIOR TO PURCHASE OR LEASE.

[nai-psp.com](http://nai-psp.com)



**KYLE SCHIPPER, SIOR**  
Partner  
+1 253 203 1320  
kschipper@nai-psp.com

**DAVE DOUGLAS, SIOR, CCIM**  
Partner  
+1 253 203 1326  
ddouglas@nai-psp.com

