

For Sale or Lease

# Centralia Northpark One

3709 NORTHPARK DRIVE, CENTRALIA, WA



**WILL SCHMIDT**  
206 794 0421  
wschmidt@nai-psp.com

**KYLE SCHIPPER, SIOR**  
253 203 1320  
kschipper@nai-psp.com

**NAI** Puget Sound  
Properties



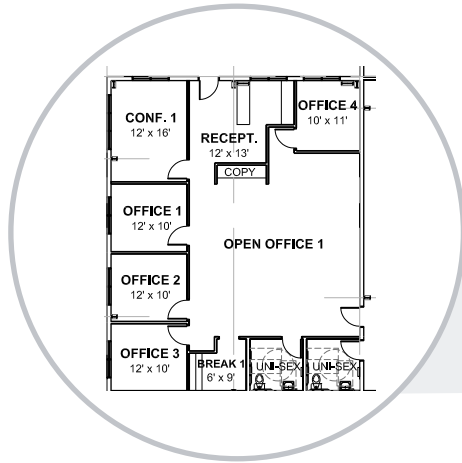
# Sale & Lease Summary

NAI Puget Sound Properties is pleased to offer the opportunity to lease or buy Centralia Northpark One. Located just off of I-5, it's the perfect midpoint for your Industrial Warehouse needs.



<b>ADDRESS</b>	3709 Northpark Drive Centralia, WA
<b>PARCEL NUMBER</b>	024005001001
<b>RENTABLE AREA</b>	± 43,250 - 107,125 SF
<b>ZONING</b>	PMP - Heavy Industrial, allows for a wide range of uses
<b>DELIVERY</b>	March 1, 2025
<b>PRICE</b>	Call broker for rates

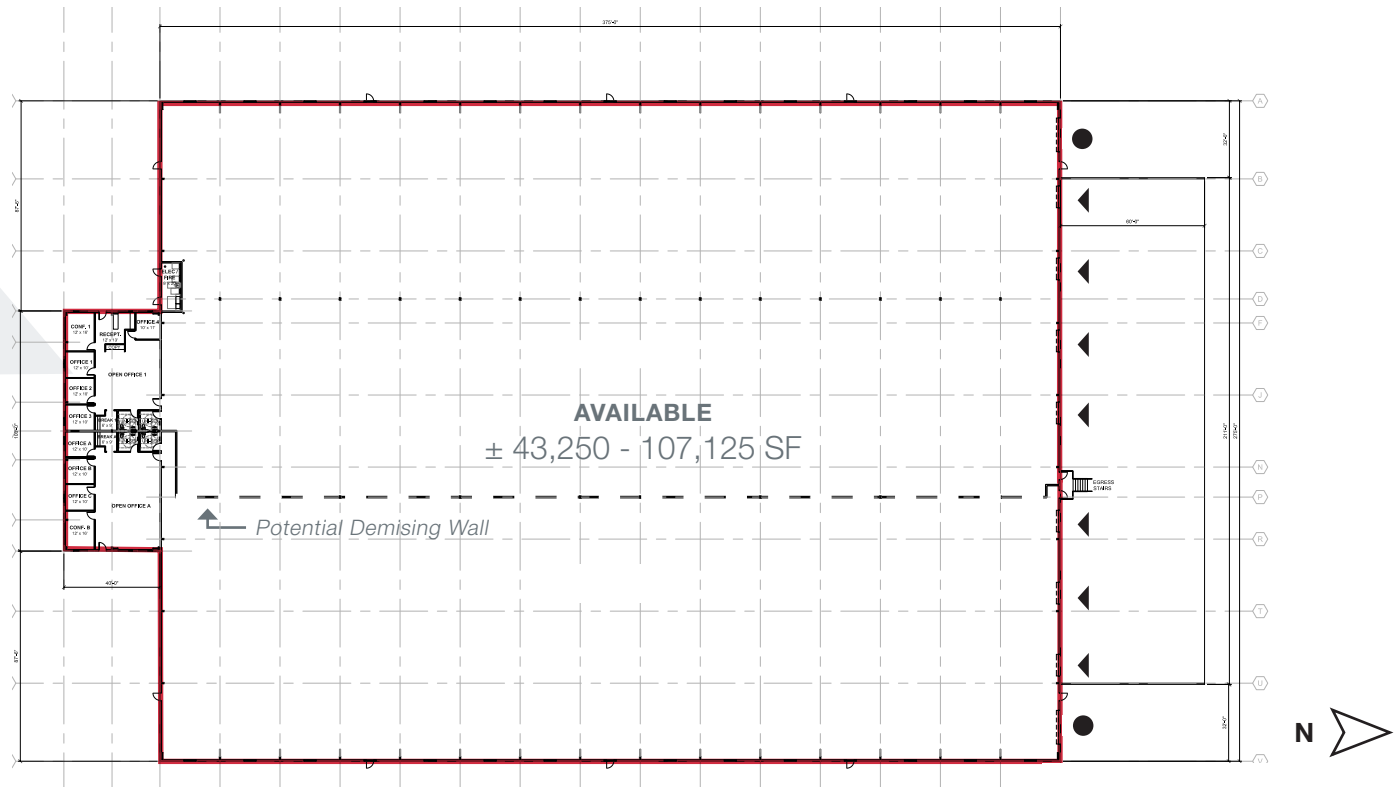


# Conceptual Floor Plan



## KEY

-  Dock Door
-  Grade Level Door
-  Available
-  Demising wall



Foreign Trade Zone designation



Business friendly city



Ideal Midpoint between Seattle & Portland

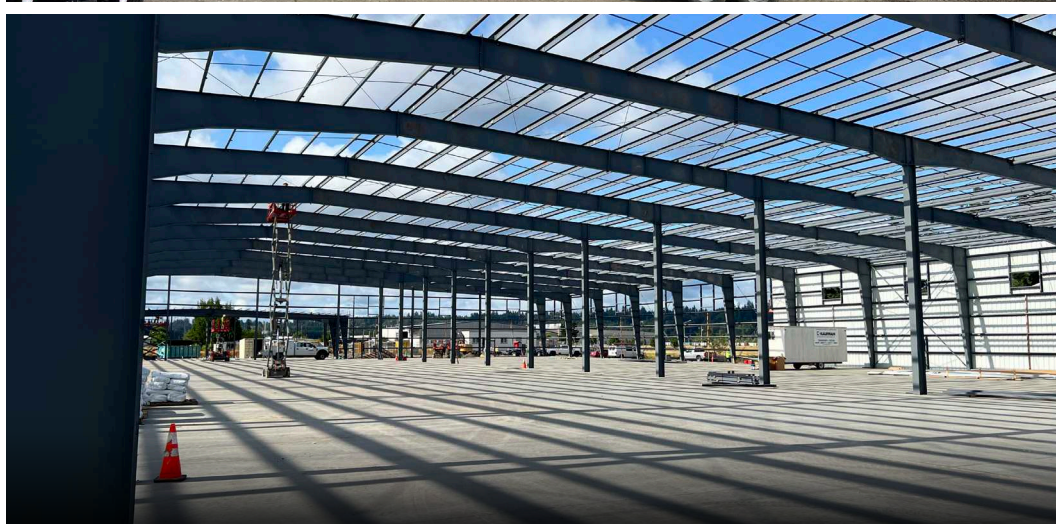
## Highlights

- + 107,125 SF (demisable 43,250 SF)
- + 4,000 SF Office
- + 7 Dock Doors (potential to add more)
- + 2 Grade Level Doors (14' x 14')
- + 24' Clear Height
- + Heavy Power
- + Additional trailer parking available



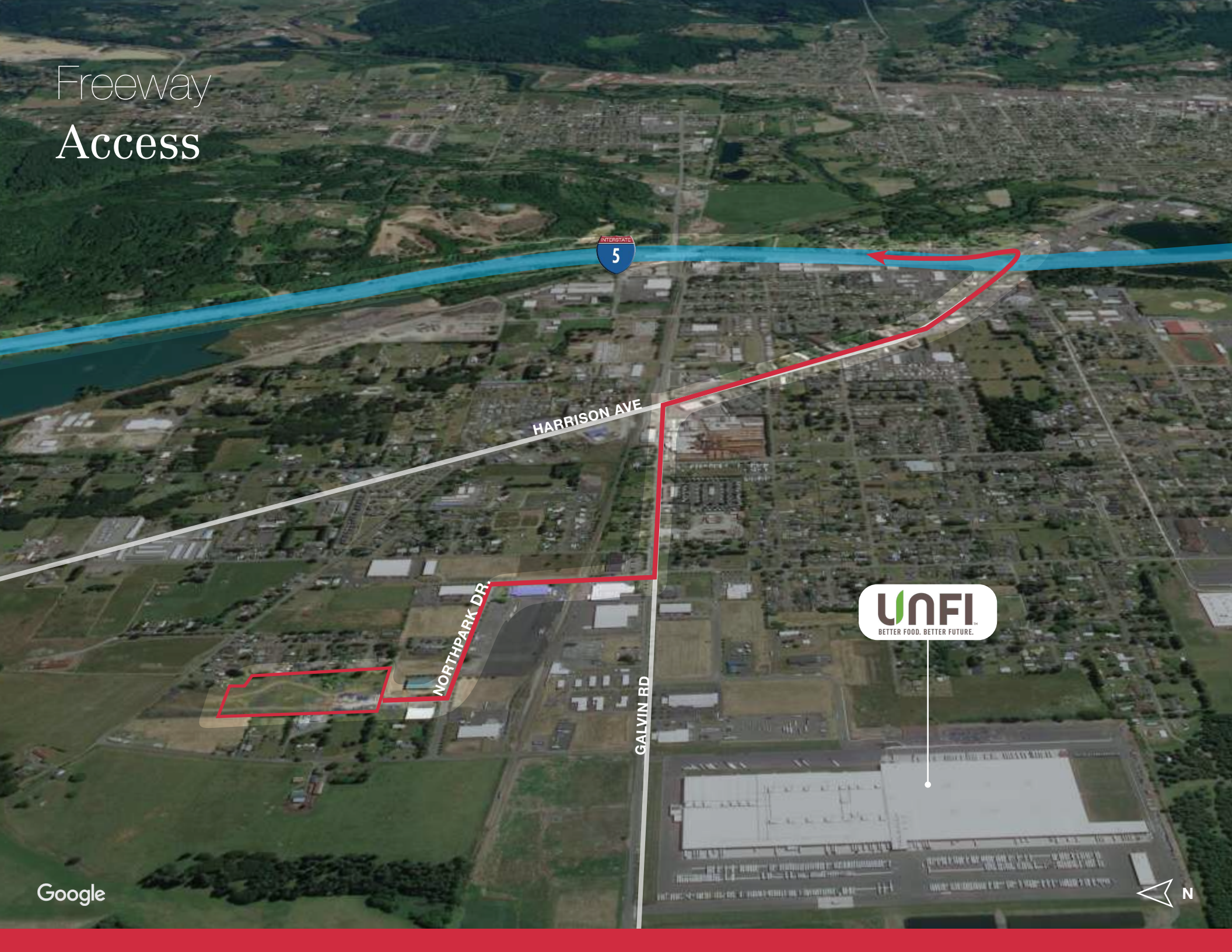
*Construction is underway  
at Centralia Northpark One!*

Photos taken July 25, 2024





# Freeway Access



HARRISON AVE

NORTH PARK DR.

GALVIN RD



# Connected Location



## PROXIMITY TO

- SEATTLE | 84 MILES  
**1.5** HOURS  
Spokane
- VANCOUVER BC | 225 MILES  
**4** HOURS
- PORTLAND | 93 MILES  
**1.5** HOURS
- BOISE | 514 MILES  
**7.5** HOURS

- 1 hour
- 2 hours
- 5 hours

BOISE



# Centralia Northpark One

3709 NORTHPARK DRIVE, CENTRALIA, WA



EXCLUSIVELY LISTED BY:

**WILL SCHMIDT**  
206 794 0421  
wschmidt@nai-pp.com

**KYLE SCHIPPER, SIOR**  
253 203 1320  
kschipper@nai-pp.com

**NAI** Puget Sound  
Properties

THE INFORMATION CONTAINED HEREIN HAS BEEN GIVEN TO US BY THE OWNER OF THE PROPERTY OR OTHER SOURCES WE DEEM RELIABLE. WE HAVE NO REASON TO DOUBT ITS ACCURACY, BUT WE DO NOT GUARANTEE IT. ALL INFORMATION SHOULD BE VERIFIED PRIOR TO PURCHASE OR LEASE.  
G:\SHARED\DRIVES\ADMIN\TEAM\MARKETING\FLYERS\OUTSIDE\MARKET\COUNTY\LEWIS\COUNTY\3709NORTHPARKDR\CUSTOMFLYER-WSKS\3705NORTHPARKDR\WSKS