

VIRGINIA MASON
FRANCISCAN HEALTH

2520

CHERRY AVE

2520 Cherry Ave
929 Hickory Street

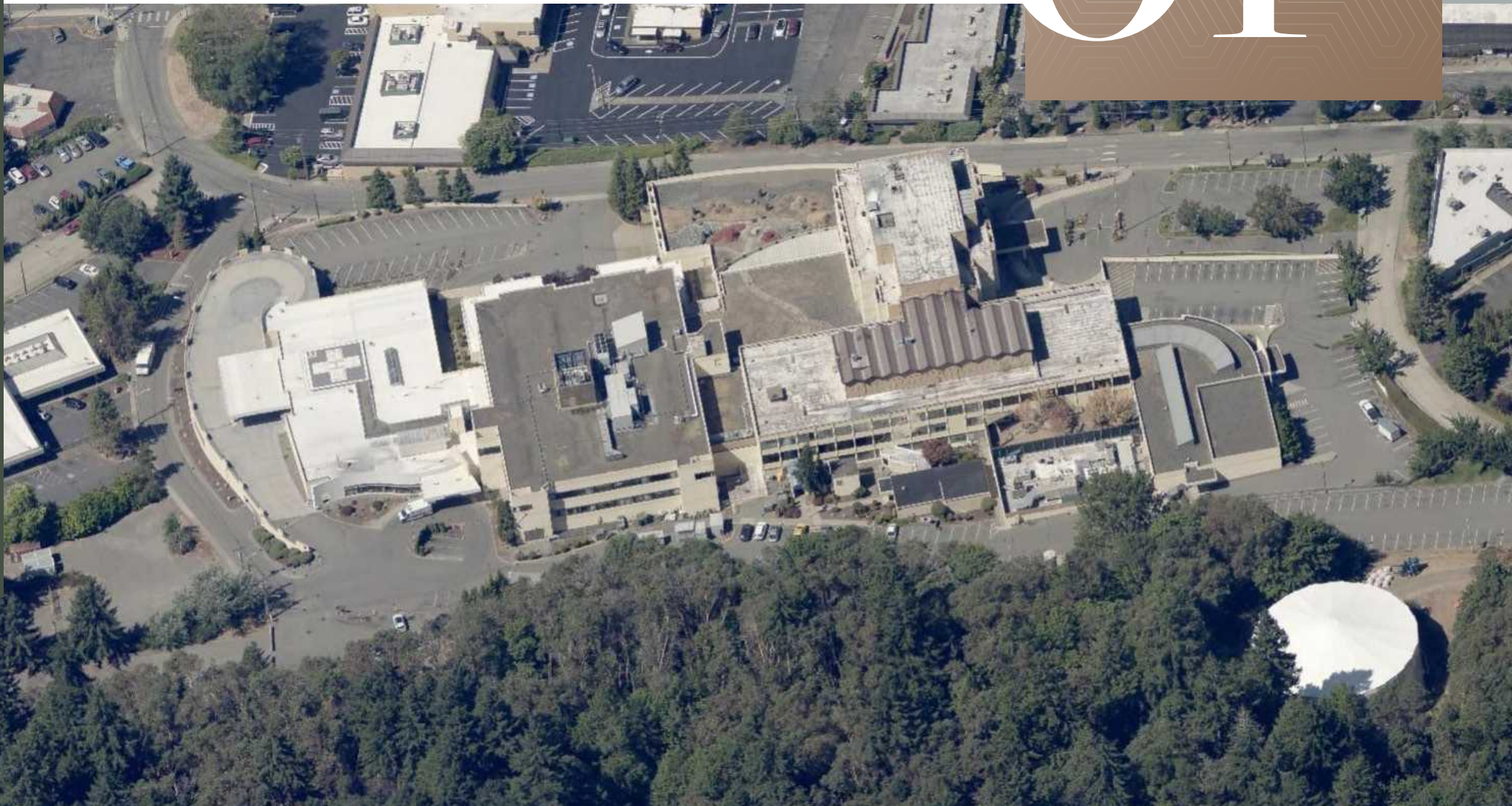
Bremerton, WA



CBRE

THE
OFFERING

01

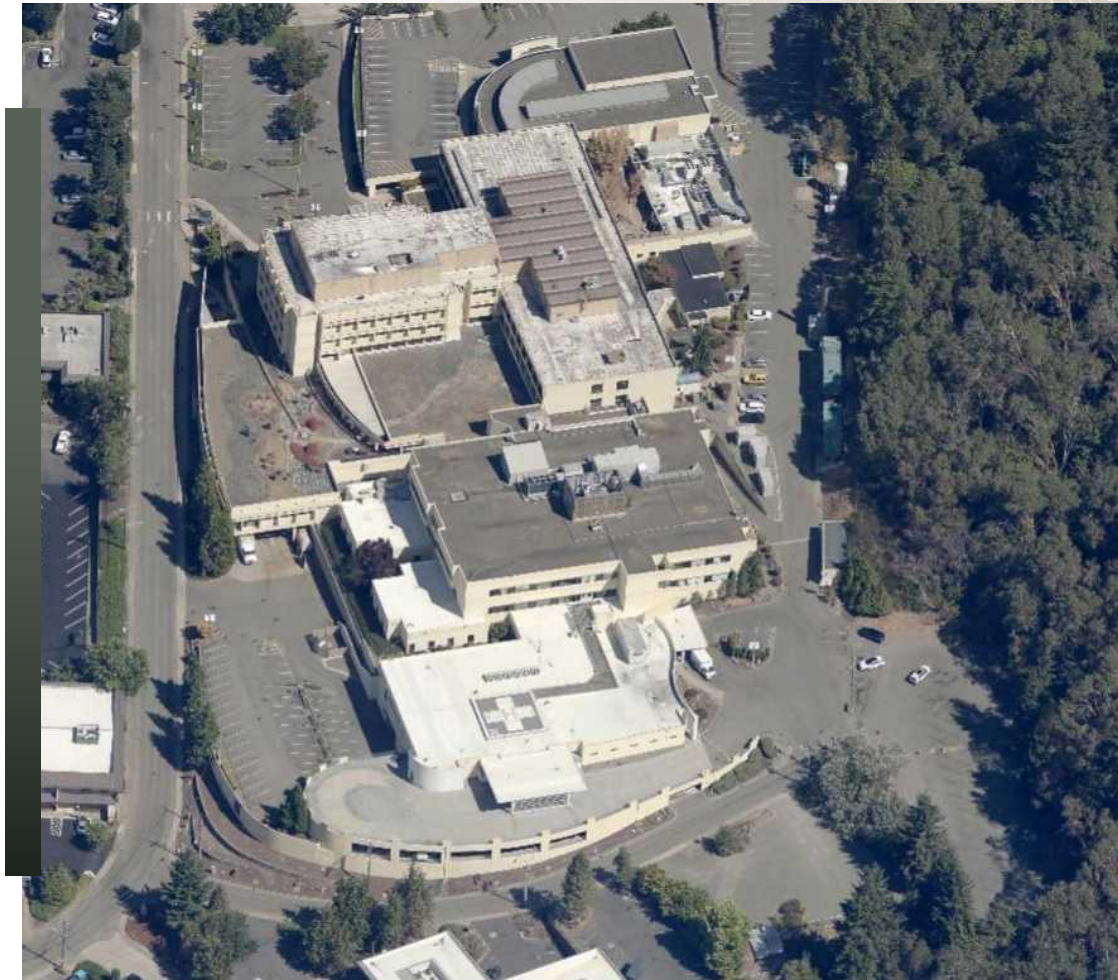


The offering consists of two parcels with a total lot size equal to roughly 334,541 SF / 7.68 AC.

The two parcels, 2520 Cherry Ave and 929 Hickory St, were previously Harrison Medical Center, a now demolished 261,462 SF hospital and a former parking lot adjacent to it. These parcels are now are zoned under the Harrison Heights Subarea Plan (HHSAP), a special Multi-Use Zone (MU) allowing for a range of commercial, office, residential, and retail uses.

PROPERTY OVERVIEW

Addresses / Parcel #	2520 Cherry Ave (#3967-004-001-0402) 929 Hickory St (#3967-001-016-0005)
Zoning	Harrison Heights Subarea Plan Multi-Use (HHSAP MU)
Size (Land)	334,541 SF / 7.68 AC



Property shown in images currently being demolished. Property will be delivered as raw land.

Formerly Harrison Medical Center



HOSPITAL
DEMOLISHED IN 2024



HARRISON HEIGHTS
SUBAREA PLAN



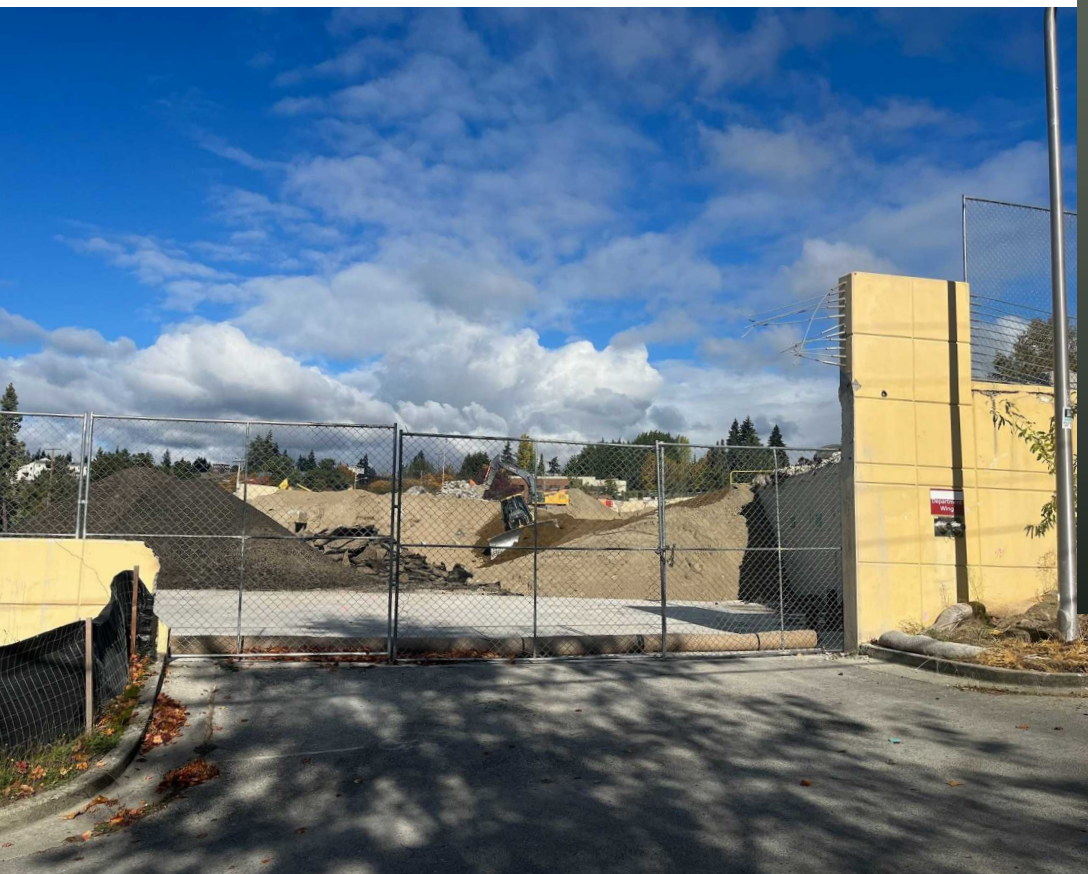
FORMER HOSPITAL



929
HICKORY STREET

2520
CHERRY AVE

CURRENT PROPERTY STATUS



VIRGINIA MASON
FRANCISCAN HEALTH

2520

C H E R R Y A V E

2520 Cherry Ave
929 Hickory Street

Bremerton, WA

© 2024 CBRE, Inc. All rights reserved. This information has been obtained from sources believed reliable but has not been verified for accuracy or completeness. CBRE, Inc. makes no guarantee, representation or warranty and accepts no responsibility or liability as to the accuracy, completeness, or reliability of the information contained herein. You should conduct a careful, independent investigation of the property and verify all information. Any reliance on this information is solely at your own risk. CBRE and the CBRE logo are service marks of CBRE, Inc. All other marks displayed on this document are the property of their respective owners, and the use of such marks does not imply any affiliation with or endorsement of CBRE. Photos herein are the property of their respective owners. Use of these images without the express written consent of the owner is prohibited.

MARCUS YAMAMOTO
Senior Vice President
+1 206 292 6062
marcus.yamamoto@cbre.com

KATIE SMITH
Senior Associate
+1 206 292 6012
katie.m.smith@cbre.com

MULTIFAMILY CONTACT

KYLE YAMAMOTO
Senior Vice President
+1 206 292 6064
kyle.yamamoto@cbre.com

CBRE