

FOR SALE

FIVE 1-5 DEVELOPMENT LAND AVAILABLE

*+8.06 acre commercial zoned land
suitable for multiple uses.*

4707 20TH ST E, FIFE WA 98424



20TH ST E

KIDDER.COM



km Kidder
Mathews

4707 20TH ST E, FIFE, WA

FOR SALE

*Raw Land along I-5 in Fife,
Washington Now Available for
Commercial Development!*

±351,093 SF/8.06 AC

Regional Commercial (RC) Zoning

Ownership took site through entitlements

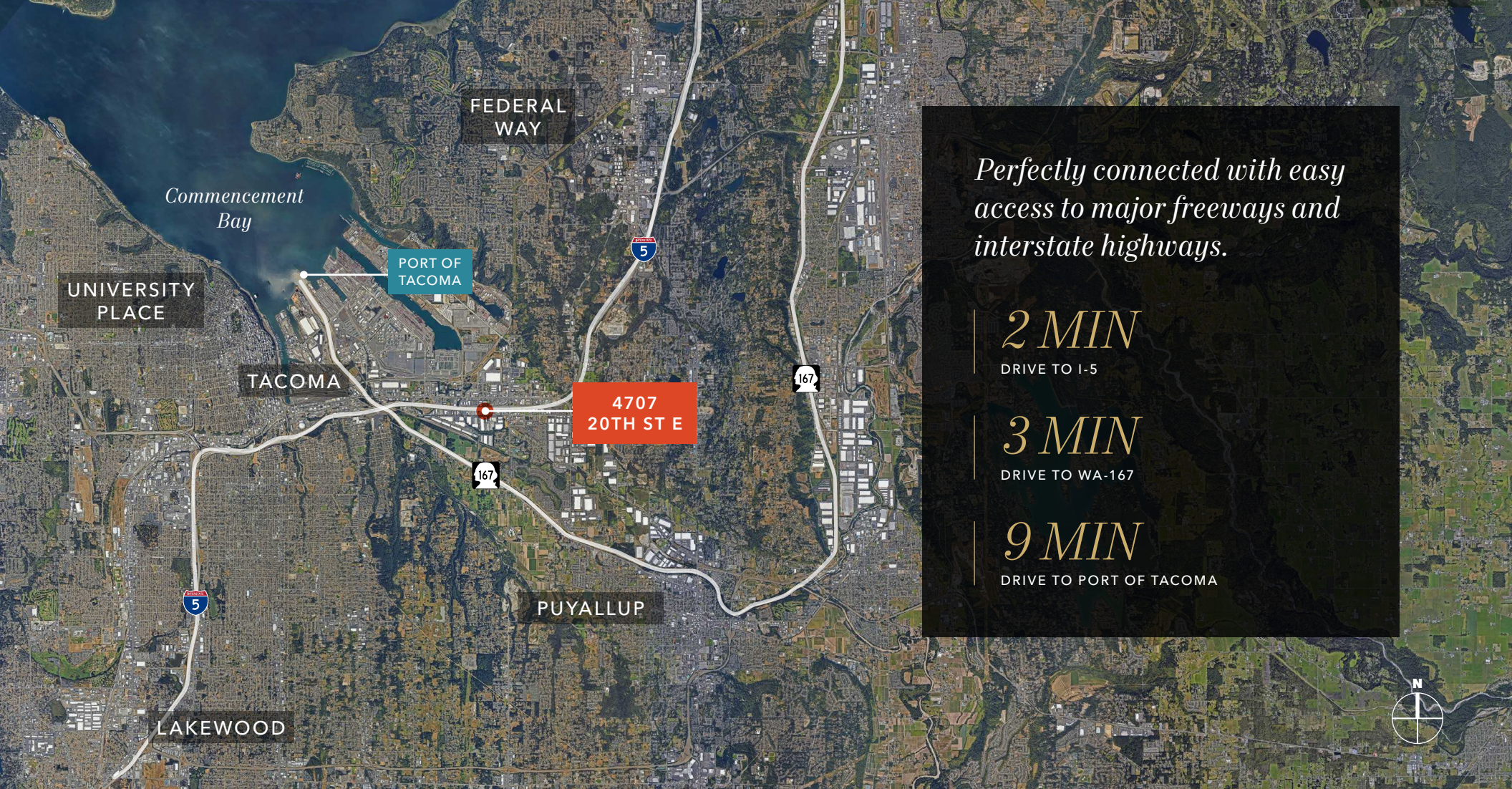
All Due Diligence Material Available

Pre App Notes Available

±8.06
ACRES AVAILABLE

CALL
BROKER FOR PRICING





Perfectly connected with easy access to major freeways and interstate highways.

2 MIN

DRIVE TO I-5

3 MIN

DRIVE TO WA-167

9 MIN

DRIVE TO PORT OF TACOMA

4707 20TH ST E

For more information on this property, please contact

MATT MURRAY

206.248.6541

matt.murray@kidder.com

KIDDER.COM

This information supplied herein is from sources we deem reliable. It is provided without any representation, warranty, or guarantee, expressed or implied as to its accuracy. Prospective Buyer or Tenant should conduct an independent investigation and verification of all matters deemed to be material, including, but not limited to, statements of income and expenses. Consult your attorney, accountant, or other professional advisor. All Kidder Mathews designs are the sole property of Kidder Mathews. Branded materials and layouts are not authorized for use by any other firm or person.

km Kidder Mathews