



For Sale/Lease

2218 112th Street East, Tacoma, WA

Fenced and secure industrial warehouse with direct access to 112th Street East and SR-512

PROPERTY HIGHLIGHTS

- + 37,897 SF (0.87 acres) total land area
- + 3,000 SF total building area: 2,400 SF shell + 600 SF mezzanine
- + Direct access to highway 512, 167, and I-5
- + Grade level loading
- + 18' ceiling height
- + Easy ingress and egress for vehicles and equipment
- + Mid-County Community Plan: Employment Corridor
- + Fantastic owner-user opportunity
- + **Call for pricing**

KYLE SCHIPPER, SIOR

Partner

+1 253 203 1320

kschipper@nai-psp.com

DAVE DOUGLAS, SIOR, CCIM

Partner

+1 253 203 1326

ddouglas@nai-psp.com



THE INFORMATION CONTAINED HEREIN HAS BEEN GIVEN TO US BY THE OWNER OF THE PROPERTY OR OTHER SOURCES WE DEEM RELIABLE, WE HAVE NO REASON TO DOUBT ITS ACCURACY, BUT WE DO NOT GUARANTEE IT. ALL INFORMATION SHOULD BE VERIFIED PRIOR TO PURCHASE OR LEASE.

nai-psp.com



112th St E

22nd Ave E

2218 112th St E

23rd Ave E

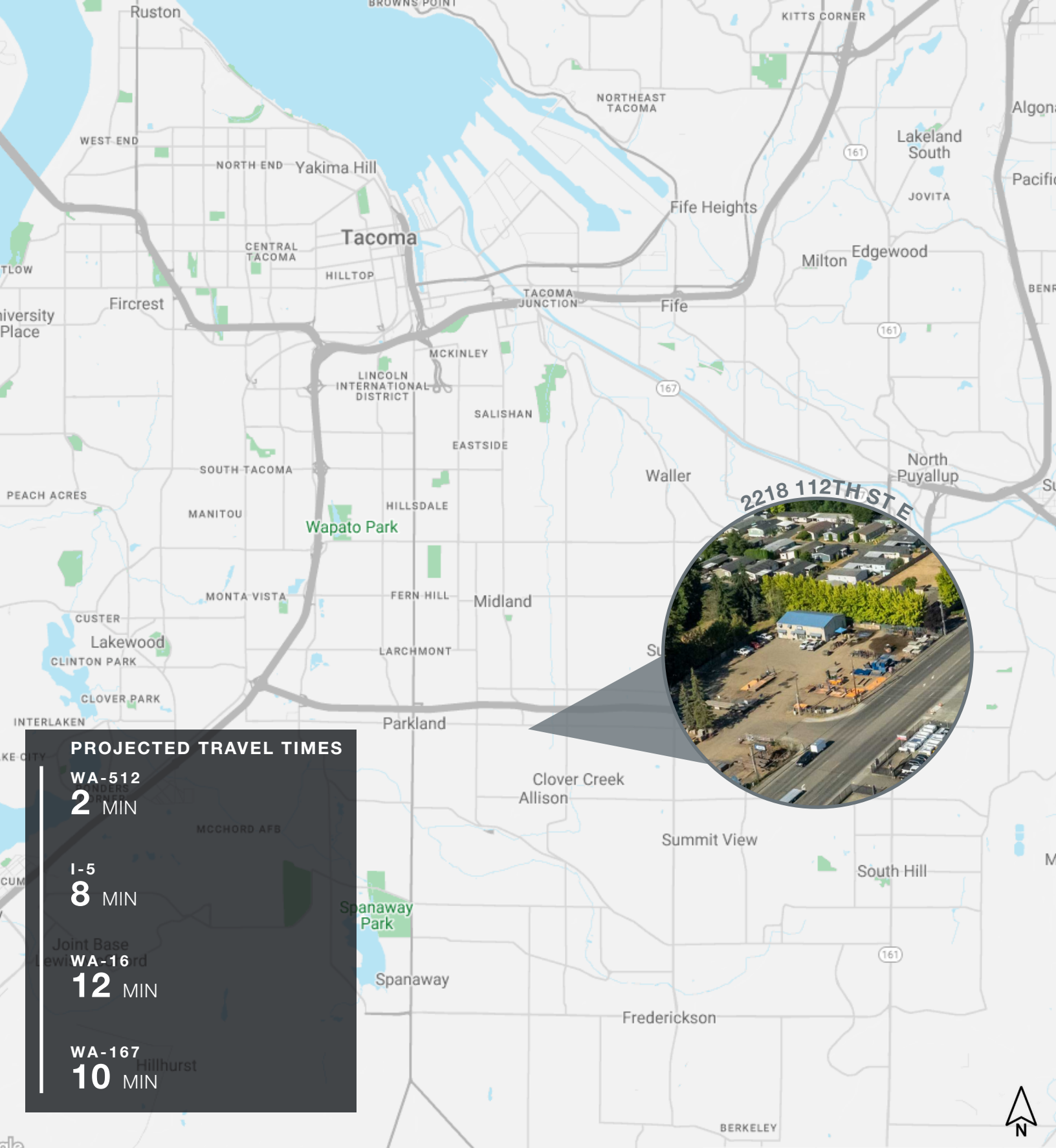
09/2024



KYLE SCHIPPER, SIOR
Partner
+1 253 203 1320
kschipper@nai-pp.com

DAVE DOUGLAS, SIOR, CCIM
Partner
+1 253 203 1326
ddouglas@nai-pp.com





2218 112TH ST E



PROJECTED TRAVEL TIMES

- WA-512
2 MIN
- I-5
8 MIN
- Joint Base Lewis-McChord
WA-16
12 MIN
- WA-167
10 MIN

KYLE SCHIPPER, SIOR
Partner
+1 253 203 1320
kschipper@nai-psp.com

DAVE DOUGLAS, SIOR, CCIM
Partner
+1 253 203 1326
ddouglas@nai-psp.com

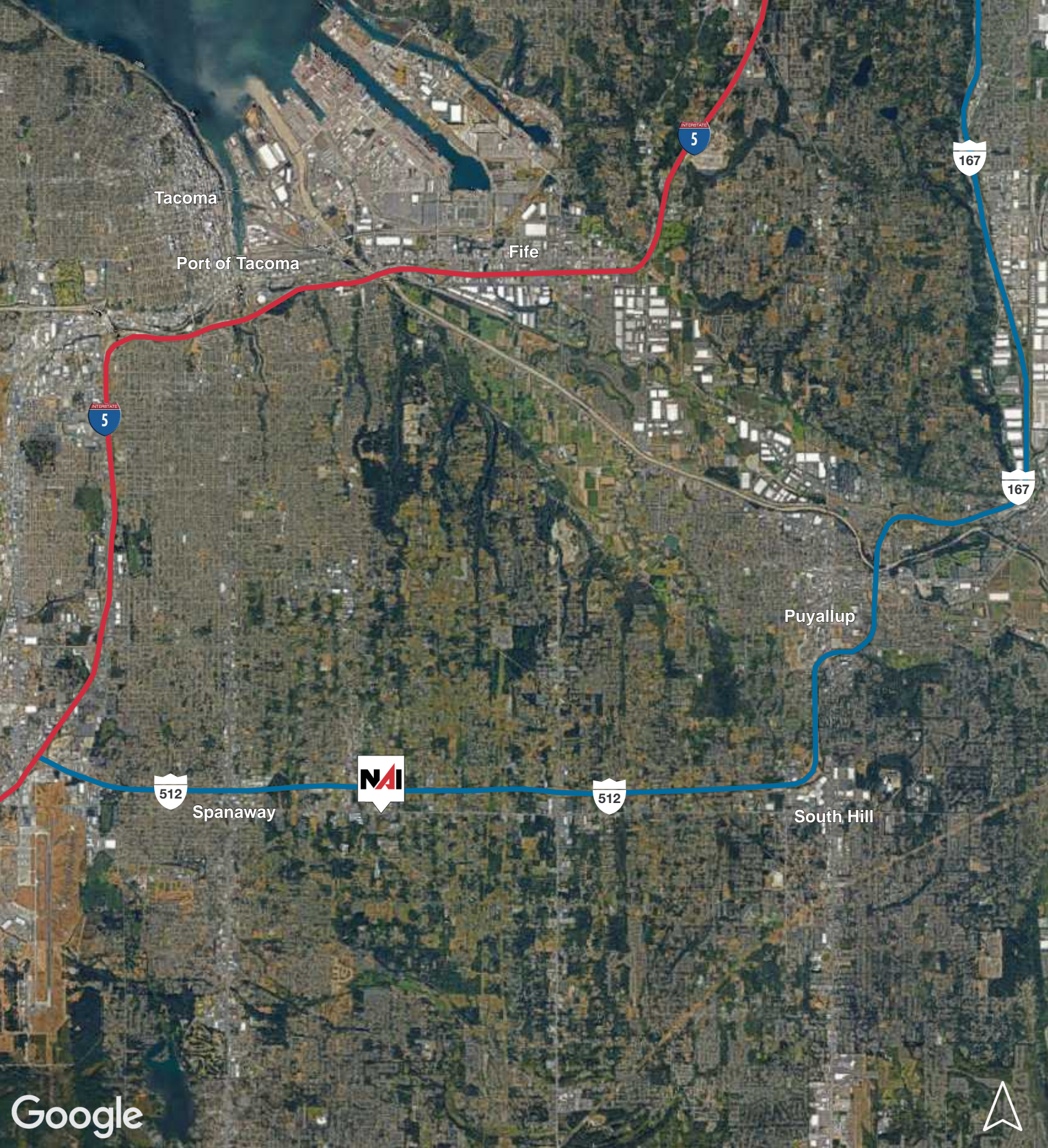




KYLE SCHIPPER, SIOR
Partner
+1 253 203 1320
kschipper@nai-ppsp.com

DAVE DOUGLAS, SIOR, CCIM
Partner
+1 253 203 1326
ddouglas@nai-ppsp.com





Tacoma

Port of Tacoma

Fife

Puyallup

Spanaway

South Hill



Google



KYLE SCHIPPER, SIOR
Partner
+1 253 203 1320
kschipper@nai-psp.com

DAVE DOUGLAS, SIOR, CCIM
Partner
+1 253 203 1326
ddouglas@nai-psp.com

