

# Mid I-5 Industrial Park

2700 Talley Way  
KELSO • WA



CLICK TO VIEW  
SITE VIDEO

EXIT 36



**1.185 MILLION SF ON I-5  
FOR LEASE OR SALE**

**CBRE**

Trammell Crow Company

MIDI-5INDUSTRIALPARK.COM

## BUILDING FEATURES:

- + ± 1,185,327 SF
- + 219 Dock Doors
- + Clear Height: 40'
- + Building Depth: 650'
- + 135' Truck Court
- + ±6,000 - 8,000 Amps of Electrical Service

## SITE FEATURES:

- + 18 acres of expansion land for:
  - + 225K SF of additional building (entitled)
  - + Yard area (allowed per code)
  - + Up to 475 additional trailer stalls
- + Fully securable
- + ±116 acres
- + 514 Auto Stalls
- + 351 Trailer Stalls
- + Water capacity of up to one million gallons per day
- + The Light Industrial zoning allows for multiple uses, such as:



Manufacturing & Processing



Commercial Moving & Storage



Recycling Center



Large Scale Retail Services & Sales



Industrial Facility



Junk Yard & Salvage



Vehicle Sales & Services



Wholesale Businesses

## TAX INCENTIVE

- + Possible 50% exemption from the state's portion of the retail sales or use tax paid on purchases and installation of material-handling and racking equipment. Please refer to the following link for further information.

[Tax Incentives: Warehouse remittance](#)

## Mid I-5 Industrial Park

2700 Talley Way  
K E L S O • W A

FUTURE POTENTIAL TO EXPAND OR ADDITIONAL SPACE FOR 475 TRAILER PARKING STALLS

Fully signaled intersection  
One way in,  
one way out





## KEY ATTRIBUTES TO THE LOCATION:

- + Immediate proximity & accessibility to I-5 on/off ramps
- + Strong Labor Market compared to other proposed developments in the I-5 Corridor
- + City of Kelso is business friendly
- + ±72,000 vehicles per day on I-5
- + Cities within estimated 11-hour drive time: SF Bay Area, Sacramento, Reno, Boise, Seattle, Vancouver BC

## LOCATION OVERVIEW

**36 MILES**

North of  
Portland, Oregon

**45 MILES**

North of  
Port of Portland CBD  
(Terminal 6)

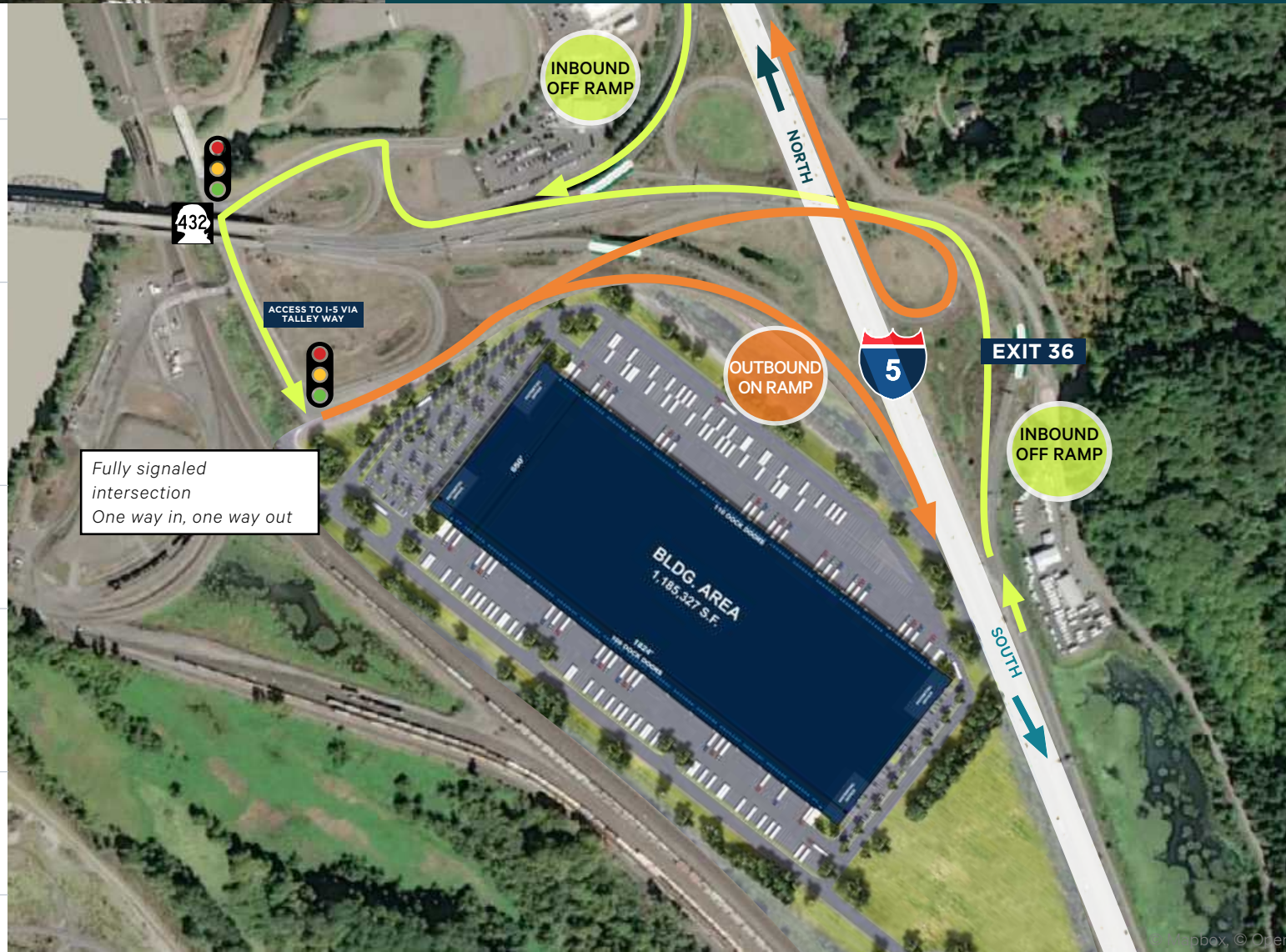
**102 MILES**

South of Port of Tacoma

**131 MILES**

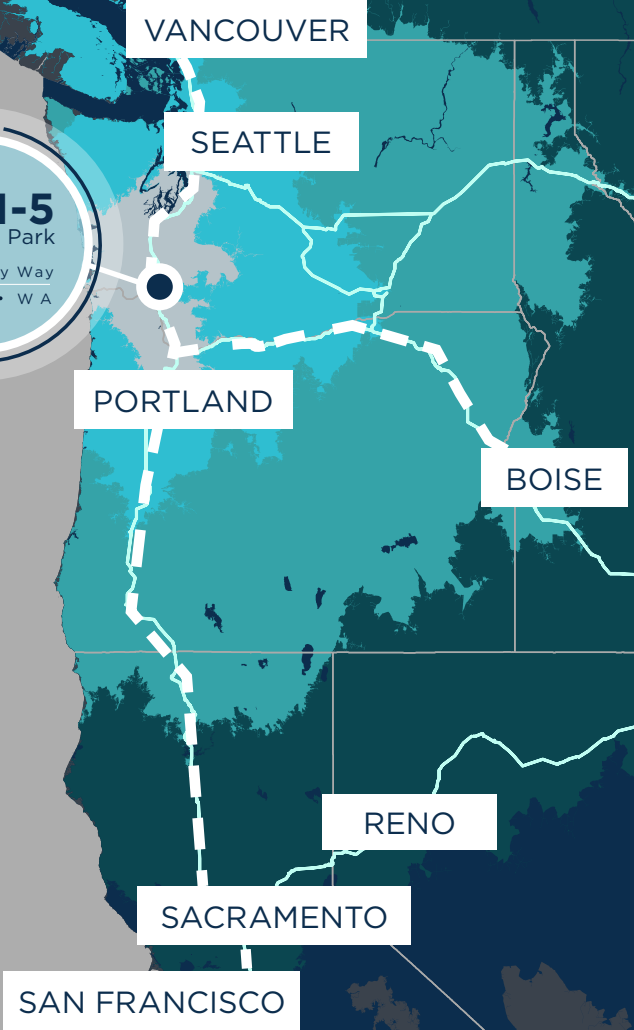
South of  
Seattle, Washington CDP

Excellent visibility  
from I-5



# CONNECTIVITY

**Mid I-5**  
Industrial Park  
2700 Talley Way  
KELSO • WA



Destination	Drive Time from Kelso, WA (hours)
Portland, OR	1 hour
Seattle, WA	2.25 hours
Vancouver, BC	4.75 hours
Boise, ID	7.25 hours
Reno, NV	10 hours
Sacramento, CA	10 hours
San Francisco, CA	10.75 hours

**Drive Time Legend**

- 4 hour
- 8 hours
- 12 hours
- 16 hours



# KELSO LABOR



Kelso's labor supply & skill set of labor per 10,000 workers is far greater than the national average with a market index score of 125 compared to the national average of 105.



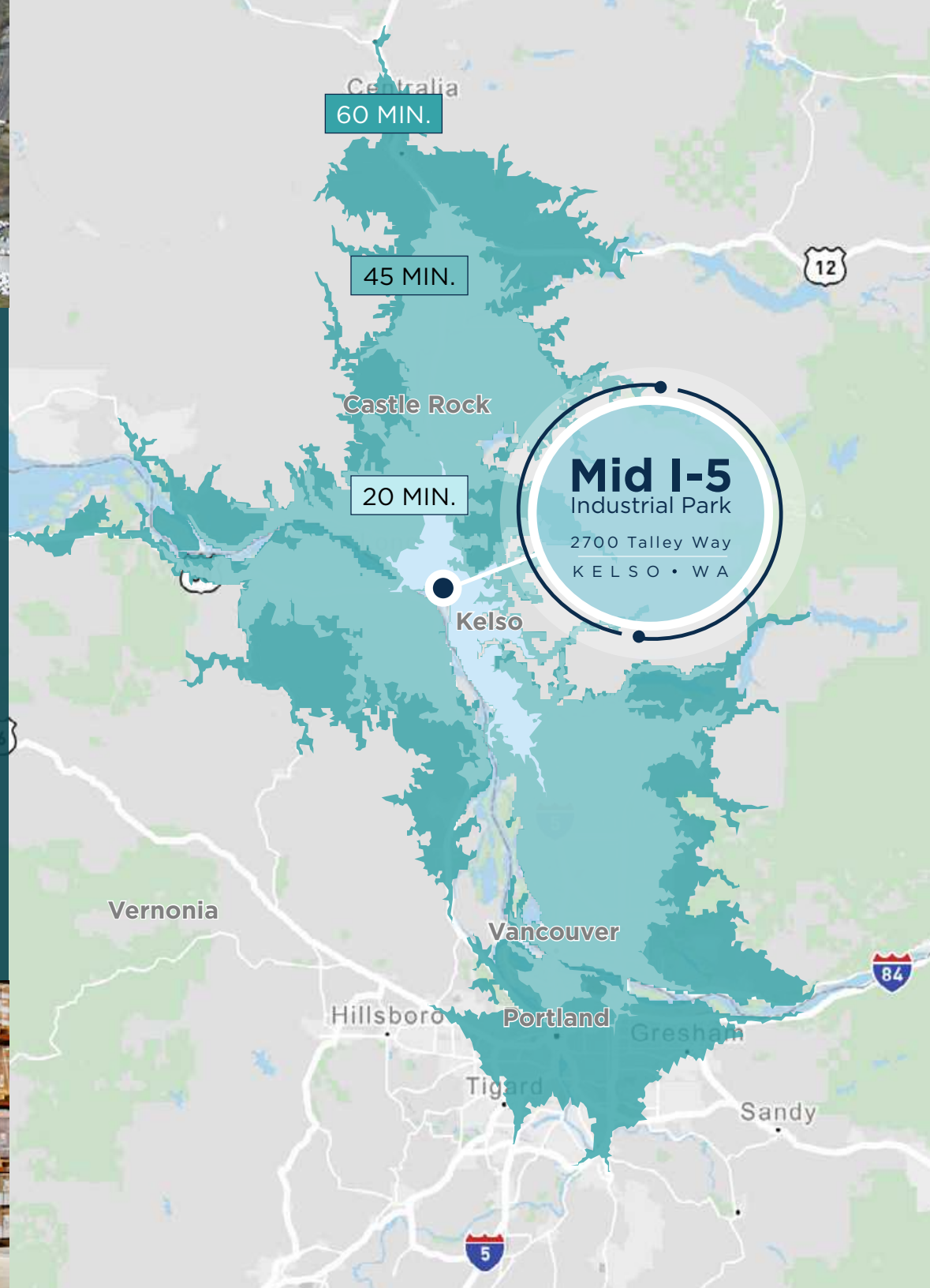
The Kelso Industrial site can access a total labor force of over 217,000.



In addition over 331,000 workers can access the site in a 45-min drive time.



The Kelso site can support a manufacturing operation of 600 full time employees due to it's proximity of skilled workers.



# 1.185 MILLION SF ON I-5 FOR LEASE OR SALE

## Mid I-5 Industrial Park

2700 Talley Way  
K E L S O • W A



CLICK TO VIEW  
SITE VIDEO

FOR MORE  
INFORMATION:

**Andrew Stark**  
Executive Vice President  
+1 206 442 2746  
andrew.stark@cbre.com

**Cara Nolan, SIOR**  
Senior Vice President  
+1 503 221 4840  
cara.nolan@cbre.com

[MIDI-5INDUSTRIALPARK.COM](https://MIDI-5INDUSTRIALPARK.COM)

**CBRE**

TrammellCrowCompany

© 2024 CBRE, Inc. All rights reserved. This information has been obtained from sources believed reliable, but has not been verified for accuracy or completeness. You should conduct a careful, independent investigation of the property & verify all information. Any reliance on this information is solely at your own risk. CBRE & the CBRE logo are service marks of CBRE, Inc. All other marks displayed on this document are the property of their respective owners, & the use of such logos does not imply any affiliation with or endorsement of CBRE. Photos herein are the property of their respective owners. Use of these images without the express written consent of the owner is prohibited.PMStudio\_November2024