



FOR SALE OR LEASE
\$8,295,000

(Existing tenant relocating to larger facility)



DOCK 9,500± SF

- 52 loading positions



OFFICE 3,150± SF



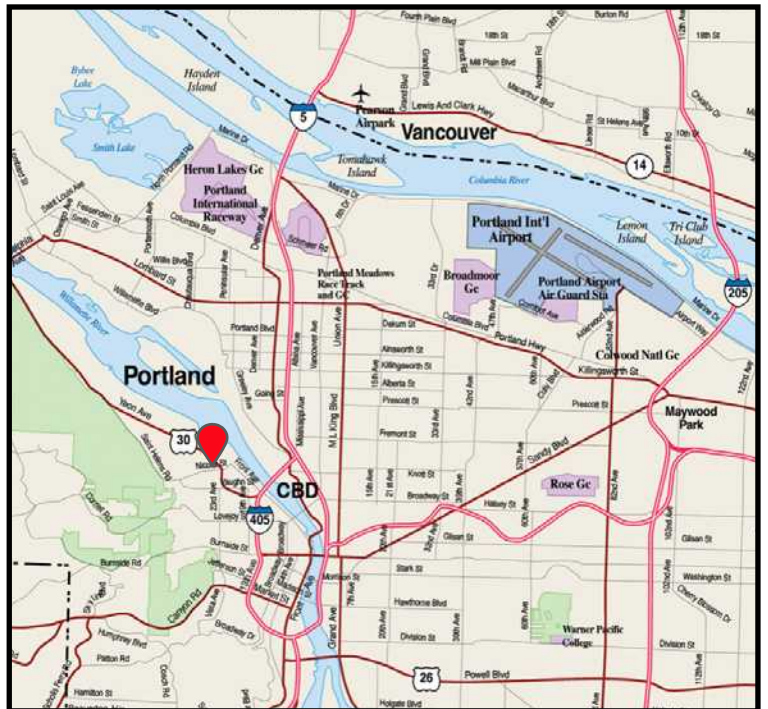
SHOP 2,800± SF

- 1 enclosed bay
- 1 canopy bay



SITE 4.93± ACRES

- Asphalt paved with concrete dock aprons & dolly pads
- Fenced & lit



CONTACT US



Jim Kemmerer
Principal
425.837.1500
kemmerer@burrttemkin.com

Garett Hall
Broker
360.259.8790
ghall@burrttemkin.com

Richard L. Burr
Broker
OR License# 201245177

380 Front Street South
Issaquah, WA 98027

Brad Carnese
Cushman Wakefield
Managing Director
503.279.1750
brad.carnese@cushwake.com

This property is well located in Portland's Northwest Industrial area, and provides excellent access to Route 30, I-405 and I-5. The property is zoned IH – Heavy Industrial (City of Portland) with a Prime Industrial (k) overlay. This overlay preserves Portland's limited supply of prime industrial land for industrial uses. Allowable uses under this zoning and overlay designation consist of warehouse and distribution facilities, manufacturing, railroad yards, and other heavy industrial uses (*view zoning*).



KEY ACCESS POINTS



0.6± Miles



1.5± Miles via Hwy 30



2.3± Miles via I-405 N

CONTACT US



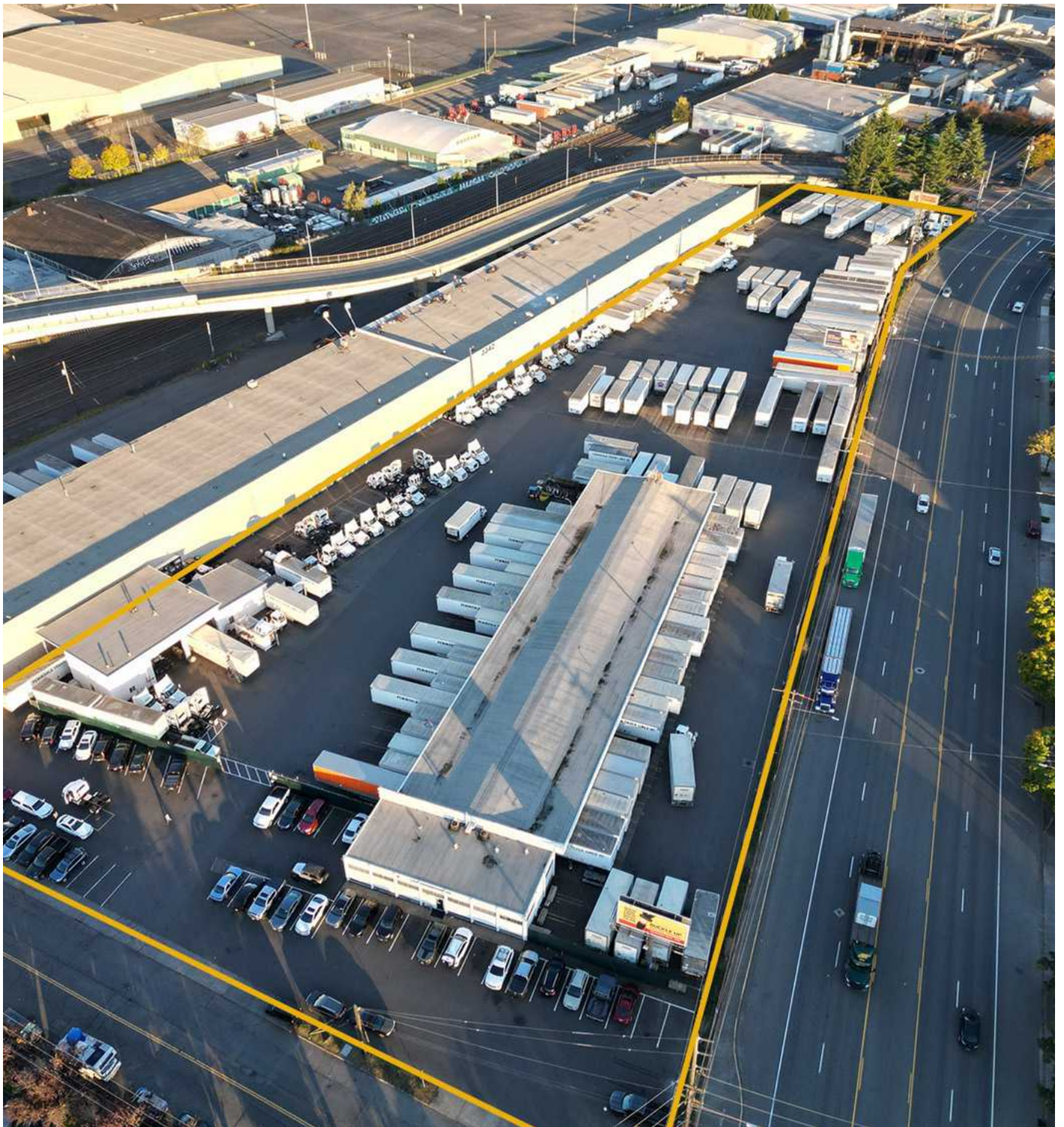
Jim Kemmerer
Principal
425.837.1500
kemmerer@burrtemkin.com

Garett Hall
Broker
360.259.8790
ghall@burrtemkin.com

Richard L. Burr
Broker
OR License# 201245177

380 Front Street South
Issaquah, WA 98027

Brad Carnese
Cushman Wakefield
Managing Director
503.279.1750
brad.carnese@cushwake.com



CONTACT US



Jim Kemmerer

Principal

425.837.1500

kemmerer@burrtemkin.com

Garett Hall

Broker

360.259.8790

ghall@burrtemkin.com

Richard L. Burr

Broker

OR License# 201245177

380 Front Street South
Issaquah, WA 98027

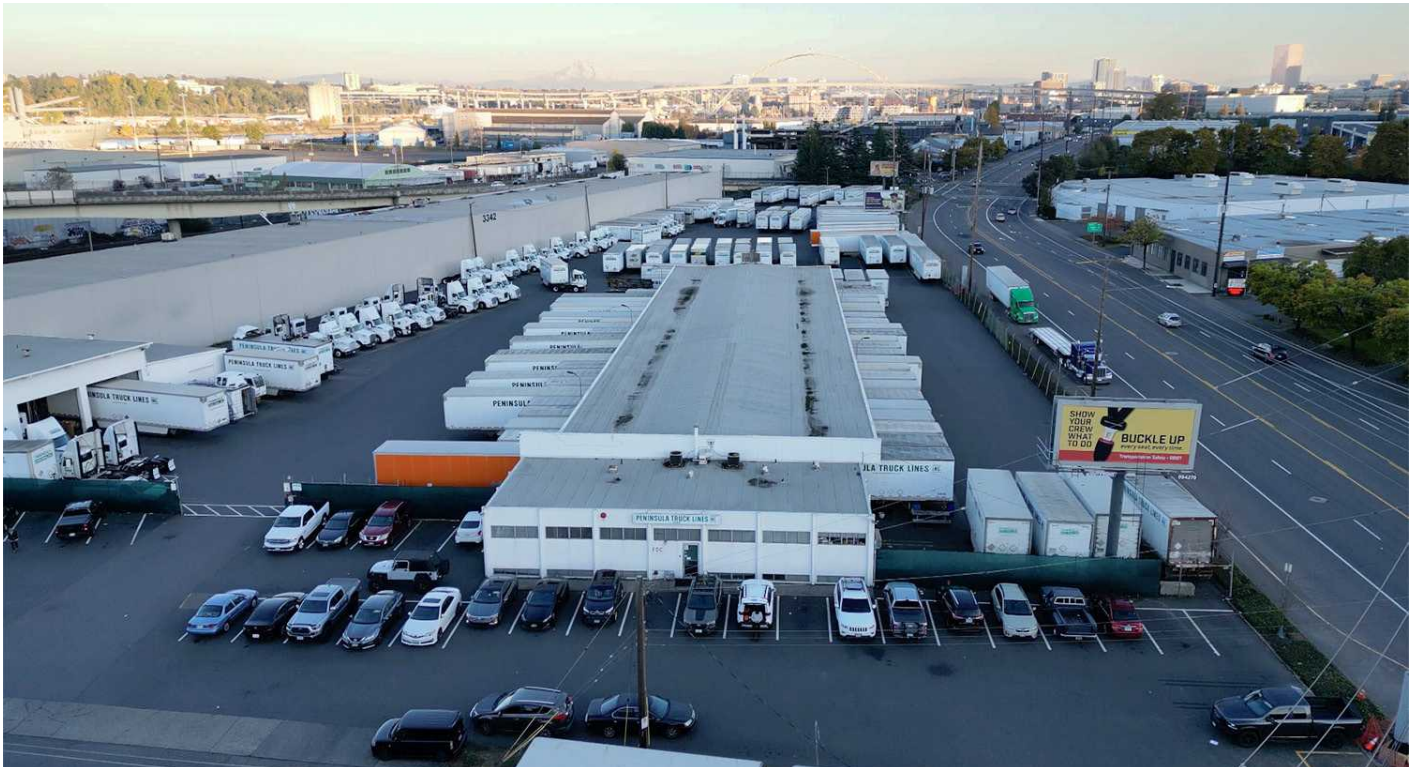
Brad Carnese

Cushman Wakefield

Managing Director

503.279.1750

brad.carnese@cushwake.com



CONTACT US



Jim Kemmerer

Principal

425.837.1500

kemmerer@burrtemkin.com

Garett Hall

Broker

360.259.8790

ghall@burrtemkin.com

Richard L. Burr

Broker

OR License# 201245177

380 Front Street South
Issaquah, WA 98027

Brad Carnese

Cushman Wakefield

Managing Director

503.279.1750

brad.carnese@cushwake.com