

11 Spokane St. Suite #306
WENATCHEE, WA

FOR SALE



- 1,343 SF. Office Condo
- Columbia River views

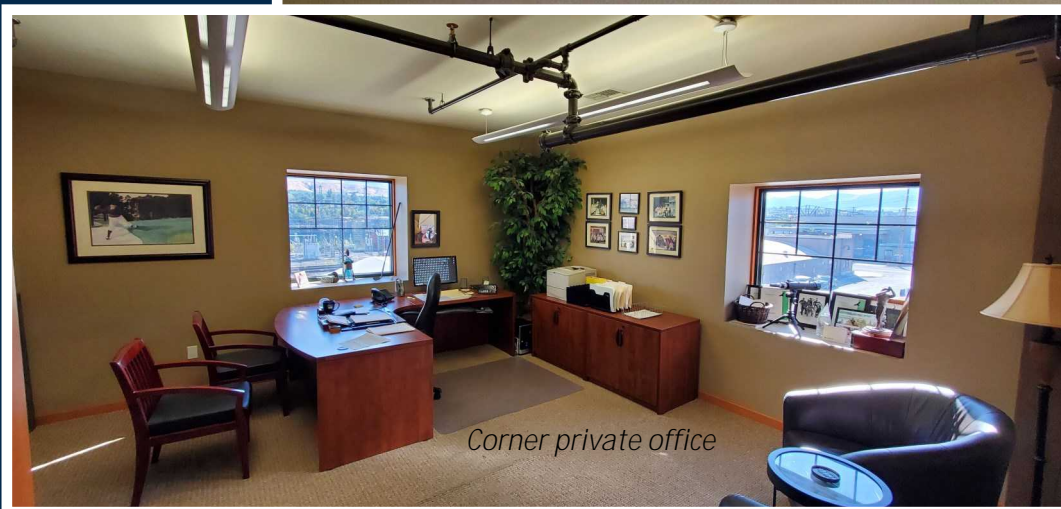
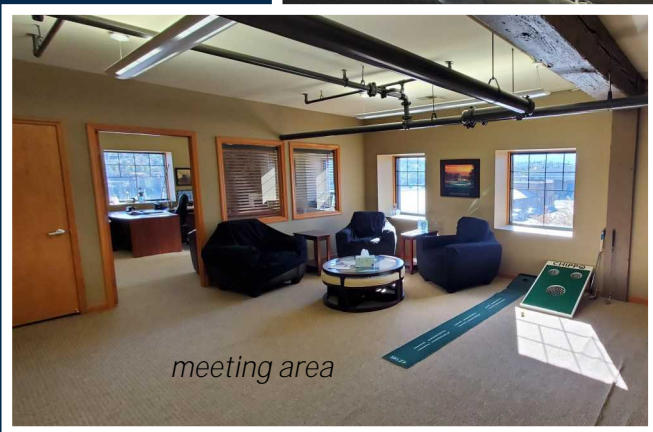
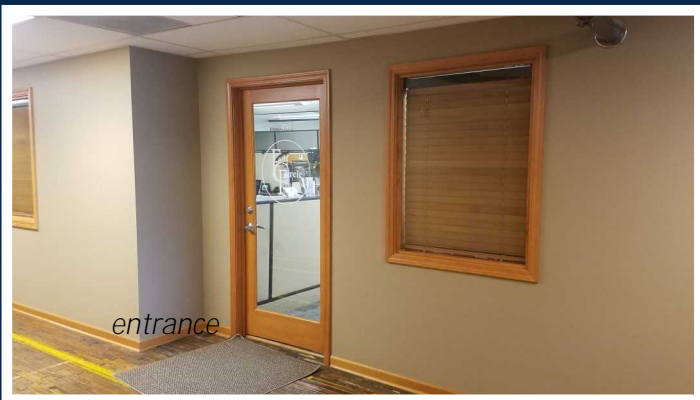
CENTER INVESTMENTS INC.

O: (509) 884-6381 www.centerinvestmentsinc.com

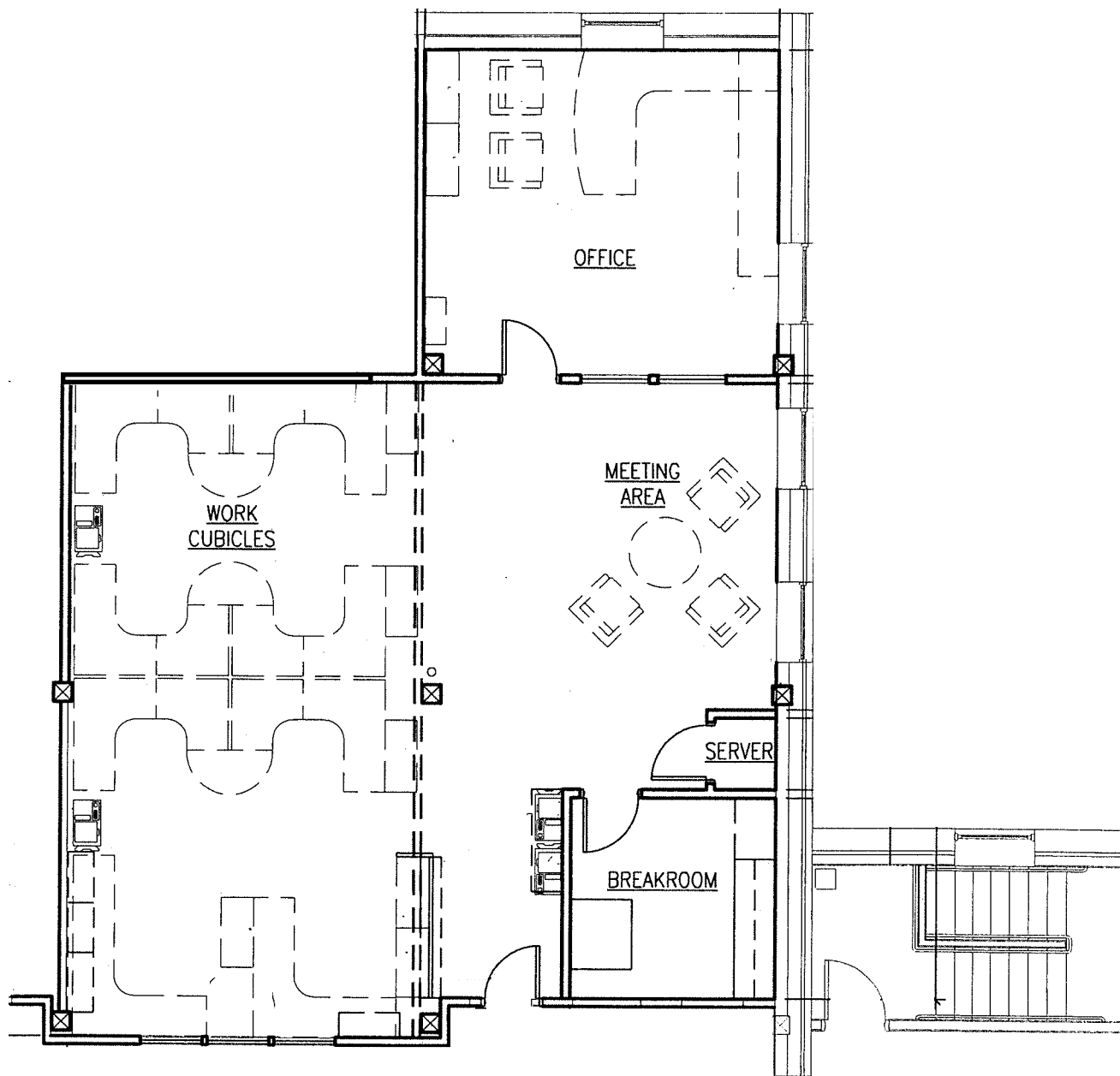


11 Spokane St. Suite #306

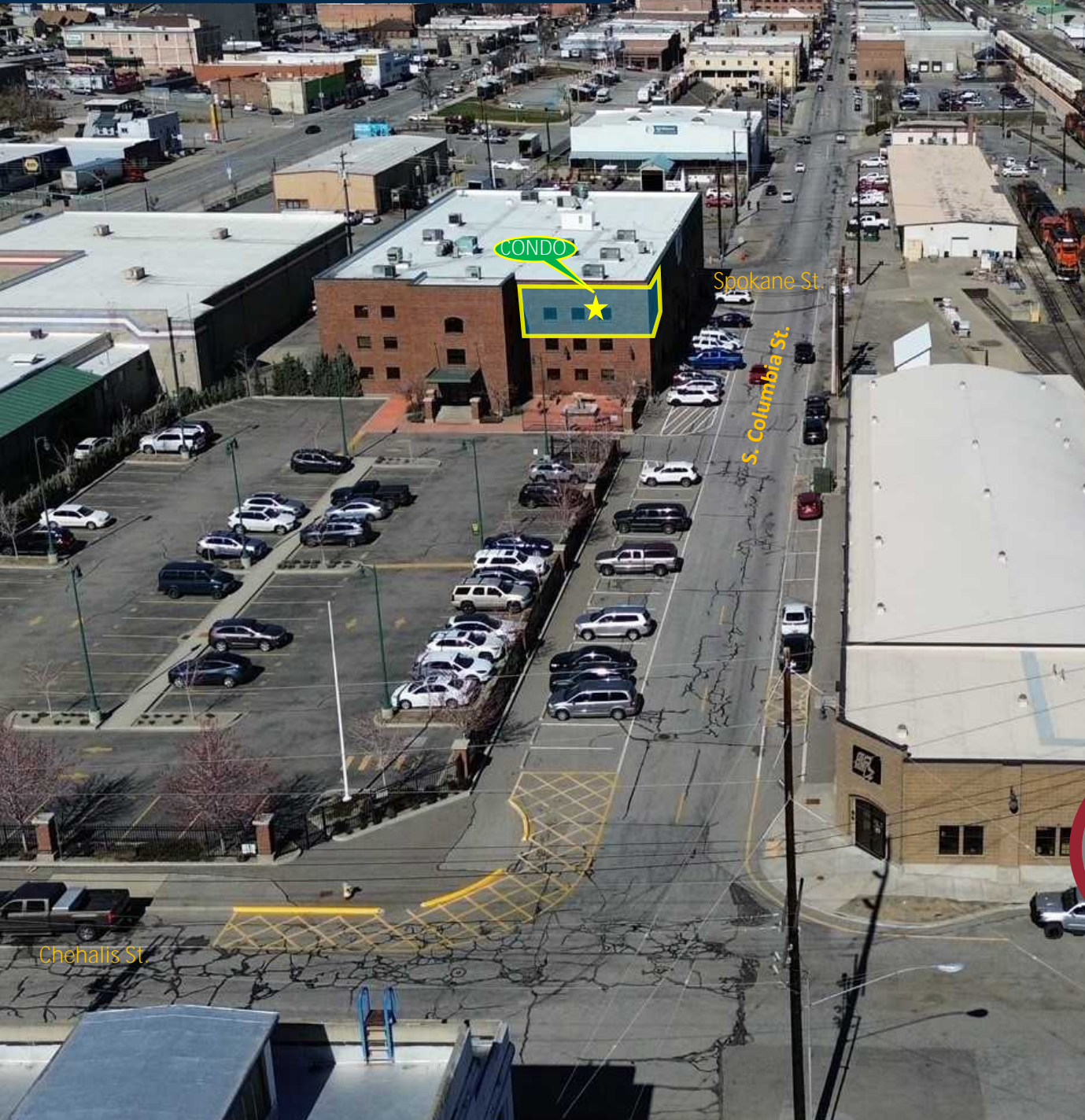
INTERIOR PHOTOS



11 Spokane St. #306
Wenatchee, WA.



11 Spokane St. Suite #306 WENATCHEE, WA



1,343 SF. Office Condo

- Investment opportunity
- Mostly open floorplan
- 3rd fl. w/elevator access
- Secure parking
- Well maintained property
- Corner suite, river view
- Central market location
- Active Redevelopment area
- Close proximity to Apple Capital Loop trail/park

professional office bldg.

OWNERSHIP INVESTMENT

Columbia River view



HISTORIC MAIN STREET
WENATCHEE
DOWNTOWN ASSOCIATION



SITE



Columbia River

 **Hilton**
Garden Inn™



WENATCHEE VALLEY
MALL

