

FOR SALE

OLYMPIC PROFESSIONAL BUILDING

2600 - 2602 Cherry Ave Bremerton, WA 98310



OFFERING SUMMARY

Sale Price: \$1,465,000

Available SF: 9,781 SF

Lot Size: 0.75 Acres

Year Built: 1990

Renovated: 2002

Zoning: EC

PROPERTY OVERVIEW

The Olympic Professional Building is located in the Sheridan Park neighborhood of East Bremerton; a one hour ferry ride - or thirty minute fast ferry ride - from Downtown Seattle.

18 covered and secured parking spaces.

Currently Built out as surgery center / medical.

Brandon Thomas
(206) 303-9595
bthomas@cbcworldwide.com

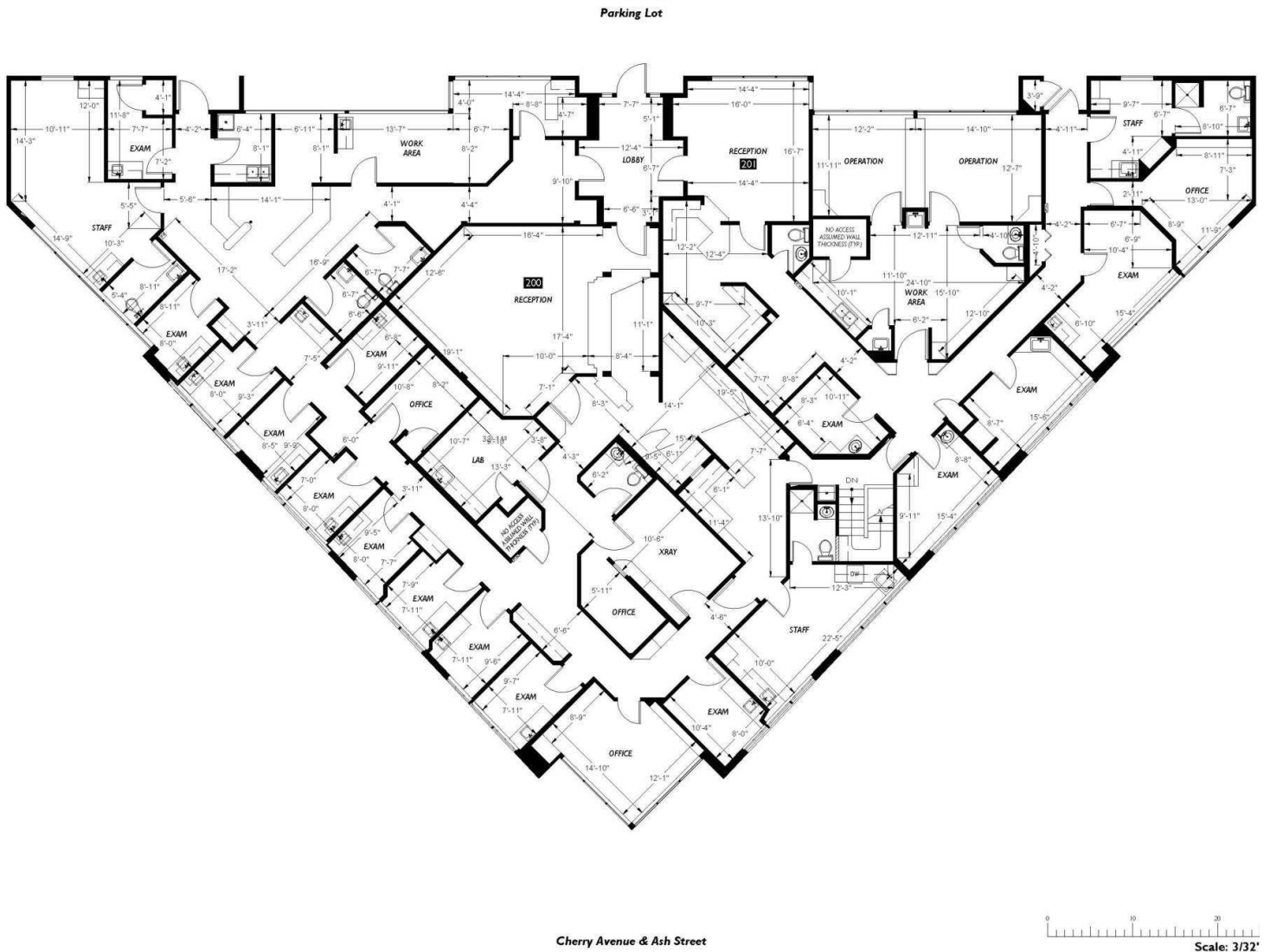


**COLDWELL BANKER
COMMERCIAL**
DANFORTH

FOR SALE

OLYMPIC PROFESSIONAL BUILDING

2600 - 2602 Cherry Ave Bremerton, WA 98310



Floor 1 - Floor Plan

Brandon Thomas

(206) 303-9595

bthomas@cbcworldwide.com

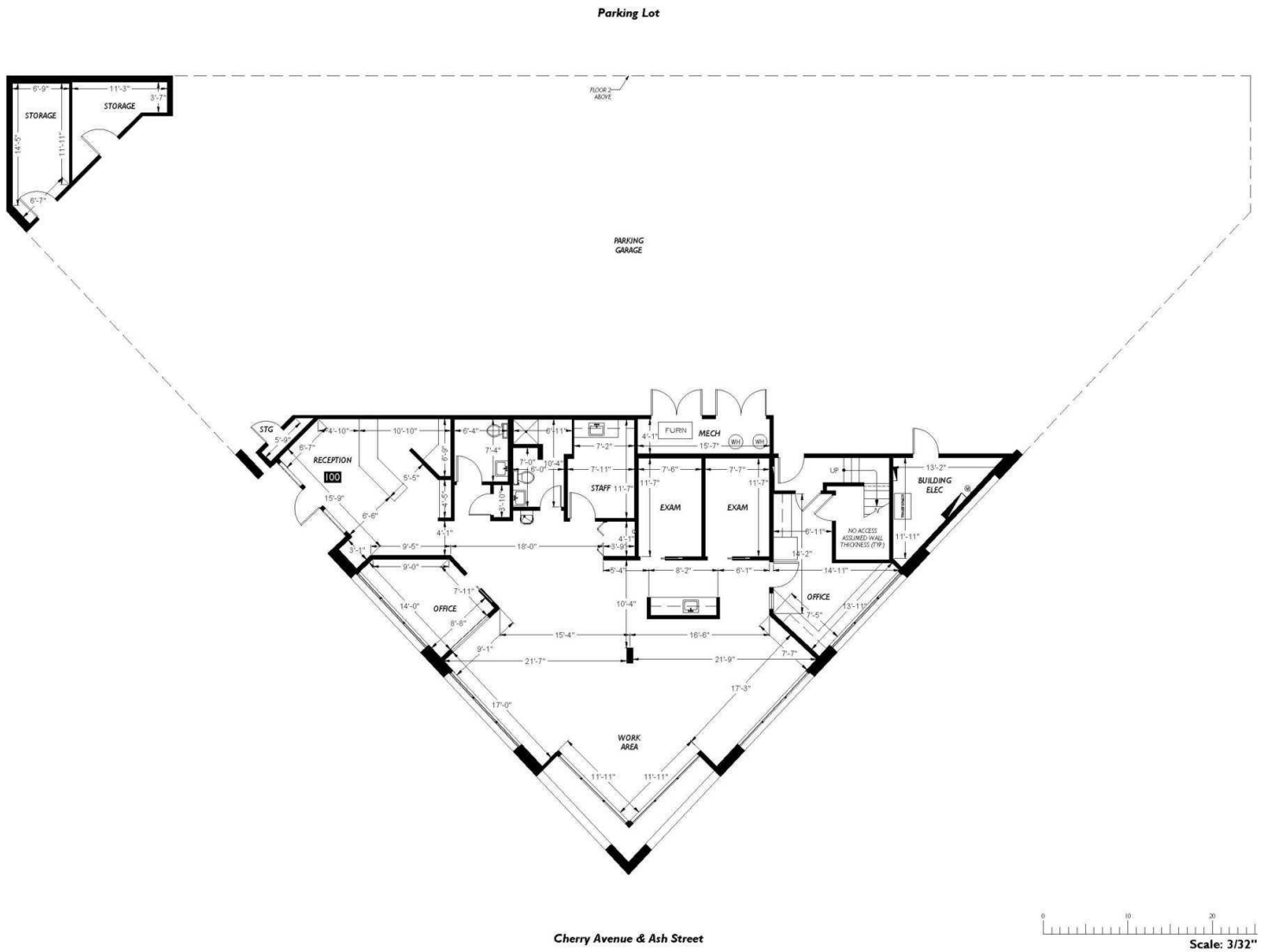


**COLDWELL BANKER
COMMERCIAL**
DANFORTH

FOR SALE

OLYMPIC PROFESSIONAL BUILDING

2600 - 2602 Cherry Ave Bremerton, WA 98310



Floor 2 - Floor Plan

Brandon Thomas

(206) 303-9595

bthomas@cbcworldwide.com



**COLDWELL BANKER
COMMERCIAL**
DANFORTH

FOR SALE

OLYMPIC PROFESSIONAL BUILDING

2600 - 2602 Cherry Ave Bremerton, WA 98310



Brandon Thomas
(206) 303-9595
bthomas@cbcworldwide.com

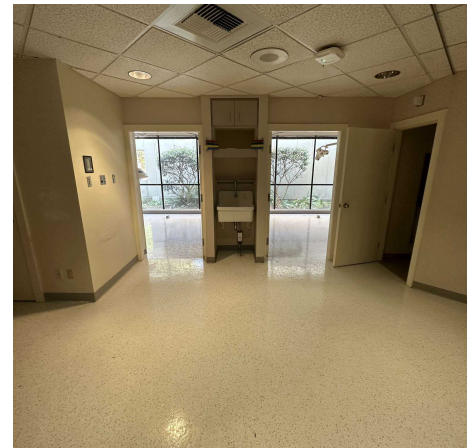


**COLDWELL BANKER
COMMERCIAL**
DANFORTH

FOR SALE

OLYMPIC PROFESSIONAL BUILDING

2600 - 2602 Cherry Ave Bremerton, WA 98310



Brandon Thomas
(206) 303-9595
bthomas@cbcworldwide.com

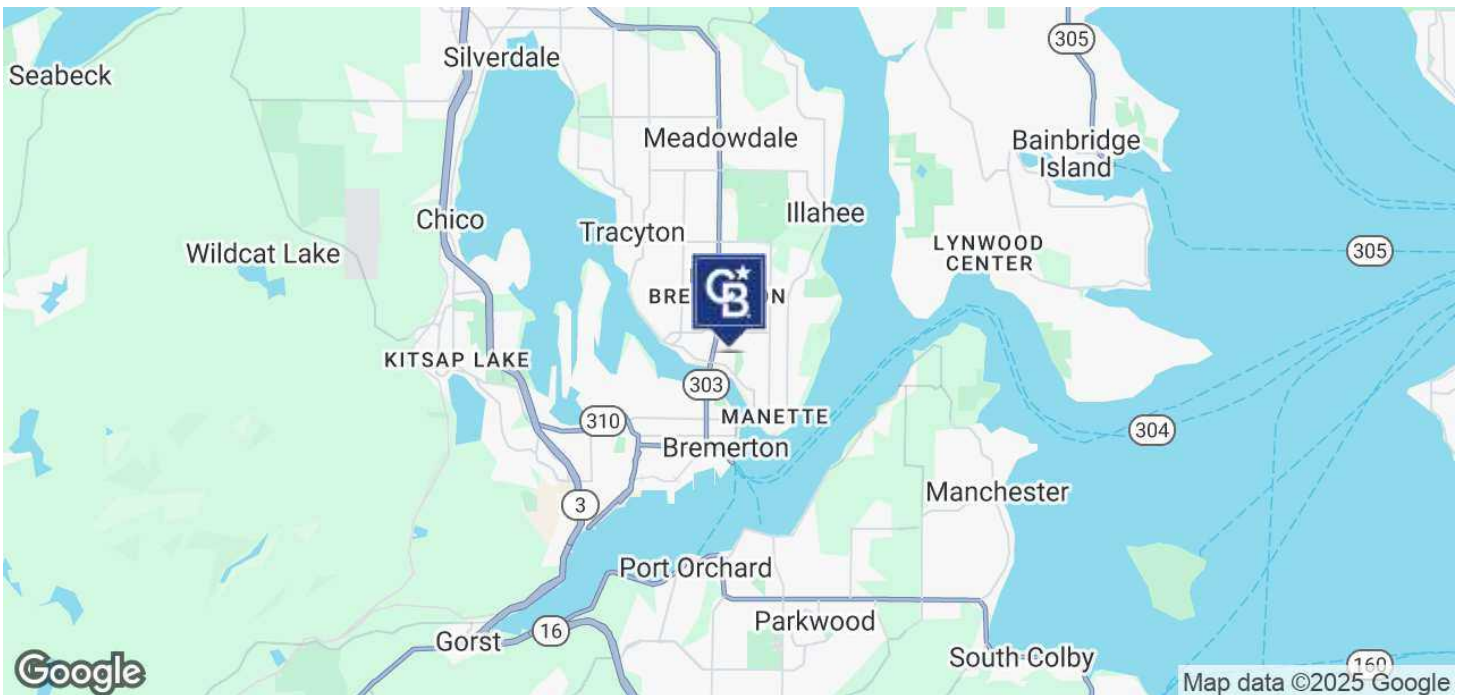
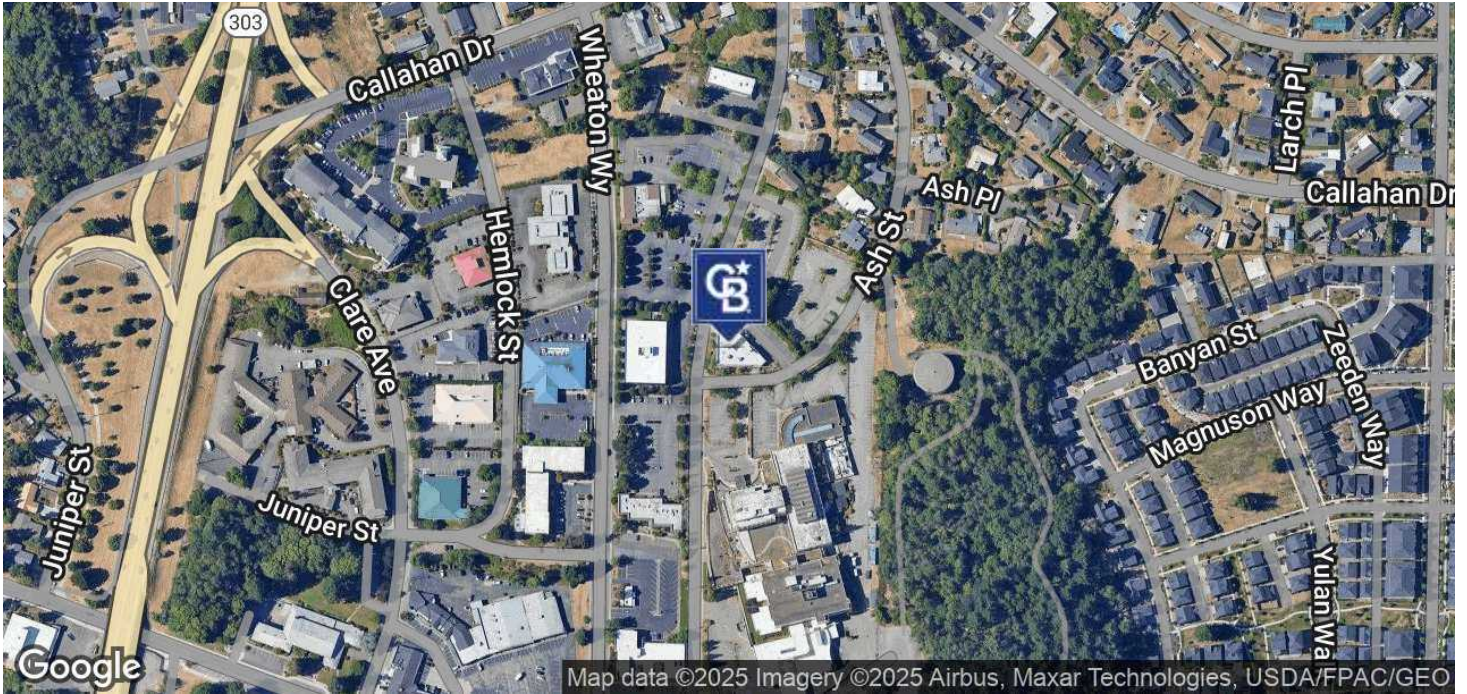


**COLDWELL BANKER
COMMERCIAL**
DANFORTH

FOR SALE

OLYMPIC PROFESSIONAL BUILDING

2600 - 2602 Cherry Ave Bremerton, WA 98310



Brandon Thomas

(206) 303-9595

bthomas@cbcworldwide.com



**COLDWELL BANKER
COMMERCIAL**
DANFORTH