

±0.55 Acre Development Site For Sale  
**TOWNHOUSE DEVELOPMENT SITE**

1301 Lombard Avenue  
Everett, WA



**PROPOSALS DUE BY TUESDAY, FEBRUARY 4<sup>th</sup>, 2025**

 **LEE &  
ASSOCIATES**  
COMMERCIAL REAL ESTATE SERVICES

**THERESA BAUCCIO-TESCHLOG, MBA, NIGP-CPP, CPPB**  
TBauccio@everettwa.gov  
D 425-257-8901

# ±0.55 Acre Development Site For Sale TOWNHOUSE DEVELOPMENT SITE

1301 Lombard Avenue  
Everett, WA

Lee & Associates has been retained by the City of Everett to present this opportunity to acquire the Townhouse Development Site. This site offers the rare opportunity to develop in North Everett with close proximity to amenities including the Everett Community College, Washington State University Everett, Seattle Children's North Clinic, and Providence Regional Medical Center.



ADDRESS	1301 Lombard Ave, Everett, WA
LAND AREA	Approximately 23,958 (±0.55 Acres)
PARCEL NUMBER	29051700301400
SITE CONFIGURATION	Rectangular-shaped, corner block site
ZONING	NB - Neighborhood Business (City of Everett)
PROPOSAL DUE DATE	February 4, 2025

## DIRECT ALL QUESTIONS TO:

**THERESA BAUCCIO-TESCHLOG, MBA, NIGP-CPP, CPPB**

TBaucchio@everettwa.gov

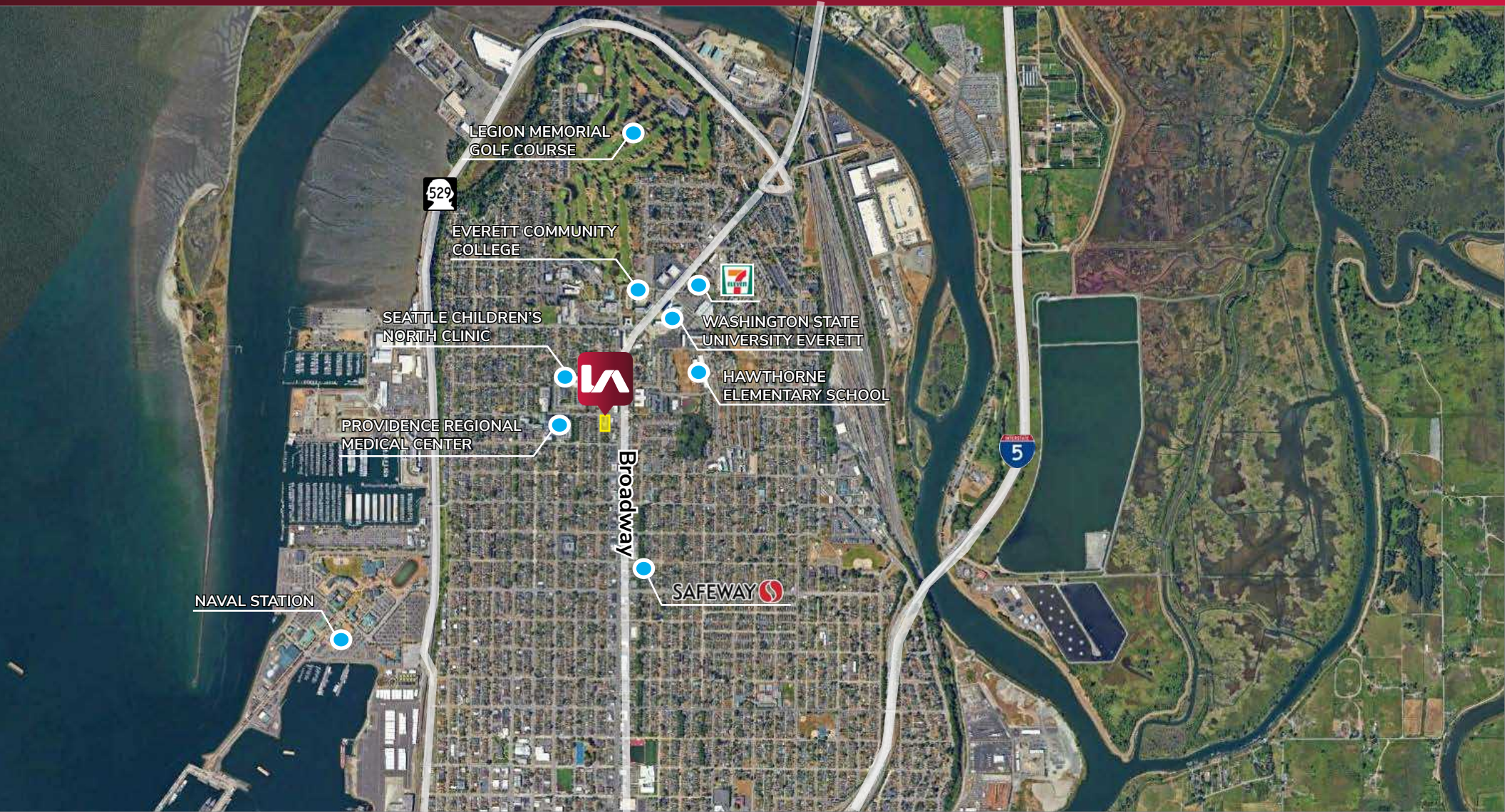
D 425-257-8901



**Click Here to  
View Request  
for Proposals**

±0.55 Acre Development Site For Sale  
**TOWNHOUSE DEVELOPMENT SITE**

1301 Lombard Avenue  
Everett, WA



We obtained the information above from sources we believe to be reliable. However, we have not verified its accuracy and make no guarantee, warranty or representation about it. It is submitted subject to the possibility of errors, omissions, change of price, rental or other conditions, prior sale, lease or financing, or withdrawal without notice. We include projections, opinions, assumptions or estimates for example only, and they may not represent current or future performance of the property. You and your tax and legal advisors should conduct your own investigation of the property and transaction.