

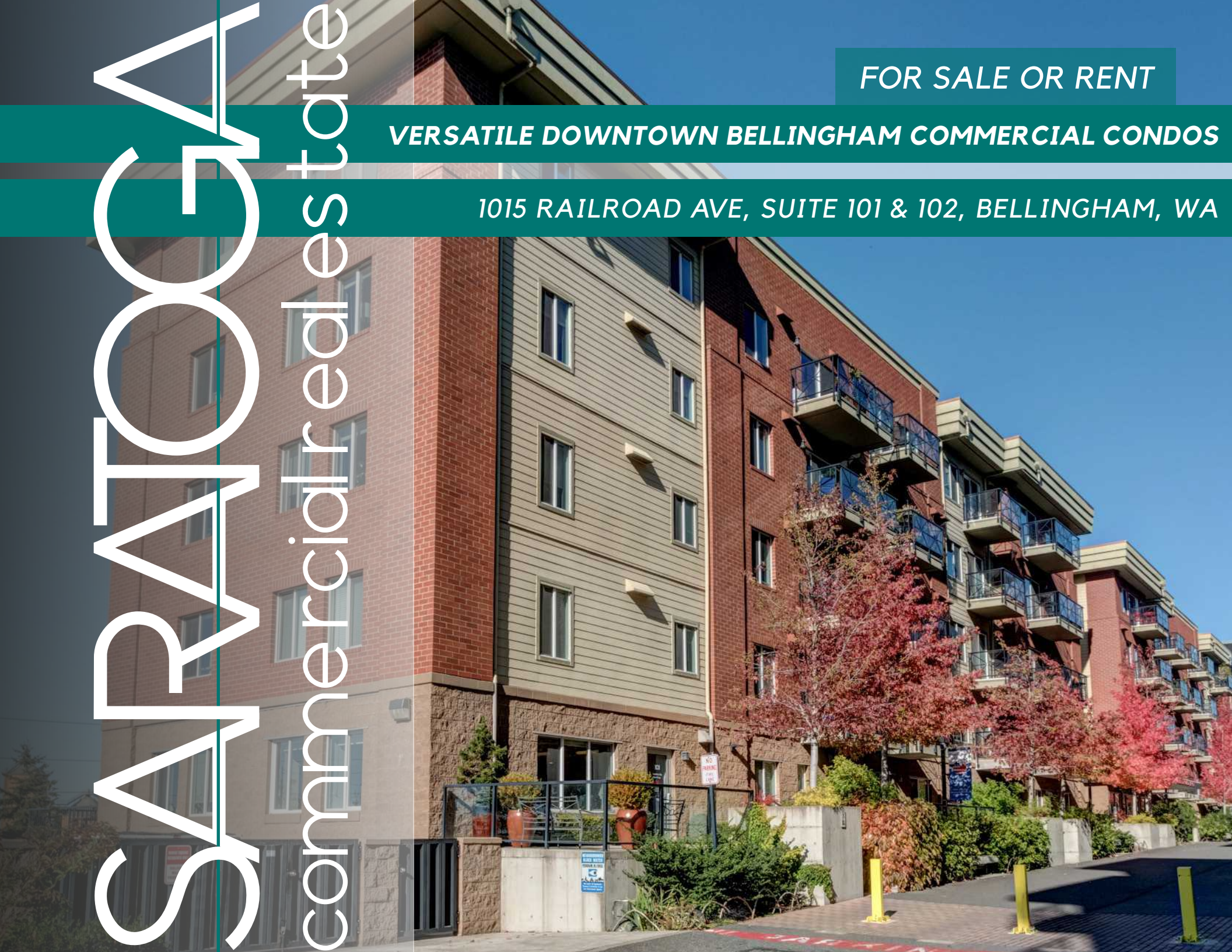
SARATOGA

commercial real estate

FOR SALE OR RENT

VERSATILE DOWNTOWN BELLINGHAM COMMERCIAL CONDOS

1015 RAILROAD AVE, SUITE 101 & 102, BELLINGHAM, WA



# VERSATILE DOWNTOWN BELLINGHAM COMMERCIAL CONDOS

1015 RAILROAD AVE, SUITE 101 & 102, BELLINGHAM, WA

## UNIT 101:

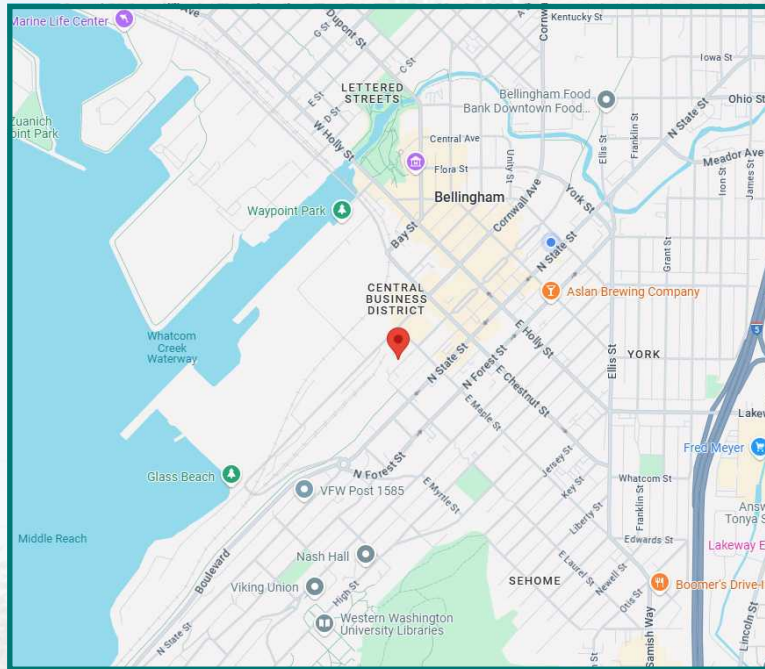
FOR SALE: **\$480,000**

989 SQUARE FEET

## UNIT 102:

FOR SALE: **\$282,500**

612 SQUARE FEET



**Elliott Kophs**

[elliott@saratogaRE.com](mailto:elliott@saratogaRE.com)

360.610.4980

**Hannah Cano**

[hannah@saratogaRE.com](mailto:hannah@saratogaRE.com)

360.610.4335

[saratogaRE.com](http://saratogaRE.com)

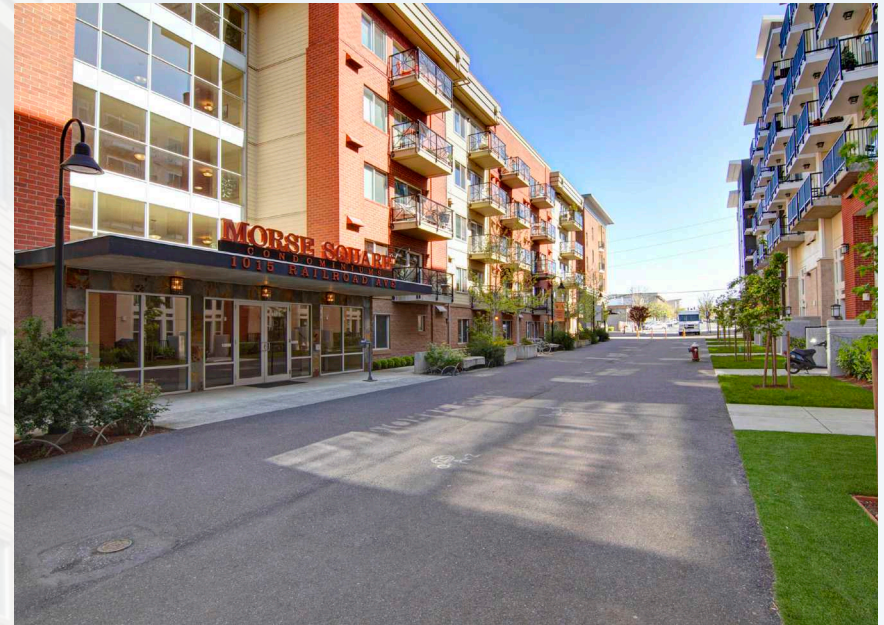
228 E CHAMPION, STE 102, BELLINGHAM, WA 98225

INFORMATION CONTAINED HEREIN HAS BEEN OBTAINED FROM SOURCES DEEMED RELIABLE, BUT NOT GUARANTEED. BUYER TO VERIFY.

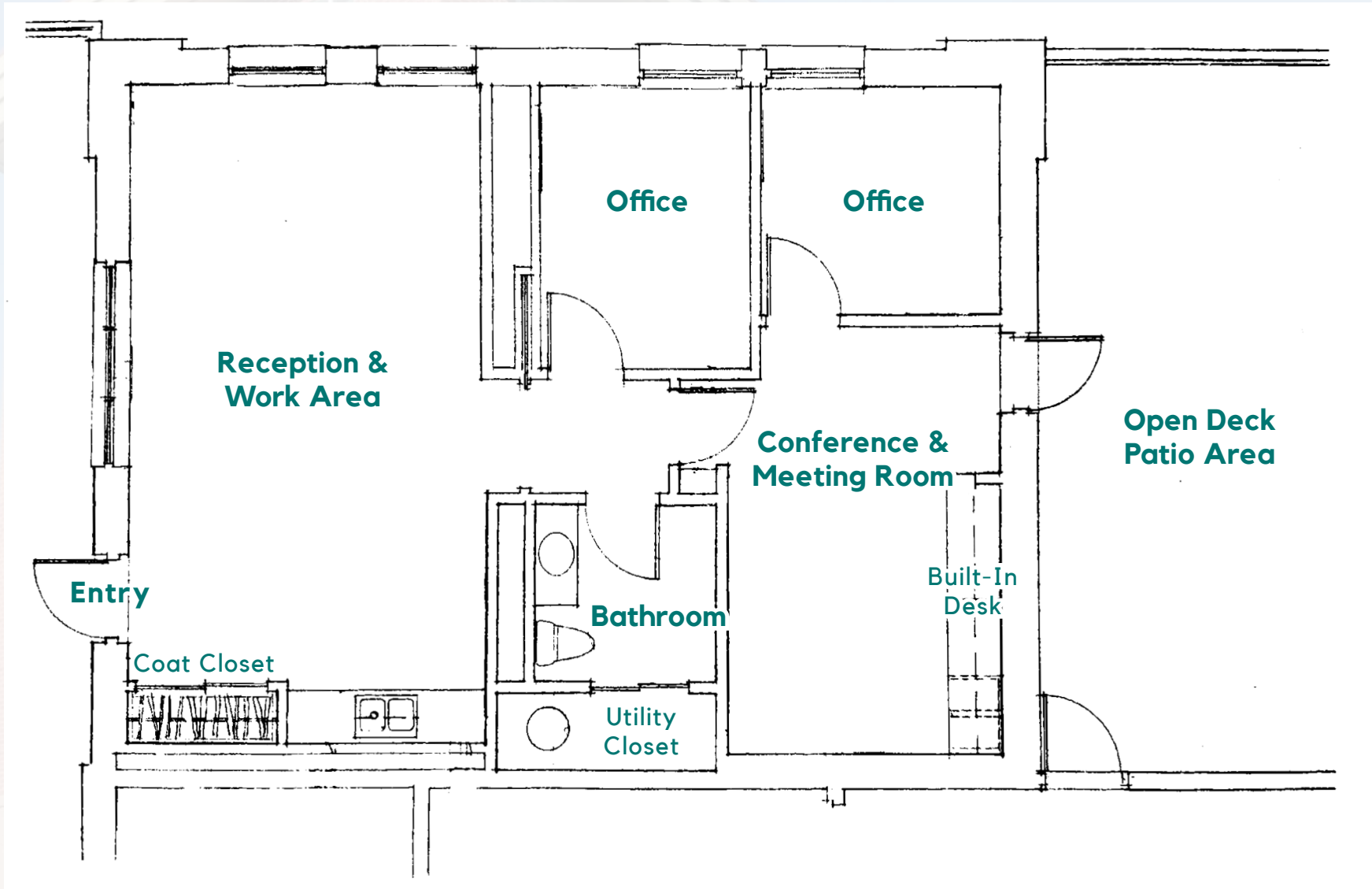
# VERSATILE DOWNTOWN BELLINGHAM COMMERCIAL CONDOS

1015 RAILROAD AVE, SUITE 101 & 102, BELLINGHAM, WA

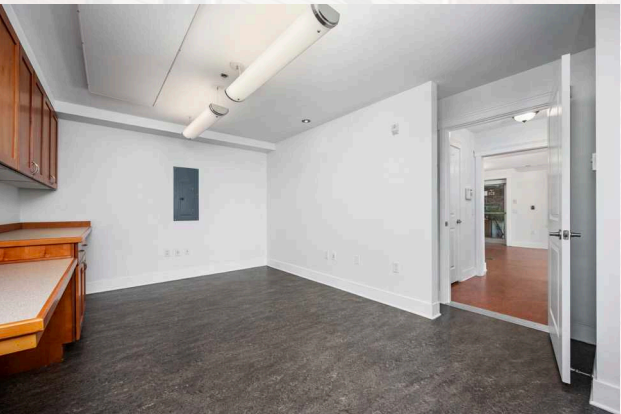
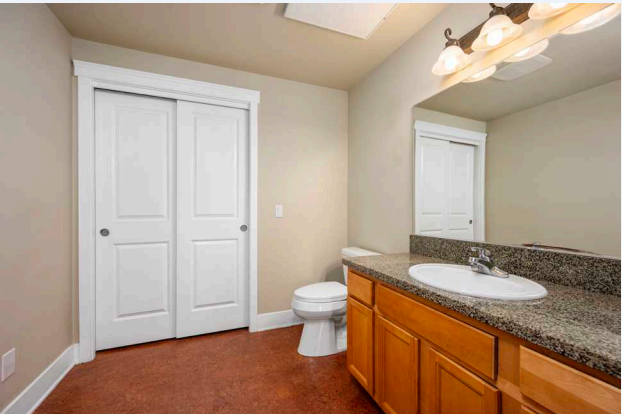
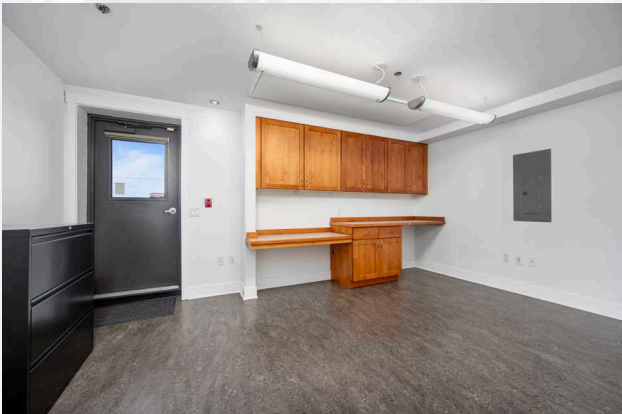
- Units are adjacent to bustling high foot traffic areas such as the farmers market, local restaurants, breweries, and the south bay trail.
- Each unit includes a full bath and kitchenette, making them perfect for a lifestyle office, meeting space, or versatile area for a growing business.
- Well-suited for retail, professional services, or entrepreneurial ventures.

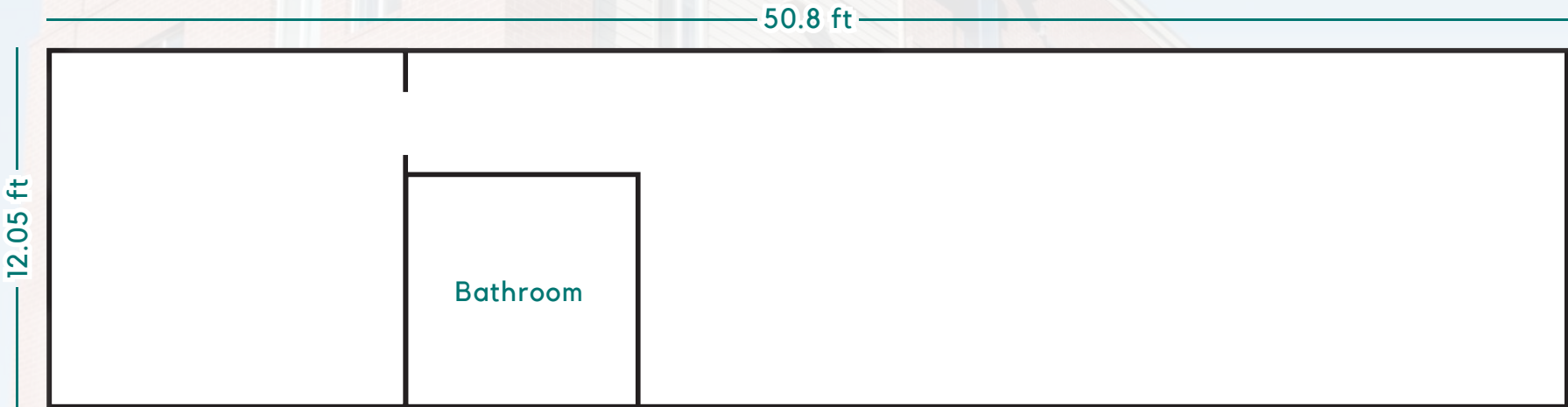


- Flexible configurations to suit business and personal needs.
- Owners are willing to carry financing with a substantial down payment, offering added flexibility for qualified buyers.



**989 Square Feet**





**612 Square Feet**

