

Investment Opportunity | Offering Memorandum

Saltzer Medical Building

2840 S. Meridian Road | Meridian, ID

David McDonald

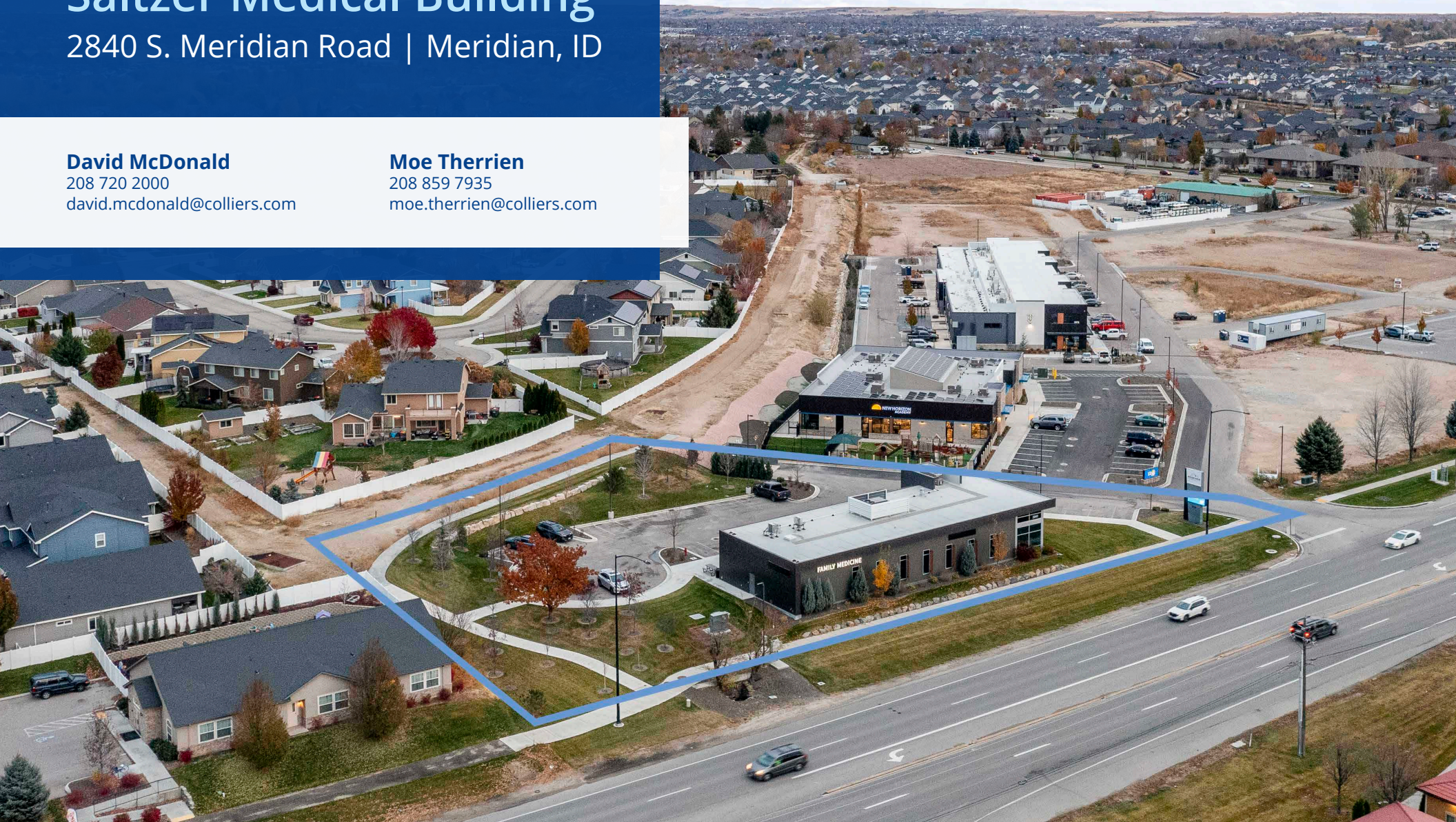
208 720 2000

david.mcdonald@colliers.com

Moe Therrien

208 859 7935

moe.therrien@colliers.com



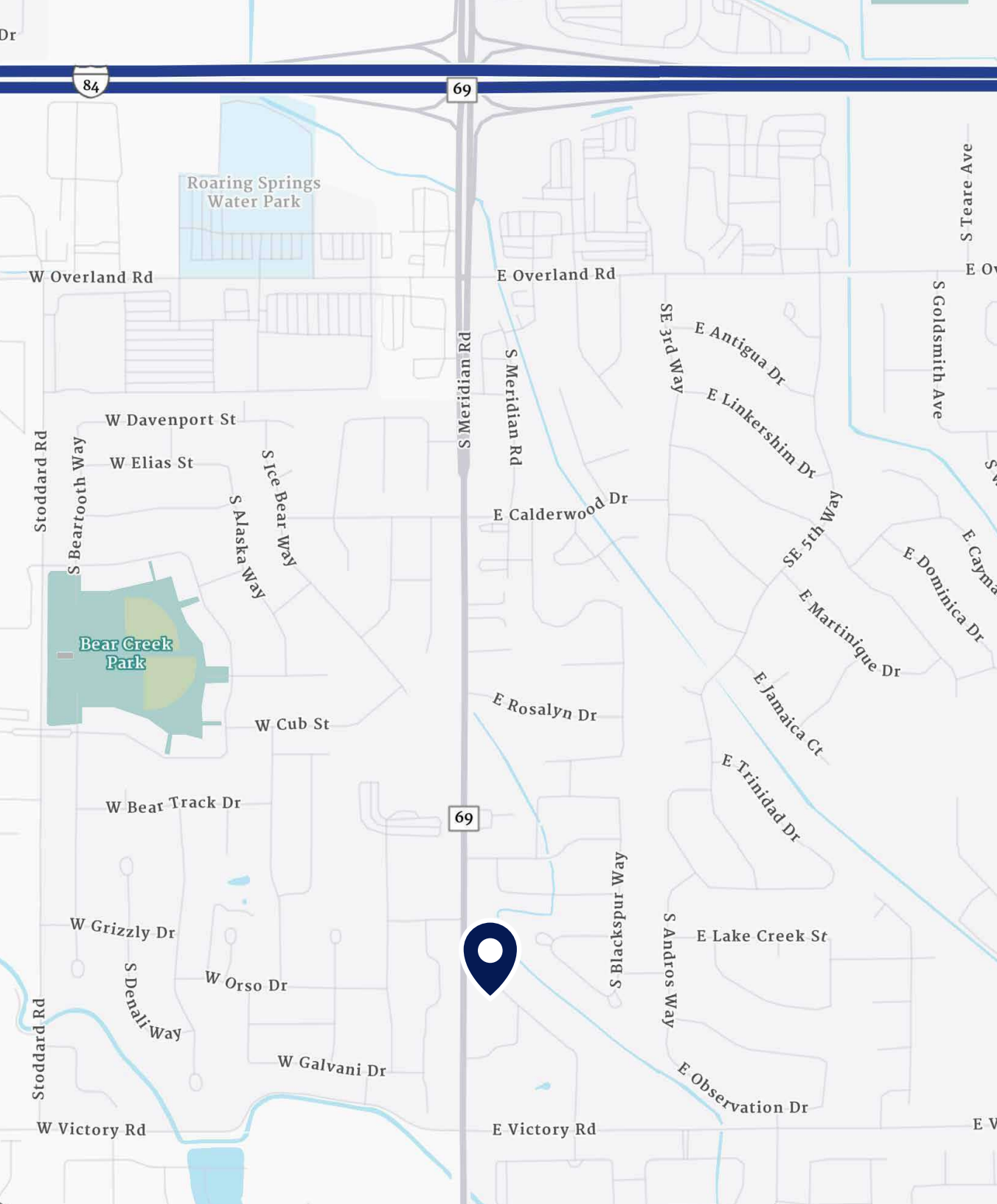


Table of Contents

03 Investment Summary

04 Floor Plan

06 Location Map

08 Area Overview

09 Demographics



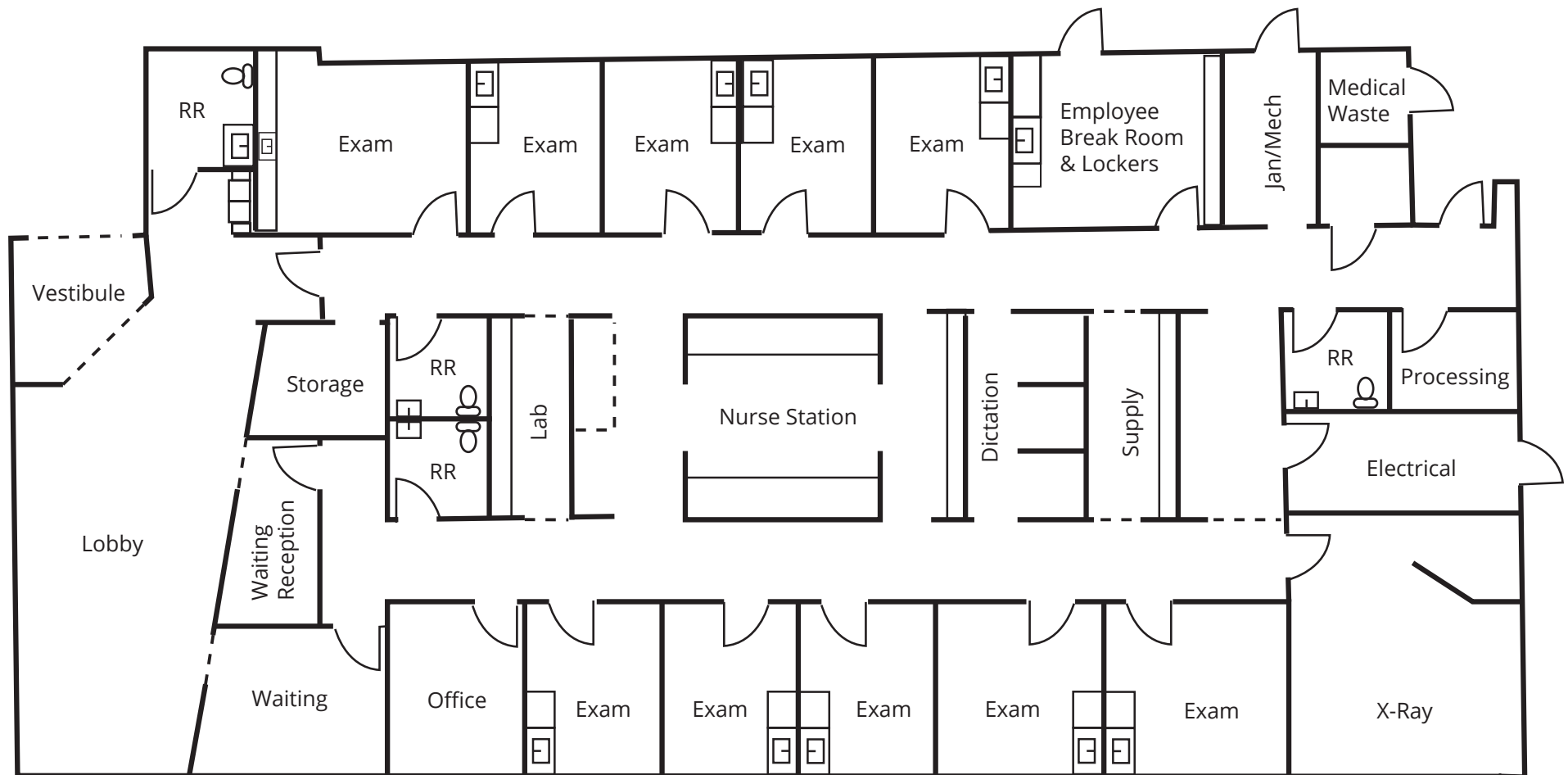
Key Highlights

- 2020 Construction
- BTS medical clinic
- Long term lease
- In-fill site
- High-growth corridor

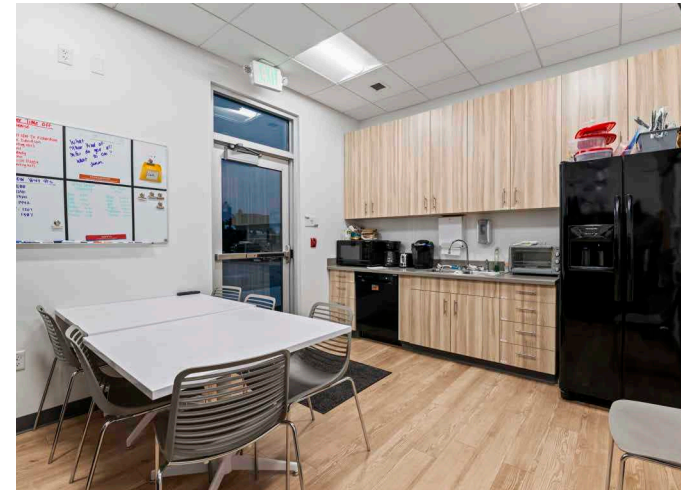
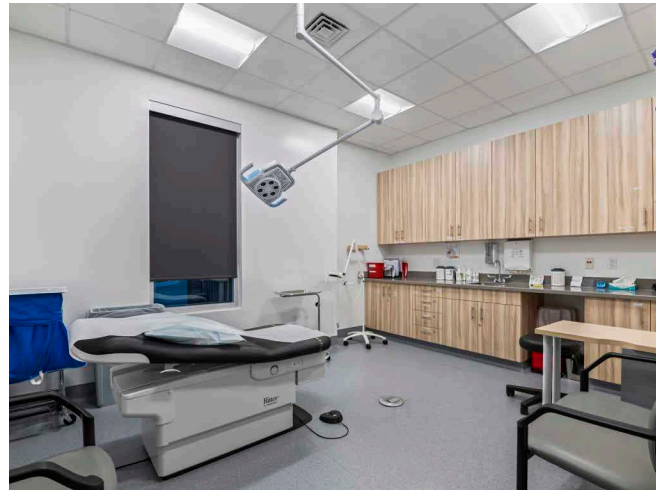


Property Address	2840 S. Meridian Road Meridian, ID
Offering Price	\$5,340,000
Net Operating Income	\$267,000
Cap Rate	5.1%
Building Size	5,375 SF
Construction Year	2020
Lot Size	1.159 Acres
Lease Rate	Oct. 2024 - ±\$49.67 PSF
Lease Type	NNN, 2.5% Annual Increases
Lease Term	15 Years, Expires 2035
Occupancy	100%
Access	Contact Agent

Floor Plan



Property Photos



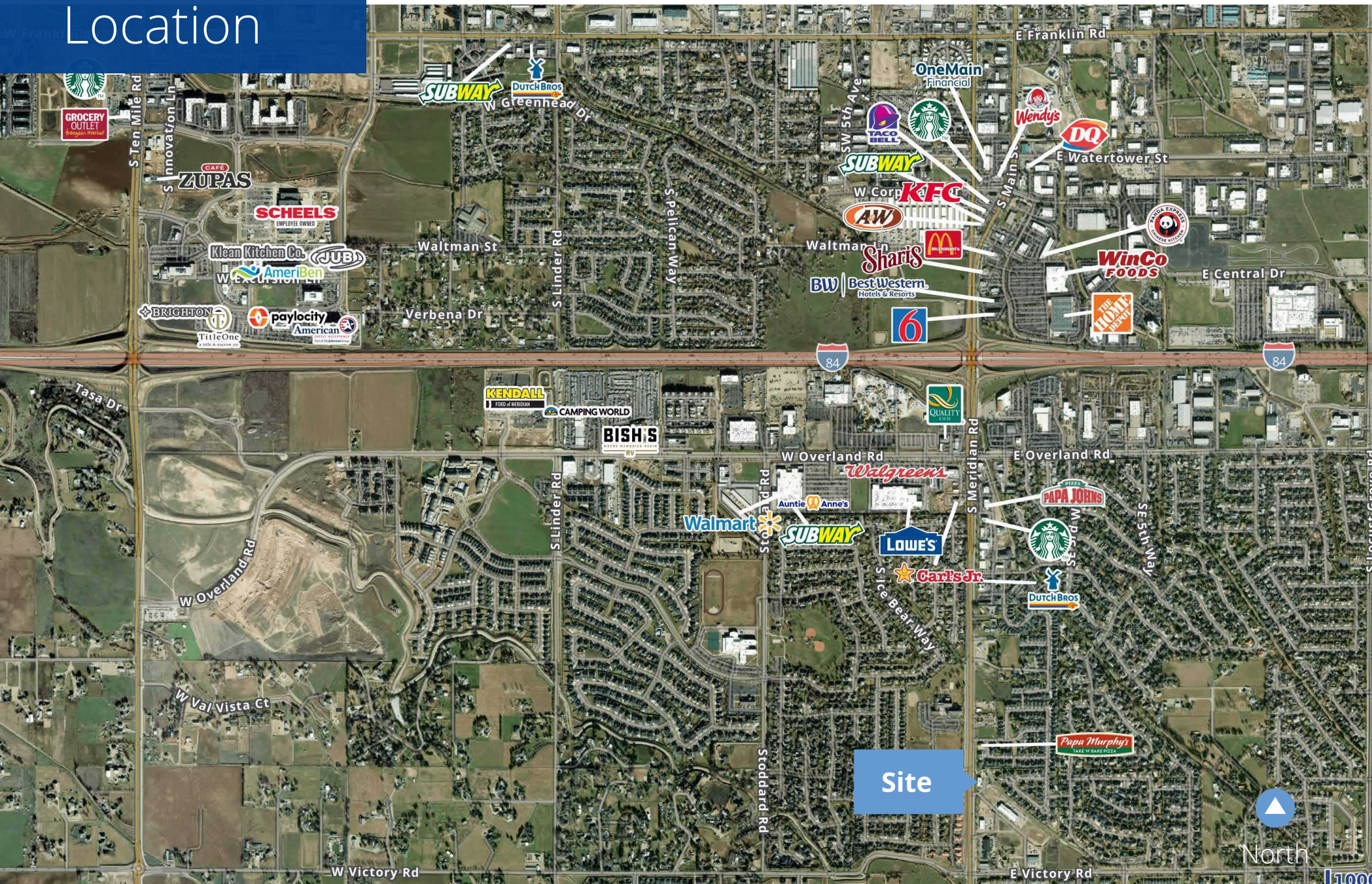
Location



Google Map



Street View



Site



North

Local Overview | Meridian, ID

Ranked #1 in “Best Suburbs to Live In” by Niche in 2020, Meridian is Idaho’s fastest growing city and its residents enjoy an undeniable quality of life, affordability and a family oriented lifestyle.

From young professionals to retirees, people of all ages call this flourishing community home – and for good reason. It is among the safest places to live, is affordable, offers four distinct seasons, and it’s just a fun place to settle down.

Residents can sip coffee and shop at their favorite stores downtown, grab a bite at any of the area’s popular restaurants, like Lucky Fins Seafood Grill, hike local trails, kayak along the Payette River – the options are nearly endless (*livability.com*).

Resources:

meridiacity.org

choosemeridian.us/



2024
population

139,019



Unemployment
Rate

1.4%



2024 Average Household
Income

\$131,722



Average
Commute Time

22.2

#1

Median Household
Income Growth -
Idaho

2024 **FORBES** BUSINESS REVIEW

Colliers

“Built for Business -
Designed for Living”
- City of Meridian Slogan

Major Employers

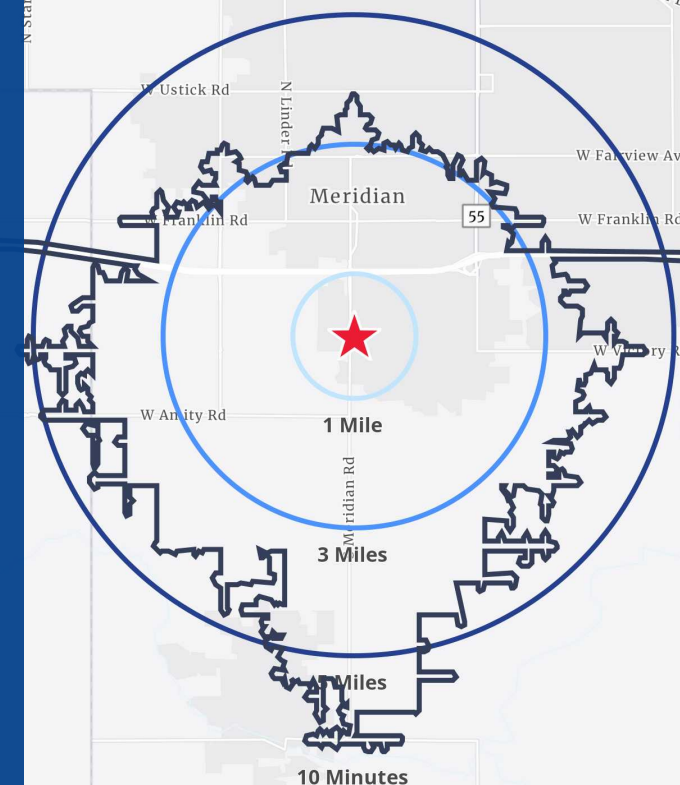


Academic Institutions Near Meridian



Demographics

	1 Mile	3 Miles	5 Miles	10 Min Drive
Population				
2024 Estimated Population	10,969	61,300	180,084	117,111
2029 Projected Population	12,130	70,383	199,495	133,659
2010 Census Population	6,176	32,538	116,914	72,663
Projected Change '24-'29	10.6%	14.8%	10.8%	14.1%
Household				
2024 Estimated Households	3,890	22,627	64,430	41,902
2029 Projected Households	4,352	26,456	72,241	48,386
2010 Census Households	2,088	11,638	40,117	25,025
Historical Change '00-'24	213.2%	208.9%	172.8%	169.8%
Income				
2024 Est. Average HH Income	\$146,283	\$133,726	\$124,280	\$125,106
2024 Est. Median HH Income	\$113,188	\$99,494	\$95,990	\$93,834
Misc.				
2024 Median Home Value	\$655,665	\$596,283	\$545,282	\$551,590
2022 Median Gross Rent	\$1,604	\$1,452	\$1,545	\$1,504
2024 Est. Labor Population Age 16+	6,069	33,168	94,419	62,951
2024 Est. Total Housing Expenditures	\$157,433,876	\$856,947,063	\$2,257,498,642	\$1,482,252,446



Colliers

755 West Front Street, Suite 300
Boise, Idaho 83702
208 345 9000
colliers.com/idaho

Investment Opportunity | Offering Memorandum

Saltzer Medical Building

2840 S. Meridian Road | Meridian, ID



This document has been prepared by Colliers for advertising and general information only. Colliers makes no guarantees, representations or warranties of any kind, expressed or implied, regarding the information including, but not limited to, warranties of content, accuracy and reliability. Any interested party should undertake their own inquiries as to the accuracy of the information. Colliers excludes unequivocally all inferred or implied terms, conditions and warranties arising out of this document and excludes all liability for loss and damages arising there from. This publication is the copyrighted property of Colliers and/or its licensor(s). © 2025. All rights reserved. This communication is not intended to cause or induce breach of an existing listing agreement. Colliers Paragon, LLC.