

SARATOGA

commercial real estate

FOR SALE OR RENT

VERSATILE DOWNTOWN BELLINGHAM COMMERCIAL CONDOS

1015 RAILROAD AVE, SUITE 101 & 102, BELLINGHAM, WA



VERSATILE DOWNTOWN BELLINGHAM COMMERCIAL CONDOS

1015 RAILROAD AVE, SUITE 101 & 102, BELLINGHAM, WA

UNIT 101:

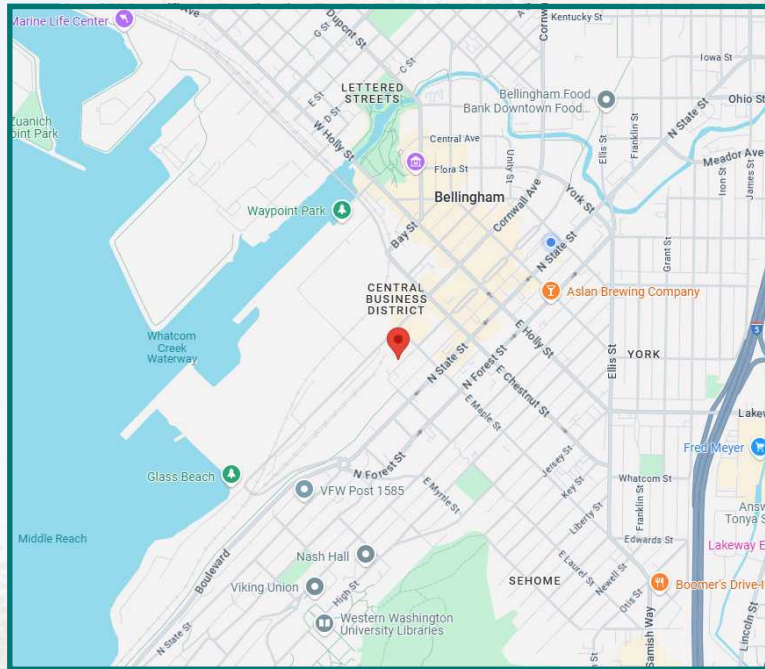
FOR SALE: **\$480,000**

989 SQUARE FEET

UNIT 102:

FOR SALE: **\$282,500**

612 SQUARE FEET



Elliott Kophs

elliott@saratogaRE.com

360.610.4980

Hannah Cano

hannah@saratogaRE.com

360.610.4335

saratogaRE.com

228 E CHAMPION, STE 102, BELLINGHAM, WA 98225

INFORMATION CONTAINED HEREIN HAS BEEN OBTAINED FROM SOURCES DEEMED RELIABLE, BUT NOT GUARANTEED. BUYER TO VERIFY.

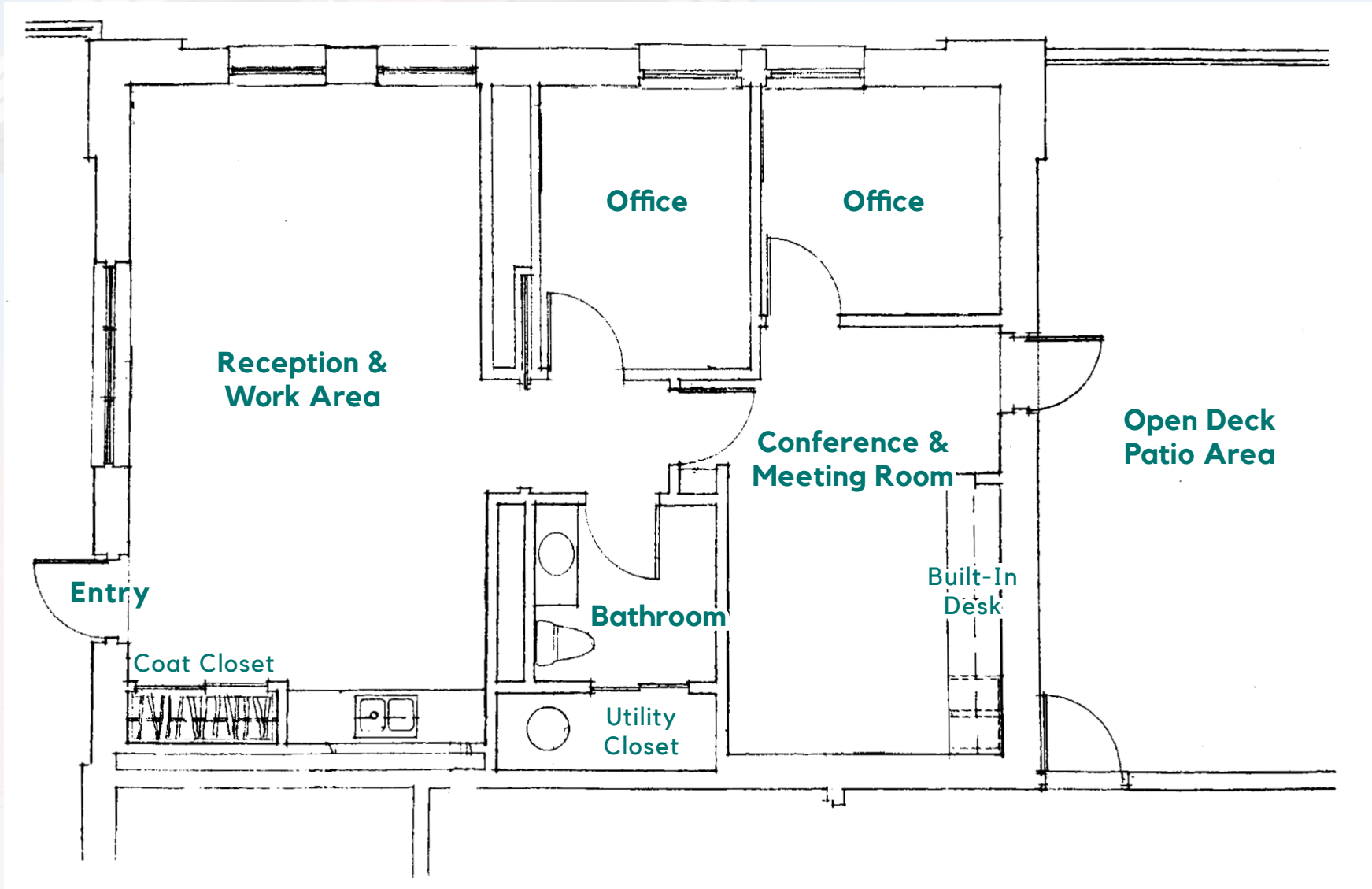
VERSATILE DOWNTOWN BELLINGHAM COMMERCIAL CONDOS

1015 RAILROAD AVE, SUITE 101 & 102, BELLINGHAM, WA

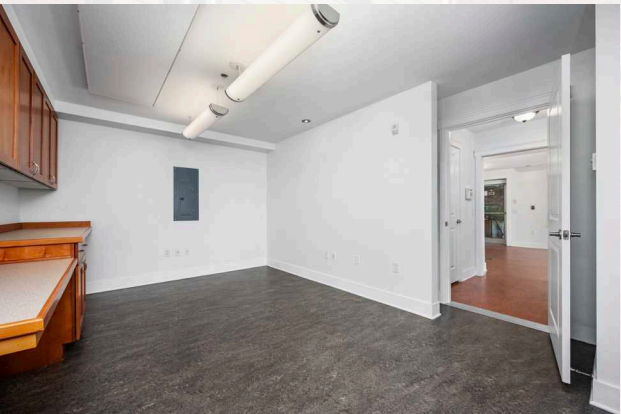
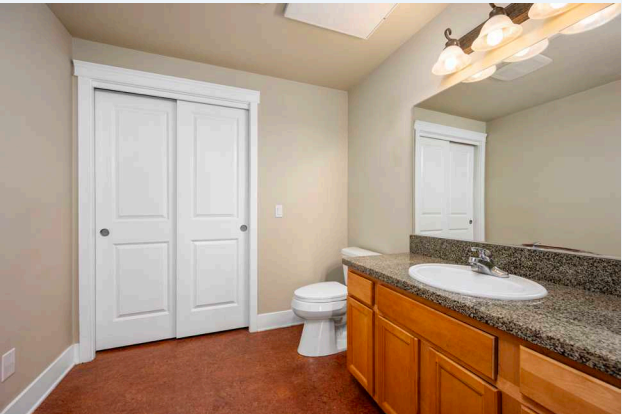
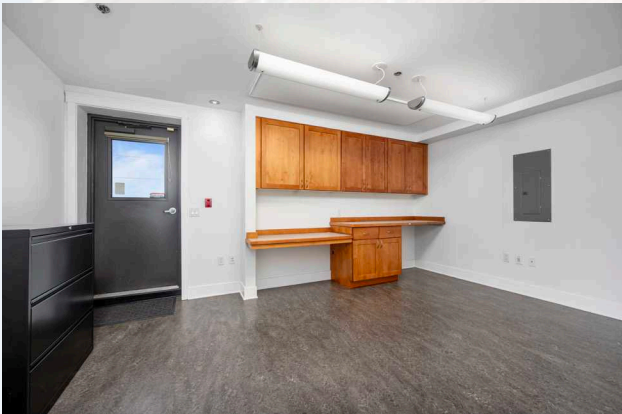
- Units are adjacent to bustling high foot traffic areas such as the farmers market, local restaurants, breweries, and the south bay trail.
- Unit 102 includes a full bath and kitchenette, making it perfect for a lifestyle office or meeting room. Both units together provide a versatile area for a growing business.
- Well-suited for retail, professional services, or entrepreneurial ventures.

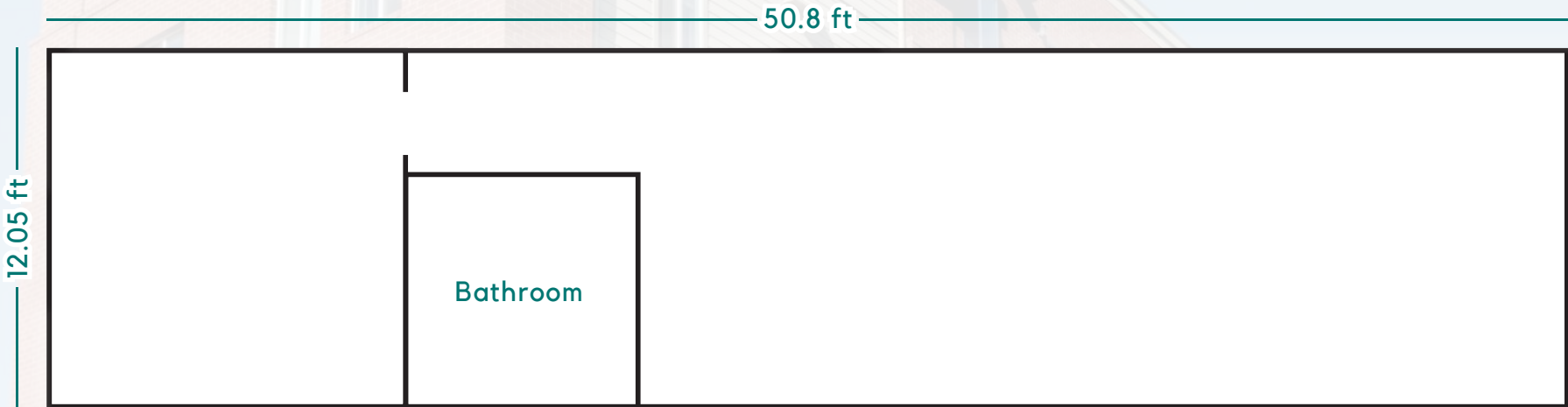


- Flexible configurations to suit business and personal needs.
- Owners are willing to carry financing with a substantial down payment, offering added flexibility for qualified buyers.



989 Square Feet





612 Square Feet

