

FOR SALE | \$850,000
OWNER USER OPPORTUNITY

HOLGATE SQUARE

920 S HOLGATE ST, SEATTLE, WA | SUITE 108



NEWMARK

MORGAN RICHEY, SIOR
Managing Director
425.362.1409
morgan.richey@nrmk.com

EVAN LUGAR
Senior Managing Director
425.362.1403
evan.lugar@nrmk.com

FOR SALE | \$850,000
OWNER USER OPPORTUNITY

HOLGATE SQUARE

920 S HOLGATE ST, SEATTLE, WA | SUITE 108

PROPERTY FACTS, FEATURES / HIGHLIGHTS

- Property Type: Flex, light manufacturing
- Year Built: 2010
- Power: 110-volt convenience power throughout both units and numerous 250-volt power outlets
- Flexible layout and design
- 1,747 SF /Unit including 795 SF mezzanine/Unit
- Industrial layout with high ceilings & roll up doors
- One (1) reserved parking stall
- One (1) 10" x 9' roll up grade door



NEWMARK

MORGAN RICHEY, SIOR
Managing Director
425.362.1409
morgan.richey@nmrk.com

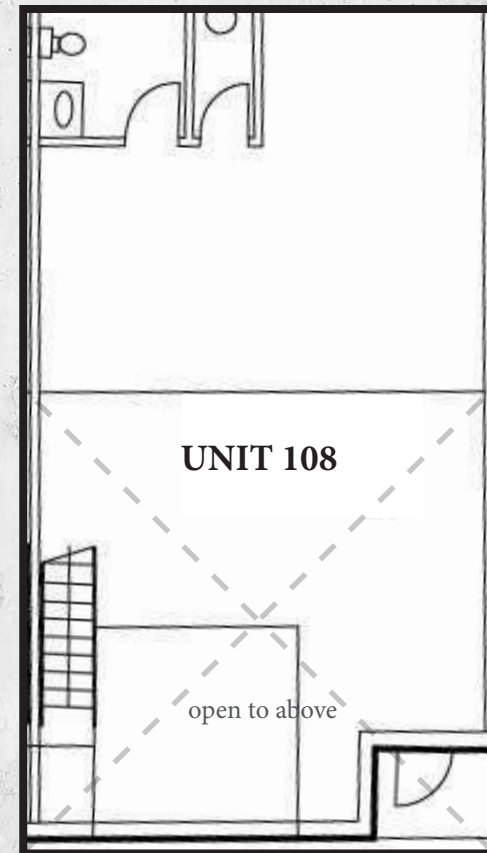
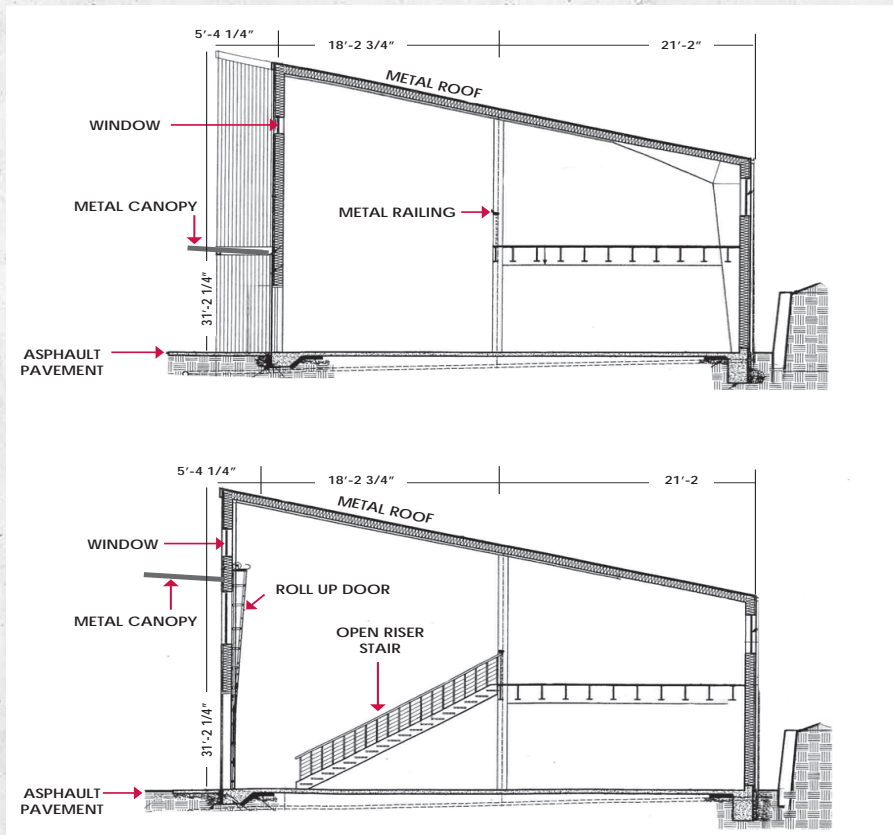
EVAN LUGAR
Senior Managing Director
425.362.1403
evan.lugar@nmrk.com

FOR SALE | \$850,000
OWNER USER OPPORTUNITY

HOLGATE SQUARE

920 S HOLGATE ST, SEATTLE, WA | SUITE 108

PLANS



NEWMARK

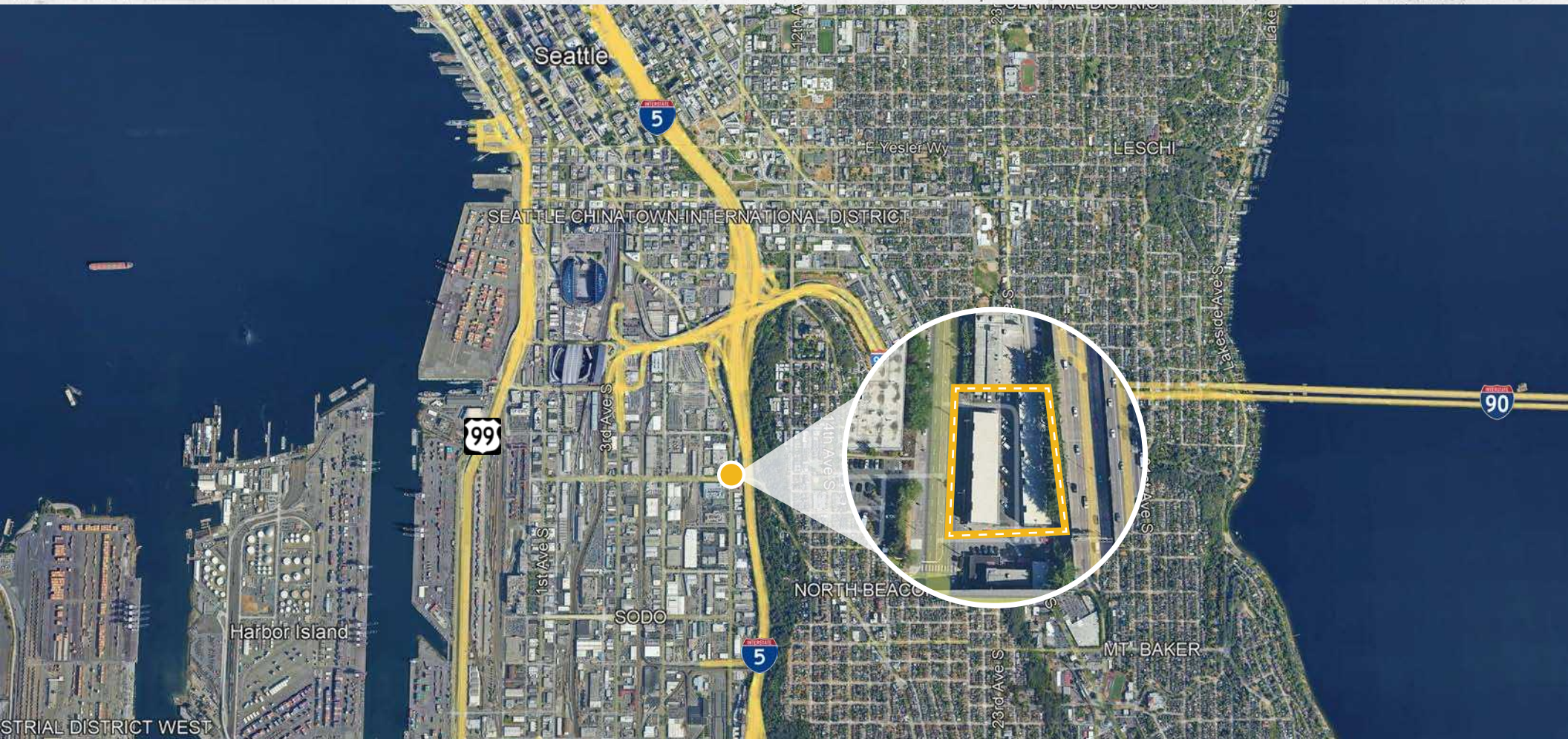
MORGAN RICHEY, SIOR
Managing Director
425.362.1409
morgan.richey@nmrk.com

EVAN LUGAR
Senior Managing Director
425.362.1403
evan.lugar@nmrk.com

FOR SALE | \$850,000
OWNER USER OPPORTUNITY

HOLGATE SQUARE

920 S HOLGATE ST, SEATTLE, WA | SUITE 108



NEWMARK

MORGAN RICHEY, SIOR
Managing Director
425.362.1409
morgan.richey@nrmk.com

EVAN LUGAR
Senior Managing Director
425.362.1403
evan.lugar@nrmk.com

HOLGATE SQUARE

920 S HOLGATE ST, SEATTLE, WA | SUITE 108

MORGAN RICHEY, SIOR

Managing Director
425.362.1409
morgan.richey@nmrk.com

EVAN LUGAR

Senior Managing Director
425.362.1403
evan.lugar@nmrk.com

NEWMARK